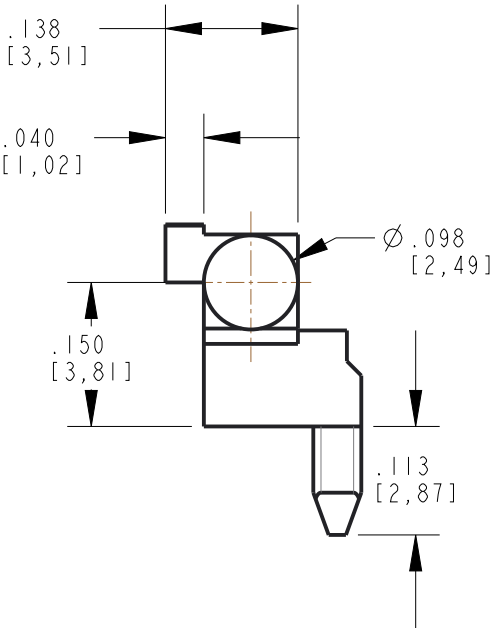
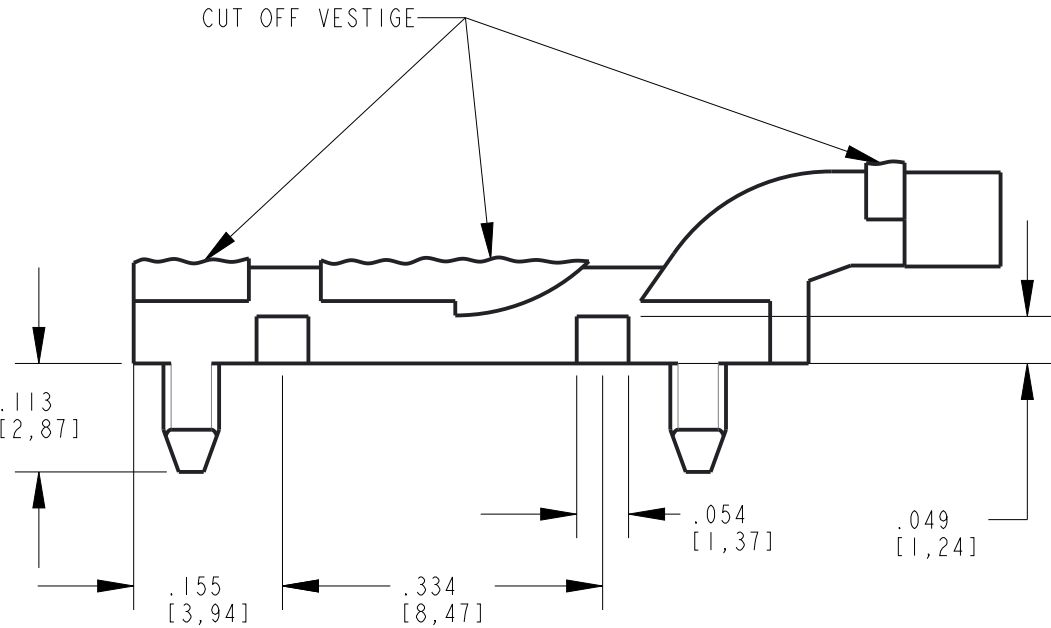


NOTES:

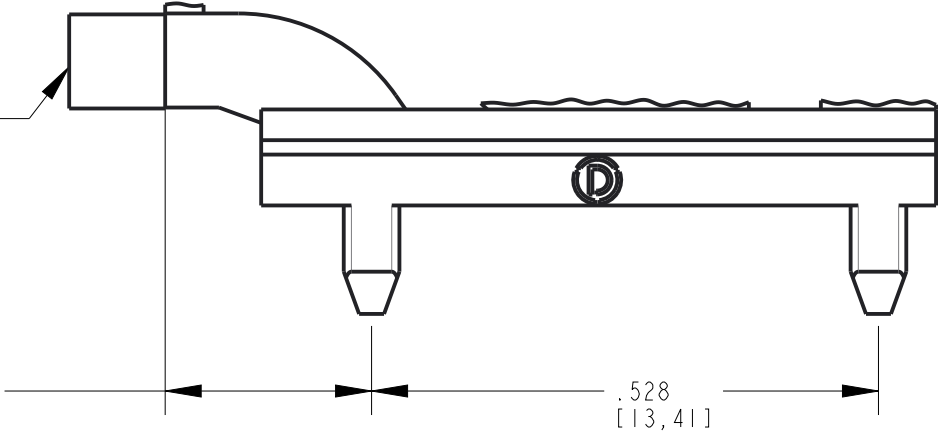
- 1. LIGHT PIPE TO BE MOLDED IN A CLEAR TRANSMISSIVE POLYCARBONATE (UL 94V-0 FLAMMABILITY CLASS).
- 2. COMPONENTS DESIGNED TO BE PRESSED INTO P.C. BOARD.
- 3. RECOMMENDED LIGHT SOURCES: SINGLE OR BI-COLOR SMT LEDS (DIALIGHT P/N'S: 597-7XXX-507F OR 597-3XXX-507F).
- 4. DIALIGHT PART NUMBER: 515-1064-810F.

REV	ECN NO	REVISIONS	DRN	CKD	APP	DATE
A	—	NEW RELEASE	VP	JTD	NO	11-16-15
B	—	UPDATED TOLERANCE ON PIN DIM. .070, ADDED PIN DIM.'S .050 AND .058	BP	SY	NO	1-25-17
C	—	UPDATED THE MODEL (RIB WAS ON THE WRONG SIDE), ADDED .138 AND .040 DIMENSIONS	BP	SY	NO	2-27-17
D	—	UPDATED THE MODEL (RIB WAS ON THE WRONG SIDE), ADDED .138 AND .040 DIMENSIONS	BP		NO	2-23-17
E	—	REMOVED "LIGHT SHIELD TO BE MOLDED IN A BLACK PBT" FROM NOTE 1 (NOT APPLICABLE)	BP		NO	2-24-17
F	128723	REMOVED "WITH SHIELD" IN TITLE BOX, ADDED BOTTOM VIEW	LD		CS	3-18-25

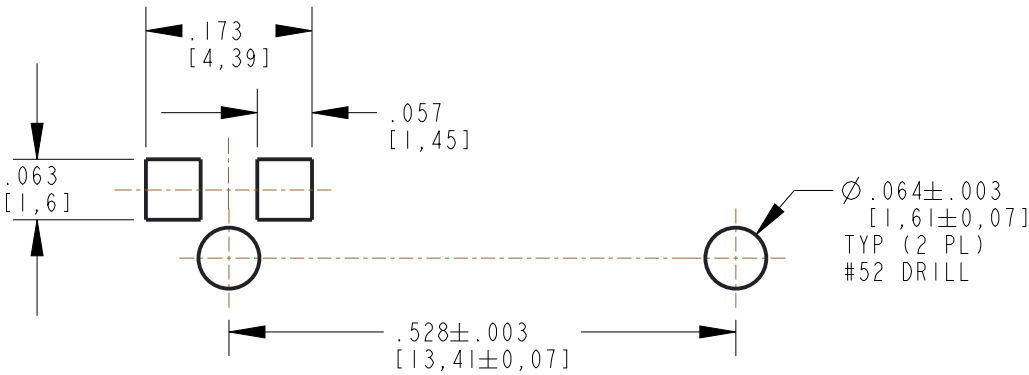


CHARMILLE #24 FINISH
OR EQUIVALENT ON
FRONT SURFACES ONLY

$.215^{+.000}_{-.010}$
[5,46^{+0,00}_{-0,25}]

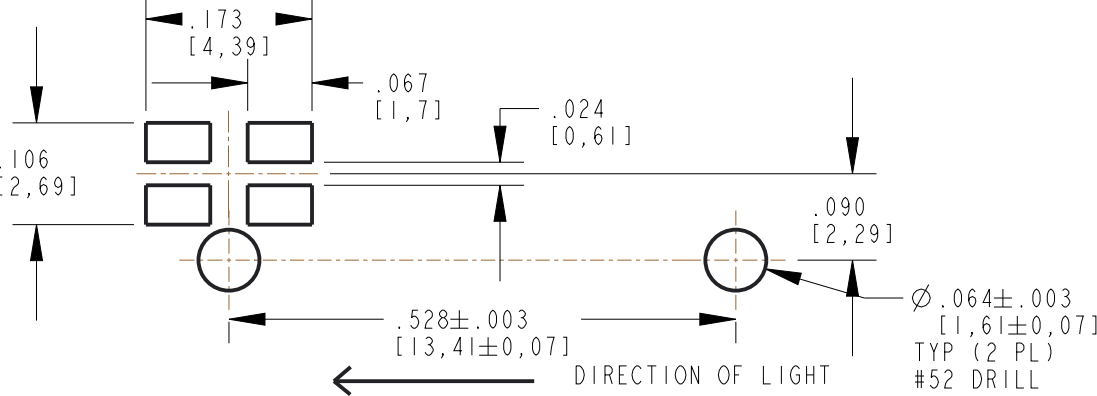


REFERENCE SOLDERPAD/HOLE LAYOUT FOR SINGLE-COLOR LEDS

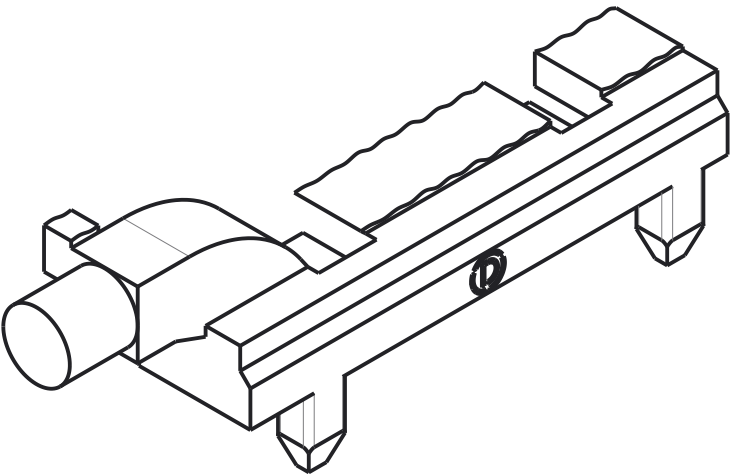
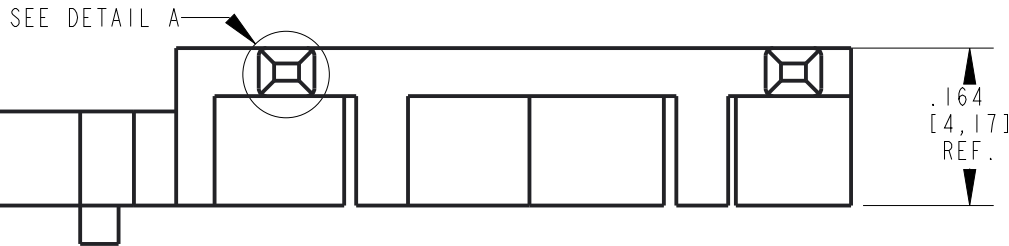
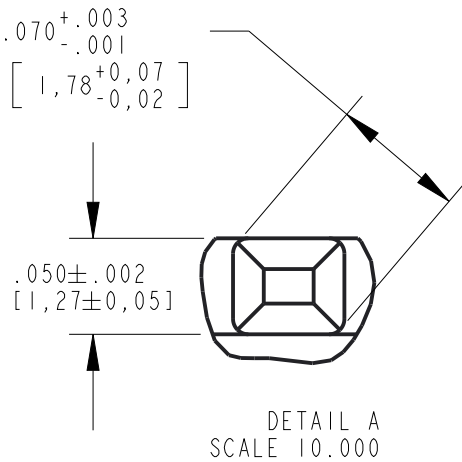



DIRECTION OF LIGHT

REFERENCE SOLDERPAD/HOLE LAYOUT FOR BI-COLOR LEDS



DIRECTION OF LIGHT



THIS DRAWING AND THE CONTENTS HEREIN ARE CONFIDENTIAL AND THE SOLE PROPERTY OF DIALIGHT CORP. REPRODUCTION OF THIS DRAWING OR CONSTRUCTION OF ANY PARTS WITHIN THIS DRAWING ARE FORBIDDEN WITHOUT THE WRITTEN CONSENT OF DIALIGHT CORP.			
DIALIGHT CORP. INTERNAL REFERENCE ONLY = 3D MODEL : 5151064810F-A.4			
SCALE: 5.000	DRAWING NUMBER		REV
ALL DIM'S: INCH (mm)	C-18214		F
TOLERANCES: UNLESS OTHERWISE SPECIFIED	TITLE		
FRACTIONS: $\pm 1/64$	SINGLE LEVEL LIGHT PIPE		
DECIMALS (.XX): $\pm .01$	MATERIAL		
DECIMALS (.XXX): $\pm .005$	 1501 ROUTE 34 SOUTH FARMINGDALE, NJ 07727 (732) 919-3119 www.dialight.com		
DECIMALS (.XXXX): $\pm .0005$			
ANGLES: $\pm 1^\circ$	FINISH		
FSCM 83330	SHEET 1 OF 1		FAMILY TABLE: