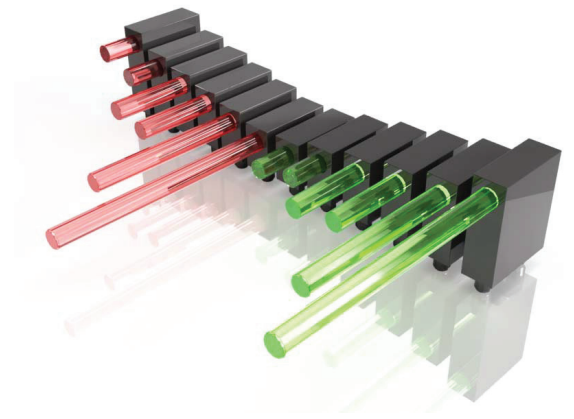




# Product Introductions



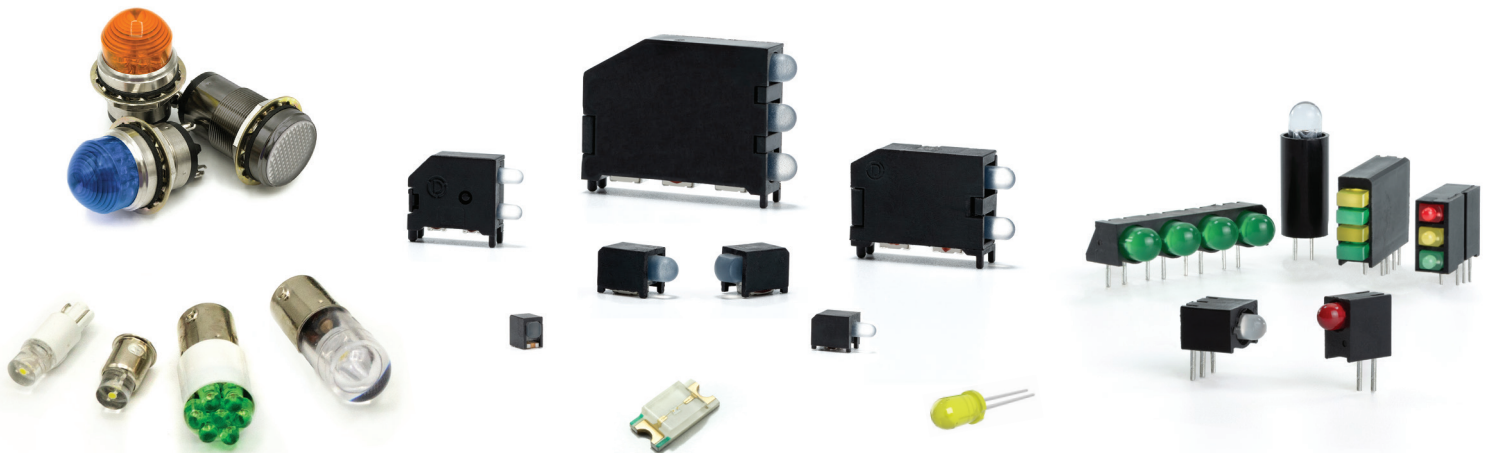


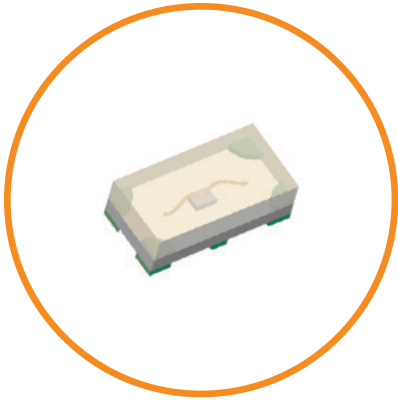
## Lighting The Way

Founded in 1938, Dialight is a leading supplier of Optoelectronic components, and an innovator in LED board-level through-hole and surface mount indication, including PRISM® SMDs and OPTOPIPE® Light Pipes.

Combined with our LED panel mount line and based LED bulbs, we offer the widest range of reliable indicator products.

It is our commitment to our customers to continue to provide the most reliable, high-quality LED products, with best-in-class service and support.





**598 8A SERIES**

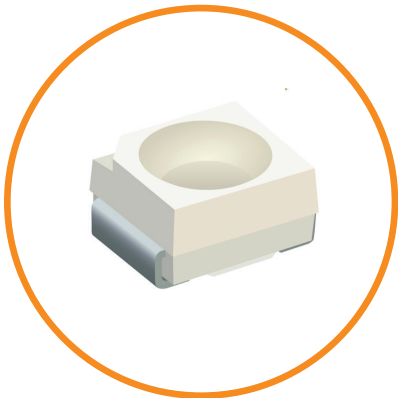
**0402 Low Current**

FEATURES & BENEFITS

- Ultra-miniature package
- Ideal for size constraint applications
- Low-current type is perfect for battery-powered equipment
- Ideal for handheld and battery applications
- Viewing angle 140 degrees
- 5 mA
- 4000 pc/reel
- 1.0 x 0.5 x 0.4mm

COLOR OPTIONS

AllInGAP: ● 635 Red ● 625 Red ● 605 Orange ● 590 Yellow ● 570 Yellow-Green  
InGaN: ● 525 Green ● 470 Blue



**598 8B SERIES**

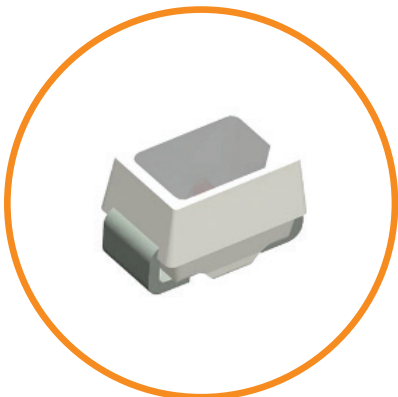
**3528 PLCC-2**

FEATURES & BENEFITS

- Industry standard PLCC-2 footprint
- Variety of colors with high luminous intensity
- Viewing angle 120 degrees
- -40 to +85C operating temperature
- 20 mA
- 2000 pc/reel
- 3.5 x 2.8 x 1.9mm

COLOR OPTIONS

AllInGAP: ● 635 Red ● 625 Red ● 605 Orange ● 590 Yellow ● 570 Yellow-Green  
InGaN: ● 525 Green ● 470 Blue



**598 8C SERIES**

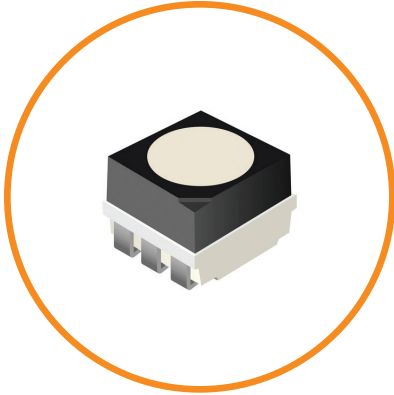
**Mini PLCC-2**

FEATURES & BENEFITS

- Smallest PLCC package available
- Variety of colors with high luminous intensity
- Viewing angle 120 degrees
- 5 mA & 20mA
- 3000 pc/reel
- 2.2 x 1.4 x 1.3mm

COLOR OPTIONS

AllInGAP: ● 635 Red ● 625 Red ● 605 Orange ● 590 Yellow ● 570 Yellow-Green  
InGaN: ● 525 Green ● 470 Blue



**598 8F SERIES**

**598-8F10-313F**

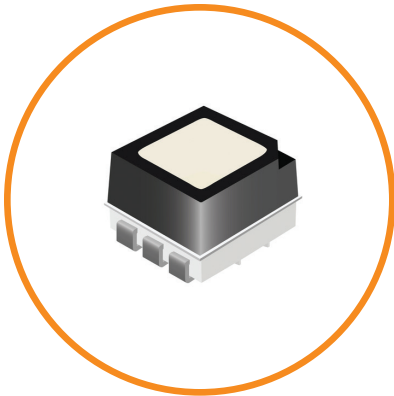
3735 PLCC-6

FEATURES & BENEFITS

- Surface non-reflective black appearance
- Compatible with Pb-free reflow soldering process
- High luminous intensity
- Low power consumption
- Good reliability and long life
- RoHS compliant
- -30°C to 85°C operating temperature range
- 20 mA
- 5a moisture sensitivity level
- Viewing angle 120 degrees
- 1000V ESD
- 3.7 × 3.5 × 2.8 mm

COLOR OPTIONS

- Red
- Green
- Blue



**598 8G SERIES**

**598-8G10-313F**

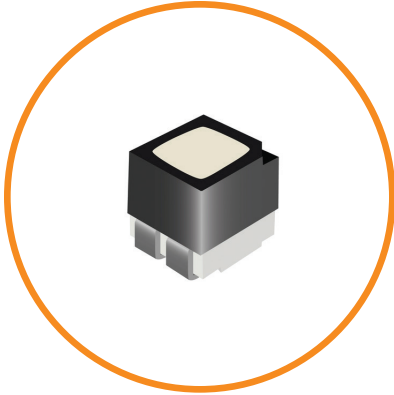
2827 PLCC-6

FEATURES & BENEFITS

- Surface non-reflective black appearance
- Compatible with Pb-free reflow soldering process
- High luminous intensity
- Low power consumption
- Good reliability and long life
- RoHS compliant
- -30°C to 85°C operating temperature range
- 20 mA
- 5a moisture sensitivity level
- Viewing angle 110 degrees
- 1000V ESD
- 2.8 × 2.7 × 2.45mm

COLOR OPTIONS

- Red
- Green
- Blue



**598 8H SERIES**

**598-8H10-313F**  
1515 PLCC-4

FEATURES & BENEFITS

- Surface non-reflective black appearance
- Compatible with Pb-free reflow soldering process
- High luminous intensity
- Low power consumption
- Good reliability and long life
- RoHS compliant
- -30°C to 85°C operating temperature range
- 20 mA
- 5a moisture sensitivity level
- Viewing angle 110 degrees
- 1000V ESD
- 1.5 × 1.5 × 1.6 mm

COLOR OPTIONS

- Red • Green • Blue



**598 8J SERIES**

**598-8JX0-103F**  
PLCC-4

FEATURES & BENEFITS

- Top view SMT LED with domed lens
- Ultra-high intensity and 50mA power
- Narrow viewing angle at 30 degrees features focused radiation in a compact high-reliability LED package
- Compatible with IR soldering process
- Compliant with AEC-Q102 standard for automotive applications
- RoHS compliant
- -40°C to +100°C operating temperature range
- 2 moisture sensitivity level
- 3.2 × 2.8 × 3.5 mm

COLOR OPTIONS

- Red • Yellow • Red-Orange • Blue • Green



**597 SERIES**

**597-6XX2-107F**  
1206 PKG

FEATURES & BENEFITS

- Reverse mount SMD LED with domed lens
- High intensity and narrow viewing angle at 30 degrees features focused radiation
- Designed to emit light through a small cut-out hole in the PCB
- Ideal for narrow space and height constraint applications
- Ideal for applications where light bleeding is a problem
- Compatible with automatic placement machine
- RoHS compliant
- -40°C to +85°C operating temperature range
- 20 mA
- 3 moisture sensitivity level
- 3.2 × 1.6 × 1.6 mm

COLOR OPTIONS

- Red • Orange • Yellow • Yellow-Green • Green • Blue



599 SERIES

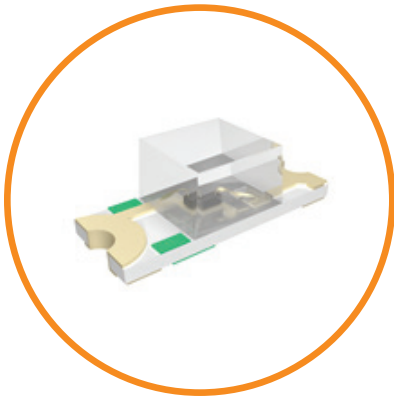
**599-2310-42XF**  
3030 PKG

FEATURES & BENEFITS

- For dynamic color control plus pure white light from a single surface mount package
- 3 × 3 × 0.65 mm
- Wide 120 degree viewing angle
- Compatible with automatic placement machine
- RoHS compliant
- -40°C to +105°C operating temperature range
- 20 mA
- 3 moisture sensitivity level

COLOR OPTIONS

- Red ● Green ● Blue ○ White



599 SERIES

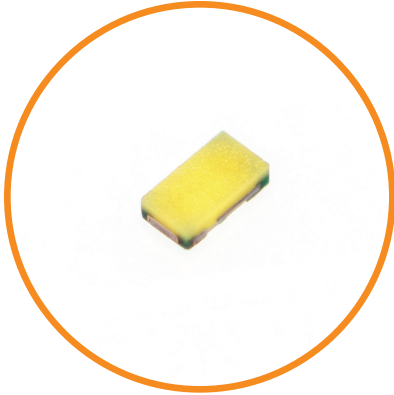
**Reverse Mount SMD Chip LED**  
1205 PKG

FEATURES & BENEFITS

- Package Size: 3.2 x 1.25 x 1.1mm
- Lens Type: Water Clear
- Wide Viewing Angle: 140 degrees
- Reverse Mount SMD LEDs are for lighting the non-component side of a PCB, where the LED emits light through a small cut-out hole on the board.
- Small package with thin profile for space saving
- Ideal for narrow space applications
- Industry standard footprint
- Compatible with automatic placement machine

HIGH BRIGHTNESS COLOR OPTIONS:

- Red ● Red-Orange ● Yellow ● Yellow-Green ● True Green ● Blue



598 SERIES

**598-2A00-10XF**

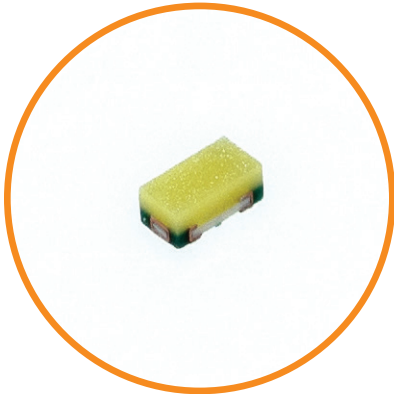
0402 PKG Top View

FEATURES & BENEFITS

- Neutral White 350-530mcd
- For low power and battery-operated applications.
- 1 × 0.5 × 0.25 mm
- Wide 140 degree viewing angle
- Compatible with automatic placement machine
- RoHS compliant
- -40°C to +85°C operating temperature range
- Low current 5 mA
- 3 moisture sensitivity level

COLOR OPTIONS

- White



598 SERIES

**598-2A01-10XF**

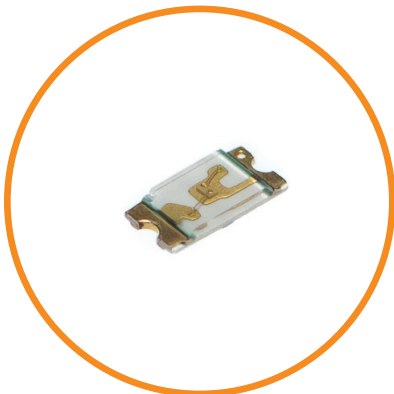
0402 PKG Top View

FEATURES & BENEFITS

- Neutral White 600-1400mcd
- 1.0 x 0.5 x 0.4mm
- Wide 140 degree viewing angle
- Compatible with automatic placement machine
- RoHS compliant
- -40°C to +85°C operating temperature range
- 20 mA
- 3 moisture sensitivity level

COLOR OPTIONS

- White



598 SERIES

**598-2N00-10XF**

0603 PKG Top View

FEATURES & BENEFITS

- Cool White 430-1000mcd
- 1.6 x 0.8 x 0.25mm
- Wide 140 degree viewing angle
- Compatible with automatic placement machine
- RoHS compliant
- -40°C to +85°C operating temperature range
- 20 mA
- 3 moisture sensitivity level

COLOR OPTIONS

- White





**598 SERIES**

**598-2003-10XF**

**0603 PKG Top View**

FEATURES & BENEFITS

- Cool White 230-1200mcd
- 1.6 x 0.8 x 0.4mm
- Wide 140 degree viewing angle
- Compatible with automatic placement machine
- RoHS compliant
- -40°C to +85°C operating temperature range
- 20 mA
- 3 moisture sensitivity level

COLOR OPTIONS

- White



**598 SERIES**

**598-2L01-10XF / 598-2L00-10XF**

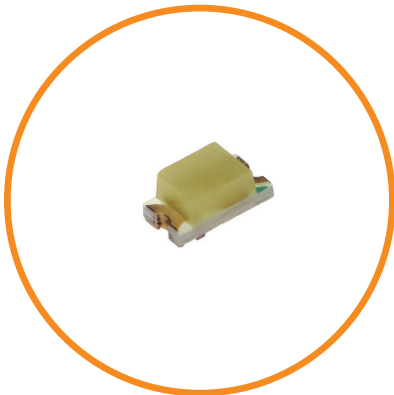
**0603 PKG Mini PLCC With Reflector Cup**

FEATURES & BENEFITS

- Cool White
  - 598-2L00-10XF: 150-800mcd
  - 598-2L01-10XF: 1200-2800mcd
- 1.6 x 0.8 x 0.55mm
- 598-2L00-10XF: 5 mA for low power and battery-operated applications
- 598-2L01-10XF: 20 mA
- Wide 140 degree viewing angle
- Compatible with automatic placement machine
- RoHS compliant
- -40°C to +85°C operating temperature range
- 3 moisture sensitivity level

COLOR OPTIONS

- White



**598 SERIES**

**598-2002-10XF**

**0603 PKG Top View**

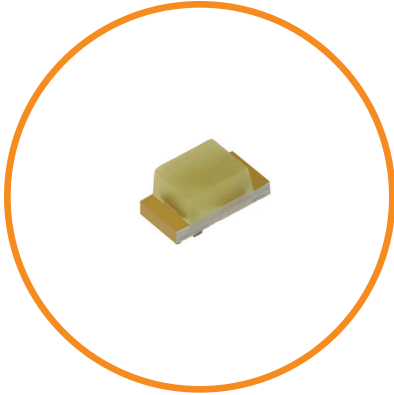
FEATURES & BENEFITS

- Cool White 280-800mcd
- 1.6 x 0.8 x 0.7mm
- 20 mA
- Wide 140 degree viewing angle
- Compatible with automatic placement machine
- RoHS compliant
- -40°C to +85°C operating temperature range
- 3 moisture sensitivity level

COLOR OPTIONS

- White





**598 SERIES**

**598-2000-10XF / 598-2005-10XF**

**0603 PKG Top View**

FEATURES & BENEFITS

- Neutral White
  - 598-2000-10XF: 65 -200mcd
  - 598-2005-10XF: 500-1000mcd
- 1.6 x 0.8 x 0.7mm
- 598-2000-10XF: 5 mA for low power and battery-operated applications.
- 598-2005-10XF: 20 mA
- Wide 140 degree viewing angle
- Compatible with automatic placement machine
- RoHS compliant
- -40°C to +85°C operating temperature range
- 3 moisture sensitivity level

COLOR OPTIONS

- White



**598 SERIES**

**598-2E00-10XF**

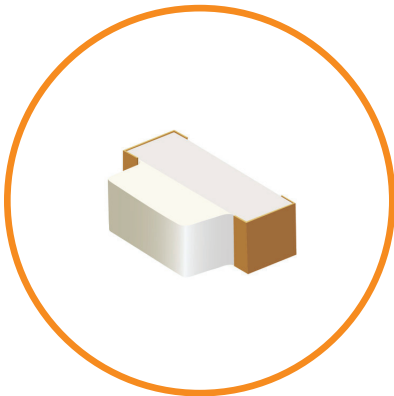
**0603 PKG With Dome Lens**

FEATURES & BENEFITS

- Cool White 350-800mcd
- 1.6 x 0.8 x 0.93mm
- 20 mA
- Domed lens for wide 160 degree viewing angle
- Compatible with automatic placement machine
- RoHS compliant
- -40°C to +85°C operating temperature range
- 3 moisture sensitivity level

COLOR OPTIONS

- White



**597 SERIES**

**597-2903-50XF**

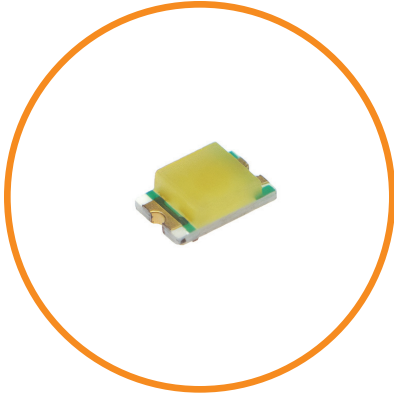
**0605 PKG Right Angle**

FEATURES & BENEFITS

- 1.6 x 1.15 x 0.55mm
- 20 mA
- RoHS compliant
- -40°C to +85°C operating temperature range

COLOR OPTIONS

- White



**598 SERIES**

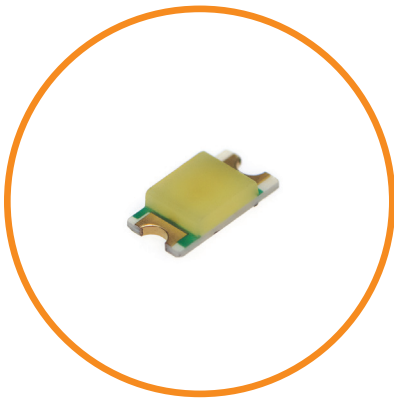
**598-2102-10XF / 598-2103-10XF /  
598-2105-10XF**

**0805 PKG Top View**

**FEATURES & BENEFITS**

- Cool White
  - 598-2102-10XF: 63-350mcd
  - 598-2103-10XF: 150-700mcd
  - 598-2105-10XF: 600 – 1000mcd
- 2.0 x 1.25 x 0.7mm
- 598-2102-10XF / 598-2103-10XF: 5 mA for low power and battery-operated applications
- 598-2105-10XF: 20 mA
- Wide 140 degree viewing angle
- Compatible with automatic placement machine
- RoHS compliant
- -40°C to +85°C operating temperature range
- 3 moisture sensitivity level

COLOR OPTIONS: ○ White



**598 SERIES**

**598-2200-10XF**

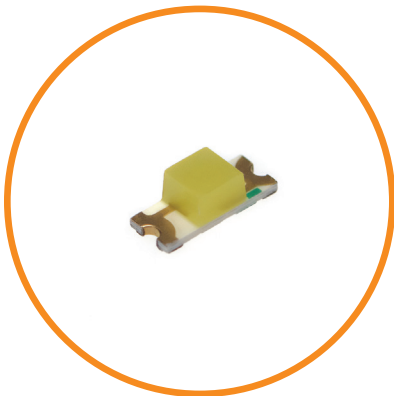
**1206 PKG Top View**

**FEATURES & BENEFITS**

- Cool White 500-1000mcd
- 3.2 x 1.6 x 0.7mm
- 20 mA
- Wide 140 degree viewing angle
- Compatible with automatic placement machine
- RoHS compliant
- -40°C to +85°C operating temperature range
- 3 moisture sensitivity level

**COLOR OPTIONS**

○ White



**598 SERIES**

**598-2K00-10XF**

**1206 PKG Reverse Mount**

**FEATURES & BENEFITS**

- Neutral White 100-350mcd
- 3.2 x 1.25 x 1.1mm
- 5 mA for low power and battery-operated applications
- Wide 140 degree viewing angle
- Compatible with automatic placement machine
- RoHS compliant
- -40°C to +85°C operating temperature range
- 3 moisture sensitivity level

**COLOR OPTIONS**

○ White



**598 SERIES**

**598-2M00-10XF**

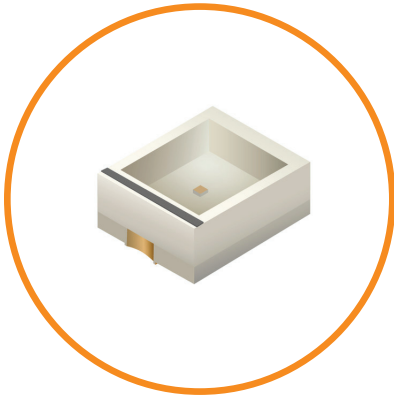
1206 PKG With Dome Lens

FEATURES & BENEFITS

- Cool White 280-650mcd
- 3.2 x 1.6 x 1.88mm
- 20 mA
- Wide 140 degree viewing angle
- Compatible with automatic placement machine
- RoHS compliant
- -40°C to +85°C operating temperature range
- 3 moisture sensitivity level

COLOR OPTIONS

- White



**597 SERIES**

**597-3902-50XF**

1208 PKG With Reflector Cup

FEATURES & BENEFITS

- 3.0 x 2.0 x 1.3mm
- 20 mA
- RoHS compliant
- -30°C to +85°C (-22°F to +185°F) operating temperature range

COLOR OPTIONS

- White



**599 SERIES**

**599-2500-12XF**

3216 PKG Top View

FEATURES & BENEFITS

- 3.2 x 1.6 x 1.1mm
- 20 mA
- Wide 140 degree viewing angle
- RoHS compliant
- -40°C to +85°C operating temperature range

COLOR OPTIONS

- White

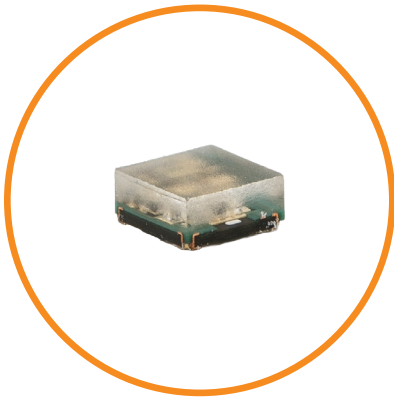


587 SERIES

**1616 Addressable RGB LED**  
SMD LED + IC

FEATURES & BENEFITS

- Support signal reshaping to pass control waveforms to next adjacent driver
- Cascading port transmission by a single data line
- Built-in current regulator, three-way drive
- Optional maximal drive current: 5mA
- 256-step gray-scale output to allow 16,777,216 color display
- 32-step dimming control
- Built-in oscillator 20MHz
- LED driver port maximum withstand Voltage 6.5V
- Built-in power-on-reset (2.6V) (@VDD=5V)
- Operating voltage 3.3~5.5V
- Support sleep and wake up mode for power-saving



587 SERIES

**2020 Addressable RGB LED**  
SMD LED + IC

FEATURES & BENEFITS

- Support signal reshaping to pass control waveforms to next adjacent driver
- Cascading port transmission by a single data line
- Built-in current regulator, three-way drive.
- Optional- Optional maximal drive current: 5mA
- 256-step gray-scale output to allow 16,777,216 color display
- Built-in oscillator 20MHz
- LED driver port maximum withstand Voltage 6.5V
- Built-in power-on-reset (2.6V) (@VDD=5V)
- Operating voltage 3.3~5.5V



587 SERIES

**5050 Addressable RGB LED**  
SMD LED + IC

FEATURES & BENEFITS

- 5050 package size, single wire, 24 bit data frame
- Support signal reshaping to pass control waveforms to next adjacent driver
- Cascading port transmission by a single data line
- Built in current regulator, three way drive
- Optional maximal drive current: 20mA
- 256 step gray scale output to allow 16,777,216 color display
- Built in oscillator 20MHz
- LED driver port maximum withstand Voltage 6.5V
- Built in power on reset (2.6V) (@VDD=5V)
- Operating Voltage Range: 3.3V ~ 5.5V



**587 SERIES**

**5050 Addressable RGB LED**  
SMD LED + IC

FEATURES & BENEFITS

- Support signal reshaping to pass control waveforms to next adjacent driver
- Cascading port transmission by dual-wire (clock and data) lines
- Built-in current regulator, three-way drive
- Optional maximal drive current: 20mA
- 256-step gray-scale output to allow 16,777,216 color display
- 32-step dimming control
- Built-in oscillator 20MHz
- Maximum serial input data/clock frequency 15MHz
- LED driver port maximum withstand Voltage 6.5V
- Built-in power-on-reset (2.6V) (@VDD=5V)
- Built-in brown-out reset
- Operating Voltage Range: 3.3~5.5V
- Support sleep and wake up mode for power-saving



**587 SERIES**

**Right Angle / Side View**  
**Addressable RGB LED**  
SMD LED + IC

FEATURES & BENEFITS

- Support signal reshaping to pass control waveforms to next adjacent driver
- Cascading port transmission by a single data line
- Built-in current regulator, three-way drive
- Optional maximal drive current: 5mA
- 256-step gray-scale output to allow 16,777,216 color display
- Built-in oscillator 20MHz
- LED driver port maximum withstand Voltage 6.5V
- Built-in power-on-reset (2.6V) (@VDD=5V)
- Operating voltage 4.5~5.5V



**620, 621, 622 & 623 SERIES**

## Heavy Duty Panel Mount Indicators

FEATURES & BENEFITS

- Modern, attractive design
- Metal LED indicator for rugged applications
- Wide range of voltages 3V, 6V, 12V, 24V
- Variety of colors and RGB illumination available
- Different terminal options for easy installation
- Durable stainless steel housing
- Designed for indoor / outdoor applications

CERTIFICATIONS & RATINGS

- RoHS compliant
- IP66 / IP67
- IK10
- NEMA 4X



**556 SERIES**

## Constant Intensity Panel Mount Indicators

FEATURES & BENEFITS

- Designed for rugged, outdoor applications in 1" mounting holes
- Combines InGaN and AlInGaP for maximum light output and reliable visibility
- Ensures continuous indication on battery-operated equipment that will not decline as voltage depletes, 18-48V DC operating voltage
- Designed for indoor / outdoor applications

CERTIFICATIONS & RATINGS

- IP66
- RoHS compliant w/ 6C exemption
- NEMA 4X
- IK07



**653, 654 & 655 SERIES**

## Snap-In Panel Mount Indicators

FEATURES & BENEFITS

- Low cost solution panel mount LED that allows for mounting to panels with 0.027" to 0.138" thicknesses
- Designed with flexible tabs and wire leads
- Mounting hole sizes: 0.50", 0.579", 0.657"
- Variety of colors and voltage options
- Press fit installation

CERTIFICATIONS & RATINGS

- RoHS compliant



**630 SERIES**

**30mm Panel Mount Indicators**

630-1X0X-304F (Flat lens) / 630-3X0X-304F (Domed lens)

FEATURES & BENEFITS

- Largest mounting hole size of 30mm (1.18") available with flat and domed lens
- Highly durable brass housing with white nickel plating designed for indoor / outdoor applications
- Variety of high light output colors including white
- Daylight viewable

CERTIFICATIONS & RATINGS

- UL 1598 (E156890)
- IP66
- NEMA 4X
- RoHS compliant w/ 6C exemption
- IK07



**677 SERIES**

**7mm High Intensity Panel Mount Indicators**

677-1X2X-3XXF in Black Nickel

FEATURES & BENEFITS

- Protruding LED Lens with 7.2mm panel mount hole size
- High brightness LEDs in a variety of colors
- Highly durable brass housing with black nickel plating to provide corrosion resistance
- Maintains excellent electrical conductivity and low reflectivity

CERTIFICATIONS & RATINGS

- RoHS compliant
- NEMA 4X (with gasket)
- IP66 (with gasket)IK07



**656 SERIES IN 48 VDC**

**High Intensity LED Panel Mount Indicators**

656-1XXA-X0XF

FEATURES & BENEFITS

- 12.7mm (0.50") LED panel mount available with voltage option 48V DC
- High luminous intensity LEDs in red, green, and yellow with domed lens and flat lens
- Available with wire leads and blade terminals
- Brass housing available with white nickel plating and black nickel plating
- Daylight viewable

CERTIFICATIONS & RATINGS

- NEMA 4X
- UL1598: wire leads — UL listed; terminals — UL recognized
- IP66 / 67
- RoHS compliant w/ 6C exemption





**559 RECTANGLE SERIES**

**Snap-In LED**

0.216 x 0.139" (5.49 x 3.53mm) Mounting Hole

FEATURES & BENEFITS

- The only rectangular panel mount indicator
- Simple, press fit installation
- 2mm x 4mm rectangular LED available in a variety of colors including bi-color
- Diffused lens with wide viewing angle
- UL94V-0 rated black housing

CERTIFICATIONS & RATINGS

- RoHS compliant



**657 BI- AND TRI-COLOR SERIES**

**Watertight Series  
Panel Mount Indicators**

FEATURES & BENEFITS

- Flat and domed lens options
- 5 bi-color options and 2 tri-color options available
- Highly durable, watertight polycarbonate housing
- Completely sealed and potted
- 11/16" (17.46mm) mounting hole size
- Voltage options from 10-30 VDC

CERTIFICATIONS & RATINGS

- RoHS compliant
- NEMA 4X
- IP67



**658 BI- AND TRI-COLOR SERIES**

**Watertight Series  
Panel Mount Indicators**

FEATURES & BENEFITS

- Largest multi-colored mounting size option with 1.00" (25.4mm) mounting hole
- Highly durable, watertight polycarbonate housing
- Completely sealed and potted
- 5 bi-color options and 2 tri-color options available
- Voltage options from 12-30 VDC
- Designed for indoor / outdoor applications
- Domed lens

CERTIFICATIONS & RATINGS

- RoHS compliant
- NEMA 4X
- IP67

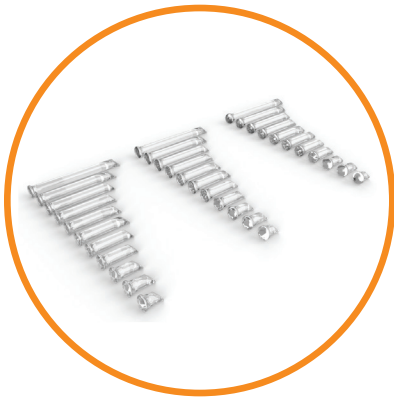


**515 SERIES**

## **3mm & 5mm Vertical Panel Mount**

FEATURES & BENEFITS

- Easy to install front panel mounting
- High efficiency
- Variable lengths
- 3 lens shapes
- Can be used with any top view LED

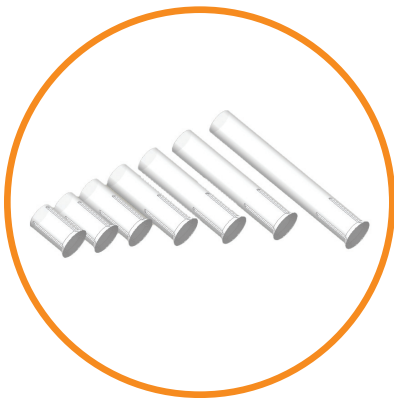


**515 SERIES**

## **5mm Panel Mount Right Angle**

FEATURES & BENEFITS

- The flexibility of Dialight Vertical Optopipes for use with top view LEDs
- Front panel mounting
- Variable lengths
- 3 lens shapes



**515 SERIES**

## **1mm, 2mm, 3mm Flush-Mount**

FEATURES & BENEFITS

- Our smallest vertical pipe 1mm diameter
- Easy to install
- Tapered output surface for flush recessed mount into a front panel – countersink
- Various lengths .125” to .500”
- Wide variety of mounting sizes



515 SERIES

## 3mm Reverse Mount

FEATURES & BENEFITS

- Available lengths from 0.100" (2.54mm) – 1.000" (25.4mm). (Customizable within the given length range)
- Flat and domed lenses for optimal viewing angle (with water clear or diffused lens finish)
- Press fit mount into 0.121" +0.003/-0.002 (3.07mm) panel mount hole
- Suggested drill size 3.1mm metric drill or #31 drill (0.120")
- Material: water-clear polycarbonate, ROHS compliant UL94-V0, UV stabilized, Halogen-free
- Designed for both single and multiple color surface mount LEDs
- Recommended PLCC-2 and PLCC-4, surface mount LEDs part number: 597-XXXX-207F as shown.



515 SERIES

## Vertical Board Mount 3mm Diameter Output

FEATURES & BENEFITS

- Lengths varying from .250" to 1.250"
- Three lens styles for optimal viewing angles; Flat, Convex, and Domed
- Designed for both single and multi-color LEDs
- Positive snap-in mounting to .063" ± .007" (1.6 ± 0.178 mm)
- PCB with opaque light barrier
- Low-voltage and minimal power consumption
- Light is produced through photonic emission, not as a by-product of a radiating heat source
- Molded from RoHS compliant UL94-V0 Water Clear Polycarbonate with an oxygen index of 35%
- Designed to be used with Dialight PLCC-2 and PLCC-4 surface mount LEDs 597-XXXX-207F (pad layout shown). See the Surface Mount Selector Guide for LED operating characteristics. Lower profile surface mount LEDs in 598 and 597 series can be used as well as reverse mount LEDs. Please consult factory for availability.



**515 SERIES**

**Tri-level with Shield**

FEATURES & BENEFITS

- Eliminates light bleed
- A fix if smaller chip LEDs are used
- Full enclosed barrier and partial side barrier options available



**515 SERIES**

**High Density Quad Level Assembly**

FEATURES & BENEFITS

- Smallest four high pipe on the market
- Available in multiple lens configurations
- Super compact
- 1,2 or 3 elements top to bottom, or bottom to top
- Integral shielding eliminating light bleed
- Also available with 1, 2 and 3 positions populated



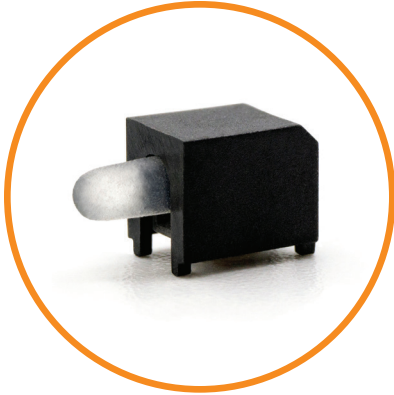
**515 SERIES**

**XY Variable Length/Height, Right Angle  
OPTOPIPE® Light Pipes**

**3mm Diameter Output**

FEATURES & BENEFITS

- Lengths varying from .319"–1.772"
- Heights varying from .200"–.500"
- Same board footprint across various heights and lengths
- Easy and secure installation via mounting pins on the housing
- Cost and time savings due to simplified board redesign
- No optical crosstalk, no light bleed
- Offers a high level of ESD protection
- Optical efficiency due to enclosed housing



**594 SERIES**

**PRISM® Surface Mount LED**

1.6mm Round Lens, 20 mA and 2 mA

FEATURES & BENEFITS

- Compatible with automatic placement equipment
- Packaged in 16mm tape, 7" reel (400 pcs/reel), 13" reel (1600 pcs/reel) and 20 piece strips
- Compatible with surface mount reflow soldering processes
- Housing material meets UL-94V-0 flammability ratings
- Design provides increased indication without increased space
- Packaged in moisture barrier bags for dry packaging per IPC/JEDEC J-STD-033
- Helps eliminate mixed technology PC board processing
- MSL2 for 2 mA, MSL3 for 20 mA



**596 SERIES**

**PRISM® Surface Mount LED**

1.6mm Round Lens, 20 mA and 2 mA

FEATURES & BENEFITS

- Compatible with automatic placement equipment
- Packaged in 16mm tape, 13" reel (500 pcs/reel) and 10 piece sample strips
- Compatible with surface mount reflow soldering processes
- Housing material meets UL-94V-0 flammability ratings
- Design provides increased indication without increased space
- Helps eliminate mixed technology PC board processing
- Packaged in moisture barrier bags for dry packaging per IPC/JEDEC J-STD-033, MSL2 for 2 mA, MSL3 for 20 mA

ALSO AVAILABLE



**591 SERIES**

**3mm PRISM®**

Square and round lens  
Single-, bi- and tri-colors



**592 SERIES**

**3mm PRISM®**

Bi-level  
Single-, bi- and tri-colors



**593 SERIES**

**3mm PRISM®**

Tri-level  
Single-, bi- and tri-colors



**595 SERIES**

**2mm PRISM®**

Single colors  
Back-lighting



**521 SERIES**  
**521-8559F**

FEATURES & BENEFITS

- Tri-color red / blue / pure green 5 mm LED
- Common anode and separate cathode leads for each color
- Diffused lens
- 5mm round full-color red/green/blue LED
- 4-leaded type, common anode and separate cathode leads for each color

CERTIFICATIONS & RATINGS

- RoHS compliant



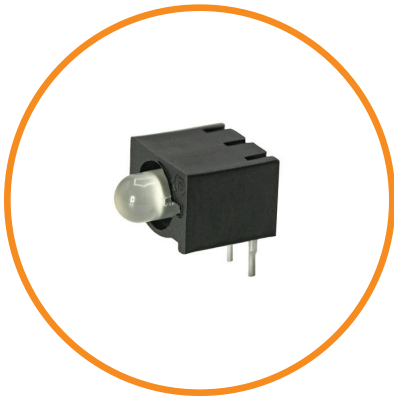
**550 SERIES**  
**550-4013F / 550-4014F**

FEATURES & BENEFITS

- Tri-color red / blue / green 4-leaded 5mm housed CBI
- Common anode and separate cathode leads for each color
- Diffused lens
- P/N 550-4013F: protruding lens
- P/N 550-4014F: recessed lens for backlight application

CERTIFICATIONS & RATINGS

- RoHS compliant



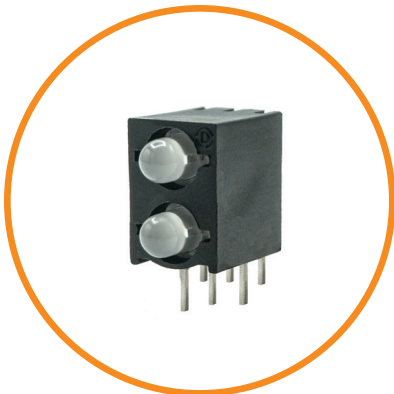
**551 SERIES**  
**3mm 3-Leaded Single CBI**

FEATURES & BENEFITS

- 551-3513F single CBI
- Bi-color red / green 3mm LED
- White diffused lens

CERTIFICATIONS & RATINGS

- RoHS compliant



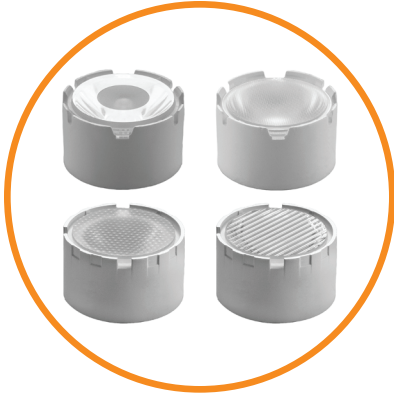
**553 SERIES**  
**3mm 3-Leaded Bi-Level CBI**

FEATURES & BENEFITS

- 553-3511-600F bi-level CBI
- Bi-color red / green 3 mm LED
- White diffused lens

CERTIFICATIONS & RATINGS

- RoHS compliant



OPT SERIES

**21.3mm TIR Optic**

10°, 25°, 40°, 60°, 80° and 10 x 45°

FEATURES & BENEFITS

- High transmissivity
- UL rated optic material
- Optic pre-installed in housing with tape for mounting



OPT SERIES

**35mm TIR Optic**

3°, 5°, 5 x 20°

FEATURES & BENEFITS

- High transmissivity
- UL rated optic material
- Optic only with tape or Optic pre-installed in housing with tape for mounting



OPT SERIES

**38.5mm TIR Optic With Holder And Tape**

3°, 5°, 5 x 20°

FEATURES & BENEFITS

- High transmissivity
- UL rated optic material
- Optic only with tape or Optic pre-installed in housing with tape for mounting



OPT SERIES

**Lens Optic**

10 x 90°, 25 x 90° and 35 x 85°

FEATURES & BENEFITS

- High transmissivity
- UL rated optic material
- Lens includes locating pins for consistent alignment





**OPT SERIES**

**10mm Reflector**

7° and 13°

FEATURES & BENEFITS

- Only 11.5mm (0.453”) maximum diameter
- Ideal for tightly spaced LED arrays
- Adhesive backing for easy installation. Adhesive rated from -40°C to +120°C (-40°F to +248°F)
- Automatic alignment feature
- Spot & wide versions available
- Universal version suites Cree XPC, XPE, XPG and standard Rebel LEDs



[www.dialightsignalsandcomponents.com](http://www.dialightsignalsandcomponents.com)