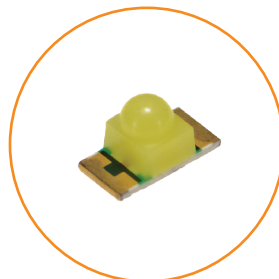
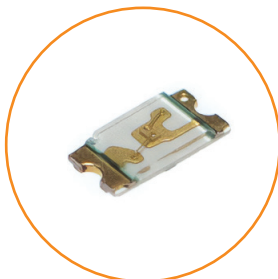
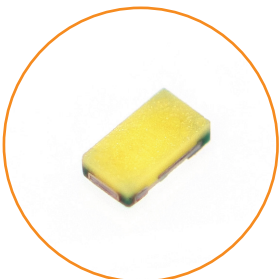
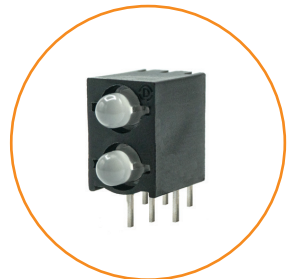
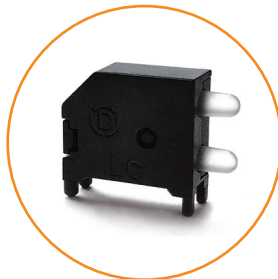
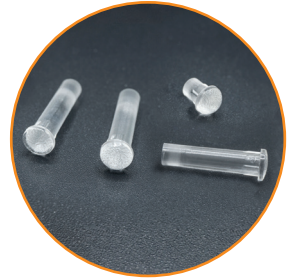
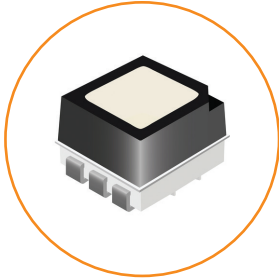
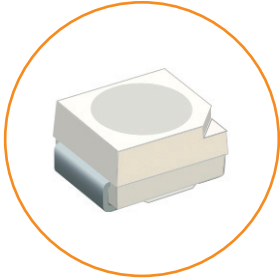




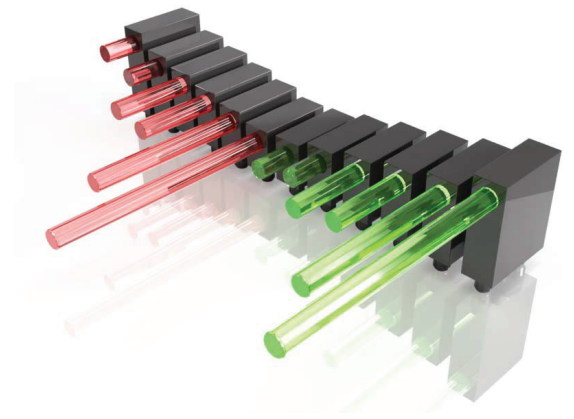
Product Introductions



Dialight

1501 Route 34 South
Farmingdale, NJ 07727
www.dialightsignalsandcomponents.com

OE is **Our** **Expertise.**

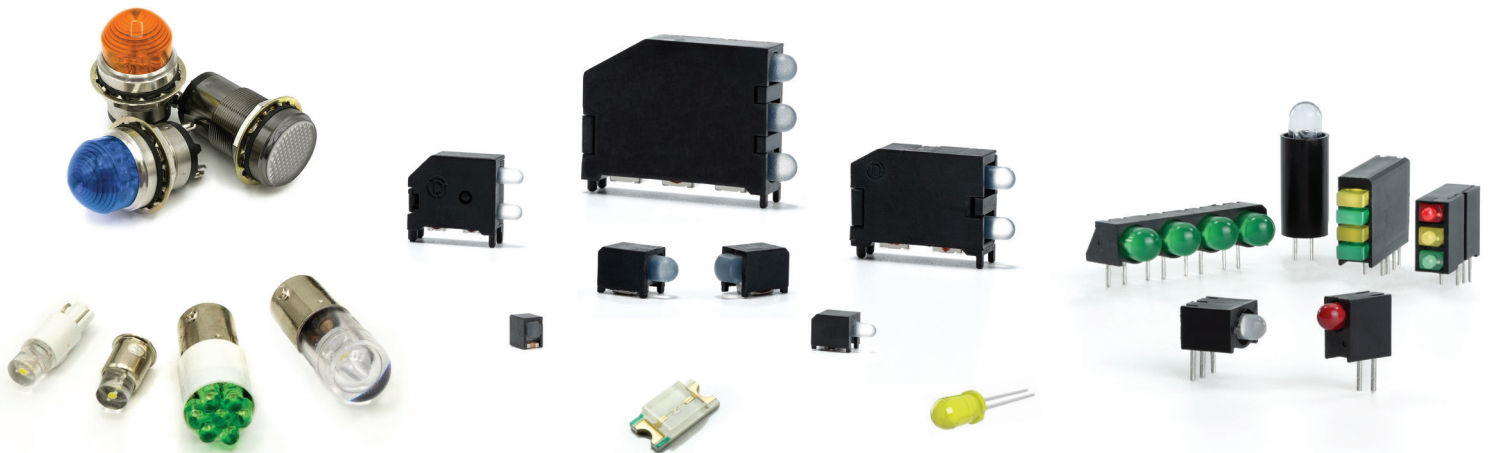


Lighting The Way

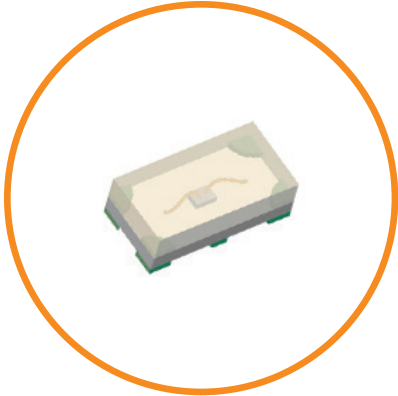
Founded in 1938, Dialight is a leading supplier of Optoelectronic components, and an innovator in LED board-level through-hole and surface mount indication, including Prism[®] SMDs and Optopipe[®] Light Pipes.

Combined with our LED panel mount line and based LED bulbs, we offer the widest range of reliable indicator products.

It is our commitment to our customers to continue to provide the most reliable, high-quality LED products, with best-in-class service and support.



Surface Mount LEDs



598 8A SERIES

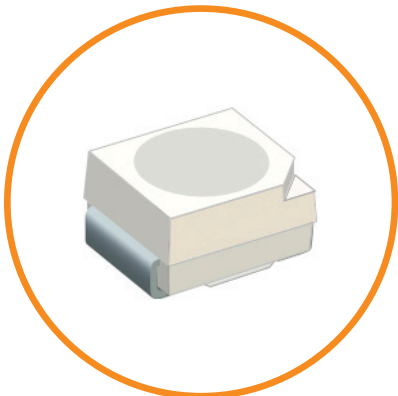
0402 Low Current

Features & benefits

- Ultra-miniature package
- Ideal for size constraint applications
- Low-current type is perfect for battery-powered equipment
- Ideal for handheld and battery applications
- Viewing angle 140 degrees
- 5 mA
- 4000 pc/reel
- 1.0 x 0.5 x 0.4mm

Color options:

AllInGAP: ● 635 Red ● 625 Red ● 605 Orange ● 590 Yellow ● 570 Yellow-Green
InGaN: ● 525 Green ● 470Blue



598 8B SERIES

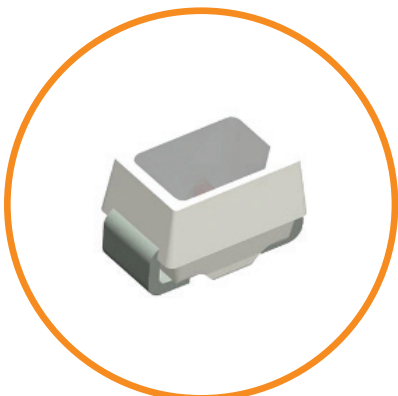
3528 PLCC-2

Features & benefits

- Industry standard PLCC-2 footprint
- Variety of colors with high luminous intensity
- Viewing angle 120 degrees
- -40 to +85C operating temperature
- 20 mA
- 2000 pc/reel
- 3.5 x 2.8 x 1.9mm

Color options:

AllInGAP: ● 635 Red ● 625 Red ● 605 Orange ● 590 Yellow ● 570 Yellow-Green
InGaN: ● 525 Green ● 470Blue



598 8C SERIES

Mini PLCC-2

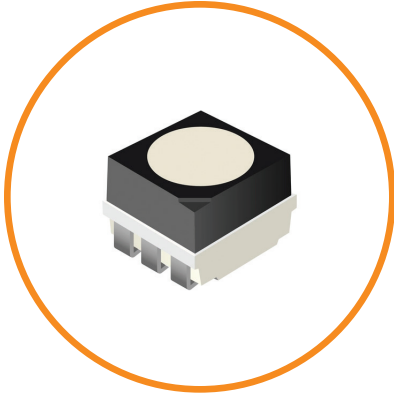
Features & benefits

- Smallest PLCC package available
- Variety of colors with high luminous intensity
- Viewing angle 120 degrees
- 5 mA & 20mA
- 3000 pc/reel
- 2.2 x 1.4 x 1.3mm

Color options:

AllInGAP: ● 635 Red ● 625 Red ● 605 Orange ● 590 Yellow ● 570 Yellow-Green
InGaN: ● 525 Green ● 470Blue

Surface Mount LEDs



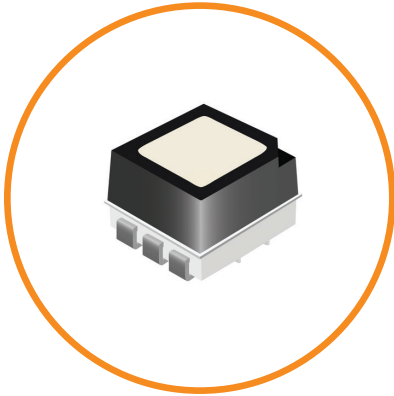
598 8F SERIES

598-8F10-313F 3735 PLCC-6

Features & benefits

- Surface non-reflective black appearance
- Compatible with Pb-free reflow soldering process
- High luminous intensity
- Low power consumption
- Good reliability and long life
- RoHS compliant
- -30°C to 85°C operating temperature range
- 20 mA
- 5a moisture sensitivity level
- Viewing angle 120 degrees
- 1000V ESD
- 3.7 × 3.5 × 2.8 mm

Color options: ● Red ● Green ● Blue



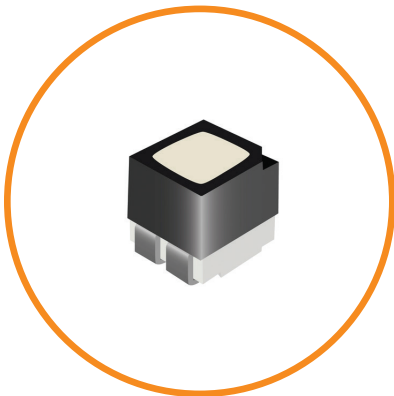
598 8G SERIES

598-8G10-313F 2827 PLCC-6

Features & benefits

- Surface non-reflective black appearance
- Compatible with Pb-free reflow soldering process
- High luminous intensity
- Low power consumption
- Good reliability and long life
- RoHS compliant
- -30°C to 85°C operating temperature range
- 20 mA
- 5a moisture sensitivity level
- Viewing angle 110 degrees
- 1000V ESD
- 2.8 × 2.7 × 2.45mm

Color options: ● Red ● Green ● Blue



598 8H SERIES

598-8H10-313F 1515 PLCC-4

Features & benefits

- Surface non-reflective black appearance
- Compatible with Pb-free reflow soldering process
- High luminous intensity
- Low power consumption
- Good reliability and long life
- RoHS compliant
- -30°C to 85°C operating temperature range
- 20 mA
- 5a moisture sensitivity level
- Viewing angle 110 degrees
- 1000V ESD
- 1.5 × 1.5 × 1.6 mm

Color options: ● Red ● Green ● Blue

Surface Mount LEDs



598 8J SERIES

598-8JX0-103F PLCC-4

Features & benefits

- Top view SMT LED with domed lens
- Ultra-high intensity and 50mA power
- Narrow viewing angle at 30 degrees features focused radiation in a compact high-reliability LED package
- Compatible with IR soldering process
- Compliant with AEC-Q102 standard for automotive applications
- RoHS compliant
- -40°C to +100°C operating temperature range
- 2 moisture sensitivity level
- 3.2 × 2.8 × 3.5 mm

Color options: ● Red ● Yellow ● Red-Orange ● Blue ● Green



597 SERIES

597-6XX2-107F 1206 PKG

Features & benefits

- Reverse mount SMD LED with domed lens
- High intensity and narrow viewing angle at 30 degrees features focused radiation
- Designed to emit light through a small cut-out hole in the PCB
- Ideal for narrow space and height constraint applications
- Ideal for applications where light bleeding is a problem
- Compatible with automatic placement machine
- RoHS compliant
- -40°C to +85°C operating temperature range
- 20 mA
- 3 moisture sensitivity level
- 3.2 × 1.6 × 1.6 mm

Color options: ● Red ● Orange ● Yellow ● Yellow-Green ● Green ● Blue



599 SERIES

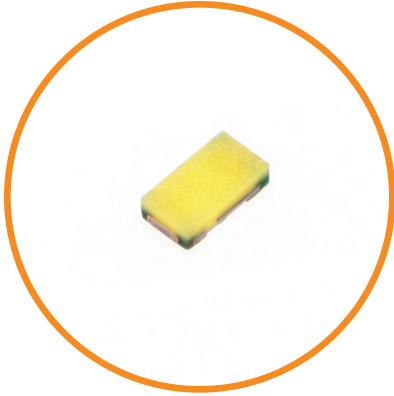
599-2310-42XF 3030 PKG

Features & benefits

- For dynamic color control plus pure white light from a single surface mount package
- 3 × 3 × 0.65 mm
- Wide 120 degree viewing angle
- Compatible with automatic placement machine
- RoHS compliant
- -40°C to +105°C operating temperature range
- 20 mA
- 3 moisture sensitivity level

Color options: ● Red ● Green ● Blue ○ White

White Surface Mount LEDs



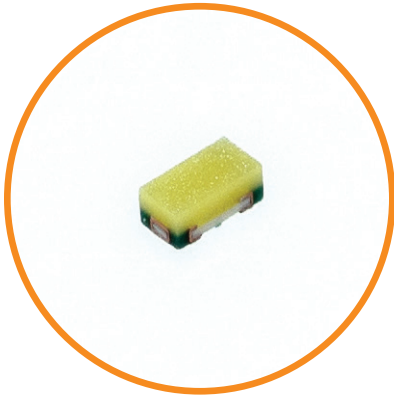
598 SERIES

598-2A00-10XF 0402 PKG Top View

Features & benefits

- Neutral White 350-530mcd
- For low power and battery-operated applications.
- 1 × 0.5 × 0.25 mm
- Wide 140 degree viewing angle
- Compatible with automatic placement machine
- RoHS compliant
- -40°C to +85°C operating temperature range
- Low current 5 mA
- 3 moisture sensitivity level

Color options: ○ White



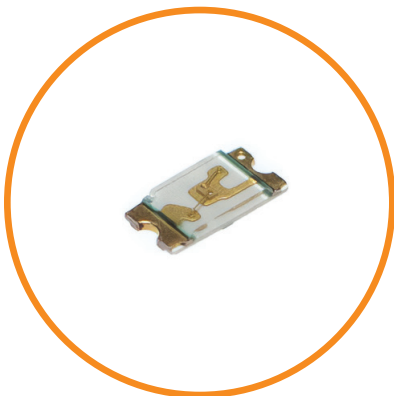
598 SERIES

598-2A01-10XF 0402 PKG Top View

Features & benefits

- Neutral White 600-1400mcd
- 1.0 × 0.5 × 0.4mm
- Wide 140 degree viewing angle
- Compatible with automatic placement machine
- RoHS compliant
- -40°C to +85°C operating temperature range
- 20 mA
- 3 moisture sensitivity level

Color options: ○ White



598 SERIES

598-2N00-10XF 0603 PKG Top View

Features & benefits

- Cool White 430-1000mcd
- 1.6 × 0.8 × 0.25mm
- Wide 140 degree viewing angle
- Compatible with automatic placement machine
- RoHS compliant
- -40°C to +85°C operating temperature range
- 20 mA
- 3 moisture sensitivity level

Color options: ○ White

White Surface Mount LEDs



598 SERIES

598-2003-10XF 0603 PKG Top View

Features & benefits

- Cool White 230-1200mcd
- 1.6 x 0.8 x 0.4mm
- Wide 140 degree viewing angle
- Compatible with automatic placement machine
- RoHS compliant
- -40°C to +85°C operating temperature range
- 20 mA
- 3 moisture sensitivity level

Color options: ○ White



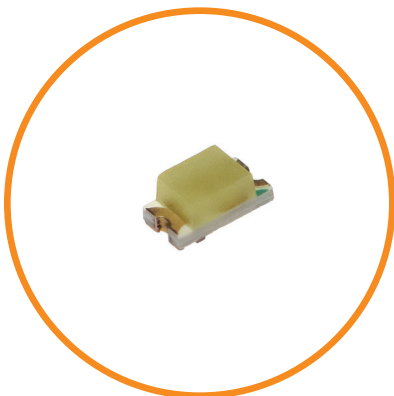
598 SERIES

598-2L01-10XF / 598-2L00-10XF 0603 PKG Mini PLCC With Reflector Cup

Features & benefits

- Cool White
 - 598-2L00-10XF: 150-800mcd
 - 598-2L01-10XF: 1200-2800mcd
- 1.6 x 0.8 x 0.55mm
- 598-2L00-10XF: 5 mA for low power and battery-operated applications
- 598-2L01-10XF: 20 mA
- Wide 140 degree viewing angle
- Compatible with automatic placement machine
- RoHS compliant
- -40°C to +85°C operating temperature range
- 3 moisture sensitivity level

Color options: ○ White



598 SERIES

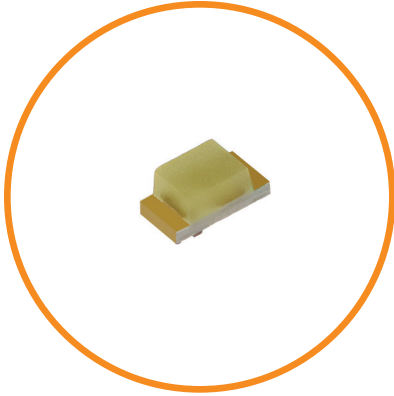
598-2002-10XF 0603 PKG Top View

Features & benefits

- Cool White 280-800mcd
- 1.6 x 0.8 x 0.7mm
- 20 mA
- Wide 140 degree viewing angle
- Compatible with automatic placement machine
- RoHS compliant
- -40°C to +85°C operating temperature range
- 3 moisture sensitivity level

Color options: ○ White

White Surface Mount LEDs



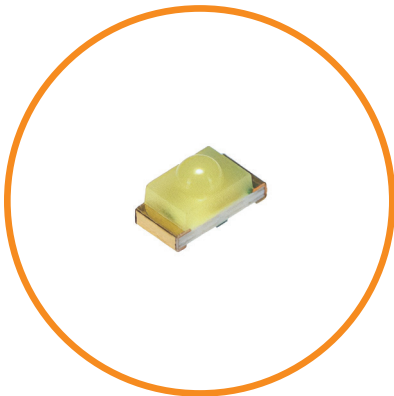
598 SERIES

598-2000-10XF / 598-2005-10XF 0603 PKG Top View

Features & benefits

- Neutral White
 - 598-2000-10XF: 65 -200mcd
 - 598-2005-10XF: 500-1000mcd
- 1.6 x 0.8 x 0.7mm
- 598-2000-10XF: 5 mA for low power and battery-operated applications.
- 598-2005-10XF: 20 mA
- Wide 140 degree viewing angle
- Compatible with automatic placement machine
- RoHS compliant
- -40°C to +85°C operating temperature range
- 3 moisture sensitivity level

Color options: ○ White



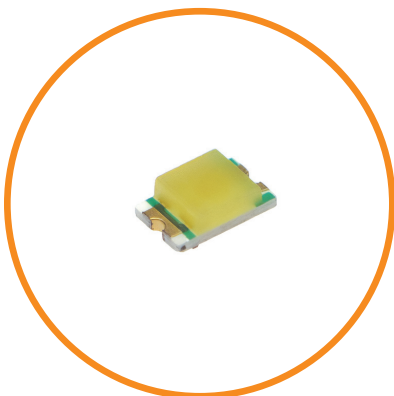
598 SERIES

598-2E00-10XF 0603 PKG With Dome Lens

Features & benefits

- Cool White 350-800mcd
- 1.6 x 0.8 x 0.93mm
- 20 mA
- Domed lens for wide 160 degree viewing angle
- Compatible with automatic placement machine
- RoHS compliant
- -40°C to +85°C operating temperature range
- 3 moisture sensitivity level

Color options: ○ White



598 SERIES

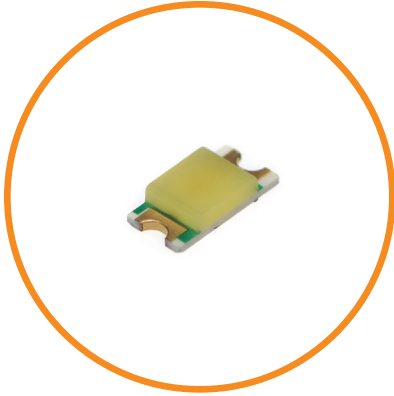
598-2102-10XF / 598-2103-10XF / 598-2105-10XF 0805 PKG Top View

Features & benefits

- Cool White
 - 598-2102-10XF: 63-350mcd
 - 598-2103-10XF: 150-700mcd
 - 598-2105-10XF: 600 – 1000mcd
- 2.0 x 1.25 x 0.7mm
- 598-2102-10XF / 598-2103-10XF: 5 mA for low power and battery-operated applications
- 598-2105-10XF: 20 mA
- Wide 140 degree viewing angle
- Compatible with automatic placement machine
- RoHS compliant
- -40°C to +85°C operating temperature range
- 3 moisture sensitivity level

Color options: ○ White

White Surface Mount LEDs



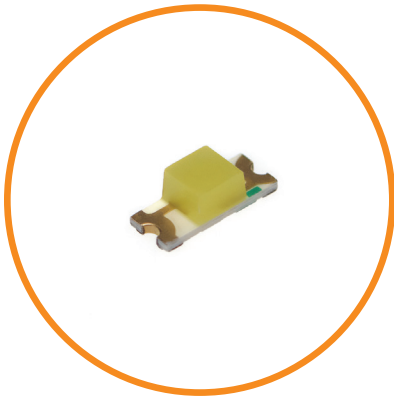
598 SERIES

598-2200-10XF 1206 PKG Top View

Features & benefits

- Cool White 500-1000mcd
- 3.2 x 1.6 x 0.7mm
- 20 mA
- Wide 140 degree viewing angle
- Compatible with automatic placement machine
- RoHS compliant
- -40°C to +85°C operating temperature range
- 3 moisture sensitivity level

Color options: ○ White



598 SERIES

598-2K00-10XF 1206 PKG Reverse Mount

Features & benefits

- Neutral White 100-350mcd
- 3.2 x 1.25 x 1.1mm
- 5 mA for low power and battery-operated applications
- Wide 140 degree viewing angle
- Compatible with automatic placement machine
- RoHS compliant
- -40°C to +85°C operating temperature range
- 3 moisture sensitivity level

Color options: ○ White



598 SERIES

598-2M00-10XF 1206 PKG With Dome Lens

Features & benefits

- Cool White 280-650mcd
- 3.2 x 1.6 x 1.88mm
- 20 mA
- Wide 140 degree viewing angle
- Compatible with automatic placement machine
- RoHS compliant
- -40°C to +85°C operating temperature range
- 3 moisture sensitivity level

Color options: ○ White

LED Panel Mount Indicators



620, 621, 622 & 623 SERIES

Heavy Duty Panel Mount Indicators

Features & benefits

- Modern, attractive design
- Metal LED indicator for rugged applications
- Wide range of voltages 3V, 6V, 12V, 24V
- Variety of colors and RGB illumination available
- Different terminal options for easy installation
- Durable stainless steel housing
- Designed for indoor / outdoor applications

Certifications & ratings

- RoHS compliant
- IP66 / IP67
- IK10
- NEMA 4X



556 SERIES

Constant Intensity Panel Mount Indicators

Features & benefits

- Designed for rugged, outdoor applications in 1" mounting holes
- Combines InGaN and AlInGaP for maximum light output and reliable visibility
- Ensures continuous indication on battery-operated equipment that will not decline as voltage depletes, 18-48V DC operating voltage
- Designed for indoor / outdoor applications

Certifications & ratings

- IP66
- RoHS compliant w/ 6C exemption
- NEMA 4X
- IK07



653, 654 & 655 SERIES

Snap-In Panel Mount Indicators

Features & benefits

- Low cost solution panel mount LED that allows for mounting to panels with 0.027" to 0.138" thicknesses
- Designed with flexible tabs and wire leads
- Mounting hole sizes: 0.50", 0.579", 0.657"
- Variety of colors and voltage options
- Press fit installation

Certifications & ratings

- RoHS compliant

LED Panel Mount Indicators



630 SERIES

30mm Panel Mount Indicators

630-1X0X-304F (Flat lens) / 630-3X0X-304F (Domed lens)

Features & benefits

- Largest mounting hole size of 30mm (1.18") available with flat and domed lens
- Highly durable brass housing with white nickel plating designed for indoor / outdoor applications
- Variety of high light output colors including white
- Daylight viewable

Certifications & ratings

- UL 1598 (E156890) • IP66 • NEMA 4X
- RoHS compliant w/ 6C exemption • IK07



677 SERIES

7mm High Intensity Panel Mount Indicators

677-1X2X-3XXF in Black Nickel

Features & benefits

- Protruding LED Lens with 7.2mm panel mount hole size
- High brightness LEDs in a variety of colors
- Highly durable brass housing with black nickel plating to provide corrosion resistance
- Maintains excellent electrical conductivity and low reflectivity

Certifications & ratings

- RoHS compliant • NEMA 4X (with gasket) • IP66 (with gasket)IK07



656 SERIES IN 48 VDC

High Intensity LED Panel Mount Indicators

656-1XXA-X0XF

Features & benefits

- 12.7mm (0.50") LED panel mount available with voltage option 48V DC
- High luminous intensity LEDs in red, green, and yellow with domed lens and flat lens
- Available with wire leads and blade terminals
- Brass housing available with white nickel plating and black nickel plating
- Daylight viewable

Certifications & ratings

- NEMA 4X • UL1598: wire leads — UL listed; terminals — UL recognized
- IP66 / 67 • RoHS compliant w/ 6C exemption

LED Panel Mount Indicators



559 RECTANGLE SERIES

Snap-In LED

0.216 x 0.139" (5.49 x 3.53mm) Mounting Hole

Features & benefits

- The only rectangular panel mount indicator
- Simple, press fit installation
- 2mm x 4mm rectangular LED available in a variety of colors including bi-color
- Diffused lens with wide viewing angle
- UL94V-0 rated black housing

Certifications & ratings

- RoHS compliant



657 BI- AND TRI-COLOR SERIES

Watertight Series Panel Mount Indicators

Features & benefits

- Flat and domed lens options
- 5 bi-color options and 2 tri-color options available
- Highly durable, watertight polycarbonate housing
- Completely sealed and potted
- 11/16" (17.46mm) mounting hole size
- Voltage options from 10-30 VDC

Certifications & ratings

- RoHS compliant • NEMA 4X • IP67



658 BI- AND TRI-COLOR SERIES

Watertight Series Panel Mount Indicators

Features & benefits

- Largest multi-colored mounting size option with 1.00" (25.4mm) mounting hole
- Highly durable, watertight polycarbonate housing
- Completely sealed and potted
- 5 bi-color options and 2 tri-color options available
- Voltage options from 12-30 VDC
- Designed for indoor / outdoor applications
- Domed lens

Certifications & ratings

- RoHS compliant • NEMA 4X • IP67

OPTOPIPE® Light Pipes

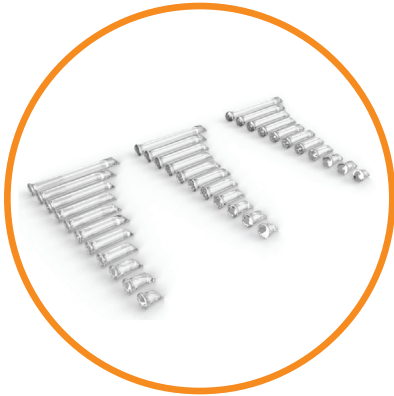


515 SERIES

3mm & 5mm Vertical Panel Mount

Features & benefits

- Easy to install front panel mounting
- High efficiency
- Variable lengths
- 3 lens shapes
- Can be used with any top view LED



515 SERIES

5mm Panel Mount Right Angle

Features & benefits

- The flexibility of Dialight Vertical Optopipes for use with top view LEDs
- Front panel mounting
- Variable lengths
- 3 lens shapes



515 SERIES

1mm, 2mm, 3mm Flush-Mount

Features & benefits

- Our smallest vertical pipe 1mm diameter
- Easy to install
- Tapered output surface for flush recessed mount into a front panel – countersink
- Various lengths .125” to .500”
- Wide variety of mounting sizes

OPTOPIPE® Light Pipes



515 SERIES

3mm Reverse Mount

Features & benefits

- Available lengths from 0.100" (2.54mm) – 1.000" (25.4mm). (Customizable within the given length range)
- Flat and domed lenses for optimal viewing angle (with water clear or diffused lens finish)
- Press fit mount into 0.121" +0.003/-0.002 (3.07mm) panel mount hole
- Suggested drill size 3.1mm metric drill or #31 drill (0.120")
- Material: water-clear polycarbonate, ROHS compliant UL94-V0, UV stabilized, Halogen-free
- Designed for both single and multiple color surface mount LEDs
- Recommended PLCC-2 and PLCC-4, surface mount LEDs part number: 597-XXXX-207F as shown.



515 SERIES

Vertical Board Mount 3mm Diameter Output

Features & benefits

- Lengths varying from .250" to 1.250"
- Three lens styles for optimal viewing angles; Flat, Convex, and Domed
- Designed for both single and multi-color LEDs
- Positive snap-in mounting to .063" ± .007" (1.6 ± 0.178 mm)
- PCB with opaque light barrier
- Low-voltage and minimal power consumption
- Light is produced through photonic emission, not as a by-product of a radiating heat source
- Molded from RoHS compliant UL94-V0 Water Clear Polycarbonate with an oxygen index of 35%
- Designed to be used with Dialight PLCC-2 and PLCC-4 surface mount LEDs 597-XXXX-207F (pad layout shown). See the Surface Mount Selector Guide for LED operating characteristics. Lower profile surface mount LEDs in 598 and 597 series can be used as well as reverse mount LEDs. Please consult factory for availability.

OPTOPIPE® Light Pipes



515 SERIES

Tri-level with Shield

Features & benefits

- Eliminates light bleed
- A fix if smaller chip LEDs are used
- Full enclosed barrier and partial side barrier options available



515 SERIES

High Density Quad Level Assembly

Features & benefits

- Smallest four high pipe on the market
- Available in multiple lens configurations
- Super compact
- 1, 2 or 3 elements top to bottom, or bottom to top
- Integral shielding eliminating light bleed
- Also available with 1, 2 and 3 positions populated



515 SERIES

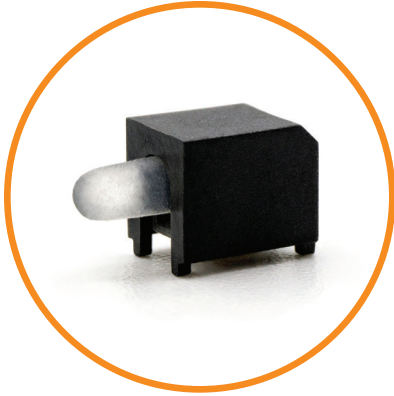
XY Variable Length/Height, Right Angle 515 Series Optopipe® Light Pipes

3mm Diameter Output

Features & benefits

- Lengths varying from .319"–1.772"
- Heights varying from .200"–.500"
- Same board footprint across various heights and lengths
- Easy and secure installation via mounting pins on the housing
- Cost and time savings due to simplified board redesign
- No optical crosstalk, no light bleed
- Offers a high level of ESD protection
- Optical efficiency due to enclosed housing

PRISM® Surface Mount LEDs



594 SERIES

PRISM® Surface Mount LED

1.6mm Round Lens, 20 mA and 2 mA

Features & benefits

- Compatible with automatic placement equipment
- Packaged in 16mm tape, 7" reel (400 pcs/reel), 13" reel (1600 pcs/reel) and 20 piece strips
- Compatible with surface mount reflow soldering processes
- Housing material meets UL-94V-0 flammability ratings
- Design provides increased indication without increased space
- Packaged in moisture barrier bags for dry packaging per IPC/JEDEC J-STD-033
- Helps eliminate mixed technology PC board processing
- MSL2 for 2 mA, MSL3 for 20 mA



596 SERIES

PRISM® Surface Mount LED

1.6mm Round Lens, 20 mA and 2 mA

Features & benefits

- Compatible with automatic placement equipment
- Packaged in 16mm tape, 13" reel (500 pcs/reel) and 10 piece sample strips
- Compatible with surface mount reflow soldering processes
- Housing material meets UL-94V-0 flammability ratings
- Design provides increased indication without increased space
- Helps eliminate mixed technology PC board processing
- Packaged in moisture barrier bags for dry packaging per IPC/JEDEC J-STD-033, MSL2 for 2 mA, MSL3 for 20 mA

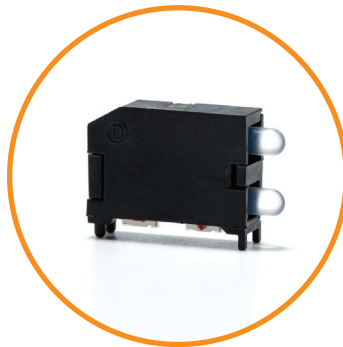
ALSO AVAILABLE



591 SERIES

3mm PRISM®

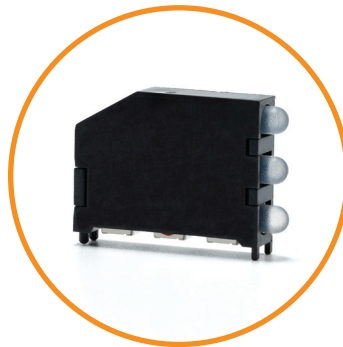
Square and round lens
Single-, bi- and tri-colors



592 SERIES

3mm PRISM®

Bi-level
Single-, bi- and tri-colors



593 SERIES

3mm PRISM®

Tri-level
Single-, bi- and tri-colors



595 SERIES

2mm PRISM®

Single colors
Back-lighting

CBIs and Discrete LEDs



521 SERIES 521-8559F

Features & benefits

- Tri-color red / blue / pure green 5 mm LED
- Common anode and separate cathode leads for each color
- Diffused lens
- 5mm round full-color red/green/blue LED
- 4-leaded type, common anode and separate cathode leads for each color

Certifications & ratings

- RoHS compliant



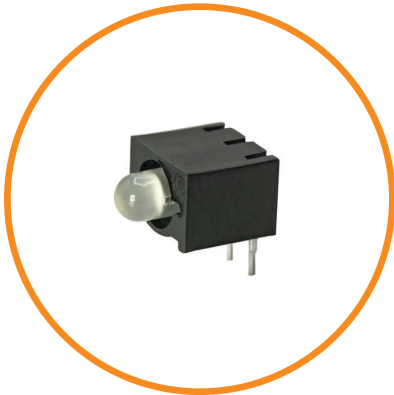
550 SERIES 550-4013F / 550-4014F

Features & benefits

- Tri-color red / blue / green 4-leaded 5mm housed CBI
- Common anode and separate cathode leads for each color
- Diffused lens
- P/N 550-4013F: protruding lens
- P/N 550-4014F: recessed lens for backlight application

Certifications & ratings

- RoHS compliant



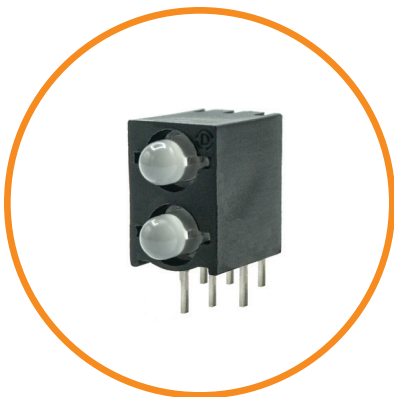
551 SERIES 3mm 3-Leaded Single CBI

Features & benefits

- 551-3513F single CBI
- Bi-color red / green 3mm LED
- White diffused lens

Certifications & ratings

- RoHS compliant



553 SERIES 3mm 3-Leaded Bi-Level CBI

Features & benefits

- 553-3511-600F bi-level CBI
- Bi-color red / green 3 mm LED
- White diffused lens

Certifications & ratings

- RoHS compliant



www.dialightsignalsandcomponents.com