



OPTOELECTRONIC

OVERVIEW

About Dialight

Dialight is a manufacturer of LED products for indication and illumination, with over 50 years of LED experience. Dialight has been in the indication business since 1938. Our primary product groups are Surface Mount LEDs, Light Pipes, Circuit Board Indicators, Panel Mount Indicators and our PRISM® series which incorporates surface mount LEDs with a silicon lens, all products are offered as single-, bi- & tri-colored solutions for a variety of applications. With several production facilities located across the world, as well as a large and comprehensive network of world-wide local distributors, Dialight has and continues to demonstrate the high performance of its supply chain.

Why Use Indication?

LED indicators are the quickest way to convey system status in a clear manner. Dialight offers the most form factors and color options for a wide variety of applications and industries.

Dialight LED indicators indicate:

POWER PRESENCE
SYSTEM STATUS OR ACTION
INFORMATION/DATA FLOW

There are 2 main groups of Dialight LED indicators:

Circuit Board Indicators

installed on a PCB

Through Hole LEDs
Surface Mount LEDs
PRISM® SMD Indicators
OPTOPIPE® Light Pipes*

Panel Mount Indicators

installed into a panel

Panel Mount Indicators
OPTOPIPE® Light Pipes*
Lens Caps
Base and Bulbs

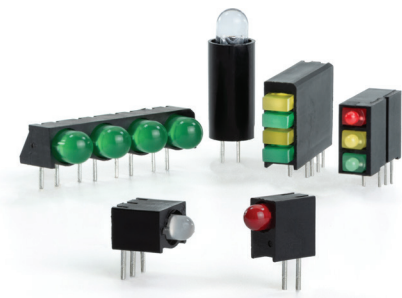
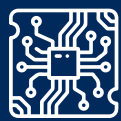
**Light Pipes always require an LED to function as an indicator.*



Common Applications

- Telecom Rack Equipment
- Audio/Video Equipment
- Industrial Robots and Controls
- Portable Equipment Analyzers
- Handheld Controls
- Medical Equipment
- Security System Panels
- Fire Alarm Panels
- Electronic Manufacturing Equipment
- Smoke-/Gas-Detectors
- Data center Infrastructure
- Servers: Rack mount; blade; tower
- Storage: High-performance storage subsystems for high-end enterprise
- Storage Networking Hardware
- Fiber channel host bus adapter cards (HBAs); converged network adapter cards (CNAs); SCSI adapter cards; InfiniBand adapter cards
- Next-Gen Wireless
- Wireless Infrastructure
- Electronic Test & Measurement Instruments
- Networking Equipment for enterprise data centers and telecom communication centers
- Switches, routers, and network control equipment interconnected using fiber optic and high speed wiring
- Communications Testing Equipment
- Process controls
- Automation
- Medical
- Handheld devices
- Battery powered applications (2mA version)
- Military/Aviation
- Oil/Gas/Mining Equipment
- Food Processing
- Marine
- Wire and Harness
- Power Distribution
- Industrial Control Panels
- Test & Measurement
- Traffic controls and Rail Applications
- Transportation
- Fan Trays





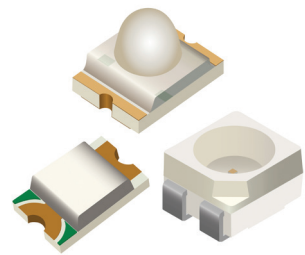
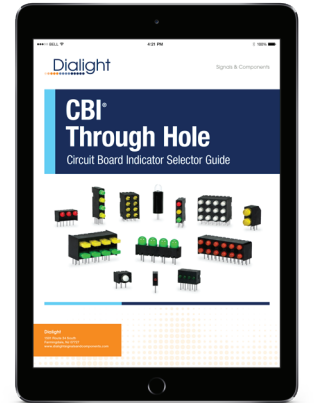
CBI® Through Hole Discrete and housed LEDs

550, 551, 552, 553, 555, 561, 564, 566, 567, 568, 569, 570 and 571 SERIES

Dialight offers the widest range of indicator options in our CBI® Through Hole product line, meeting the needs of almost any requirement. From singles, arrays, colors, and lead lengths, we have you covered. We continue to expand this product range with color combinations, including tri-color, and multi-level configurations.

FEATURES AND BENEFITS

- Right angle, vertical and horizontal arrays in single, bi-, tri- and quad blocks
- 2mm, 3mm, 4mm, 5mm and rectangular LEDs
- Perfect for direct view or backlighting applications
- Single and bi-color, diffused, water-clear, tinted, super-bright and high efficiency
- Over 2500 variations, with custom LED placement available
- All visible colors of the spectrum available (from blue to red)



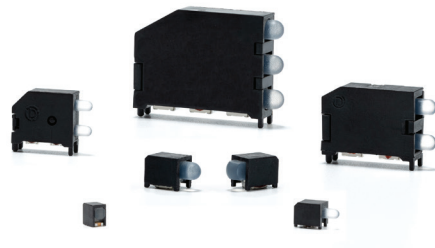
Micro LED® Surface mount LEDs

597, 598 and 599 SERIES

Dialight offers an ever-expanding range of SMT solutions from mini chip LEDs to PLCC packages. These products include low current, reverse mount, right angle, lensed, single and multicolored as well as various intensities. These are ideal for direct view or backlighting applications. Recommended for use with our OPTOPIPE® light pipe products.

FEATURES AND BENEFITS

- Ten different package sizes including: 0402, 0404, 0603, 0606, 0805, 1206, 1208, 1210, 1515, 2827, 3528 / PLCC and 3735
- Single color, bi-color, tri-color in top, right angle, and reverse mount LED configurations
- Latest AlInGaP & InGaN technology
- Cost competitive pricing



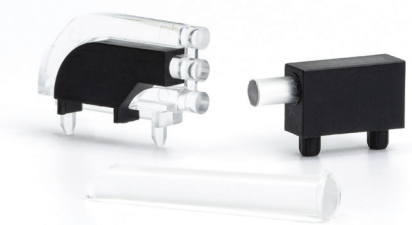
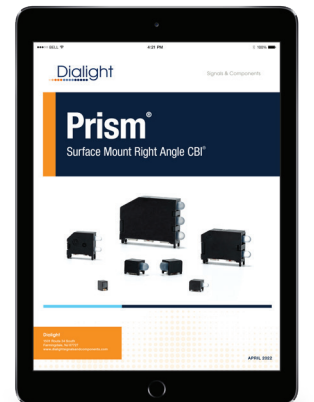
PRISM® Surface Mount Right angle SMDs

591, 592, 593, 594, 595 and 596 SERIES

PRISM® indicators are the total package offering space and cost savings. SMD LED and light pipe housed as one indicator unit. Available in a variety of package sizes including single-, bi-, and tri-level configurations and in 1.6mm, 2mm and 3mm lens sizes with single, bi-, and tri-color options. Tape and reel packaged, pick-and-place compatible.

FEATURES AND BENEFITS

- Fully SMD process compliant part (taped and reeled / pick and place / reflow oven compatible)
- 1.6mm, 2mm and 3mm LEDs
- Can withstand higher temp RoHS solder process and eliminates need for secondary optics or separate process
- Available in standard and low current versions
- Available with square or round lens
- Packaged in single, bi- and tri-level configurations



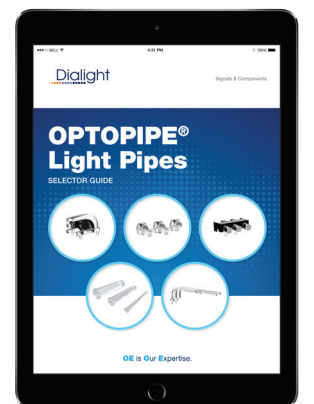
OPTOPIPE® Light Pipes for use with Micro LED® SMDs

515 SERIES

Dialight offers the largest variety of industry-tested and commercially proven light pipes in the market. Single and multi-level/array, vertical and right angle versions, board and panel mounted. Standard and customizable. Designed for maximum optical efficiencies and supported by our large offering SMT LEDs, they provide the end-user with a high-level of design flexibility when it comes to finding the ideal indication solution.

FEATURES AND BENEFITS

- Light pipes act as a conduit for directing light from LED to front panel viewing
- For PCB and panel mount press-fit mounting
- Right angle and vertical versions available in more than 400 sizes and shapes
- Provides ESD protection, operating / storage temperature -30°C to +100°C
- Allows edge lighting around components such as SFP assemblies and RJ45 jacks
- UL 94V-0 Compliant





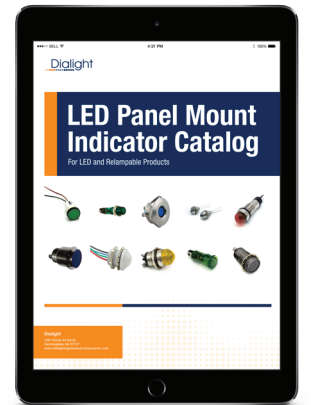
LED Panel Mount Indicators

Plastic and metal housings
249, 507, 556, 557, 558, 559, 605, 606, 607, 608, 609, 610, 612, 620, 621, 622, 623,
630, 653, 654, 655, 656, 657, 658, 675, 676, 677, 678, 679, 680 and 682 SERIES

Dialight offers the largest variety of LED panel mount indicators for all applications and industries. From simple snap-ins to ruggedized indicators designed for tough working environments available in a wide range of mounting hole sizes. Options include IP rated, daylight viewable, terminations, voltages, lens styles, and colors ranging from single-, bi-, to tri-color.

FEATURES AND BENEFITS

- Incorporating the latest LED technology in a tamper-proof metal housing enclosures
- Variety of mounting hole diameters from 0.156" (3.9mm) - 1.18" (30 mm)
- Operating voltages 2-72 VDC, 125 and 230 VAC
- Some feature a water-tight seal to NEMA 4X / IP66/67 and daylight viewability
- 556 & 656 series are UL certified
- RoHS compliant, some with 6C exemptions
- All metal and some plastic housing use lock washer and nut for secure mounting while our 558, 559 and some 600 series use a snap-in plastic housing



Based LED Bulbs

585 and 586 SERIES



Based LED bulbs are light bulbs that use Light Emitting Diodes (LEDs) as the source of light. They are called "based" because they are designed to be used with specific types of light fixtures, such as pin-based fixtures. These bulbs are generally more energy efficient, more durable, and more environmentally friendly than their incandescent counterparts. They are available in a variety of colors and intensities.

FEATURES AND BENEFITS

- Replaces traditional miniature incandescent bulbs with rugged long-lasting and energy-efficient LEDs
- Base styles including: T 1 3/4 Midget Flange, Wedge Base and Bi-Pin, T 3 1/4 Mini-Bayonet and Mini-Screw, T2 Telephone Slide and 15mm Bayonet
- Voltages from 6, 14 and 28 VDC, 6-36 VDC multi-voltage operation and 125 VAC with non-polarized versions available
- Colors include: red, green, yellow, blue and white while our 558, 559 and some 600 series use a snap-in plastic housing

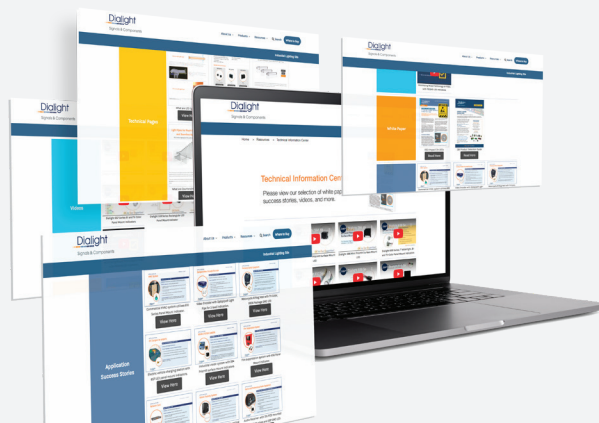
Military and Relampable



Dialight offers a range of military indicators that are designed to meet the rigorous demands of military applications and are used in a wide range of military environments, including aircraft instrumentation, ground vehicle control panels, and shipboard systems. These indicators are available in a variety of configurations, including relampable panel mount indicators, press-to-test indicators, and datalamp series indicators.

FEATURES AND BENEFITS

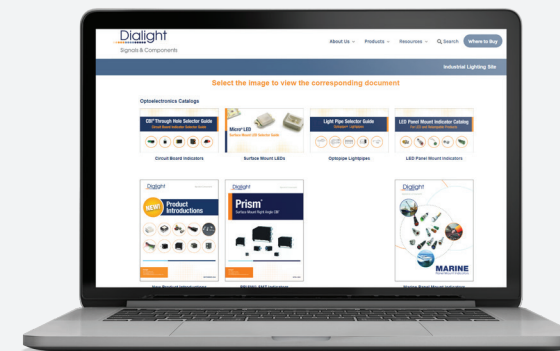
- Military - LH, LC and MS designations and QPL listed
- Incandescent or neon, designed to mount into 15/32", 11/16" and 1" clearance holes
- Feature water-tight and oil-tight, edge lighting, press-to-test, and dimmable semi or total blackout
- Consult Dialight's Military Cross Reference for specific part number
- Commercial - Incandescent or neon indicators UL recognized designed to mount into 15/32", 11/16" and 1" clearance holes
- Lenses are available in flat, dome, torpedo and faceted



Technical Information Center

Visit our Technical Information Center to view the latest videos, white papers, application success stories, technical pages, and more!

www.dialightsignalsandcomponents.com/technical-information-center



Literature Library

Our Literature Library showcases the latest in a wide variety of digital assets, including selector guides, catalogs, and brochures.

www.dialightsignalsandcomponents.com/literature-library

OE is **O**ur **E**xpertise.