

Overview

The SMP interface is a subminiature interface in the same scale as MMCX connectors but offers a frequency range of DC to 40 GHz. It is commonly used in miniaturized high frequency coaxial modules and is offered in both push-on and snap-on mating styles.

SMP fixed length cable assemblies are available and in stock at many of the most common RF distributors. These assemblies offer a SMP Straight Plug to SMP Straight Plug on industry standard Times Microwave Tflex 405 and .085" Conformable cable. Standard lengths range from 3" to 36" with metric lengths also available. TMS reference custom solutions available upon request.

Features and Benefits

- RF performance DC to 26.5 GHz
- Designed to accommodate both radial and axial misalignment
- Push-on and snap-on mating styles for quick installation
- Ideal for high vibration applications

Applications

- Antennas
- Broadband
- Military
- Instrumentation

Amphenol RF

Four Old Newtown Road
Danbury, CT 06810

For more information visit www.amphenolrf.com
or call 800.627.7100

Ordering Information

SMP Cable Assemblies on Tflex 405 Cable



Times Microwave's Tflex 405 is a lighter weight, flexible alternative to semi-rigid coaxial cable. Its Teflon FEP jacket provides protection in corrosive environments and its flexible nature eliminates the need for hand or machine bending.

Part Number	Cable Type	Length (inch)
95-725-107-030	Tflex 405	3.00
95-725-107-040	Tflex 405	4.00
95-725-107-050	Tflex 405	5.00
95-725-107-060	Tflex 405	6.00
95-725-107-070	Tflex 405	7.00
95-725-107-080	Tflex 405	8.00
95-725-107-090	Tflex 405	9.00
95-725-107-100	Tflex 405	10.00
95-725-107-110	Tflex 405	11.00
95-725-107-120	Tflex 405	12.00
95-725-107-180	Tflex 405	18.00
95-725-107-240	Tflex 405	24.00
95-725-107-360	Tflex 405	36.00

SMP Assemblies on .085" Conformable Cable



.085" conformable coaxial cable offers excellent shielding performance and can work with extremely low loss making it a reliable and industry standard semi-rigid cable.

Part Number	Cable Type	Length (inch)
95-725-108-030	.085" Conformable	3.00
95-725-108-040	.085" Conformable	4.00
95-725-108-050	.085" Conformable	5.00
95-725-108-060	.085" Conformable	6.00
95-725-108-070	.085" Conformable	7.00
95-725-108-080	.085" Conformable	8.00
95-725-108-090	.085" Conformable	9.00
95-725-108-100	.085" Conformable	10.00
95-725-108-110	.085" Conformable	11.00
95-725-108-120	.085" Conformable	12.00
95-725-108-180	.085" Conformable	18.00
95-725-108-240	.085" Conformable	24.00
95-725-108-360	.085" Conformable	36.00

Technical Specifications

Electrical

	SMP Cable Assemblies
Impedance	50Ω
Frequency Range	DC - 26.5 GHz
Contact Resistance	Center Contact: ≤6 mΩ
	Outer Contact: ≤2mΩ
Voltage Rating (Sea Level)	≥ 500 VRMS (depending on cable)
Insulation Resistance	5000 MΩ min

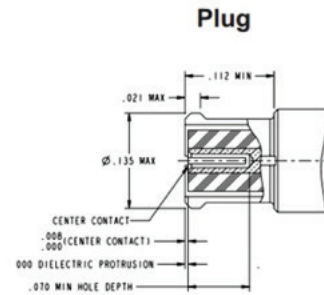
Environmental

Temperature Range	-65°C to +165°C
Thermal Shock	MIL-STD-202, Method 107, cond. C
Vibration	MIL-STD-202, Method 204, cond. B
Mechanical Shock	MIL-STD-202, Method 213, cond. B
Humidity	MIL-STD-202, Method 106, cond. D

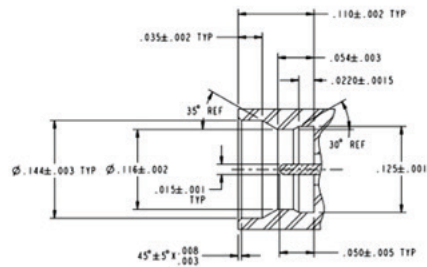
Mechanical

Mating	MIL-STD-348
Engagment Force	≤ 15.0 lbs (40 N)
Disengagement Force	≤0.5 lbs (2N)
Durability (Matings)	100 cycles min

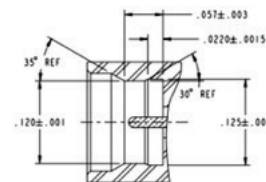
Interface Diagrams



Jack (full detent)



Jack (limited detent)



Jack (smooth bore)

