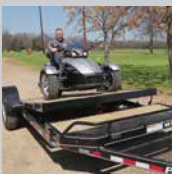
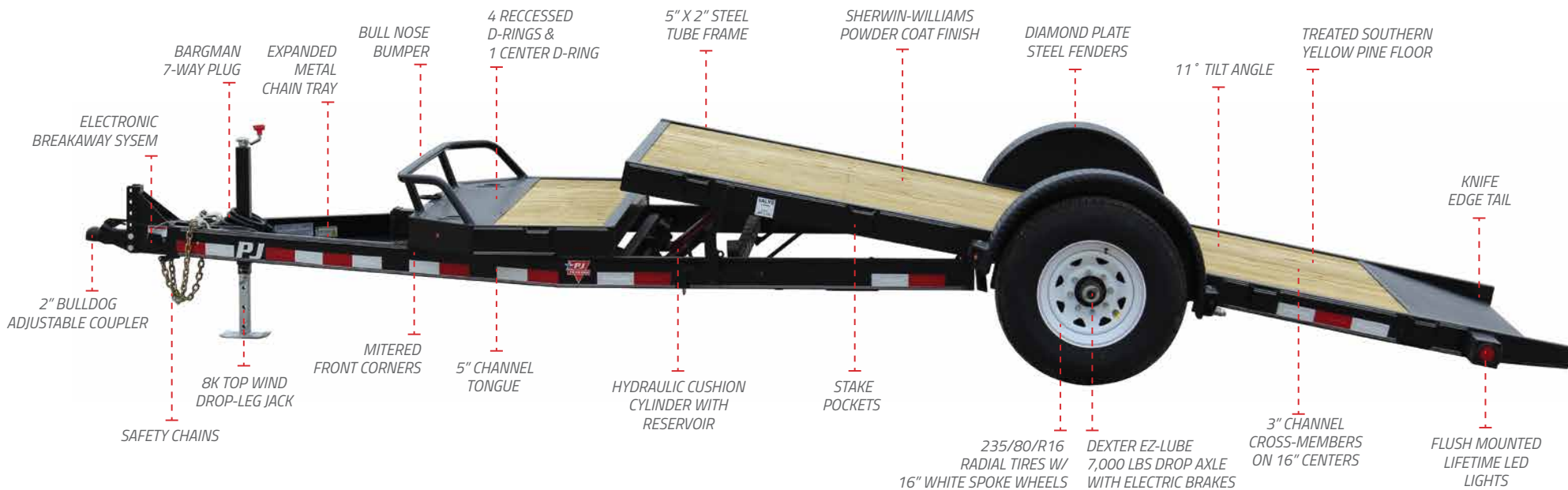


# SINGLE AXLE HD TILT (T1)



Length: 13' -16'    Load Angle: 11°  
 Deck Height: 21"    Deck Width: 81"  
 Couplers: Bumper Pull & Pintle

GVWR: 7,000 lbs  
 Load Capacity: 4,850 lbs (16 ft)  
 Weight: 2,150 lbs (16 ft)



## One Trailer, Thousands of Uses

The T1 is a great all-around trailer for hauling small equipment, tractors, cars, UTVs, & more. It comes with a Dexter 7,000 lbs drop axle that allows you to haul approximately 5,000 lbs of cargo. The T1 is loaded with many standard features that would be an upgrade on competitor's models. These features include, 2" Bulldog Adjustable Coupler, 8k drop-leg jack, chain tray, bull nose bumper, d-rings, 5" channel tongue, 5" x 2" tubing frame, hydraulic cushion cylinder, knife edge tail, and much more.

21"

DECK HEIGHT

7k

BASE GVWR

2 5/16"

ADJUSTABLE COUPLER

5"

CHANNEL TONGUE

3"

CHANNEL CROSSMEMBERS



DIAMOND PLATE STEEL FENDERS

16"

235/80R16 10 PLY RADIAL TIRES



DEXTER DEXTER TORSION AXLES



TORSION SUSPENSION

81"

DECK WIDTH

16"

CROSSMEMBER CENTERS

11°

LOAD ANGLE

8k

TOP WIND DROP LEG JACK



TREATED PINE DECK



7-WAY RV PLUG



LIFETIME LED LIGHTS



SHERWIN-WILLIAMS POWDER COAT