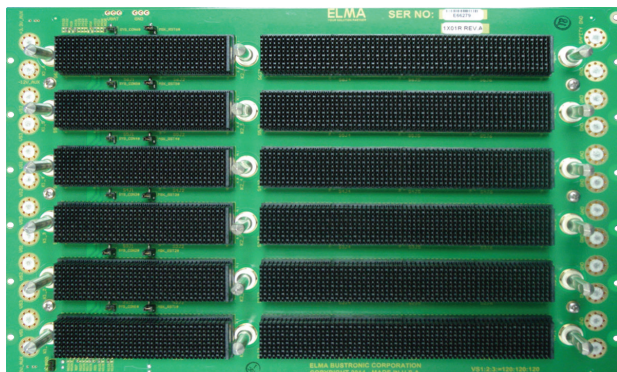


6U 6-Slot OpenVPX Backplane

BKP6-CEN06-11.2.26-3



Description

This 6U OpenVPX backplane features 6 slots. It has a centralized star architecture consisting of four fat pipes to each of 5 slots for the data plane with a baud rate of up to 6.125 Gbps, a dual fat pipe 5 slot expansion plane with a baud rate up to 6.125 Gbps and a centralized star with dual ultra thin pipes to each of 5 slots for the control plane with a baud rate up to 1.25 Gbps. Optional RTM connectors (rear transition modules) for rear I/O support.

Elma offers a variety of backplane topologies to support a wide range of system interconnect requirements. Our VPX backplanes are designed in accordance with the relevant Backplane Profile Descriptions provided within the current ANSI-VITA 46.0 and ANSI-VITA 65 standards.

Features

- Compliant to ANSI/VITA 65-2012 and ANSI/VITA 46.0-2013
- Slot pitch 1.0"
- Single star routing topology
- High-speed MULTIGIG RT-2 connector
- Rugged Eurocard form factor in 6U height
- Provides built in ESD ground protection in every slot

Board Specifications

- 32 layers
- 0.5 oz power and ground layers
- PCB Nelco 4000-13 EP SI
- PCB 0.212" thick

Mechanical Specifications

- 6U height
- 6 slots
- 10.317" tall X 5.93" wide

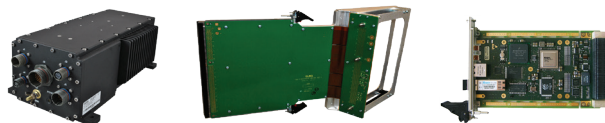
Slot Profiles

- Slot 1 - 5: SLT6-PAY-4F1Q2U2T-10.2.1
- Slot 6: SLT6-SWH-16U20F-10.4.2

Related Products and Applications

Highly integrated applications such as:

- Integrated display processing, mission management and navigational control for avionics systems
- Industrial monitoring, medical equipment, and night-vision systems requiring enhanced graphics capabilities
- Shipboard systems for target tracking and high definition displays
- Applications requiring a mix of I/O options, high compute density and enhanced graphics



- Load boards convection or conduction cooled
- Rear Transition Modules for I/O
- Intel & Freescale Single Board Computers
- Blade level networking boards (Ethernet, PCI Express)
- Rackmount, desktop, and ATR chassis platforms
- Ruggedization programs

VPX

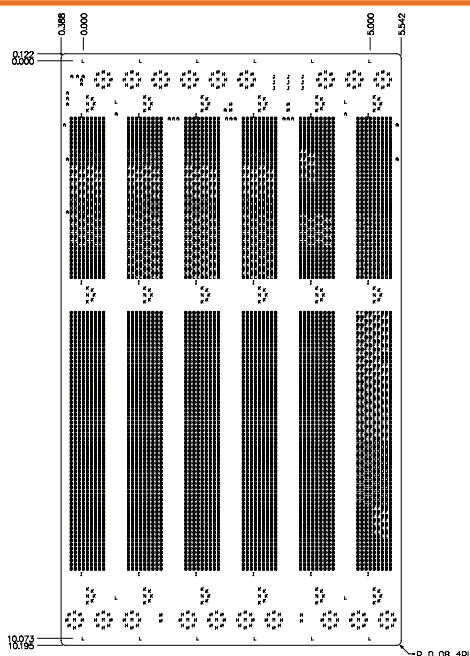


VPX



Backplanes

Line Drawing



Backplane Topology

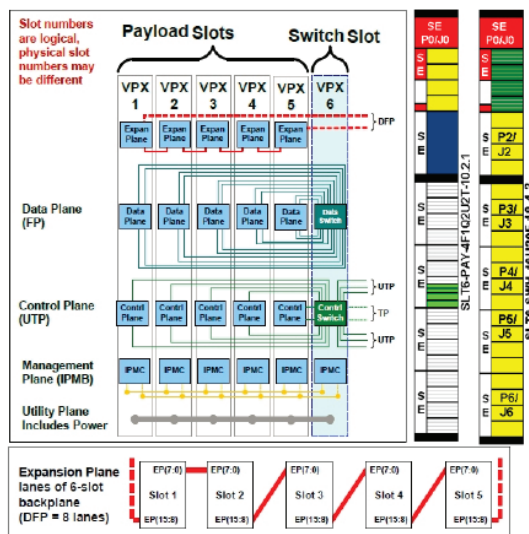


Figure 11.2.26-1 Topology of BKP6-CEN06-11.2.26-n

Order Information

Height	Total Slots	Description	Profile Number	Part Number
6U	6	VPX single star backplane with a data plane with 4 fat pipes to each of 5 payload slots, a dual fat pipe expansion plane and an ultra thin pipe control plane	BKP6-CEN06-11.2.26-3	1OVX606UZ3-1X01R

Please contact our sales for more details.

China: +86 21 5866 5908 Germany: +49 7231 97 34 0 Singapore: +65 6479 8552 United Kingdom: +44 1234 838 822
France: +33 437 06 21 10 Israel: +972 3 930 50 25 Switzerland: +41 44 933 41 11 United States: +1 510 656 3400

For other countries, please visit our website.