

Product description

MAIN FEATURES

The Guardbox 33 is an aluminum enclosure with a timeless design in various sizes and executions. In addition to handiness, shape and color, it impresses with its robust construction. Even in the standard version of the box with ventilation slots, it achieves IP30 and can be upgraded to IP65 without openings (protected against dust and water jets). The enclosure also offers excellent EMC shielding.

- › Sturdy
- › Different sizes | scalable depth
- › No visible screws
- › Optional EMC shielding
- › Heat dissipation with optional ventilation slots
- › Mounting kits for Eurocards
- › Checked for shock and vibration according to EN50155 | EN61373
- › Adjustable folding feet
- › Optional handles

PRODUCT VARIETY

- Standard versions (6 different sizes)
- IP54 combined with EMC protection
- IP65

POSSIBLE CUSTOMIZATIONS

- Depth
- Different colors
- Handles
- Special mounting options
(e.g. wall mounting or installation)

GUARDBOX 33



TYPICAL APPLICATIONS

- Test and measurement equipment
- Laboratory and service equipment
- Equipment on train, trams, etc.

Executions

SIZES

- Enclosure 0: 129.5 x 55 mm
- Enclosure 1: 129.5 x 71.5 mm
- Enclosure 2: 230.5 x 55 mm
- Enclosure 3: 230.5 x 89 mm
- Enclosure 4: 183.5 x 111 mm
- Enclosure 5: 230.5 x 41 mm

Enclosure 0
129.5 x 55 mm

Enclosure 1
129.5 x 71.5 mm

Enclosure 5
230.5 x 41 mm

Enclosure 2
230.5 x 55 mm

Enclosure 3
230.5 x 89 mm

Enclosure 4
183.5 x 111 mm

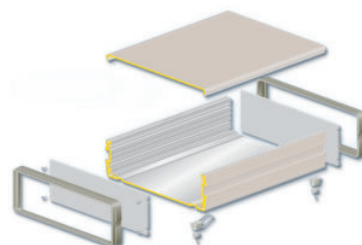
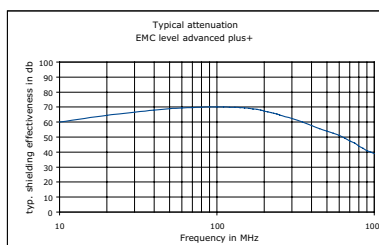
Tailored to customers needs, the Guardbox 33 is available in six different sizes.

EXECUTIONS

STANDARD

Scope of delivery:

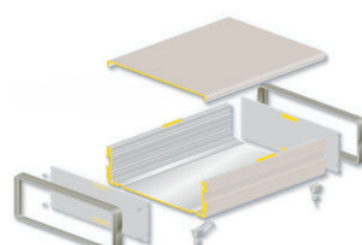
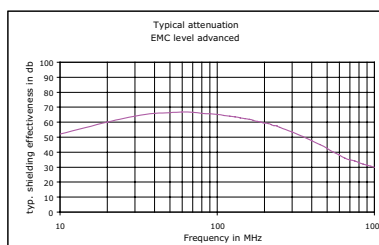
- EMC level basic plus+
- Top and bottom extrusions as well as front panels have conductive connections (this protects electronics from interference)



EMC PROTECTION

Scope of delivery:

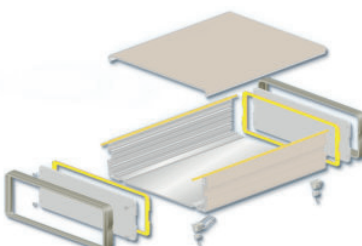
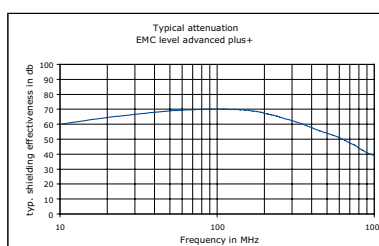
- EMC level advanced
- Standard enclosure and EMC gasket set
- EMC enclosure for demanding applications



IP54 AND EMC PROTECTION

Scope of delivery:

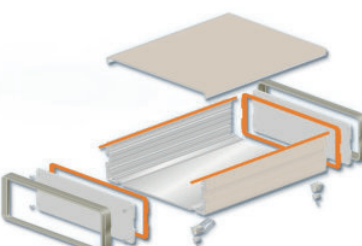
- EMC level advanced plus+
- Standard enclosure and IP54 / EMC set
- EMC enclosure for demanding applications
- Protects electronics from splash water and dust



IP65

Scope of delivery:

- Protects electronics against dust and water jets from all directions



Executions

COLOR (POWDER COATING)

- Bottom and cover: Light gray (RAL 7035), black (RAL 9005), stone gray (RAL 7032), other colors on request (MOQ: 10 pieces, no stock)
- Frame: Light gray (RAL 7035), black (RAL 9011), stone gray (RAL 7030)

COMPLETE ENCLOSURE SETS

Complete enclosure with EMC base level. The sets contain all necessary parts.

Scope of delivery:

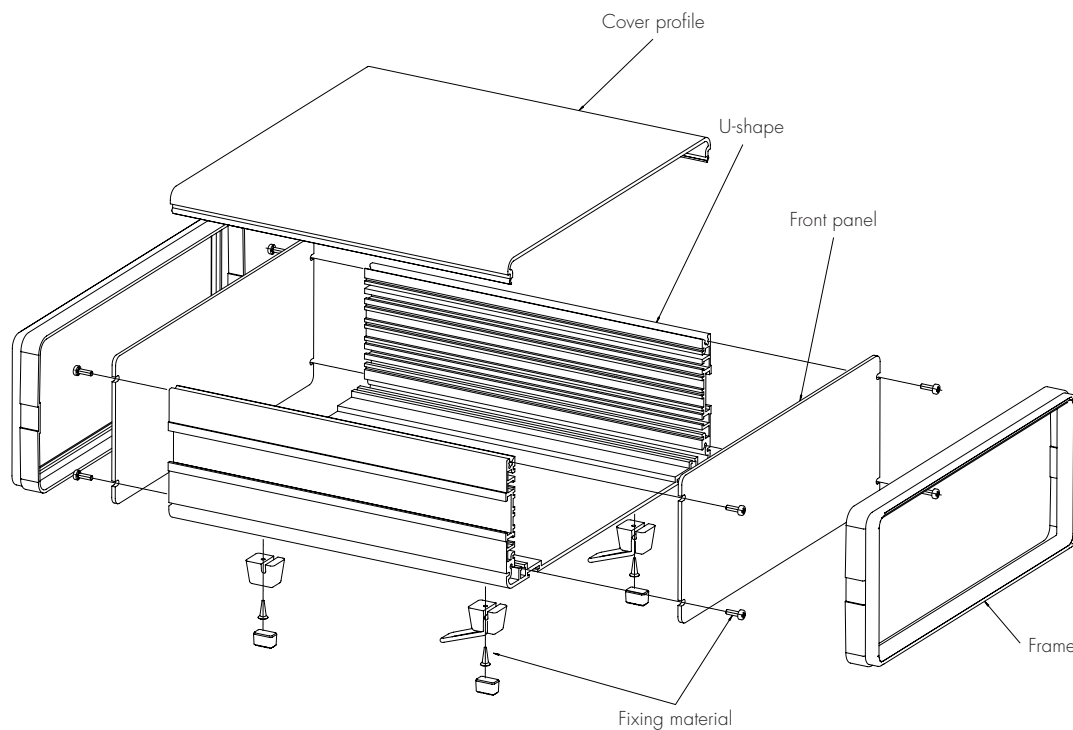
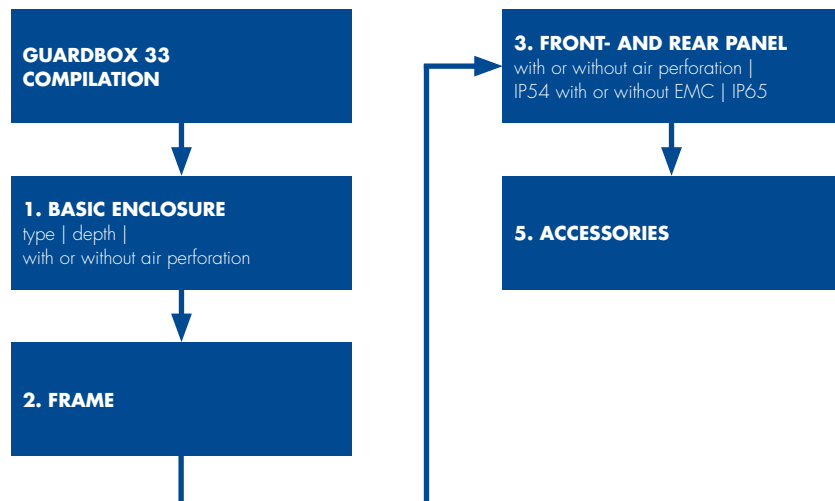
- 1 basic enclosure without air perforation
- 2 frames
- 2 front / rear panels without air perforation
- 1 set assembly material

Enclosure	Color	Depth			
		120 mm 4.72"	180 mm 7.08"	240 mm 9.44"	300 mm 11.81"
0	Black	33E012-25	33E018-25	33E024-25	-
0	Light gray	33E012-45	33E018-45	33E024-45	-
1	Black	33E112-25	33E118-25	33E124-25	-
1	Light gray	33E112-45	33E118-45	33E124-45	-
2	Black	-	-	33E224-25	33E230-25
2	Light gray	-	-	33E224-45	33E230-45
3	Black	-	-	33E324-25	33E330-25
3	Light gray	-	-	33E324-45	33E330-45
4	Black	-	33E418-25	33E424-25	33E430-25
4	Light gray	-	33E418-45	33E424-45	33E430-45
5	Black	-	33E518-25	33E524-25	-
5	Light gray	-	33E518-45	33E524-45	-



Product structure

CONFIGURATION



Product structure

BASIC ENCLOSURE

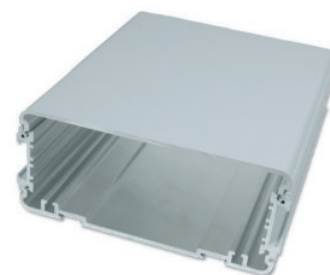
- Aluminum profile
- Powder coated
- With or without air perforation slots in bottom

Scope of delivery:

- 1 U-shaped bottom
- 1 cover

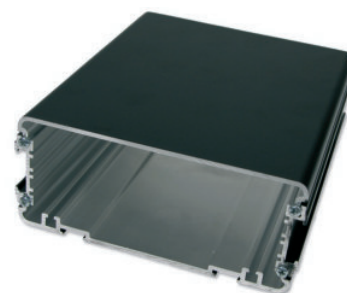
Basic enclosure light gray:

Enclosure	Without air perforation				With air perforation	
Depth mm	120	180	240	300	240	300
Depth inch	4.72	7.08	9.44	11.81	9.44	11.81
0	33E717	33E721	33E725			
1	33E705	33E709	33E713			
2			33E733	33E737	33E734	33E738
3			33E757	33E761	33E758	33E762
4		33E777	33E781	33E785	33E782	33E786
5		33E741	33E744			



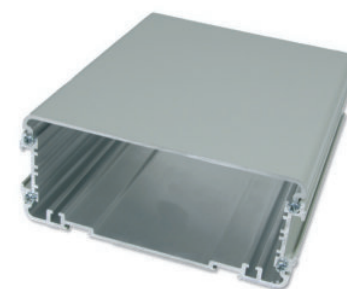
Basic enclosure black:

Enclosure	Without air perforation				With air perforation	
Depth mm	120	180	240	300	240	300
Depth inch	4.72	7.08	9.44	11.81	9.44	11.81
0	33E717-06	33E721-06	33E725-06			
1	33E705-06	33E709-06	33E713-06			
2			33E733-06	33E737-06	33E734-06	33E738-06
3			33E757-06	33E761-06	33E758-06	33E762-06
4		33E777-06	33E781-06	33E785-06	33E782-06	33E786-06
5		33E741-06	33E744-06			



Basic enclosure stone gray:

Enclosure	Without air perforation				With air perforation	
Depth mm	120	180	240	300	240	300
Depth inch	4.72	7.08	9.44	11.81	9.44	11.81
0	33E717-00	33E721-00	33E725-00			
1	33E705-00	33E709-00	33E713-00			
2			33E733-00	33E737-00	33E734-00	33E738-00
3			33E757-00	33E761-00	33E758-00	33E762-00
4		33E777-00	33E781-00	33E785-00	33E782-00	33E786-00
5		33E741-00	33E744-00			



Product structure

FRAME

- Protects the entire enclosure
- High quality plastic, UL94 V-0

Scope of delivery:

- 1 plastic frame
- For one Guardbox 33 two frames have to be ordered



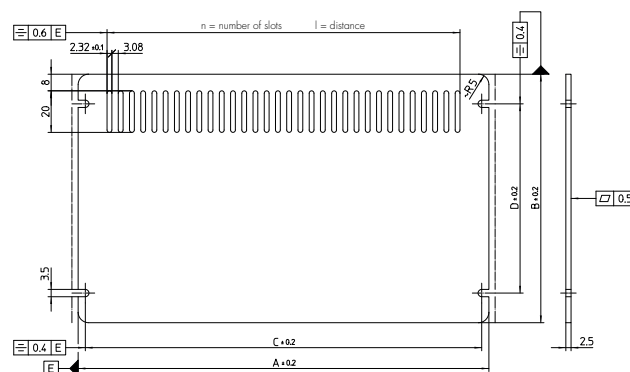
Enclosure	Light gray	Black	Stone gray
0	33-000-03	33-000-06	33-000
1	33-001-03	33-001-06	33-001
2	33-002-03	33-002-06	33-002
3	33-003-03	33-003-06	33-003
4	33-004-03	33-004-06	33-004
5	33-005-03	33-005-06	33-005

FRONT / REAR PANEL

- Front / rear panel of 2.5 mm (0.9") anodised aluminum
- Screwed on the front of the enclosure profiles (give the frame a required stability)
- With or without air perforation
- IP54 / EMC protection and IP65

Scope of delivery:

- 1 front / rear panel with or without air perforation (for one two front / rear panels have to be ordered)
- IP54 / EMC protection and IP65 set: 1 front, 1 rear panel, 2 self-adhesive seals, sealing hose, washers
- Torque of mounting screws (IP protection): 0.7 to 0.75 Nm



Enclosure	Without air perforation	With air perforation	Without air perforation IP65	Without air perforation IP54 / EMC
EMC level	Basic advanced	Basic	-	Advanced plus
0	33E400-50	33E400-51	33-520	33E520
1	33E401-50		33-521	33E521
2	33E402-50	33E402-51	33-522	33E522
3	33E403-50	33E403-51	33-523	33E523
4	33E404-50	33E404-51	33-524	33E524
5	33E405-50		33-525	33E525

Enclosure	A		B		C		D		n	l
	mm	inch	mm	inch	mm	inch	mm	inch		
0	142.3	5.60	63.5	2.50	137.0	5.39	35	1.37	24	126.52
1	142.3	5.60	80	3.14	137.0	5.39	51.5	2.02	24	126.52
2	243.3	9.57	63.5	2.50	238.4	9.38	35	1.37	40	212.92
3	244.4	9.62	97.5	3.83	238.4	9.38	69	2.71	40	212.92
4	197.5	7.77	119.5	4.70	190.6	7.50	91	3.58	32	169.72
5	243.3	9.57	49.5	1.94	238.4	9.38	21	0.82	-	-

Product structure

REPLACEMENT SEALS IP54 / EMC

- Foamed plastic conductive PET-PU black, UL94 V-0
- Self-adhesive seals

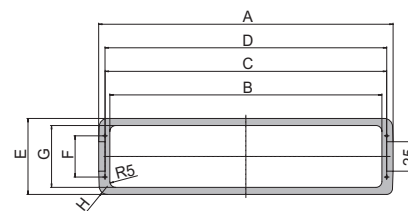
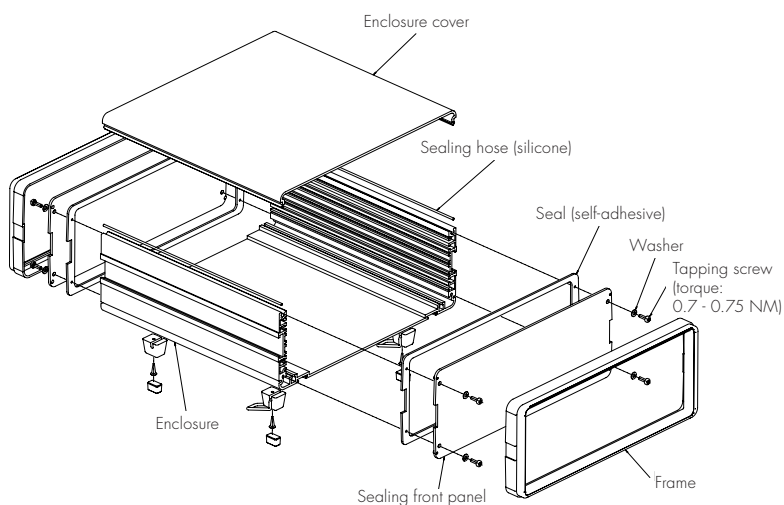
Enclosure	Part No.
0	33E510
1	33E511
2	33E512
3	33E513
4	33E514

REPLACEMENT SEALS IP65

- Foamed plastic PCV gray, UL94 V-0
- Self-adhesive seals

Enclosure	Part No.
0	33-510
1	33-511
2	33-512
3	33-513
4	33-514

Enclosure	A		B		C		D		E		F		G		H	
	mm	inch	mm	inch	mm	inch	mm	inch	mm	inch	mm	inch	mm	inch	mm	inch
0	149	5.86	130	5.11	137	5.39	138	5.43	64.5	2.53	35	1.37	52.5	2.06	R6.5	0.25
1	149	5.86	130	5.11	137	5.39	138	5.43	81	3.18	51.5	2.02	69	2.71	R6.5	0.25
2	250	9.84	231	9.09	239	9.40	239	9.40	64.5	2.53	35	1.37	52.5	2.06	R7	0.27
3	251	9.88	231	9.09	239	9.40	240	9.44	98	3.85	69	2.71	86	3.38	R7	0.27
4	204	8.03	184	7.24	191	7.51	193	7.59	120.5	4.74	91	3.58	108.5	4.27	R7.5	0.29
5	249.5	9.82	231	9.09	239	9.40	239	9.40	50	1.96	21	0.82	38	1.49	R7	0.27



Assembly Material

One set with all necessary materials for mounting one Guardbox 33.

Scope of delivery:

- 4 feet (2 folding feet, UL94 V-0) incl. screws
- 4 tapping screws to assemble the enclosure
- Assembly material for internal extension (10 screws M3 x 8, 10 screw nut M3, 10 nut holders)

Enclosure	Light gray	Black	Stone gray
0 - 4	33-640	33-620	33-621
5	33-641	33-624	33-622

ASSEMBLY INSTRUCTIONS

Scope of delivery:

- Detailed assembly instruction (1 page)

Description	Part No.
EMC protection	33E100
Standard, IP65 and IP54 / EMC protection	33-200

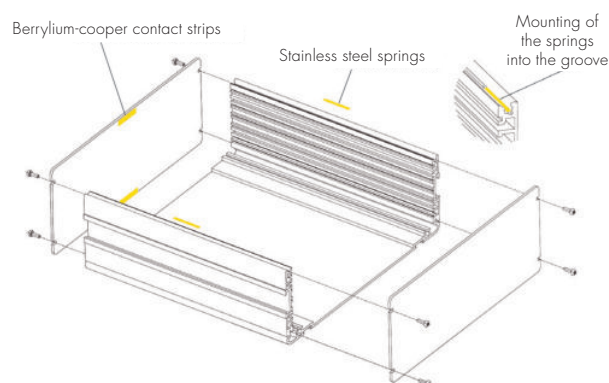
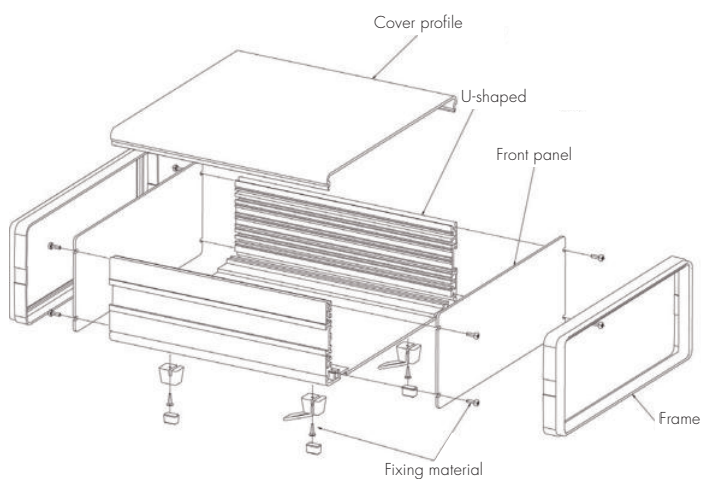
SUPPLEMENTARY EMC GASKET SET

- For EMC level advanced, when using no air perforations
- For EMC level basic, when using air perforations
- Increased EMC level by approximate 10 dB

Scope of delivery:

- 4 beryllium-cooper contact strips
- 2 stainless steel springs

Enclosure	Description	Part No.
0 - 5	Increased by approx. 10 dB	33-642



Accessories

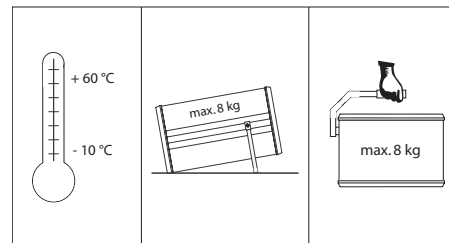
CARRYING HANDLES

- Powder-coated zinc die-cast
- Handle piece: Black polyurethane, UL94 V-0
- Handle can be attached to any position on the side of the groove
- Handle is 90° detent (carrying position has a slight detent)
- According to the enclosure in two widths available

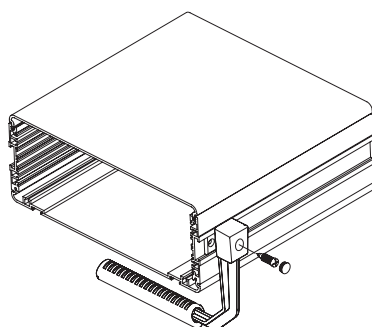
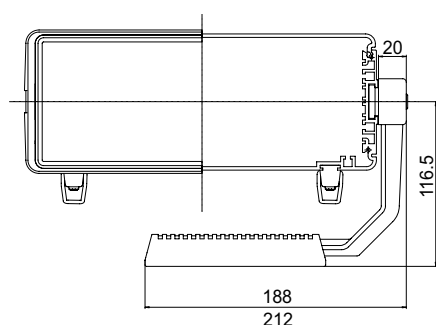
Scope of delivery:

- 1 pre-assembled handle with assembly material

Color	Part No. 212 mm (8.34") for enclosure 2 and 3	Part No. 188 mm (7.40") for enclosure 4
Light gray	33-635	33-636
Black	33-645	33-646
Stone gray	33-630	33-631



Carrying capacity depends on distribution of load and handling. Decreases with dynamic stress.



BRACKET FOR MOUNTING IN CONSOLES

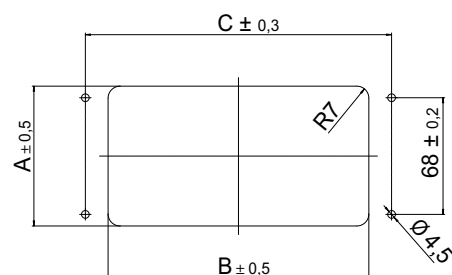
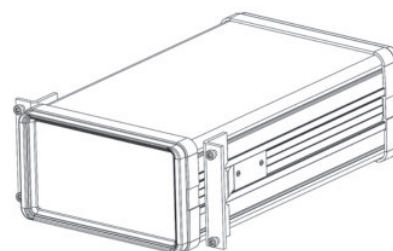
- Mounting brackets of 3 mm (0.11") aluminum sheet
- Angles are pushed to the side of the grooves and with 2 grub screws each M4 x 6 mm positioned
- With mounting brackets as a built-in enclosure in control panels etc. usable

Scope of delivery:

- 2 mounting brackets
- 4 screws M4 x 6 mm

Description	Part No.
For enclosure 0 - 4	33-650

Enclosure	A		B		C	
	mm	inch	mm	inch	mm	inch
0	65	2.55	152	5.98	178.5	7.02
1	81.5	3.2	152	5.98	178.5	7.02
2	65	2.55	253	9.96	279.5	11
3	99	3.89	254	10	280.5	11.02
4	121	4.76	207	8.14	233.5	9.19



Accessories

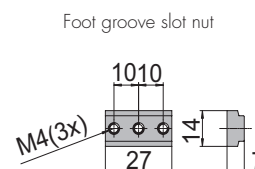
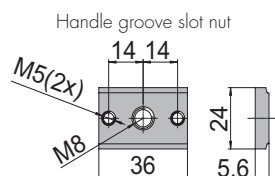
HANDLE CHANNEL AND FOOT SLOT NUT

- Sliding blocks expand the fastening options
- Handle channel stones are pushed into the side groove of the enclosure
- Foot slot nut are used instead of the feet

Scope of delivery:

- Sliding blocks incl. screws

Enclosure	Description	Scope of delivery	Part No.
0 - 4	Handle groove	1 piece	33-665
0 - 5	Foot groove	4 pieces	33-666



SINGLE EUROCARDS MOUNTING SETS

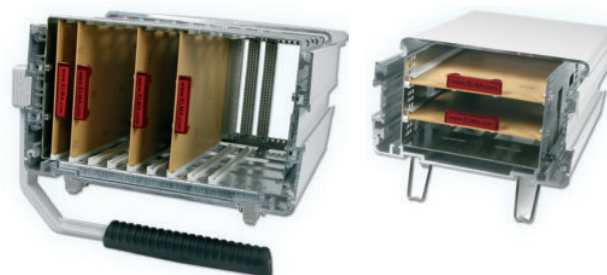
- For the installation of Eurocards 100 x 160 mm (3.93 x 6.29") with connectors according to IEC60603-2
- Card carrier 1 mm (0.03") galvanized sheet steel for the installation of the enclosure 0 - 4
- Other use: Vertical mounting of cards in enclosure size 4 (fastening lugs have to be removed)

Scope of delivery:

- 1 card carrier
- Assembly material in set
- A mounting plate has to be ordered if cards are to be mounted horizontally in enclosure sizes 2, 3 and 4

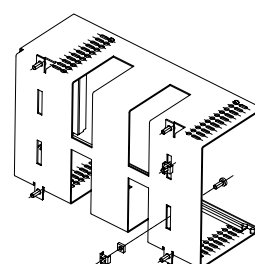
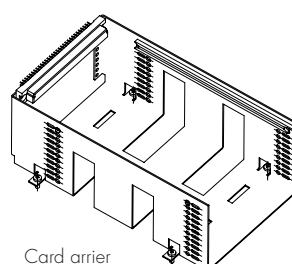
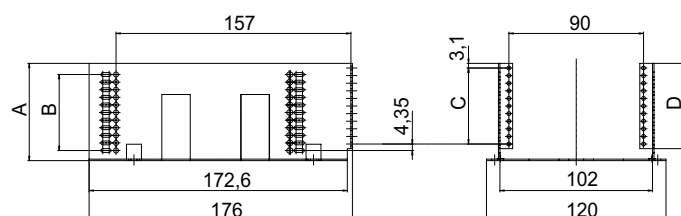
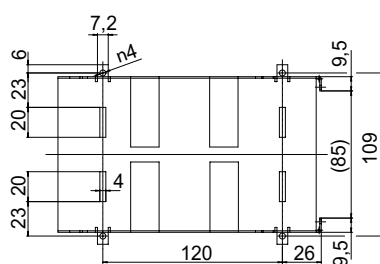
Enclosure	Mounting of cards	Part No.
1, 3 and 4	horizontal	33-205
0 and 2	horizontal	33-204
4	vertical	33-210

Other versions
on request



Card mounting horizontally:

Enclosure	A		B		C		D	
	mm	inch	mm	inch	mm	inch	mm	inch
0 and 2	49.76	1.95	7 x 5.08	0.2	7 x 5.08	0.2	41.76	1.64
1, 3 and 4	65	2.55	10 x 5.08	0.2	10 x 5.08	0.2	57	2.24



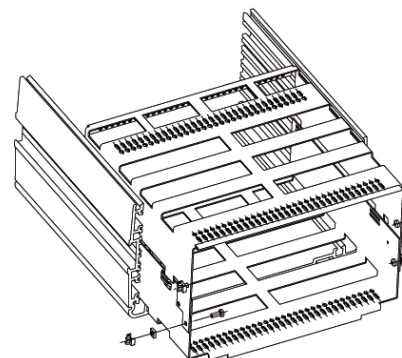
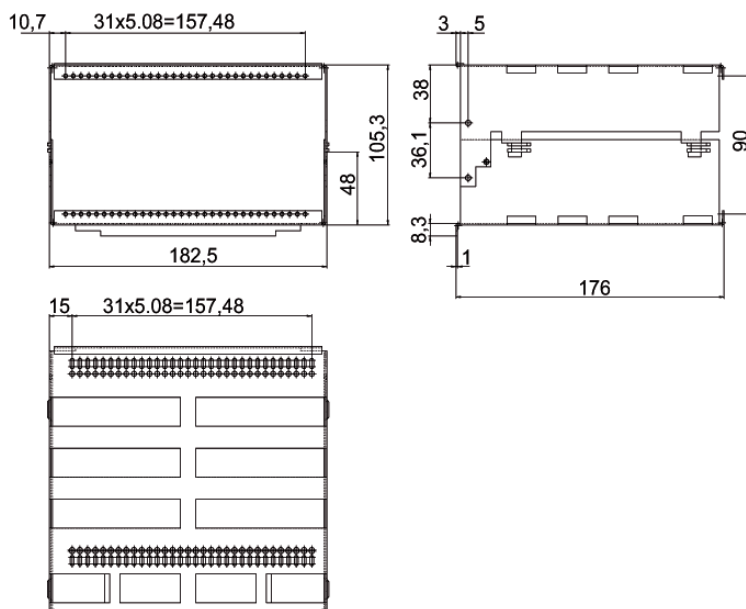
Fastening lugs
(cards mounted vertically)

Note:
For vertical mounting of cards in
enclosure size 4, fastening lugs
have to be removed

Accessories

SINGLE EUROCARDS MOUNTING SETS

Card mounting vertically | enclosure 4



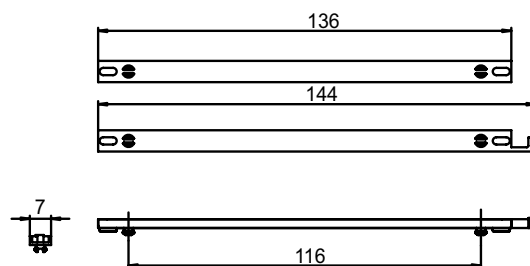
CARD GUIDES

- In each pair, one card guide is fitted with a card locking mechanism
- Light gray UL94 V-0

Scope of delivery:

- Card guides in pairs

Enclosure size	Part No.
160 mm (6.29")	61-034



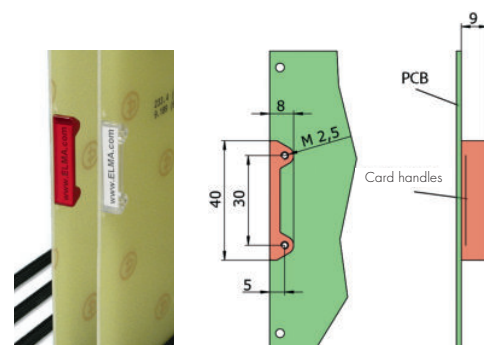
CARD HANDLES

- Card handles made of transparent plastic for better access and labeling of the plug-in plates

Scope of delivery:

- 1 card handle
- Two screws per card handle M2.5 x 5 are needed (ordered separately)

Description	Color	Part No.
Card handle	clear	1091-51
	red	1091-54
Cylindrical screw M2.5 x 5		5571-05
Cylinder head screw torx T8 (M2.5 x 5)		5470-07



Accessories

MOUNTING SET FOR PLUG-IN UNITS (SINGLE EUROCARDS)

- Galvanised sheet steel plug-in sub-unit allowing 3 U plug-in units (Eurocards 100 x 160 mm with IEC60603-2 connectors and flat or extruded front panels) to be mounted horizontally in the Guardbox 33
- Installation height 12 HP
- Enclosure front panel 129.2 x 61 mm (5.08 x 2.40") is made from 2.5 mm thick anodised sheet aluminum

Scope of delivery:

- 1 plug-in card carrier sub-unit
- 1 front panel with opening for enclosure 1
- Assembly material for sub-unit

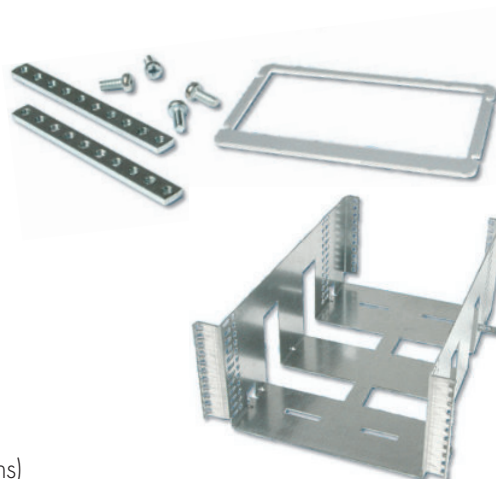
Mounting set for plug-in units (single Eurocards):

Description	Part No.
Complete sub-unit for enclosure 1	33-207

Sub-unit for enclosure 3 and 4:

- The sub-unit can also be used for enclosure 3 and 4.
(front panel can be manufactured with openings to your own specifications)
- The corresponding mounting plate must be ordered to install the plug-in block

Description	Part No.
Plug-in block	33-210
Assembly material for plug-in unit	33-616



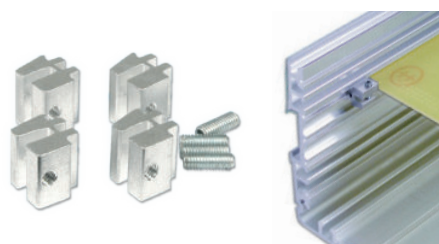
CARD STOP SET

- Card stoppers are used for card fixation of double Eurocards, if these are installed directly in enclosures 2, 3 and 5

Scope of delivery:

- 4 card stopper made of aluminum profile
- 4 hexagon socket set screws
- 1 hexagon socket key

Enclosure	Part No.
0 - 5	33-618



Accessories

MOUNTING PLATES

- Mounting plates of 2 mm (0.07") thick sheet aluminum
- Dimensions correspond to the respective enclosure size
- Position of the slots allows various mounting arrangements and good air circulation
- The mounting plate is screwed to the grooved enclosure profile

Scope of delivery:

- 1 mounting plate, aluminum raw
- Assembly material included in the basic set



Enclosure	Part No. 180 mm 7.08 inch	Part No. 240 mm 9.44 inch	Part No. 300 mm 11.81 inch
0 and 1	33-313	33-314	
2, 3 and 5		33-324	33-325
4		33-344	

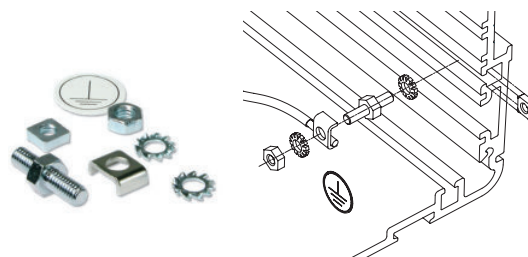
EARTHING TERMINAL

Front panel screws:

- Earthing terminal enables EN / VDE / NIV-compliant earthing

Scope of delivery:

- 1 earthing nut M3.5
- 1 threaded bolt M3.5
- 1 clamp bracket
- 2 serrated washers
- 1 nut M3.5
- 1 earthing symbol

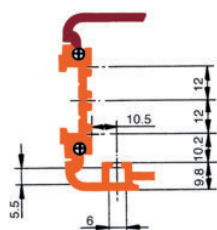


Enclosure	Description	Part No.
0 - 5	Earthing terminal	33-619

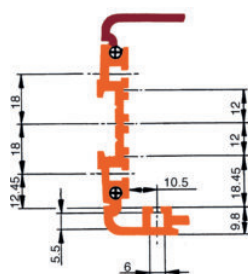
Drawings and dimensions

CROSS SECTIONS OF EXTRUSIONS

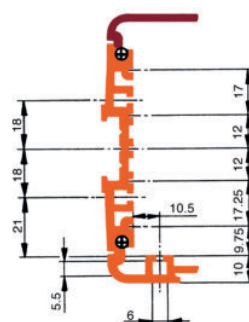
Enclosure 0 | 2



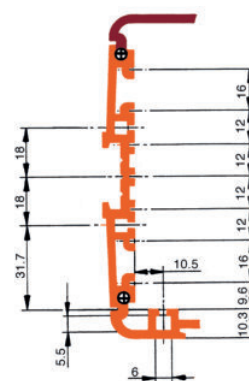
Enclosure 1



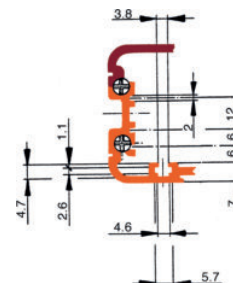
Enclosure 3



Enclosure 4

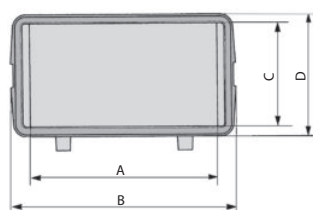


Enclosure 5

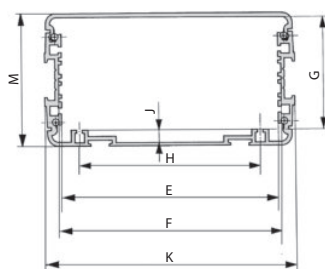


DIMENSION DRAWINGS

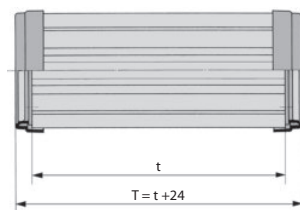
Front view



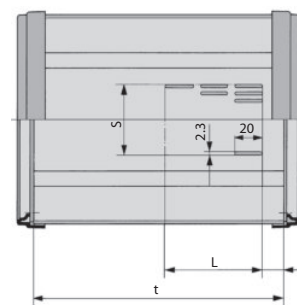
Internal dimensions



Side view



Bottom air perforation



Type		A	B	C	D	E	F Nominal mass	F Board mass	G	H	J	K	M ±0.5	S	L t = 240 9.44"	L t = 300 11.81"	t = 120 4.72"	t = 180 7.08"	t = 240 9.44"	t = 300 11.81"
0	mm inch	129.5 5.1	155.5 6.12	55 2.16	69 2.71	130 5.12	134 5.27	133 5.23	51.7 2.03	109 4.29	7.5 0.29	151 5.94	64 2.52				✓	✓	✓	
1	mm inch	129.5 5.1	155.5 6.12	71.5 2.81	85.5 3.37	130 5.12	134 5.27	133 5.23	68.4 2.69	109 4.29	7.5 0.29	151 5.94	80.5 3.17				✓	✓	✓	
2	mm inch	230.5 9.07	256.5 10.1	55 2.16	69 2.71	231 9.09	235 9.25	233.35 9.18	51.7 2.03	210 8.26	7.5 0.29	252 9.92	64 2.52	148.1 5.83	45 1.77	45 1.77			✓	✓
3	mm inch	230.5 9.07	257.5 10.14	89 3.5	103 4.05	231 9.09	235 9.25	233.35 9.18	85.5 3.36	210 8.26	7.5 0.29	253 9.96	98 3.86	148.1 5.83	45 1.77	70 2.75			✓	✓
4	mm inch	183.5 7.22	210.5 8.29	111 4.37	125 4.92	184 7.24	188 7.4	186.6 7.34	106.9 4.21	163 6.41	7.5 0.29	206 8.11	120 4.72	104.9 4.13	70 2.75	70 2.75		✓	✓	✓
5	mm inch	230.5 9.07	256.5 10.1	41 1.61	56 2.2	231 9.09	235 9.25	233.35 9.18	43 1.69	210 8.26	4.7 0.18	249.5 9.82	50 1.97					✓	✓	

Norms

IP PROTECTION CLASSES


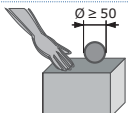
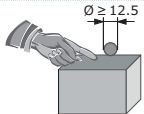
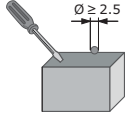
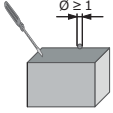
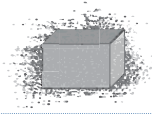
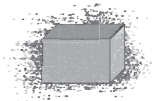
- Protection against contact and foreign bodies according to IEC60529
- Protection against water according to IEC60529


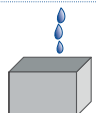

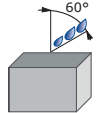
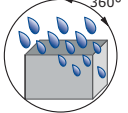
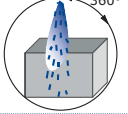

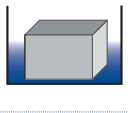
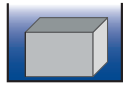
Evaluation of classification:

- The test results according to the standard do not entirely exclude leaks and an individual test is therefore recommended in critical cases (with the actual equipment layout)
- The protection class for cabinets and enclosures is specified by IP (International protection) and two indices

Example IP55

- └ Protection against penetration by water jets from all directions
- └ Complete protection against contact with internal parts and against dust deposition

First index	Contact protection	Foreign body protection
0 	No special protection	
1 	Against large areas of body	Large objects $\varnothing \geq 50 \text{ mm (1.97")}$
2 	Against fingers or objects of similar size	Medium-sized objects $\varnothing \geq 12.5 \text{ mm (0.49")}$
3 	Against tools, wires, etc. with a thickness of $> 2.5 \text{ mm}$	Small objects $\varnothing \geq 2.5 \text{ mm (0.10")}$
4 	Against tools, wires, etc. with thickness $> 1 \text{ mm}$	Grain-like objects $\varnothing \geq 1.0 \text{ mm (0.04")}$
5 	Complete protection	Dust-protected: Dust deposits are permitted, but their volume must not affect the function of the unit
6 	Complete protection	Dust-proof

Second index	Water protection
0 	No special protection
1 	Against water dripping vertically
2 	Against water dripping at an angle (up to 15° from the vertical)
3 	Against spray water (any direction up to 60° from the vertical)
4 	Against spray water from all directions
5 	Against water jets from a nozzle in all directions
6 	Against inundation
7 	Against immersion
8 	Against submersion

Tests

ENVIRONMENTAL AND MECHANICAL TESTS

The Guardbox 33 was tested after the following tests:

- Vibration EN50155 (EN61373)
- Shock EN60068-2-27
- IP protection IEC60529
- Salt spray test DIN50021

Detail information to environmental and mechanical tests:

Tests	Information
Vibration EN50155 (EN61373, category 1, class B)	Eff. acceleration: 7.9 m / s ² Duration: 5 h / axis Frequency: 5 to 150 Hz Axis of stimulation: X, Y, Z
Shock EN60068-2-27	Shockform: Halfsinus Acceleration: 150 m / s ² Duration: 11 ms Number of shocks: 3 / axis Total shocks: 18
IP protection IEC60529	IP65: Guardbox 33 with IP65 sealing set IP54: Guardbox 33 with IP54 / EMC sealing set
Salt spray test DIN50021	Salt concentration: 5 g / l Duration: 96 h Temperature: +35 °C

©Copyright 2018 by Elma Electronic AG, CH-8620 Wetzikon. Subject to technical modifications, all data supplied without liability.

Please contact our sales team for more details.

China: +86 21 5866 5908
France: +33 388 56 72 50

Germany: +49 7231 97 34 0
Israel: +972 3 930 50 25

Singapore: +65 6479 8552
Switzerland: +41 44 933 41 11

United Kingdom: +44 1234 838 822
United States: +1 510 656 3400