

3U 6-SLOT OpenVPX BACKPLANE

BKP3-CEN06-15.2.2-N

DESCRIPTION

Elma's brand of OpenVPX backplanes are designed to meet VITA 65 specifications. The 6 slot OpenVPX features a data plane with 1 Fat Pipe on each slot routed to the switch slot in slot 6. The control plane features an Ultra Thin Pipe on each slot routed to the switch slot. The expansion plane has a Fat Pipe daisy chained on slots 1-5. This backplane makes use of the expansion plane.

FEATURES

- Compliant to the VITA 65 Standard
- Uses the rugged 3U-160 Eurocard form factor
- High-speed EPT Velox connector
- Provides built in ESD ground protection in every slot

BOARD SPECIFICATIONS

- 18 layers
- 1 oz. copper power and ground
- 0.212" thick PCB, FR-4 or equivalent

MECHANICAL SPECIFICATIONS

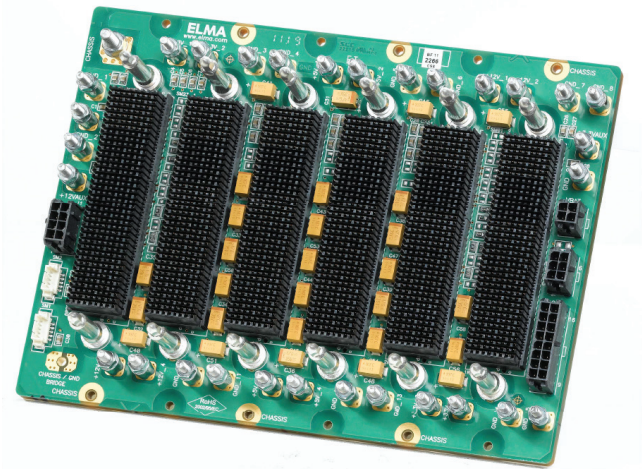
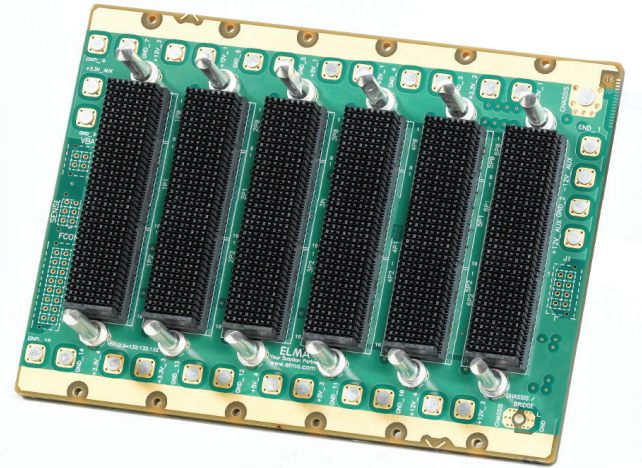
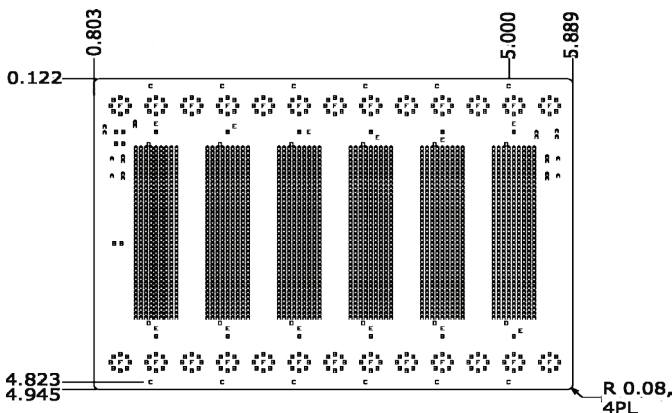
- 5.067" high X 6.692" tall

SLOT PROFILES

- Slot 1-5: . . .SLT3-PAY-1F2F2U-14.2,2
- Slots 6: . . .SLT3-SW4-6F6U-14.4.1

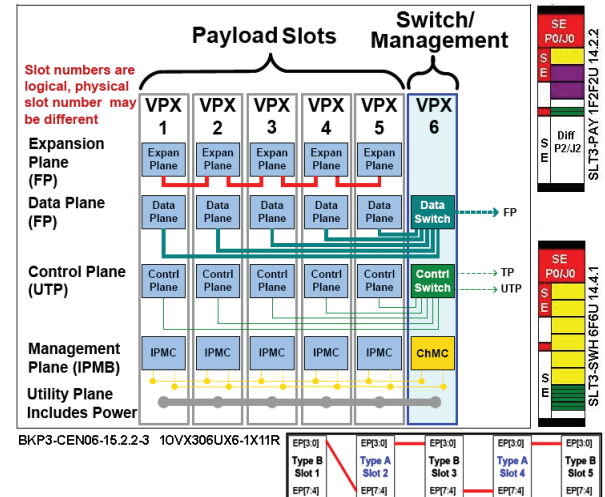
DRAWINGS

BACKPLANE DESIGN



TOPOLOGY

BACKPLANE DESIGN

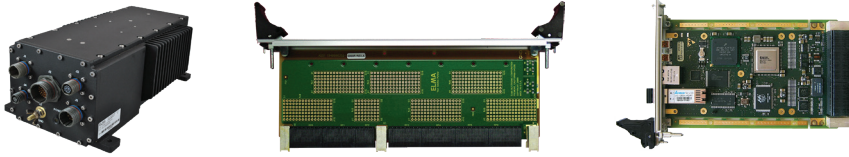


3U 6-SLOT OpenVPX BACKPLANE

BKP3-CEN06-15.2.2-N

APPLICATIONS

- › Integrated display processing, mission management and navigational control for avionics systems
- › Industrial monitoring, medical equipment, and night-vision systems requiring enhanced graphics capabilities
- › Shipboard systems for target tracking and high definition displays
- › Applications requiring a mix of I/O options, high compute density and enhanced graphics

RELATED PRODUCTS

- › Load boards convection or conduction cooled
- › Rear Transition Modules for I/O
- › Intel & Freescale Single Board Computers
- › Blade level networking boards (Ethernet, PCI Express)
- › Rackmount, desktop, and ATR chassis platforms
- › Ruggedization programs

ORDERING INFORMATION

Height	Total Slots	Description	Profile Number	Part Number
3U	6	Single Star data and control plane, daisy chain expansion plane, Gbaud rate to 3.125	BKP3-CEN06-15.2.2-1	1900002443-0000
3U	6	Single Star data and control plane, daisy chain without expansion plane, Gbaud rate to 6.25	BKP3-CEN06-15.2.2-3	1OVX306UX6-1X11R

© Copyright 2019 by Elma Electronic, Inc. Subject to technical modifications, all data supplied without liability.

Please contact our sales team for more details.

China: +86 21 5866 5908
France: +33 388 56 72 50

Germany: +49 7231 97 34 0
Israel: +972 3 930 50 25

Singapore: +65 6479 8552
Switzerland: +41 44 933 41 11

United Kingdom: +44 1234 838 822
United States: +1 510 656 3400