

# VITA 46.11 COMPLIANT SYSTEM MANAGER

## SYSTEM SHELF MANAGER

### DESCRIPTION

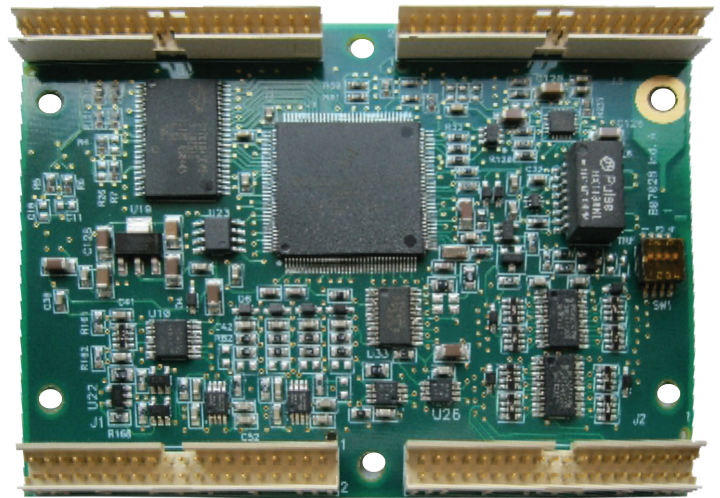
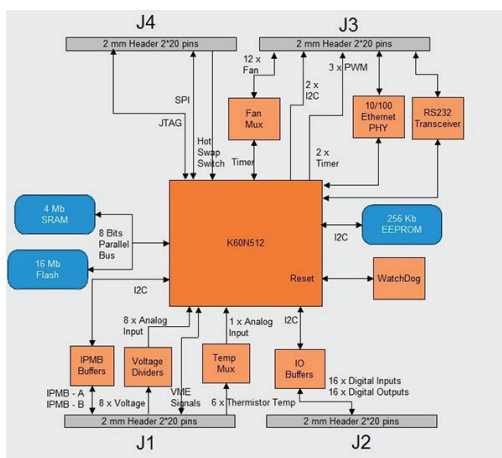
Elma's VPX Chassis Manager assures the proper operation of the chassis and boards in defense embedded computing platforms. It monitors the health of the chassis and the boards, reports anomalies and takes corrective action when ne-cessary. It maintains an inventory of the components and sensors in the chassis and receives event reports and failure notices from boards as well as any intelligent field replaceable units (FRUs) in the chassis. Featuring a redundant IPMB to ensure maximum system uptime, this VITA 46.11 compliant product provides power management and cooling control, event sensor logging, electronic keying, and card hot-swap monitoring. The system includes an intuitive and easy to use GUI compiler for fast and efficient configuration of the FRU and sensor data records (SDRs). The chassis manager and accompanying carrier card can be mounted inside the chassis as required.

VITA 46.11 is the chassis management specification associated with OpenVPX to incorporate intelligent chassis management function requirements as set forth by the new SOSA collaborative standards (Sensor Open Systems Architecture).

### FEATURES

- IPMI Chassis Manager with redundant IPMB
- Redundant intelligent platform management bus (IPMB) for maximum system uptime
- Tier 2 Chassis Manager supporting Tier 1 and Tier 2 IPMCs
- Web based Graphical User Interface
  - Monitors up to 12 fans, 8 analog inputs and 6 external thermistors for temperature measurements
- Provides 16 digital inputs and 16 configurable digital outputs
- Power management
- E-Keying
- Cooling control
- Sensor Event Log
- Input voltage: 3.3VDC
- Extended temperature range: -40°C to +85°C
- Assembly dimensions (carrier card); 100mm x 160mm (3.93" x 6.29")

### DRAWINGS



Chassis Manager



Carrier Card



Chassis Management Assembly

### STANDARDS CONFORMANCE

Elma's System Management product family is compliant with the following specifications:

- VITA 46.11, VPX System Management
- IPMI v1.5, Intelligent Platform Management Specification
- PICMG 3.0 R3.0, Specification for Advanced
- Telecommunications Computing Architecture (ATCA)
- AXIe-1 R2.0, AXIe-1 Base Architecture Specification

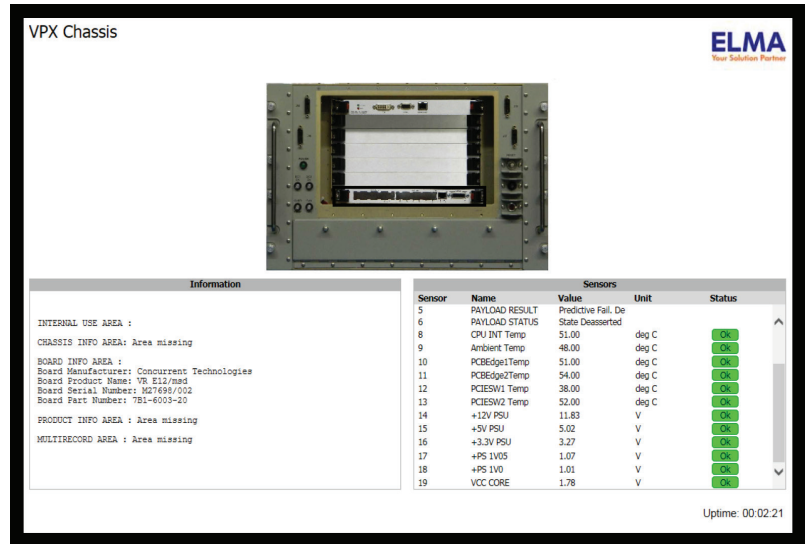
# VITA 46.11 COMPLIANT SYSTEM MANAGER

## SYSTEM SHELF MANAGER

### USER INTERFACE

The Chassis Manager hosts a Web server providing a graphical representation of the chassis (Figure 1). Complete sensor information is easily obtained with a mouse click on the image of the FRU you wish to interrogate. Parameters which can be monitored include:

- Health monitoring
- Voltages
- Fan RPM
- Power management
- Temperature
- Device ID
- Serial numbers
- Part numbers
- Software versions



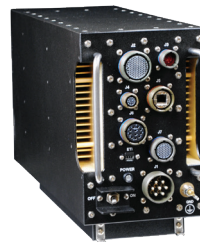
### APPLICATIONS

Elma's chassis management products can be used in a wide range of embedded computing applications including high performance defense, aerospace, high energy physics, instrumentation, manufacturing, telecommunications and others.

#### Example Order Number: SM-VP-CC-INT

Fully tested and integrated chassis manager / carrier card assembly for OpenVPX systems

### RELATED PRODUCTS



Chassis



IMPI Controller Chip

### ORDER INFORMATION

Description	Part Number
Fully tested and integrated chassis manager / carrier card assembly for VPX systems, VITA 46.11 compliant	SM-VP-CC-INT

Please contact our sales team for more details.

United States: +1 510 656 3400  
 France: +33 388 56 72 50

Germany: +49 7231 97 34 0  
 Israel: +972 3 930 50 25

Singapore: +65 6479 8552  
 Switzerland: +41 44 933 41 11

United Kingdom: +44 1234 838 822