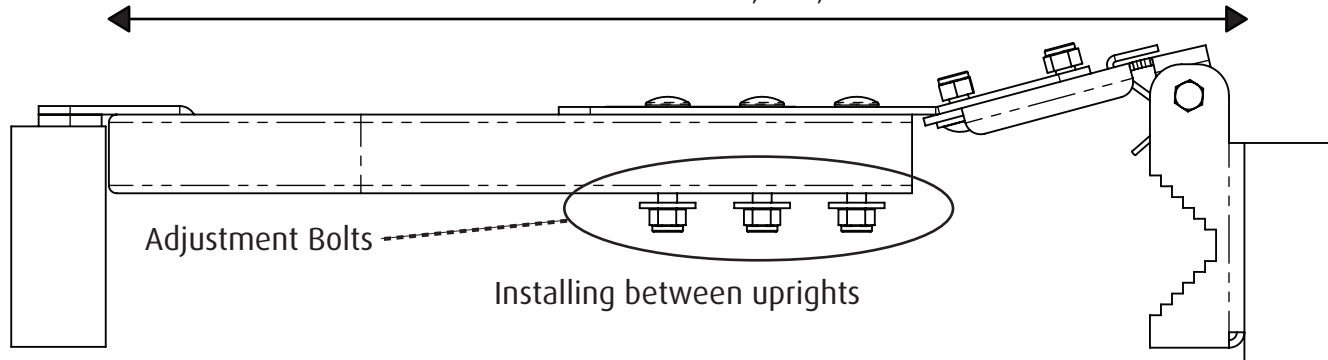


Standard sizes are 18" , 24" , 27" and 36"



GUARDIAN
FALL PROTECTION

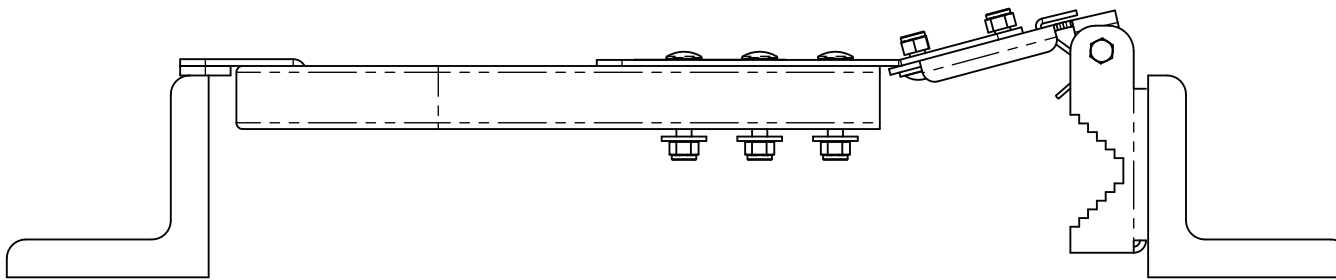
PERFORMANCE SAFETY GEAR

Guardrail Gate

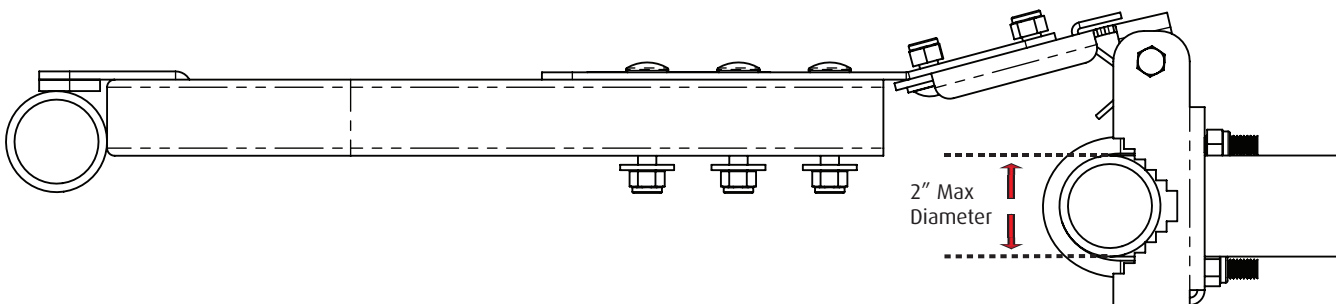
Part #:

15105	15110
15111	15112

Mounting to Angle Iron



Mounting Between Guardrail Posts



1) Attach Guardrail Gate hinges to vertical support of railing or guardrail with provided U-Bolts or other appropriate fasteners approved by Guardian. Leave Guardrail Gate hinges loose as further adjustments might be needed.

2) Line up top of Guardrail Gate as close as possible to top rail of guardrail or railing. Ideally, you want top rail to be continuous through Guardrail Gate. Ensure that Guardrail Gate always opens inward and away from fall hazard.

3) Line up hinge brackets so they are at a 90° angle to Guardrail Gate and mounting surface.

4) Adjust hoop on Guardrail Gate to appropriate width. Adjustments can be made by loosening bolts (circled in top picture) and sliding hoop to desired width. Be sure that stop plate impacts against opposite vertical column so that Guardrail Gate is secure and cannot be pushed open. Once proper adjustment is made, tighten adjustment bolts down.

5) Operate Guardrail Gate through full range of motion to insure proper installation before permanently attaching. When using U-Bolts to connect to pipe, tighten nuts down to 20 ft/lbs of torque. Verify that Guardrail Gate is tightly secured before use.