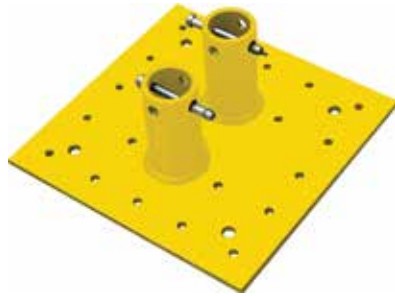


# GUARDIAN

## FALL PROTECTION



## Product Name: Screw-Down G-Rail Base

Part #: 15220

### Instruction Manual

**Do not throw away these instructions!**

**Read and understand these instructions before using equipment!**

---

Introduction . . . . .	1
Applicable Safety Standards . . . . .	1
Worker Classifications . . . . .	1
Product Specific Applications . . . . .	1
Components and Specifications . . . . .	2
Installation and Use . . . . .	2
Maintenance, Cleaning, and Storage . . . . .	3
Inspection . . . . .	3
Inspection Log . . . . .	3
Labels . . . . .	3

## Introduction

Thank you for purchasing a Guardian Fall Protection Screw-Down G-Rail Base. This manual must be read and understood in its entirety, and used as part of an employee training program as required by OSHA or any applicable state agency.

This and any other included instructions must be made available to the user of the equipment. The user must understand how to safely and effectively use the Screw-Down G-Rail Base, and all fall safety equipment used in combination with the Screw-Down G-Rail Base.

User Information	
Date of First Use:	_____
Serial #:	_____
Trainer:	_____
User:	_____

## Applicable Safety Standards

When used according to instruction specifications, this product meets or exceeds all applicable OSHA 1926 Subpart M and OSHA 1910 standards for fall protection. Applicable standards and regulations depend on the type of work being done, and also might include state-specific regulations. Consult regulatory agencies for more information on fall protection systems and associated components.

## Worker Classifications



Understand the following definitions of those who work near or who may be exposed to fall hazards.

**Qualified Person:** A person with an accredited degree or certification, and with extensive experience or sufficient professional standing, who is considered proficient in planning and reviewing the conformity of fall protection and rescue systems.

**Competent Person:** A highly trained and experienced person who is ASSIGNED BY THE EMPLOYER to be responsible for all elements of a fall safety program, including, but not limited to, its regulation, management, and implementation. A person who is proficient in identifying existing and predictable fall hazards, and who has the authority to stop work in order to eliminate hazards.

**Authorized Person:** A person who is assigned by their employer to work around or be subject to potential or existing fall hazards.

**It is the responsibility of a Qualified or Competent person to supervise the job site and ensure all applicable safety regulations are complied with.**

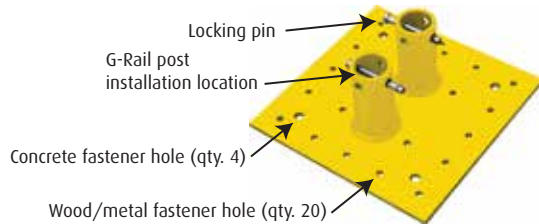
## Product Specific Applications



**Fall Prevention:** Screw-Down G-Rail Base may be used as a component in Fall Prevention applications ONLY. Fall Prevention Systems are placed around the leading edges of any and all fall hazards to prevent a worker from going over an edge, and may be used in substitute of Fall Protection or safety netting systems. Installation requirements for Screw-Down G-Rail Base set forth in this manual MUST be adhered to. Personal Fall Arrest, Work Positioning, Climbing, Rescue, and any other systems must NEVER be connected to Fall Prevention Systems.

## Components and Specifications

Materials:  
powder-coated steel.



## Installation and Use

### Prior to installation, plan your system:

Always ensure that complete G-Rail System, of which Screw-Down G-Rail Base is a component, is fully compliant with all applicable OSHA regulations. Always adhere to all instructions provided with equipment. G-Rail equipment instructions provided separately.

### Assembly and use:

#### Minimum substrate requirements:

- Wood: 5/8" CDX
- Metal: 24 gauge
- Concrete: 6", 2,500 psi.

#### Substrate fastener requirements:

- Wood: #14-10, 2" wood deck screws (qty. 20).
- Metal: #14-10, 2" metal deck screws (qty. 20).
- Concrete: 1/2" x 3" concrete bolts (qty. 4).

1. Select installation location for all Screw-Down G-Rail Bases. Ensure that spacing will facilitate installation of applicable length G-Rails.
2. Maximum substrate slope is 4/12. This supersedes the 1/12 maximum slope for the G-Rail, which applies to freestanding systems only.
3. Per substrate requirement, install all Screw-Down G-Rail Bases with all applicable fasteners. All fasteners must be fully embedded in substrate.
4. Repeat installation process for all Screw-Down G-Rail Bases, ensuring that fully installed system will prevent access to all applicable fall hazards.
5. Install G-Rail by inserting post into Screw-Down G-Rail Base and securing with locking pin.

## Maintenance, Cleaning, and Storage

If Screw-Down G-Rail Base fails inspection in any way, immediately remove it from service, and contact Guardian to inquire about its return or repair.

Cleaning after use is important for maintaining the safety and longevity of Screw-Down G-Rail Base. Remove all dirt, corrosives, and contaminants from Screw-Down G-Rail Base before and after each use. If Screw-Down G-Rail Base cannot be cleaned with plain water, use mild soap and water, then rinse and wipe dry. NEVER clean Screw-Down G-Rail Base with corrosive substances.

When not in use, store equipment where it will not be affected by heat, light, excessive moisture, chemicals, or other degrading elements.

## Inspection

Prior to EACH use, inspect Screw-Down G-Rail Base for deficiencies, including, but not limited to, corrosion, deformation, pits, burrs, rough surfaces, sharp edges, cracking, rust, paint buildup, excessive heating, alteration, and missing or illegible labels. IMMEDIATELY remove Screw-Down G-Rail Base from service if defects or damage are found. Ensure that applicable work area is free of all damage, including, but not limited to, debris, rot, rust, decay, cracking, and hazardous materials.

At least every 12 months, a Competent Person other than the user must inspect Screw-Down G-Rail Base. **Competent Person inspections MUST be recorded in inspection log in instruction manual. The Competent Person must sign their initials in the box corresponding to the month and year the inspection took place.**

During inspection, consider all applications and hazards Screw-Down G-Rail Base has been subjected to.

## Inspection Log

Date of First Use: \_\_\_\_\_.

Product lifetime is indefinite, as long as it passes pre-use and Competent Person inspections. User must inspect prior to EACH use. Competent Person other than user must complete formal inspection at least every 12 months. Competent Person to inspect and initial.

	J	F	M	A	M	J	J	A	S	O	N	D
YR												
YR												
YR												
YR												
YR												

This inspection log must be specific to one Screw-Down G-Rail Base. Separate inspection logs must be used for each Screw-Down G-Rail Base. All inspection records must be made visible and available to all users at all times.

If equipment fails inspection IMMEDIATELY REMOVE FROM SERVICE.

## Labels

**GUARDIAN**  
FALL PROTECTION

**Screw-Down  
G-Rail Base**

**Part #: 15220**

**DOM:**

**Serial #:**

90923 (Rev. A)