

# WEB HORIZONTAL LIFELINE

Part # 14663; 14665



## Instruction Manual



### Contents

|    |                              |
|----|------------------------------|
|    | Declarations of Conformity   |
| 4  | Product Applications         |
| 4  | Applicable Safety Standards  |
| 5  | Installation and Use         |
| 7  | Safety Information           |
| 8  | Labels                       |
| 9  |                              |
|    | Inspection                   |
|    | Inspection Log               |
| 12 | Specifications and Materials |

### Risk Statement

The device is designed to protect against falls from height and reduce peak forces generated during a fall below 6kN, when used in accordance with this manual.

- ✗ Do not throw instructions away.
- ⚠ Read and understand instructions before using this equipment.

## EU Declaration of Conformity

The manufacturer:

**Checkmate Lifting & Safety Limited t/a Pure Safety Group**

New Road, Sheerness,  
Kent, ME12 1PZ,  
United Kingdom

declares under its sole responsibility that the range of PPE described hereafter:

**HLL-W Webbing Temporary Horizontal Lifeline**

14663 (20m)

14665 (10m)

is in conformity with the provisions of Regulation (EU) 2016/425 and with the European harmonised standard(s) EN795:2012 Type B, and in addition to European standard EN795:2012 Type C & Technical Specification no. PD CEN TS 16415:2013 Type B & C (2 users), and RfU 11.096 (limited products), and is identical to the PPE which is the subject of EU Type Examination (Module B) under certificate number 20/2467/00/0161 issued by:

Issued by:

**Asociación de Investigación de la Industria Textil (AITEX) (0161)**

Plaça Emilio Sala, 1,  
03801 Alcoy (Alicante),  
España

and is subject to the conformity assessment procedure to type (Module D) of the Regulation under surveillance of Notified Body:

**SGS Fimko Oy (0598),**

P.O. Box 30 (Särkiniementie 3),  
00211 HELSINKI,  
Finland

Signed for and on behalf of: Checkmate Lifting & Safety Limited.

Name: Peter Upcott

Place: Sheerness, Kent

Position: Interim Compliance Manager

Date: 07 December 2022

Signature: 

## UK Declaration of Conformity

The manufacturer:

**Checkmate Lifting & Safety Limited t/a Pure Safety Group**

New Road, Sheerness,  
Kent, ME12 1PZ,  
United Kingdom

declares under its sole responsibility that the range of PPE described hereafter:

**HLL-W Webbing Temporary Horizontal Lifeline**

14663 (20m)

14665 (10m)

is in conformity with the provisions of Regulation 2016/425 on personal protective equipment as brought into UK law as amended and with the UK designated standard(s) EN795:2012 Type B, and EN795:2012 Type C & Technical Specification no. PD CEN TS 16415:2013 Type B & C (2 users), and RfU 11.096 (limited products), and is identical to the PPE which is the subject of EU Type Examination (Module B) under certificate number 20/2467/00/0161 issued by:

Issued by:

**Asociación de Investigación de la Industria Textil (AITEX) (0161)**

Plaça Emilio Sala, 1,  
03801 Alcoy (Alicante),  
España

and is subject to the conformity assessment procedure to type (Module D) of the Regulation under surveillance of Notified Body:

**SGS Fimko Oy (0598),**

P.O. Box 30 (Särkiniementie 3),  
00211 HELSINKI,  
Finland

Signed for and on behalf of: Checkmate Lifting & Safety Limited.

Name: Peter Upcott

Place: Sheerness, Kent

Position: Interim Compliance Manager

Date: 07 December 2022

Signature:



## Product Specific Applications



May be used to support a **MAXIMUM 2 Personal Fall Arrest System (PFAS)** for use in Fall Arrest applications. Maximum free fall is 1.8m, or up to 3.6 m if used in combination with equipment explicitly certified for such use. When the Web HLL is to be used as part of a fall arrest system the user must be equipped with a means of limiting the maximum dynamic forces exerted on the user during the arrest of a fall to a maximum of 6 kN. During a fall, the Web HLL will deploy an extending energy absorber designed to reduce peak loads to anchorage structures, thereby increasing the length of the anchorage line. Extra care and consideration should be taken when determining the suitability of other types of fall protection systems which may be affected by the deployment of the integrated lifeline energy absorber.

### D-ring: Dorsal



May be used in **Restraint** applications. Restraint systems prevent a worker from reaching the leading edge of a fall hazard. Always account for fully deployed length of lanyard/SRL. No free fall is permitted. Restraint systems may only be used on surfaces with slopes up to 4/12 (vertical/horizontal).

### D-rings: Dorsal, Side

---

## Competent Person Definition

*The job site safety supervisor, referred to in this manual as the Competent Person (CP), must be a highly trained and experienced person who is assigned by the employer to be responsible for all elements of the fall safety program; this includes, but is not limited to, program regulation, management, and application. The CP must be proficient in identifying existing and predictable fall hazards, and must have the authority to stop work to eliminate hazards or otherwise promote safe and compliant work practices.*

---

## For All Product Applications

- **User weight range (including all clothing, tools, and equipment) is 59-140kg.**
- **Structure must be capable of withstanding a minimum load of 20 kN (1 user) or 22 kN (2 users).**
- **Anchorage connectors to which Web HLL is attached must be capable of withstanding a minimum load of 19.4 kN.**
- **Maximum load that could be transmitted in service from the anchorage connector to the structure: 13.4 kN.**
- **Loading of the structure will be in-line/parallel with the Web HLL lifeline.**

The jobsite Competent Person (CP) must ensure that there are sufficiently strong and accessible anchorage points in the working environment. Anchorages should be overhead when possible and the area beneath and around them should be clear of obstruction and sharp edges. Always attach to an anchorage that is as close to the point of work and as high above head as possible without restricting free movement. The user should be aware at all times of which attachment points to use; if not immediate obvious they must seek confirmation from the CP. Always ensure that the means of attachment to the anchorage is secure before beginning work.

---

## Applicable Safety Standards

Meets or exceeds:

- **EN795:2012 Type B & C**
  - **CEN/TS 16415:2013 Types B&C - 2 users**
  - **RfU 11.062**
-

## Installation and Use

**⚠ WARNING!** For use in personal fall protection systems only. NEVER use for material handling and/or lifting.

**⚠** Do not install at any angle other than horizontal.

**⚠** Do not use in combination with pass-through anchors.

**⚠** Do not use for Fall Arrest and Fall Restraint simultaneously.

**⚠** When using for Fall Arrest, user must be equipped with means of limiting the the maximum dynamic forces exerted onto each user during a fall to a maximum of 6 kN.

Ensure all PFAS equipment is selected and deemed compatible by a Competent Person.

Determine desired location for Web HLL; ensure location is free of debris, rot, decay, cracking, and hazardous materials. Eliminate or minimize all risk of swing fall.

If using an SRL to connect to WEB HLL, only Guardian ATOM and FAB3W SRLs up to 3m can be connected.

---

**⚠ WARNING!** Do not use retractable type fall arresters (SRLs) or guided type fall arresters, including a flexible anchor line, that have not been listed above with this horizontal lifeline. Equipment which has not been tested for compatibility with this horizontal lifeline may not function correctly, potentially resulting in serious injury/death.

---

### ■ Step 1

Determine intended system length (maximum 20m) and anchor point installation locations. Anchor points must be directly across from each other, so that Web HLL will be completely level and not slope in any way when installed.

### ■ Step 2

Install Cross Arm Straps around compatible structural anchor points, as determined by a Competent Person.

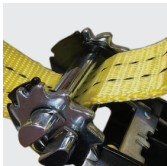
**Note:** it is also permitted to connect Web HLL to anchorage connectors other than Cross Arm Straps, provided applicable anchorage connectors are deemed compatible with Web HLL by Competent Person.

### ■ Step 3

Slide O-rings onto webbing before attaching Ratchet Assembly.

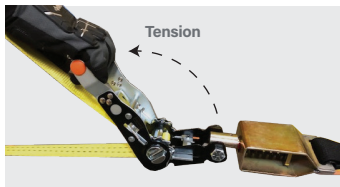
### Step 4

Thread free end of Web Assembly through slotted drum as shown. Attach Ratchet assembly to one anchor point and Web Assembly to another anchor point. Pre-tension system by pulling webbing through drum until taut and slack is eliminated. Failure to take up excess slack may result in webbing damage and prevent ratchet from locking properly.



### Step 5

Tension Web HLL to final position with ratchet. Pull towards web to tighten, push back toward shock absorber, and repeat. Hold rubber grip of ratchet only. DO NOT grip ratchet release lever, which is only used during removal.



### Step 6

Web HLL is properly tensioned when green tension indicator is visible next to green arrow on label. DO NOT USE if either red indicator aligns with green arrow on label. ALWAYS inspect tension indicator before, and during, each use to ensure tension is maintained.



### Step 7

Remove ratchet handle by fully pulling up on release lever and lifting away from Ratchet Assembly. DO NOT pull back on handle, as this may accidentally release tension on Web HLL.



### Step 8

Attach complete and compatible PFAS to HLL O-ring. Maximum 1 connection per O-ring. Connections include attachment via snap hook, scaffold hook, and karabiner.

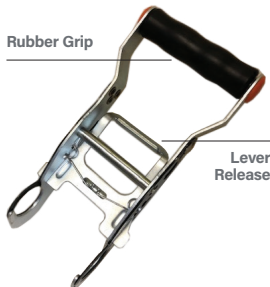
### Step 9

To uninstall, first reattach ratchet handle. Then, pull up partially on ratchet release lever until bottom of release no longer rests in ratchet channel. Then, pull down fully on handle until tension is released.

## Tensioner Ratchet Handle

Rubber Grip

Lever Release



## Safety Information

**⚠ WARNING!** Failure to understand and comply with safety regulations may result in serious injury or death. Regulations included herein are not all-inclusive, are for reference only, and are not intended to replace a Competent Person's judgment or knowledge of federal or state standards.

**⚠ CAUTION!** Understand the definitions of those who work near, or who may be exposed to, fall hazards.

**⚠ WARNING!** Use of equipment in unintended applications may result in serious injury or death. Maximum 1 attachment per O-ring connection point.

Do not alter or misuse equipment.

Workplace conditions, including, but not limited to, corrosive chemicals, electrical shock, sharp objects or edges, machinery, flame/high heat, abrasive or uneven surfaces, UV exposure, and severe or prolonged weather conditions, must be assessed by a Competent Person (CP) before fall protection equipment is selected. The presence of any/all of these conditions may have negative effects on product performance or service lifetime.

The analysis of the workplace must anticipate where workers will be performing their duties, the routes they will take to reach their work, and the potential and existing fall hazards they may be exposed to. Fall protection equipment must be chosen by a CP. Selections must account for all potential hazardous workplace conditions. All fall protection equipment should be purchased new and in an unused condition.

Fall protection systems must be designed and used in compliance with all safety regulations and must be selected and installed under the supervision of a CP. Forces applied to anchors must be calculated by a CP.

Harnesses and connectors selected must be compliant with manufacturer's instructions, and must be of compatible size and configuration. Snap hooks, karabiners, and other connectors must be selected and applied in a compatible fashion. All risk of disengagement must be eliminated. All snap hooks and karabiners must be self-locking and self-closing, and must never be connected to each other.

### See Diagram B on page 9

A pre-planned rescue procedure in the case of a fall is required. The rescue plan must be project-specific. The rescue plan must allow for employees to rescue themselves, or provide an alternative means for their prompt rescue to minimise post fall suspension time. Store rescue equipment in an easily accessible and clearly marked area.

Training of Authorised Persons (APs) to correctly erect, disassemble, inspect, maintain, store, and use equipment must be provided by a CP. Training must include the ability to recognise fall hazards, minimise the likelihood of fall hazards, and the correct use of personal fall arrest systems.

NEVER use fall protection equipment of any kind to hang, lift, support, or hoist tools or equipment, unless explicitly certified for such use.

Equipment subjected to forces of fall arrest must immediately be removed from use.

Age, fitness, and health conditions can seriously affect the worker should a fall occur. Consult a doctor if there is any reason to doubt a user's ability to safely withstand fall arrest forces or perform set-up of equipment. Pregnant women and minors MUST NOT use this equipment.

Physical harm may still occur even if fall safety equipment functions correctly. Sustained post-fall suspension may result in serious injury or death. Use trauma relief straps to reduce the effects of suspension trauma.

## Labels



**1**

Guardian  
HLL WEB Horizontal LifeLine  
Meets and exceeds requirements of  
EN 795:2012 Types B & C  
PD CEN/TS 16415:2013 Types B & C - 2 Users  
RFU 11.096

## Engraved on Tensioner Housing:

SERIAL NUMBER:  
D.O.M:  
MAX NO. OF USERS:  
MAX USER WEIGHT:  
PART NUMBER:  
SYSTEM LENGTH:

Structure must withstand minimum force of 20 kN for one user, 22 kN for two users.

Anchorage connectors must withstand minimum force of 19.4 kN.

Always avoid all hazards, including, but not limited to, chemicals, corrosive substances, excessive heat, electric shock, and sharp and abrasive edges and surfaces. Product lifetime is indefinite, as long as product passes all inspection requirements. User must inspect prior to EACH use. Competent Person must complete formal inspection every 12 months. Competent Person to inspect and initial.

**2** If equipment fails inspection **IMMEDIATELY REMOVE FROM SERVICE.**

**Materials:** Polyester, galvanised steel, and zinc-plated steel.

**DO NOT REMOVE LABELS**

CE 0598 UKCA

Assembled in UK by by Checkmate Lifting & Safety Ltd T/A Guardian Fall, New Road, Sheerness, Kent, ME12 1PZ United Kingdom

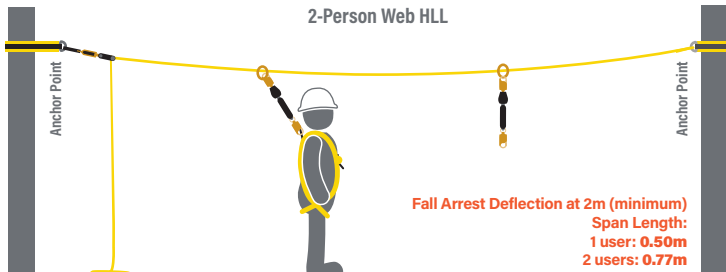
 **TENSION INDICATOR**



## Diagram A - Fall Clearance

Fall clearance calculation shown below is an example ONLY.

### 2-Person Web HLL



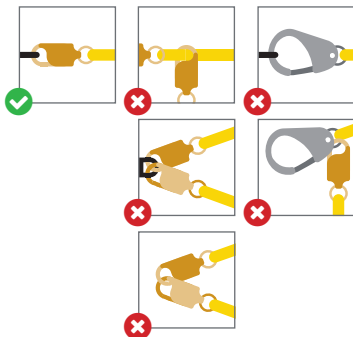
### Fall Arrest Deflection at 20m (maximum)

Span Length:  
 1 user: **2.35m**  
 2 users: **3.33m**

**Note:** In restraint applications, deflection is approximately 2% of the span length when tensioned correctly.

- Lifeline Deflection
- Free Fall
- Maximum Arrest Distance
- Harness Stretch
- Safety Factor
- Swing Fall

## Diagram B - Connections



**⚠ WARNING! Eliminate Swing Fall whenever possible!** If swing fall exists, always account for additional fall clearance. Example above shows deployment distance for EN355 rated shock absorbing lanyard.

## Inspection

### See Inspection Log on page 11

Prior to EACH use, inspect the Web HLL, lifeline, and connection points for signs of deficiencies, including, but not limited to, corrosion, deformation, pits, burrs, rough surfaces, sharp edges, cracking, rust, paint buildup, excessive heating, alteration, broken stitching, fraying, and missing or illegible labels. Careful inspection should be made at location where ratchet contacts web lifeline; excessive turns of ratchet drum may accelerate webbing wear. If webbing shows signs of wear, please replace only with Guardian-supplied webbing.

**IMMEDIATELY** remove Web HLL from service if defects or damage are found, or if exposed to forces of fall arrest.

If inspection shows distance between edge of black webbing on shock-pack is greater than 5 cm, the product has been exposed to excessive force and must not be used. See image below

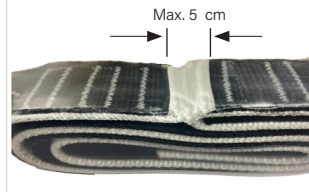
Any visual evidence of deployment is a primary indicator of excessive load - **IMMEDIATELY** remove Web HLL from service.

Ensure that applicable work area is free of all damage, including, but not limited to, debris, rot, rust, decay, cracking, and hazardous materials. Ensure that selected work area will support the application-specific minimum loads set forth in this instruction manual. Work area **MUST** be stable.

CP other than user must complete thorough inspection at least every 12 months or every 3 months if used in offshore or corrosive environments. In addition local regulations in regard to inspection must be followed. CP to inspect and initial. This inspection log must be specific to one Web HLL. Separate inspection logs must be used for each Web HLL. All inspection records must be made visible and available to all users at all times. If equipment fails thorough inspection it must be immediately from service and discarded or repaired.

During inspection, consider all applications and hazards the Web HLL has been subjected to. Ensure that device certification is current before use, this device must only be repaired by a Competent Person authorised by the manufacturer.

### Shock Pack Inspection





## Specifications

### Web Horizontal Lifeline

| Part # | Length | Contents*  |
|--------|--------|--|
| 14663  | 20m    | O-rings (2), Cross Arm Straps (2), Karabiners (2), Tensioner, Tether, Carrying Bag |
| 14665  | 10m    | O-rings (2), Cross Arm Straps (2), Karabiners (2), Tensioner, Tether, Carrying Bag |



## Materials

Polyester, galvanised steel,  
and zinc-plated steel.

### IMPORTANT!

**\*Web HLL is also provided with Bungee Tether, part #: BNGEXT1C10XT-R.**

Dropped object prevention is an essential component of any jobsite safety plan.

Always adhere to all provided Bungee Tether instructions.

**Bungee Tether is intended to be used in combination with removable ratchet handle to eliminate accidental drops or misplacement.**









Checkmate Lifting & Safety t/a Guardian Fall  
New Road, Sheerness,  
Kent, ME12 1PZ  
United Kingdom

+44 (0) 1795 580 333  
[enquiries@guardianfall.com](mailto:enquiries@guardianfall.com)

**[guardianfall.com](http://guardianfall.com)**