



U.S. Boiler Company

Burnham[®] **RSA[™]**

Oil Fired, Chimney Vented, Steel Water Boiler

- 86% AFUE
- Steel heat exchanger, vertical firetube design
- Two sizes, 0.75 & 1.10 GPH
- Advanced base and shell design provides high level of heat transfer
- Turbulators provide maximum heat extraction and are removable for easy cleaning
- Simple quick release canopy on the top of the boiler provides easy access for servicing
- Tankless coil available, flange-mounted on front of boiler for easy access
- Lifetime limited warranty
- Available in select markets

Intelligent Controls Simplify Installation and Operation

Primary Ignition Controls

- Advanced status indicators and diagnostics
– Beckett GeniSys[™]

HydroStat[®] 3250 Three Function Hydronic Control

- Easy temperature control
- Low water cut off – selectable auto or manual reset
- Fuel savings with thermal targeting or traditional outdoor reset capability
- Thermal pre-purge circulation uses latent heat before starting new heat cycle
- Easy settings and monitoring
- Primary circulator control function
- LED active status indicators assist contractors and consumers
– High temperature, LWCO, economy operation
- Dynamic digital display
– Displays boiler supply temperature and outdoor temperature (if ODR installed)
– Automatically displays set points during adjustments

RSA: Technical Information



Standard Equipment

- ASME code boiler
- Deluxe insulated jacket
- Pressure/temperature gauge
- ASME code boiler
- Lightweight combustion chamber
- Beckett AFG™ oil burner with flange
- Beckett Genisys™ oil burner control
- Hydrostat® 3250 hydronic control
- Taco® circulator
- Quick release canopy
- Relief valve, 30 PSI

RSA Ratings

Model No.	Burner Capacity		DOE Heating Capacity (MBH) ²	AHRI Net Ratings (MBH) ³	AFUE %
	GPH	MBH ¹			
RSAH111E	0.75	110	95	84	86.2
RSAH154E	1.10	154	134	117	86.0

Maximum design working pressure: 30 psi water only

1. MBH refers to thousands of BTUs per hour

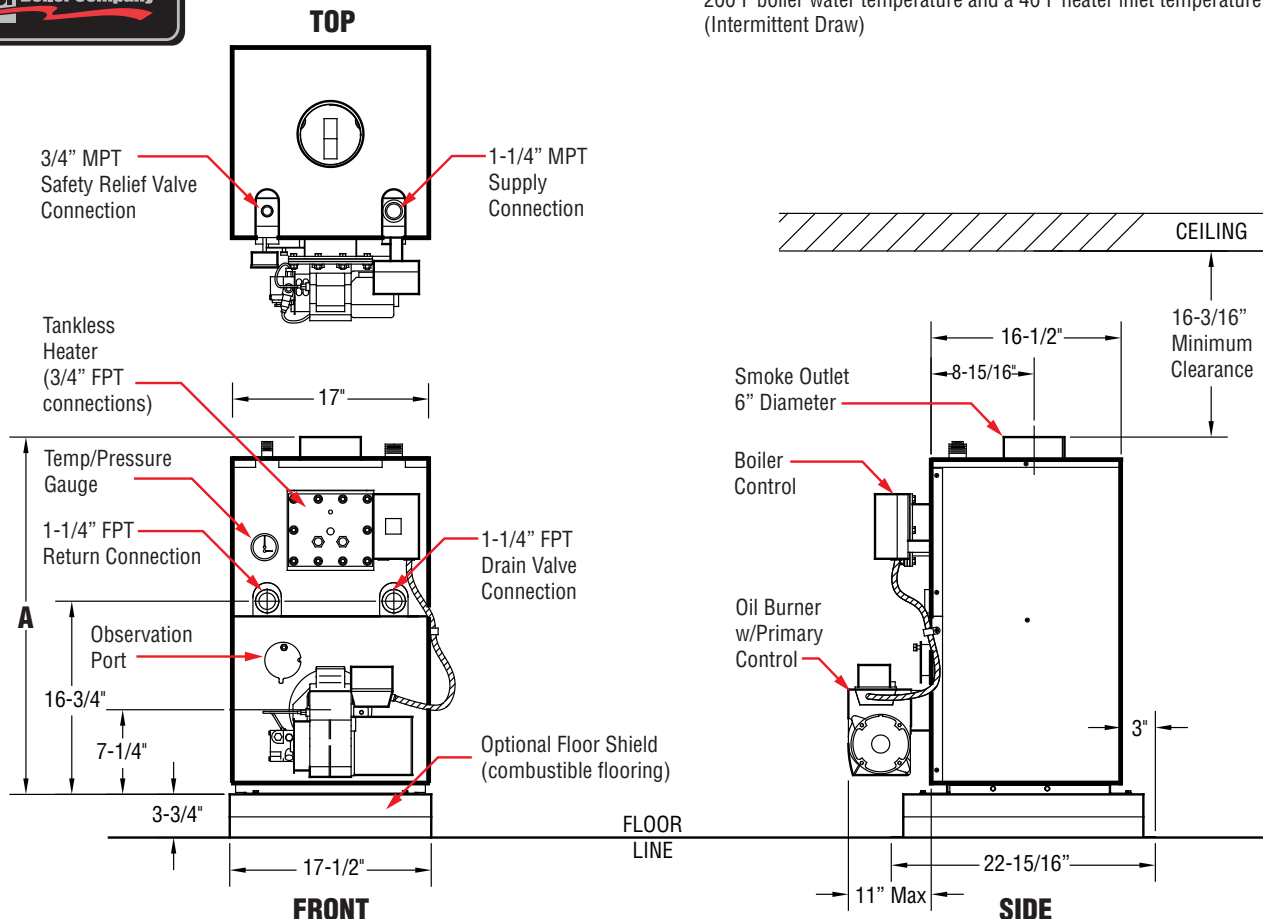
2. Based on Standard Test prescribed by the United States Department of Energy at combustion conditions of 13.0% CO₂

3. Net AHRI ratings shown are based on a piping and pickup allowance of 1.15

Dimensions & Specifications

Model	A (In.)	Flue Collar (In.)	Tankless Heater GPM*	Minimum Chimney Requirements			Approx. Shipping Weight (lbs.)
				Round Diameter (in.)	Rectangle (in. x in.)	Height (ft.)	
RSAH111E	34-9/16	6	3	6	8 x 8	15	300
RSAH154E	41	6	3-1/2	6	8 x 8	15	355

* Tankless heater ratings based on GAL/MIN of 100°F rise and with 200°F boiler water temperature and a 40°F heater inlet temperature (Intermittent Draw)



NOTES:

1. Circulator supplied loose – may be installed on supply (recommended) or return (acceptable alternative) piping
2. Return fittings and drain valve shipped loose