



# Burnham® V1 RO/FO™

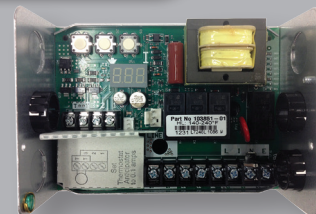
## Oil Fired, Chimney Vented, Cast Iron Water Boiler



- 84% AFUE
- Cast iron sectional heat exchanger
- Equipped with Intelligent Oil Boiler Control System™
- Available in 0.75 GPH
- Front or rear flue outlet provides installation flexibility and ability to install in tight spaces
- Natural draft
- Compact design with small footprint
- Tankless coil included
- Lifetime limited warranty
- Available in select markets

### Intelligent Oil Boiler Control

- Combines aquastat, relay, and ignition functions into a single module
- Two customizable integrated switching relays for easy addition of additional heating zone or indirect water heater
- Energy saving “thermal purge”, which works by circulating residual warm water (140° or above) in the heating system before firing the boiler
- LED display for boiler status and trouble codes
- Extensively tested and proven in thousands of existing installations



**Burnham®**  
by  
**U.S. Boiler Company**



# V1 RO/FO: Technical Information



## Standard Equipment

- ASME code boiler
- Deluxe insulated jacket
- Pressure/temperature gauge
- Combustion chamber blanket
- Tankless coil
- Front or rear outlet
- Removable right side flue plates
- Beckett AFG oil burner
- Beckett Genisys oil burner control
- Intelligent Oil Boiler Control System
- Taco 007 circulator
- Boiler drain valve
- Relief valve, 30 PSI

## V1 RO/FO Ratings & Specifications

Model	AFUE %	Burner Capacity (GPH) <sup>1</sup>	DOE Heating Capacity MBH <sup>2</sup>	Net AHRI (MBH) <sup>2</sup>	Tankless Heater GPM <sup>3</sup>	Water Content Gallons (Boiler Only)	Approx. Ship Weight (lbs.)
V-13A RO/FO	84	0.75	89	77	3.25	13.5	519

Maximum design working pressure: 30 psi water only

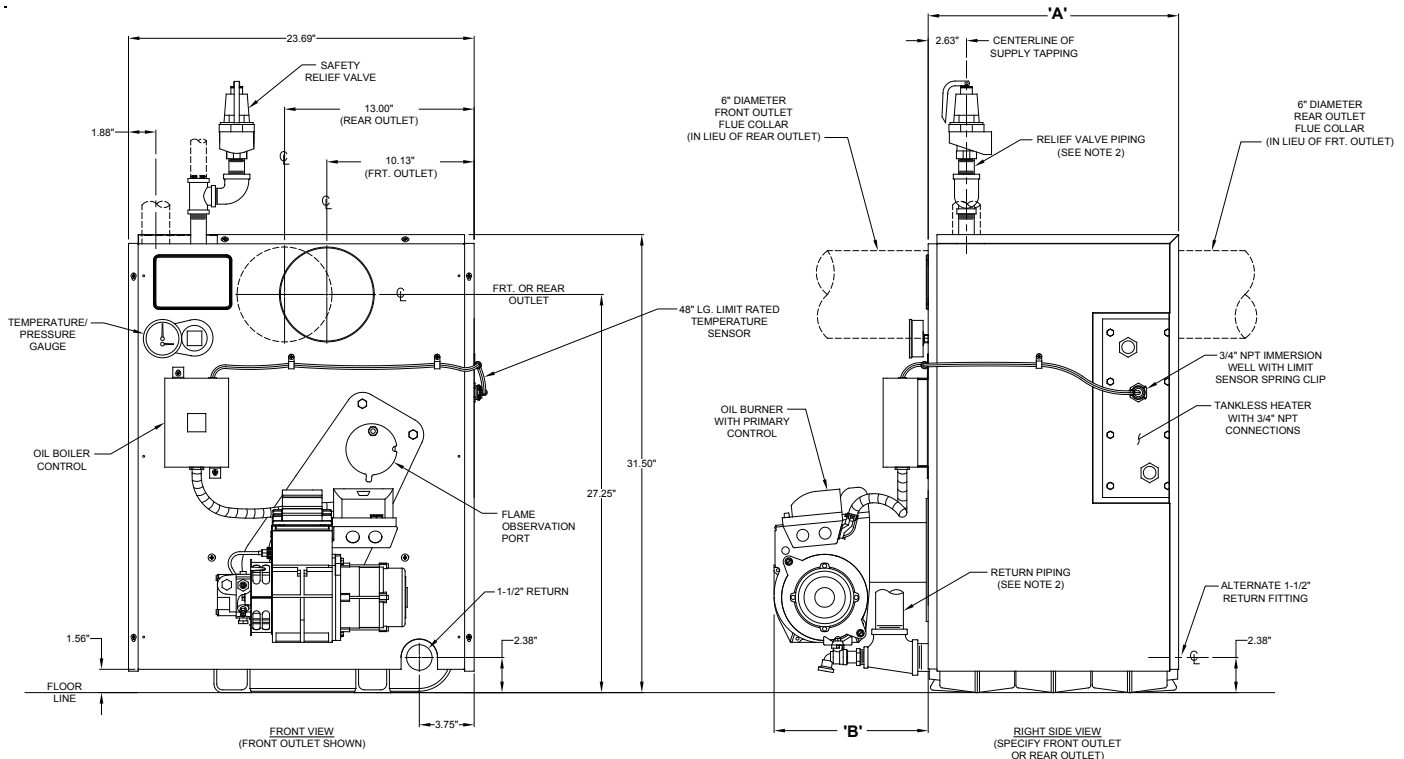
1. Firing rate in GPH based on oil having a heat value of 140,000 BTU/GAL.

2. Net ratings shown are based on piping and pick-up allowance of 1.15.

3. Tankless heater ratings based on GAL/MIN of 100°F rise and with 200°F boiler water temperature and a 40°F heater inlet temperature. (Intermittent Draw)

## Dimensions (Inches)

Model	A	B	Minimum Chimney Size (In x In x Ft)	Flue Collar Diameter
V-13A RO/FO	15-7/8	11.5	8 x 8 x 15	6



- NOTES:
1. PIPING SHOWN IN HIDDEN LINES NOT SUPPLIED BY MANUFACTURER.
  2. DRAIN VALVE, RELIEF VALVE, CIRCULATOR, RELATED HARDWARE, AND PIPING FITTINGS SHIPPED LOOSE.