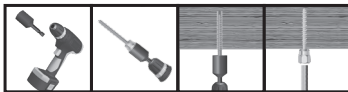


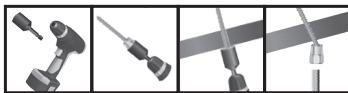
SAMMYS WOOD AND STEEL INSTALLATION

1. Install appropriate Sammys Nut Driver (see label on Sammys Anchor box) in a 3/8" or 1/2" portable drill and insert the anchor into the nut driver.
2. Position drill perpendicular to the structural member and begin drilling (DO NOT USE IMPACT OR HAMMER MODE).
3. When the nut driver spins freely on the cap of the screw, stop drilling and remove. Installation is now complete.
For DSTR, SWDR and SH-DSTR models add retainer nut and hand tighten (torque to 20 in-lbs max).

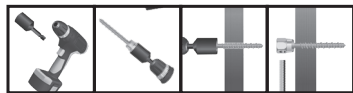
VERTICAL INSTALLATION



SWIVEL INSTALLATION



HORIZONTAL INSTALLATION



SUGGESTED INSTALLATION SPEED (RPM)

DSTR 516, DST 516, TEK 50, DSTR 1-1/2", SWDR 1-1/2", SWDR 516, SH-TEK 50	0-1800
All other SAMMYS for Steel	0-2500
SAMMYS for Wood	0-1200

For a full list of approvals, visit www.sammysanchors.com

SAMMYS CONCRETE INSTALLATION

1. Using included 1/4" diameter carbide tip drill bit, predrill the concrete to a depth of 2", with a hammer drill or rotary hammer set on hammer mode. For faster concrete installation, see available concrete installation kit (8122910).
2. Install appropriate Sammys Nut Driver (see label on Sammys Anchor box) in a 3/8" or 1/2" portable drill and insert the anchor into the nut driver.
3. Position drill perpendicular to the concrete and begin drilling (DO NOT USE IMPACT OR HAMMER MODE).
4. When the nut driver spins freely on the cap of the screw, stop drilling, and remove. Installation is now complete.

VERTICAL INSTALLATION



SWIVEL INSTALLATION



SUGGESTED INSTALLATION SPEED (RPM)	
SAMMYS for Concrete	0-1200

HORIZONTAL INSTALLATION



For a full list of approvals, visit www.sammysanchors.com

SAMMY X-PRESS INSTALLATION

A. METAL DECK & PURLIN

1. Insert the bit receiver with 25/64" drill bit (p/n 8152910) into the chuck of a minimum 18-volt battery operated drill.
2. Drill the 25/64" hole through the metal deck or purlin at the desired location.
3. Slide the yellow sleeve of the X-Press It 2.0 Tool over the drill bit until it connects to the receiver.
4. With the internally-threaded portion of the anchor (XP 200, XP 20, XP 35, SWXP 35, SXP 20, SXP 35, SXP 2.0, SXP 3.5) positioned inside the socket of the installation tool, secure the square base of the Sammy X-Press within the square recessed guidelines of the installation tool.
5. Fully insert the Sammy X-Press anchor through the pre-drilled hole.
6. While keeping the top of the tool flush with the metal deck or purlin, firmly hold the yellow sleeve of the X-Press-It 2.0 Tool, before pulling the trigger to install the Sammy X-Press anchor. The expandable portion of the anchor will compress and secure the anchor to the metal deck or purlin. Be sure to properly position hand to avoid injury (see installation images).

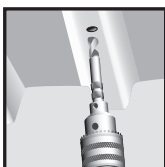
B. STRUCTURAL CONCRETE OVER METAL DECK

(Follow steps 1-6 before pouring concrete)

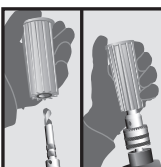
C. NON-STRUCTURAL LIGHTWEIGHT CONCRETE APPLIED OVER METAL DECK, NOT FOR USE WITH AIR DRY DENSITY GREATER THAN 35 PCF

(Follow steps 1-6 after the LWC has been applied)

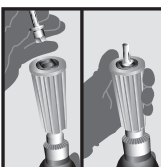
*Pre-Drill
Hole*



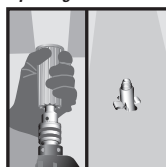
*Attach
XPRESS It™ 2.0 Sleeve*



*Insert and Lock In
X-PRESS Anchor*



*Install by
Expanding Anchor*



For a full list of approvals, visit www.sammysanchors.com

Sammys®, Sammy X-Press®, Sammy Swivel Head™, and Sidewinders™, are trademarks of ITW Buildex and Illinois Tool Works, Inc.
© 2023 ITW Buildex and Illinois Tool Works, Inc.

SSS30-Rev 8-23

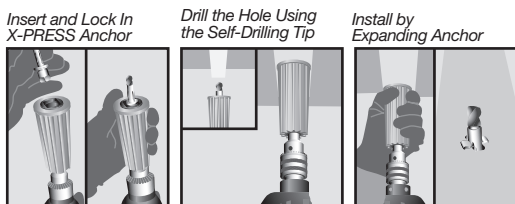
SAMMY X-PRESS DRILL/DRIVE INSTALLATION

A. METAL DECK & PURLIN

1. Insert the X-Press It 2.0 tool into the chuck of a minimum 18-volt battery operated drill. Please note, you will not be required to use the tool's internal drill bit when installing XPDD anchors.
2. With the internally-threaded portion of the anchor (XPDD 40) positioned inside the socket of the installation tool, secure the square base of the XPDD anchor within the square recessed guidelines of the installation tool.
3. Apply pressure to the drill-point of the XPDD anchor against the metal deck or purlin. **Without** holding onto the yellow handle, begin drilling into the metal deck or purlin until a hole is formed, allowing the anchor to completely pass through.
4. While keeping the top of the tool flush with the metal deck or purlin, **firmly hold** the yellow sleeve of the X-Press-It 2.0 Tool, before pulling the trigger to install the Sammy X-Press Drill/Drive anchor. The expandable portion of the anchor will compress and secure the anchor to the metal deck or purlin. Be sure to properly position hand to avoid injury (see installation photos).

B. STRUCTURAL CONCRETE OVER METAL DECK

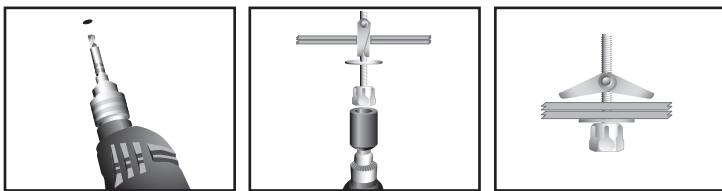
(Follow steps 1-4 before pouring concrete)



SAMMY X-PRESS DRILL/DRIVE UL APPROVAL FOR PIPE HANGER						
Part Number	Model	Rod Size (in.)	Mount Direction	UL Test Load (lbf)	Min. Steel Thickness (ga.)	UL Max. Pipe Size (in.)
8151957	XPDD 40	3/8	Vertical	850	22	2 1/2
				1500	16	4
SAMMY X-PRESS DRILL/DRIVE UL APPROVAL FOR LUMINAIRE FITTING						
Part Number	Model	Rod Size (in.)	Mount Direction	UL Load Rating (lbf)	Min. Steel Thickness (ga.)	
8151957	XPDD 40	3/8	Vertical	185	22	
				250	20	
SAMMY X-PRESS DRILL/DRIVE UL APPROVAL FOR CONDUIT, TUBING, AND CABLE						
Part Number	Model	Rod Size (in.)	Mount Direction	UL Load Rating (lbf)	Min. Steel Thickness (ga.)	Listed Applications
8151957	XPDD 40	3/8	Vertical	283	22	Max 4 trade size EMT, RMC, and IMC & 5 trade size rigid PVC conduit
8151957	XPDD 40	3/8	Vertical	500	16	Max 4 trade size EMT & 6 trade size RMC, IMC, and rigid PVC conduit

SAMMYS TOGGLE INSTALLATION

1. Pre-drill a 5/8" hole with a regular drill or hole saw.
2. Insert the set screw (SST 30) into the #14 black nut driver. With wing nut and washer on bolt, insert wing nut all the way through surface, and begin installation.
3. When bolt is secure and the nut driver spins freely on the cap, stop drilling and remove.

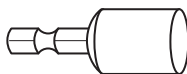


For a full list of approvals, visit www.sammysanchors.com

SAMMYS NUT DRIVERS

NOTE: Sammys nut drivers have a unique spin off feature which provides a fast and safe installation each time. When the face of the driver comes into contact with the material you are installing into, continue drilling until the nut driver spins free. Installation is then complete. Warranty is void if other tools (or modified nut drivers) are used for installation.

Eye protection should be worn at all times when installing this product.



WARRANTY • DISCLAIMER OF WARRANTY

LIMITED WARRANTY: Proper fastener connection design takes into account where and how fasteners are used. Allowance for special characteristics in materials, differences in materials, differences in types of materials being joined, unique or unusual environmental service or installation conditions and the safety factors required by anticipating normal or short-term loading conditions must be considered. Due to possible differences in specifications, applications, and interpretation of results, purchasers and specifiers must make their own evaluation of the products, to determine the suitability of these products for intended use.

Buildex will repair or replace any product which, within twelve months after sale by Buildex or its distributors under normal use and given proper installation and maintenance, is found by Buildex to be defective in material or workmanship - normal wear and tear accepted. This is the sole warranty of ITW Buildex and the sole remedy available to distributor or buyer. EXCEPT AS SET FORTH ABOVE, BUILDDEX MAKES NO WARRANTY OR REPRESENTATION OF ANY KIND, EXPRESS OR IMPLIED (INCLUDING NO WARRANTY OF MERCHANTABILITY OR FITNESS FOR ANY PARTICULAR PURPOSE, WITH RESPECT TO ITS PRODUCTS.

Buildex shall not be liable for any injury, loss or damage, direct, indirect, or consequential, arising out of the use of, or the inability to use, any Buildex product.