

# PRODUCT INFO

## Smart Farm Manual

※ For proper assembly, please read the instructions first before proceeding with the assembly.

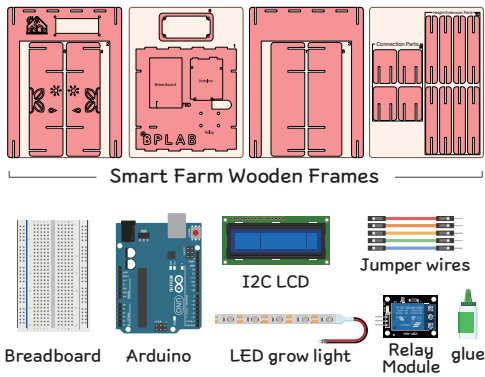


10 bolts



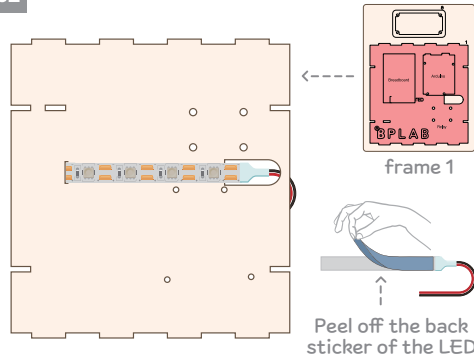
10 nuts

01



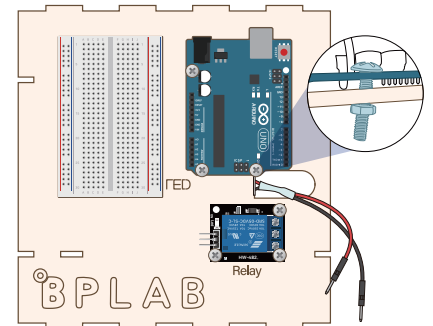
Prepare the smart farm frames and the sensor modules.

02



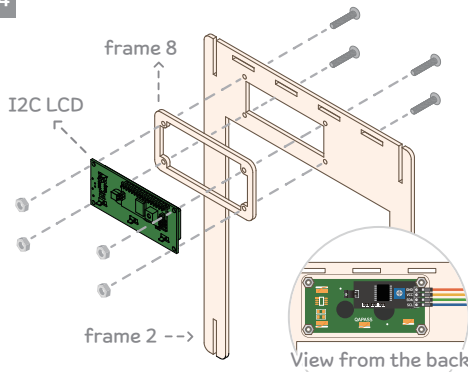
Peel off the sticker of the LED grow light and attach it to the back of Frame 1.

03



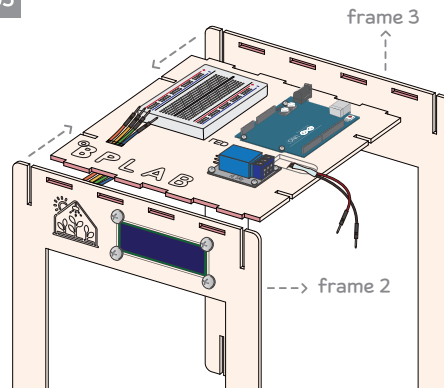
Attach the breadboard to the front of Frame 1, and secure the Arduino and relay module with bolts and nuts.

04



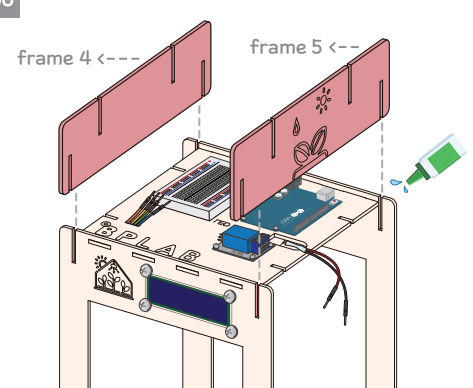
Insert jumper wires into the I2C LCD, then assemble by attaching bolts in the order of **LCD→Frame 8→Frame 2.**

05



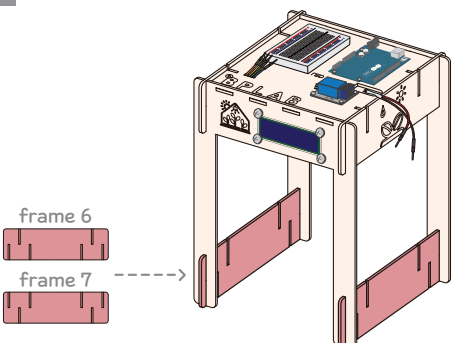
Fit frames 1, 2, and 3 into their respective gaps. Lift the jumper wires connected to the LCD above frame 1.

06



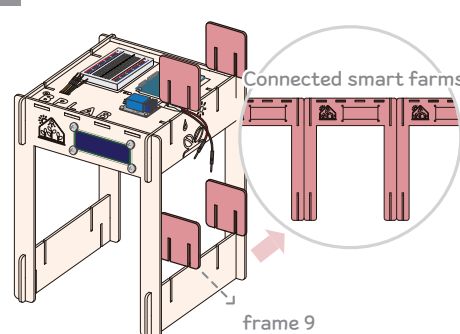
Insert frames 4 and 5, then apply glue to the junction.

07



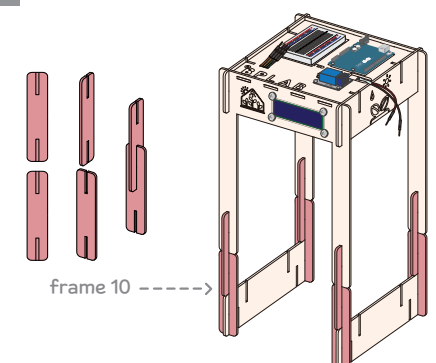
Also attach frames 6 and 7 below the smart farm.

08



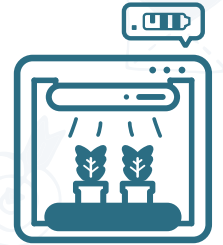
**How to use kit connection parts**  
Multiple smart farms can be connected side by side using Frame 9.

09

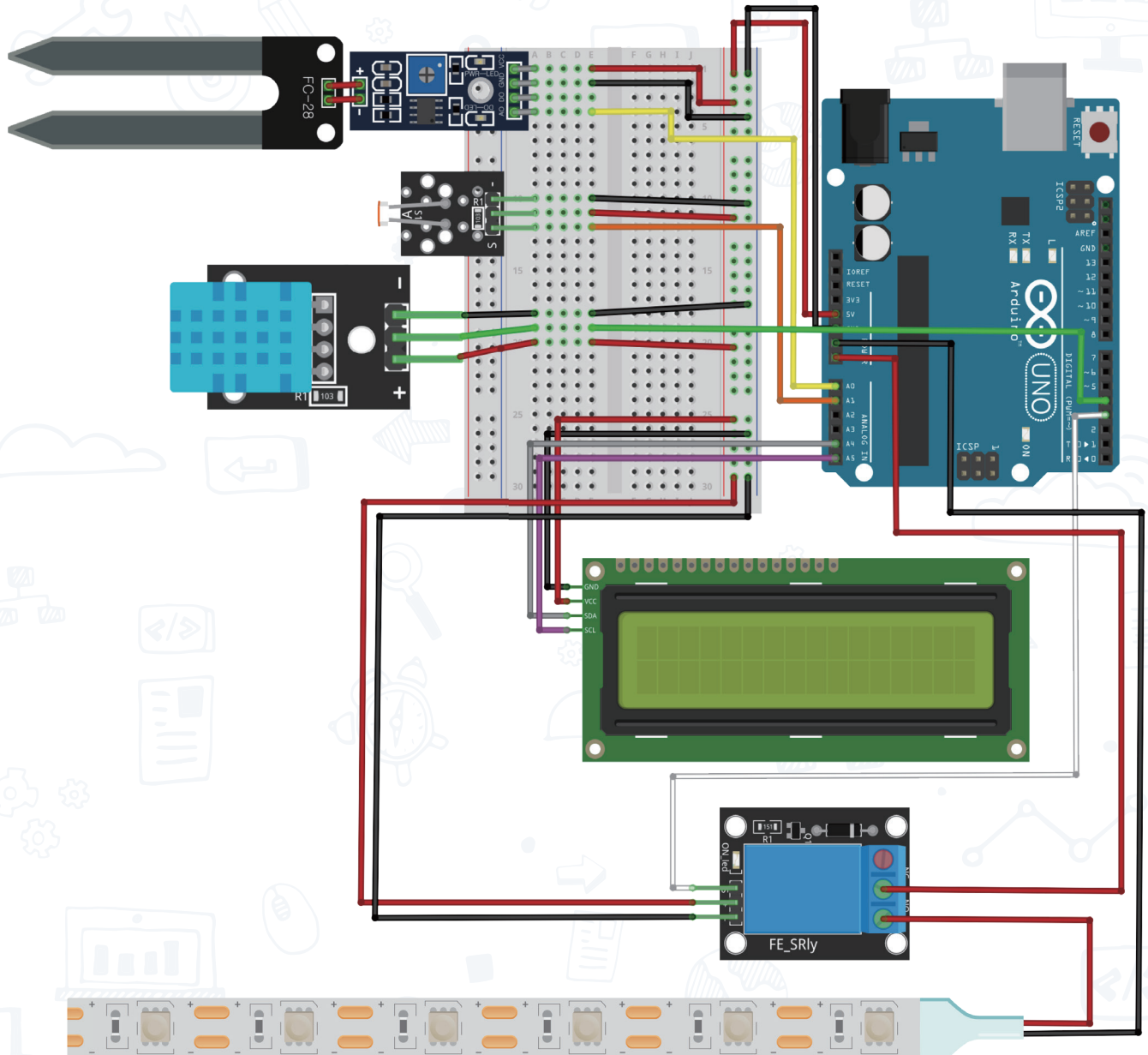


**How to use height extension parts**  
By inserting Frame 10 between the smart farm and Frames 6 and 7, you can extend the height.

# Smart Farm Arduino Circuit



When making modifications to the circuit, **make sure to disconnect the power source** (USB cable or adapter) connected to the Arduino before proceeding with the modifications.



Educational materials can be downloaded from our website:

<https://www.hamiltonbuhl.com/teacher-resource/>

Download Manual, Teacher's Guide, Videos and Drivers there.

