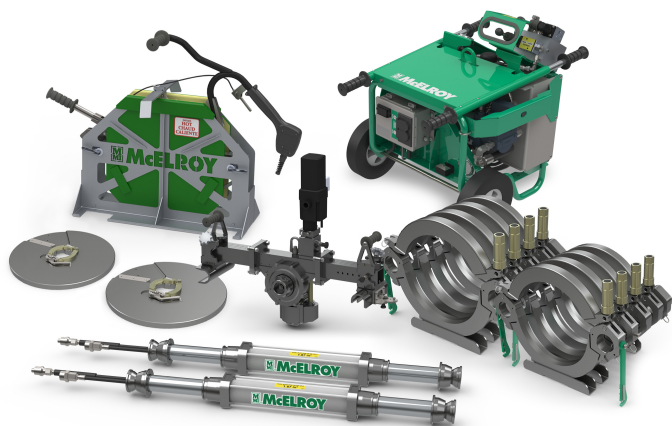


ACROBAT™ 560/630 SIZE + CORE PACKAGE

FUSION CAPABILITY FOR 560MM AND 630MM (22" AND 24")
POLYPROPYLENE PIPE

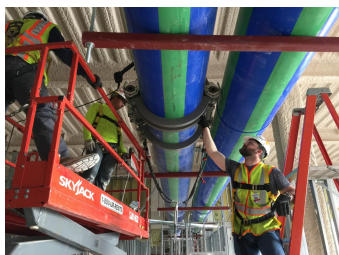


MADE FOR
MECHANICAL
HVAC
PLUMBING



McElroy's Acrobat machines that feature the QuikFit® carriage are size specific and are composed of lightweight, modular components so that the upper and lower jaws can be assembled around the pipe by hand. This eliminates the difficulty of lifting and fitting an entire carriage into a small space. It will fuse pipe in any orientation that is required on plumbing, mechanical and HVAC installations, including vertical and overhead.

ADDITIONAL IMAGES



STANDARD FEATURES

- ✓ Modular, lightweight carriage and facer assemble around the pipe for optimal close-quarter fusion
- ✓ No tools required for assembly or conversion to 3- or 4-jaw unit
- ✓ Core Package can be used with any Acrobat 355-630 Size Package
- ✓ Lightweight facer powered by detachable motor for easy maneuverability
- ✓ HPU features advanced power management system to minimize peak power draw
- ✓ Stackable shipping container designed to store all machine components



DataLogger
COMPATIBLE

SEE SECOND PAGE FOR DETAILED SPECIFICATIONS

ACROBAT™ 560/630 SIZE + CORE PACKAGE

FUSION CAPABILITY FOR 560MM AND 630MM (22" AND 24") POLYPROPYLENE PIPE

SPECIFICATIONS

MODELS		POWER		INCLUDES
A2480103	Size + core package	Heater	220-240V, 3,810 Watts, 50 / 60 Hz, 1 Ph, 17.3 Amps	Includes 560mm and 630mm jaws, heater, facer blade holders, cylinder assemblies, clamp assemblies, carriage skid, facer motor, facer stand, heater/facer rolling cart, HPU and shipping container.
WEIGHTS		Facer Drive Unit	50 / 60 Hz, 1 Ph, 7.4 Amps	
Carriage	560 4-Jaw - 255.5 lbs. (115.9 Kg)	Heater Plug type	NEMA L6-20P	
	560 3-Jaw - 172.5 lbs. (78.2 Kg)	Facer Drive Unit Plug type	NEMA 6-20	
	600 4-Jaw - 263.5 lbs. (119.5 Kg)			
CARRIAGE DIMENSIONS				
560mm Upper Jaw	8.4 lbs. (3.8 Kg)	Length	560 4-Jaw - 55.5" (1,409.7mm) 560 3-Jaw - 44" (1,117.6mm)	
630mm Upper Jaw	9.2 lbs. (4.2 Kg)		600 4-Jaw - 55.5" (1,409.7mm) 600 3-Jaw - 44" (1,117.6mm)	
560mm Lower Jaw	21.7 lbs. (9.8 Kg)	Width	560 4-Jaw - 36.5" (927.1mm) 560 3-Jaw - 36.5" (927.1mm)	
630mm Lower Jaw	22.6 lbs. (10.3 Kg)		600 4-Jaw - 39.5" (1,003.3mm) 600 3-Jaw - 39.5" (1,003.3mm)	
Heater	48.5 lbs. (22 Kg)	Height	560 4-Jaw - 32.5" (825.5mm) 560 3-Jaw - 29.5" (749.3mm)	
Facer Drive Unit	75 lbs. (34 Kg)		600 4-Jaw - 35" (889mm) 600 3-Jaw - 32" (812.8mm)	