

MEGAMC® 2065

20" OD - 65" OD (500MM - 1600MM)



MADE FOR

UNDERGROUND
CONSTRUCTION



ABOUT MEGAMC

The McElroy MegaMc® fusion machines are a revolutionary mix of muscle and versatility. They were the first large-diameter machines that brought the flexibility of the small-diameter machines to large-diameter fusion. Rugged and tough, they are designed to meet the demands of jobsites worldwide and are equally capable of performing quality fusions in the ditch and in close quarters.

The MegaMc carriages are mounted on a wheeled chassis for portability and convenience on large-diameter pipeline jobsites. Easily towable to the fusion area, they remain stationary as sticks of pipe are fused and pulled through.

All of the fusion functions on the MegaMcs are powered smoothly by hydraulics including the clamping and unclamping of the jaws and the fast and efficient facing of the pipe ends. Hydraulic pipe lifts aid in loading and unloading pipe from the machine.

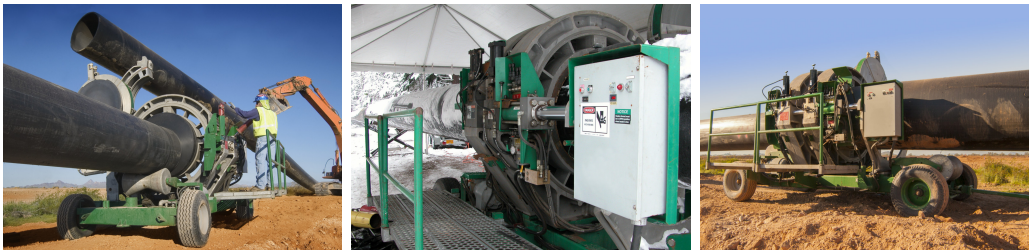
The MegaMcs are compatible with the McElroy DataLogger®, which records and documents the entire fusion process. Joint records are used to verify that proper fusion procedures have been followed prior to installation and can be stored and analyzed in the Vault™, a secure server on the internet.

Pipe type, job requirements and fusion standards are all important aspects of planning a fusion job. The MegaMcs are available in a variety of cylinder forces to meet your jobsite needs.

MEGAMC 2065 SERIES 2

Made for the largest of pipe applications, the MegaMc 2065 has been used around the world as large-diameter polyethylene pipeline projects grow in every industry. It will butt fuse pipe from 20" OD to 65" OD (500mm to 1600mm) and allows for fusions of most fittings without special holders or removal of the outer jaws. Equipped with a unique semi-automatic control system, only one operator is required. The facer and heater hydraulically index left to right and can pivot in and out of the fusion machine. Mitered inserts are also available for fabricating ell.

ADDITIONAL IMAGES



STANDARD FEATURES

- ✓ Patented Centerline Guidance System for equal distribution of force around the joint
- ✓ Industry standard semi-automatic hydraulic control system
- ✓ Simple-to-use independent jaw control puts more flexibility in the hands of the operator
- ✓ Advanced digital heater control offers better temperature control
- ✓ Rugged outriggers for added stability
- ✓ Dual hydraulic pipe lifts aid in loading and unloading pipe
- ✓ Standard Hydraulic Clamping
- ✓ Serrated jaws and inserts keep pipe from slipping during fusion
- ✓ DataLogger® compatible
- ✓ Advanced blade design for smooth face and long life
- ✓ ISO-compliant industrial Teflon-coated heater plates
- ✓ Hard-anodized aluminum wear surfaces for corrosion resistance



DataLogger
COMPATIBLE

MEGAMC® 2065

20" OD - 65" OD (500MM - 1600MM)

SPECIFICATIONS

MODELS		POWER		CHASSIS	
A6300102	High Force, 240V	High Force, 415V Minimum Power Requirements	49.6 kVA / 48.5 kW	Frame	Welded steel construction
A6300104	High Force, 415V			Brake	Mechanical
WEIGHTS				MOBILITY	
Machine	14,000 lbs. (6,350.3 Kg)	High Force, 240V Minimum Power Requirements	50 kVA / 48.8 kW	Mobility Type	Tires - 12 - 16.5LTF, F-12
Spreader Bar	650 lbs. (294.8 Kg)			Transportation	Pulled via towing ring
20" - 48" Heater Heater	600 lbs. (272.2 Kg)	48" - 65" Heater Heater	220-240V, 38,437 Watts	Lifting	Lift points and lifting assembly
48" - 65" Heater Heater	713.5 lbs. (323.6 Kg)	20" - 48" Heater Heater	380-415V, 38,437 Watts	MACHINE DIMENSIONS	
Facer	1,200 lbs. (544.3 Kg)	Facer		Machine Length	186.5" (4,737.1mm)
Shipping Weight	14,400 lbs. (6,531.7 Kg)	High Force, 240V Input Voltage Requirements	220-240V, 50 / 60 Hz, 3 Ph	Machine Width	108" (2,743.2mm)
HYDRAULICS				Machine Height	112" (2,844.8mm)
System Pressure	1,500 PSI (103.4 BAR)	High Force, 415V Input Voltage Requirements	380-415V, 50 Hz, 3 Ph	INCLUDES	
Fusion Pressure	1,500 PSI (103.4 BAR)			Fusion machine, facer, 48" and 65" heaters, 63.51" Master insert set, and lifting assembly.	
Hydraulic Reservoir Capacity	24 Gallons (90.8 Liters)	Plug type	125A, 4 Pole, 5 Wire Pin and Sleeve		
ENGINE		Plug type	200A, 4 Pole, 4 Wire		
Engine Horse Power	10 HP	Facer	Hydraulic		
Engine Fuel Type	Electric				