

# GUIDED SIDE BEND TESTER

DUCTILITY TESTING FOR 1" TO 7" PIPE WALLS



MADE FOR

UNDERGROUND  
CONSTRUCTION



McElroy's Guided Side Bend Tester performs a qualitative test of a fusion joint by destructively testing a coupon. The quality assurance device tests the ductility of polyethylene pipe fusion joints in a safe, quick manner. This testing method places the entire wall thickness into tension and gives assurance of the ductility of joints.

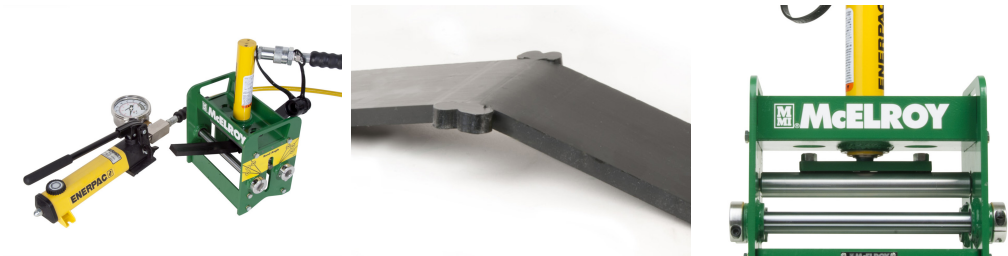
Operators can perform the test safely with the use of a hydraulically-powered device that puts three points of pressure on test coupons. If no gaps or breaks are present in the fusion joint after the test, the result is a passing grade. The Guided Side Bend Tester is lightweight and requires the operator to supply a planer, calipers and saw to complete the testing procedure.

## STANDARD FEATURES

- ✓ Meets ASTM F3183 standard for side bend testing
- ✓ Provides accurate testing for fused joints
- ✓ Qualitative testing of the ductility of a joint
- ✓ Faster, easier and safer than traditional bend tests
- ✓ Can test coupons from up to 7-inch-thick pipe walls
- ✓ Field suitable
- ✓ Lightweight
- ✓ Two-speed hydraulic hand-pump system powers coupon test



## ADDITIONAL IMAGES



## SPECIFICATIONS

MODELS	
<a href="#">S05501</a>	Guided Side Bend Tester

CAPACITY	
Mandrel Diameter	1" (25.4mm)
Maximum Test Coupon Thickness	0.5" (12.7mm)

WEIGHTS	
Machine	31 lbs. (14.1 Kg)

MACHINE DIMENSIONS	
Machine Length	6" (152.4mm)
Machine Width	10" (255mm)
Machine Height	14.6" (370.6mm)

INCLUDES
Testing unit and hydraulic hand-pump. Planer, reciprocating saw, and calipers sold separately.