



AURORA

2943

A ROBERTS SPACE INDUSTRIES ORIGINAL



A highly detailed model of the 2943 Aurora Model Spacecraft is shown in a dynamic pose against a black space background. The spacecraft is a complex, multi-segmented vessel with a prominent cockpit at the front, a large circular sensor or antenna in the middle, and various weapon systems and thrusters. A bright blue light source, likely representing the sun or a distant star, is visible on the horizon, creating a lens flare effect. The overall design is futuristic and militaristic.

IT'S A CALL TO LIFE

FROM THE CHAIRMAN

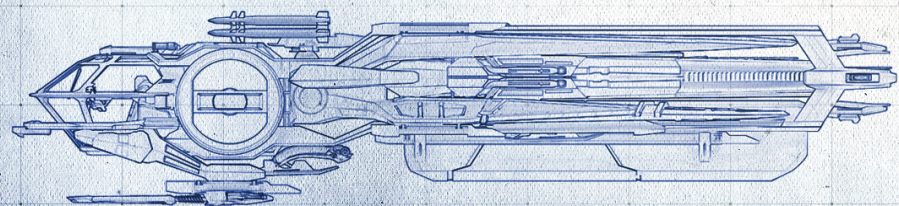
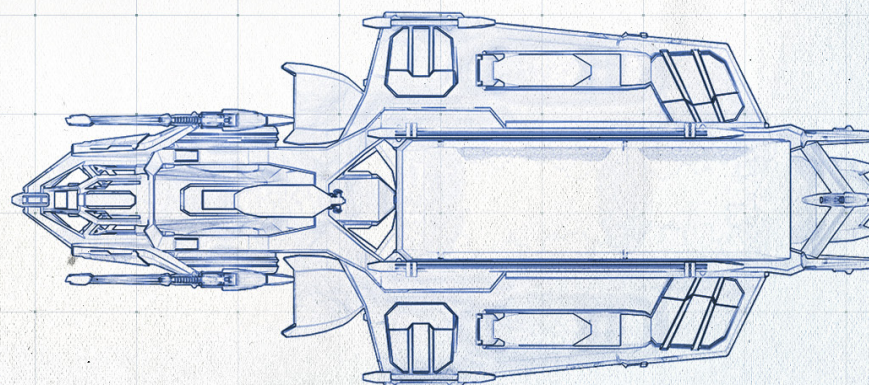
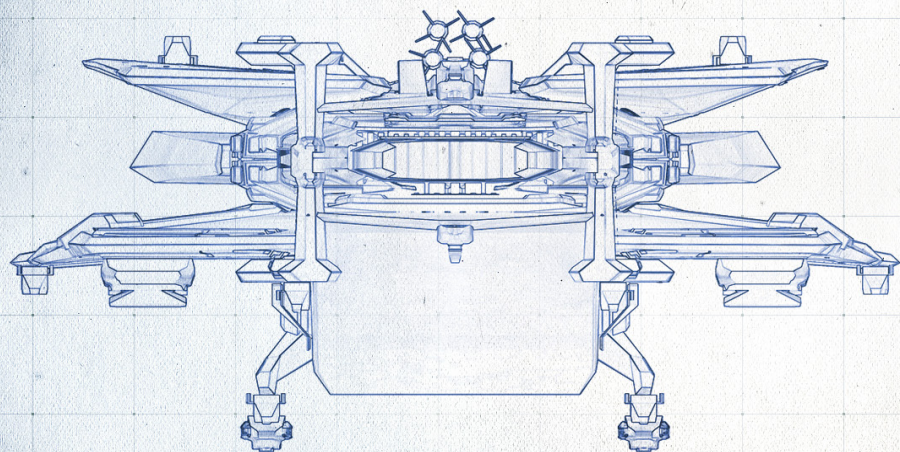
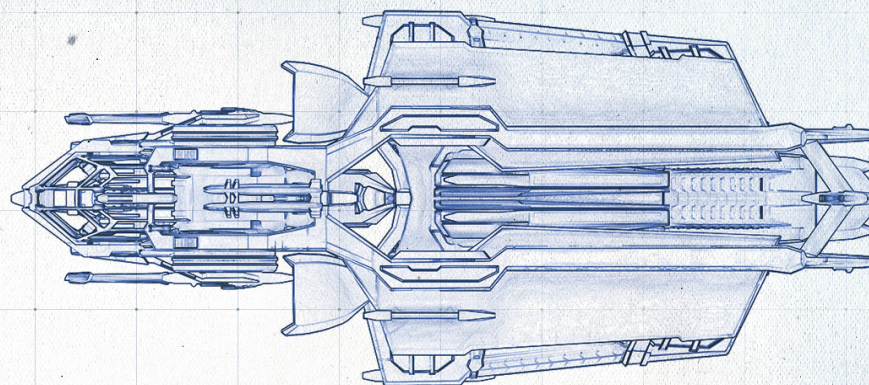
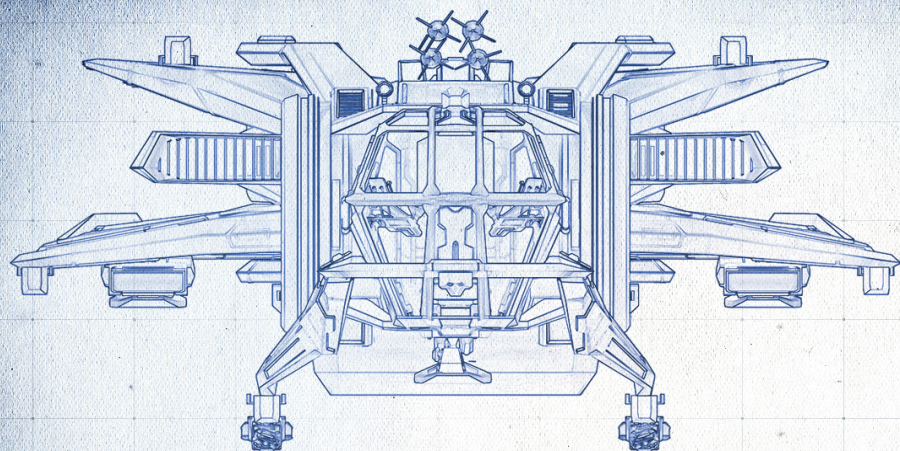
2943 has been an exciting and challenging year so far for RSI. After a successful re-capitalization on the Earth-Terra SPX in late 2942, we've invested in significantly expanding our production capacity at our Angeli Prime and New Austin shipyards in our continued commitment to bringing you the best in spaceship engineering and value. From the designers, engineers, systems specialists, fabricators, and many other hard working employees of Roberts Space Industries, we are proud to unveil the 2943 Aurora Model Spacecraft.



WHAT WOULD YOU PAY FOR THE UNIVERSE?

To some it's just a ship. It's a frame of molded metal. It's wires. A power plant. To the engineers at Roberts Space Industries, it's so much more. They understand what a ship means. It's that moment where you settle into the pilot seat for the first time and the engine hums to life, waiting for you to tell it where to go. In that moment, all the vastness of space is at your fingertips, hungry to be explored.

Yes, RSI knows it's more than a ship, it's the promise of life.



RSI
ROBERTS
SPACE INDUSTRIES

REV DATE: 01
DRAWN BY: SC
APPROVAL: CR

RSI
ROBERTS SPACE INDUSTRIES

ISOMETRIC
RSI AURORA PLAN

**SHEET
ISO-1**

DISCLAIMER: These are not
current specifications or plans.
These are only for display purposes.
During the 3D design and game
development process, some of the
details may change.

WWW.ROBERTSSPACEINDUSTRIES.COM



ENGINEERED TO PERFECTION

From the cockpit, along every hardpoint, to thrusters, the 2943 Aurora was designed with the pilot in mind. While larger ships allow the freedom to avoid design decisions, smaller ones can fail because of them. For that reason, our engineers spent years exploring every possible combination of structural design and building material to create the most flexible, durable modular ship system ever released.

Cargo Mount (x2)

Add an additional cargo hold to the factory standard Equinox mounts or convert to any industry-standard connection.

M4

Class 3 weapon Mount

See available options. Aurora LX comes pre-equipped with 4 Talon IR 4 Stalker missiles.

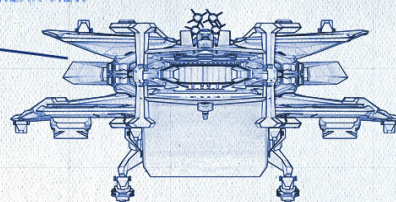
M5

TR2 or 3 Main Thruster Factory standard includes either Alliance Startech KS-9 Fission, A&R LR-5 OverDrive Fission or Juno Starwerk Endurance-300 Fission, depending on model.

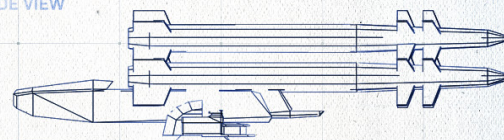
M3

1A

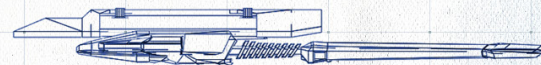
1A
REAR VIEW



M5
SIDE VIEW



M2
SIDE VIEW



M1

C12a Docking Ring (x2)

Dual entry hatches are also compatible with Class III docking mechanisms.

M2

C1 Weapon Mount (x2)

The Behring M3A laser cannon can come standard but it will accept any Class 1 type fixed weapon payload.

RSI
ROBERTS SPACE INDUSTRIES

REV DATE: 03/10

DRAWN BY: RC

APPROVAL: CR

RSI
ROBERTS SPACE INDUSTRIES

ISOMETRIC

RSI AURORA PLAN

NOTES:
1. This drawing is for informational purposes only. It is not to be used for manufacturing or assembly without the written approval of RSI.
2. All dimensions are in inches unless otherwise specified.
3. All dimensions are to centerline unless otherwise specified.
4. All dimensions are to be maintained unless otherwise specified.

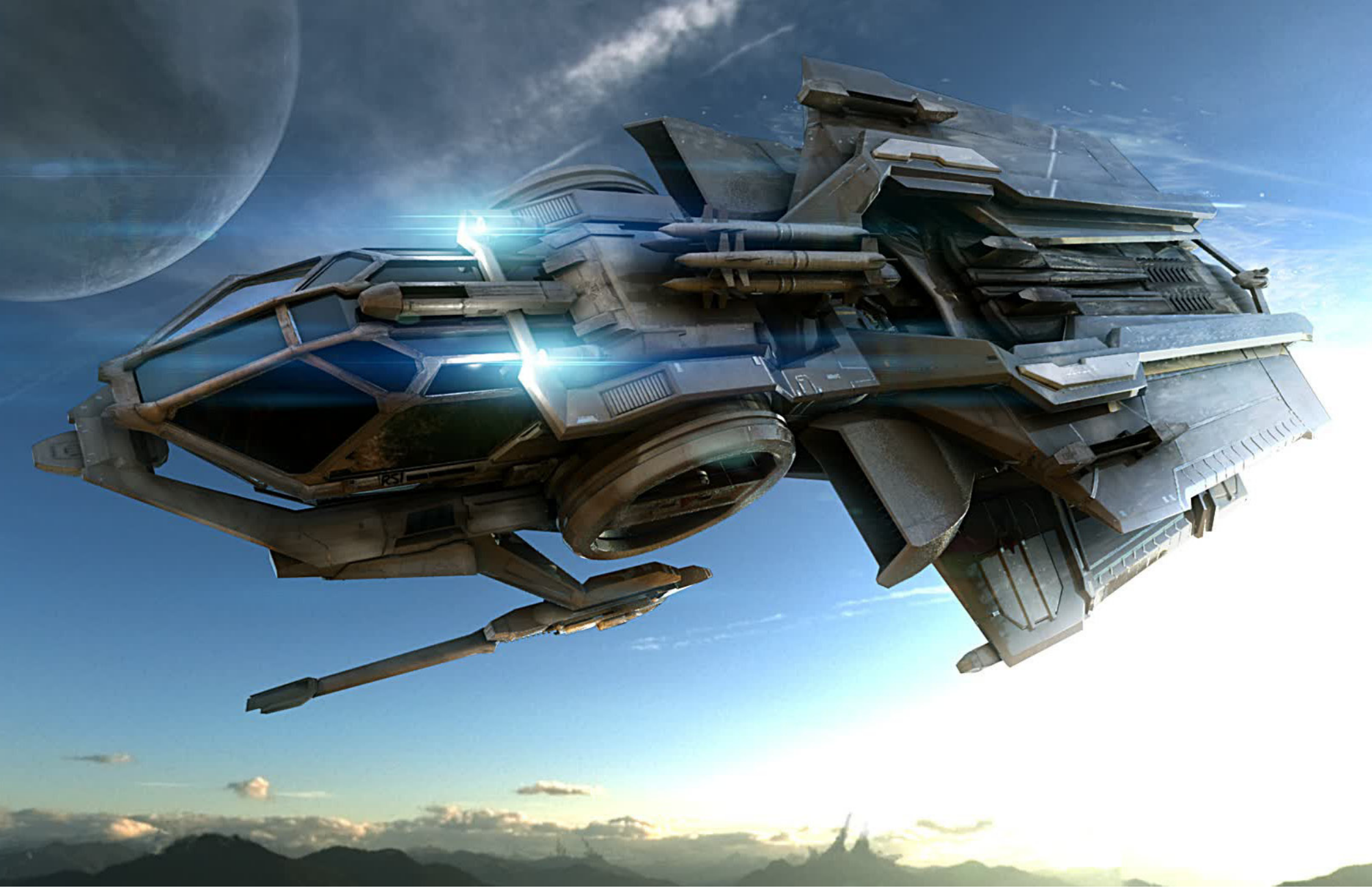
SHEET
ISO-2

CENTURIES OF ENGINEERING ... A CULMINATION OF EXPERIENCE

No company in the history of space travel is more deeply associated with reliability and customer satisfaction than RSI with its continuing line of personal craft. The Aurora continues that tradition: it is engineered as an orchestrated system. From the proprietary IDAssess software custom-built for its sensors, to the enduring strength of its nanocarbon body, the protection an Aurora offers puts the power of your life squarely in your hands.

SPACE IS YOURS





A UNIVERSE OF POSSIBILITIES WITHOUT THE COST

AURORA ESSENTIAL (ES)

Everyone needs to start somewhere.
The 2943 Aurora Essential is a hell of a place to start.
A basic ship that isn't built like a basic ship,
the Aurora ES is everything you need, with no excess.



LENGTH
18.5m



MAX CREW
1



MASS
15,000 Kg



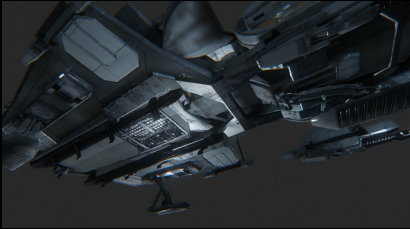
FOCUS
Exploration

STRUCTURE STATS

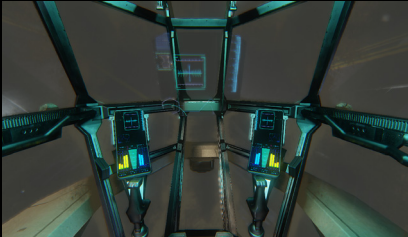
UPGRADE CAPACITY	4
CARGO CAPACITY	5 tonnes
ENGINES	Alliance Startech KS-9 Fission Mount (L1)
MODIFIERS	1
MAX. CLASS	Fission
MAIN THRUSTERS	1 x TR2 (Dragon STC Blue)
MANEUVERING THRUSTERS	8 x TR1
SHIELDS	Seal INK-1 (Size I)

HARDPOINTS

2 X CLASS 1	Nothing equipped
1 X CLASS 3	Nothing equipped



Industry standard attach points allow for a wide variety of aftermarket upgrades




Standard cockpit includes dual mount VDUs and a full forward datapane, each backed by a distributed processor system


AURORA MARQUE (MR)

Perhaps you're looking for something that offers carrying capacity but has combat capabilities too?


The Aurora Marque comes with a pair of Behring-quality lasers and a high quality gun cooler system.




LENGTH
18.5m



MAX CREW
1



MASS
15,750 Kg



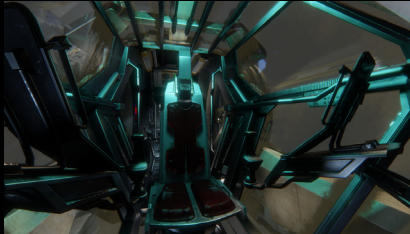
FOCUS
Interdiction

STRUCTURE STATS

UPGRADE CAPACITY	3
CARGO CAPACITY	5 tonnes
ENGINES	Alliance Startech KS-9 Enhanced Fission Mount (L1)
MODIFIERS	1
MAX. CLASS	Fission
MAIN THRUSTERS	1 x TR3 (Dragon STC Red)
MANEUVERING THRUSTERS	8 x TR1
SHIELDS	Seal INK-1 (Size I)
OPTIONS	J-Span OmniCool Reduction Bar Pre-Installed

HARDPOINTS

2 X CLASS 1	2 X Behring Fixed M3A Laser Cannon
1 X CLASS 3	Nothing equipped



A big ship in a small package — able to explore the stars while being small enough to utilize the slightest berths

FullView™ seating allows for 720 degrees of freedom for a maximum field of vision during combat maneuvering

AURORA CLIPPER (CL)

Customized for mercantile and trading excursions, the Aurora Clipper is the perfect vessel for aspiring entrepreneurs and seasoned traders alike. Swapping a smaller power plant and armor capabilities for an expanded cargo capacity, the Clipper ups the ante for personal merchant craft.



LENGTH
18.5m



MAX CREW
1



MASS
17,000 Kg



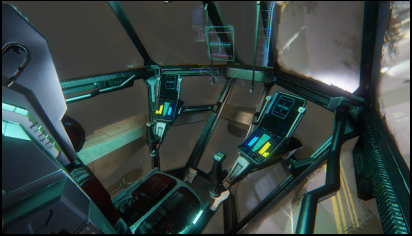
FOCUS
Mercantile

STRUCTURE STATS

UPGRADE CAPACITY	2
CARGO CAPACITY	10 tonnes
ENGINES	Juno Starwerk Endurance-300 Fission Mount (L1)
MODIFIERS	1
MAX. CLASS	Fission
MAIN THRUSTERS	1 x TR3 (X-Forge P/S2-80)
MANEUVERING THRUSTERS	8 x TR1
SHIELDS	Gorgon Defender AllStop (Size 1)
OPTIONS	Tarsus AT Jump Scanner (OptiGlass 3.0 Compatible)

HARDPOINTS

2 X CLASS 1	Nothing equipped
1 X CLASS 3	Nothing equipped



Optional Tarsus AT system with full OptiGlass 3.0 compatibility for jump charting



Optional bulk cargo pod doubles standard carrying capacity

AURORA LX

Most pilots discard their first ship the moment they can afford something sleeker, pricier. Be proud of your roots with the brand-new Aurora Deluxe, built for the discerning pilot who never forgets where he or she came from. The LX features patent leather interior to guarantee comfort for those long stretches in the deep black.



LENGTH
18.5m



MAX CREW
1



MASS
16,500 Kg



FOCUS
Exploration /
Lt. Mercantile

STRUCTURE STATS

UPGRADE CAPACITY	4
CARGO CAPACITY	5 tonnes
ENGINES	A&R LR-5 OverDrive Fission Mount (L1)
MODIFIERS	1
MAX. CLASS	Fission
MAIN THRUSTERS	1 x TR3 (OKB Voshkod Energia IV)
MANEUVERING THRUSTERS	8 x TR1
SHIELDS	Gorgon Defender AllStop (Size 1)

HARDPOINTS

2 X CLASS 1	2 X Behring Fixed M3A Laser Cannon
1 X CLASS 3	1 X 4 Talon IR 4 Stalker Missile







The best defense is a good offense: optional LX package features Behring fixed cannon and Stalker IR missiles

Five-ton cargo bed standard on all models

COMPARISON CHART

CHOOSE THE AURORA THAT'S BEST FOR YOU

	ESSENTIAL	MARQUE	CLIPPER	LEGIONNAIRE	LX
				Coming Soon!	
LENGTH	18.5 meters	18.5 meters	18.5 meters	18.5 meters	18.5 meters
CREW (MAX)	1	1	1	1	1
MASS (EMPTY)	15,000 Kg	15,750 Kg	17,000 Kg	18,500 Kg	16,500 Kg
FOCUS	Exploration	Interdiction	Mercantile	Militia / Patrol	Exploration / Light Mercantile
STRUCTURE STATS					
UPGRADE CAPACITY	4	3	2	2	4
CARGO CAPACITY	5 tonnes	5 tonnes	10 tonnes	5 tonnes	5 tonnes
ENGINES	Alliance Startech KS-9 Fission Mount (L1)	Alliance Startech KS-9 Enhanced Fission Mt (L1)	Juno Stwk Endurance-300 Fission Mount (L1)	A&R LR-5 MAX OverDrive Fission Mount (L2)	A&R LR-5 OverDrive Fission Mount (L1)
MODIFIERS	1	1	1	2	1
MAX. CLASS	Fission	Fission	Fission	Fission	Fission
MAIN THRUSTERS (1 X TR3)	Dragon STC Blue (TR2)	Dragon STC Red	X-Forge P/S2-80	OKB Voshkod Energia IV	OKB Voshkod Energia IV
MANEUVERING THRUSTERS	8 x TR1	8 x TR1	8 x TR1	8 x TR1	8 x TR1
SHIELD	Seal INK-1 (Size I)	Seal INK-1 (Size I)	Seal INK-1 (Size I)	Gorgon Defender AllStop (Size 1)	Gorgon Defender AllStop (Size 1)
OPTIONS		J-Span OmniCool Reduct. Bar Pre-Installed	Tarsus AT Jump Scanner (OptiGlass 3.0 Compatible)		
HARDPOINTS					
2 X CLASS 1	Nothing equipped	2 X Behring Fixed M3A Laser Cannon	Nothing equipped	2 X Klaus & Werner Bulldog Repeater	2 X Behring Fixed M3A Laser Cannon
1 X CLASS 3	Nothing equipped	Nothing equipped	Nothing equipped	1X4 Talon IR 4 Stalker Missile	1X4 Talon IR 4 Stalker Missile



IF YOU CAN DREAM IT, THE AURORA CAN TAKE YOU THERE.

Introducing the brand-new 2943 Aurora-class spaceship. Versatile, affordable, and dependable, the Aurora is the manifestation of the expectations borne out of an open scope and a powerful engine at your fingertips.



FIT FOR A CAPTAIN. PRICED FOR A BUSINESSMAN.

RSI's proprietary ArmaBrace Systems (AB16) is a crashworthy operator seat with an ergonomically contoured seat pan and backrest for added comfort. Other features include a four-point restraint system and a patented, state-of-the-art energy attenuator to protect an expanded occupant weight range.



STRETCH YOUR LEGS OR EXERCISE YOUR IMAGINATION

Getting out and taking a look around has never been so easy! Whether you're pulling into the busiest port in the galaxy or landing on a distant world never before visited by Humans, the standard C12a Docking Ring has you covered. Heavy plexiclear windows give you a good look at the galaxy and a built-in decontamination (x-ray) spray system will keep the nastiest microbes off your ship. The C12a is fully compatible with Roberts Space Industries' entire line of starships and meets the standard docking requirements for all United Empire of Earth and Xi'An ports.

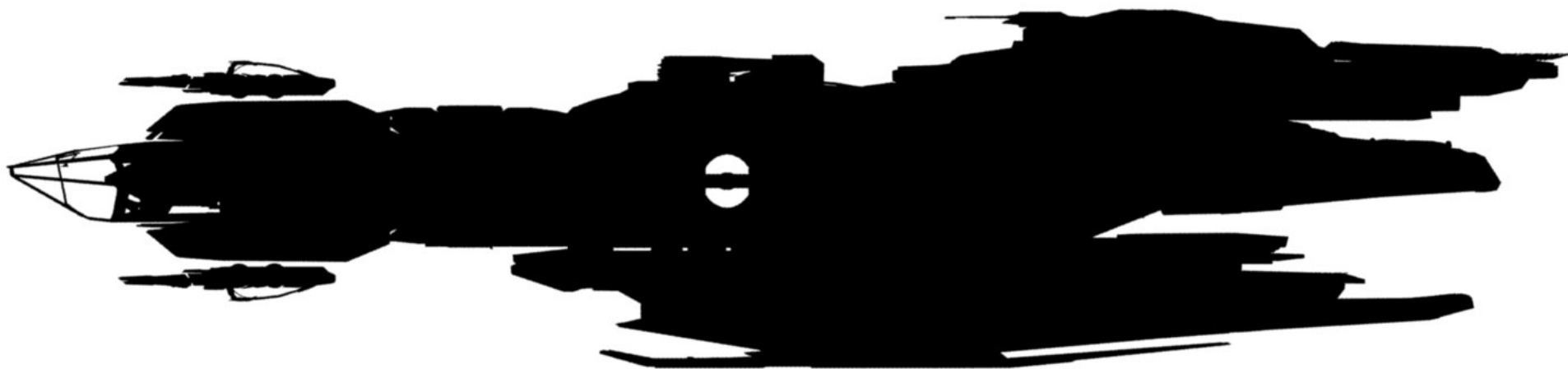


SOMETIMES ALL A LONG TRIP NEEDS IS A GOOD SLEEP

The Aurora features a high quality Roberts Space Industries quantum-line jump engine, which means you can travel the stars without needing to port and refuel after each jump. Long-haul voyagers have a home away from home in this ship's single-occupant sleeping berth. With bulkhead-internal sound dampening autosystems and an N16 OptiGlass tie-in, the Aurora's berth can double as your office, allowing you to monitor all ship systems remotely.



DEPENDABLE. ADAPTABLE. FUN!



ONE IS GOOD, BOTH ARE BETTER

Roberts Space Industries produces several lines of quality spacecraft for the civilian consumer. The Aurora is the premiere single-seat ranged fighter and the Constellation is the best-in-its-class crewed ship. Whether you're exploring the stars, shipping goods or defending your home planet, both ships are excellent choices.

What's more, the Astro Team has crafted the Aurora and Constellation lines to be fully interchangeable. Owners of both ships can share upgrades, cargo pallets, repair systems and consumables without needing to worry about a second supply chain. Operating your own fleet of spacecraft has never been easier or more affordable!

LIMITLESS WAYS TO MAKE THE AURORA YOUR OWN





ROBERTS SPACE INDUSTRIES

Roberts Space Industries is one of the oldest modern Human institutions, with a corporate history that stretches back all the way to mankind's first steps into the stars. Incorporated in the early 22nd century, RSI was responsible for the development of the Quantum Drive that ushered in the colonization of the galaxy. Governments and corporations quickly adopted the technology and began the relentless expansion that would lead to the modern United Empire of Earth.

The company's corporate headquarters is located in New York City on Earth and boasts a showroom displaying the latest model spacecraft and an RSI Museum which displays hundreds of years of famed spacecraft stretching back to the original Zeus. The distinctive RSI tower has been a part of the landscape for generations and the showroom is as much a museum as it is a sales floor. It has become something of a tradition for those touching down on Earth for the first time to visit the facility that birthed "their" ship.

The RSI Aurora remains the most produced spacecraft in history, continually refined over the past decades to allow for a minimum price point and a maximum of upgrade potential. Study after study have shown that, when compared to an ORIGIN or MISC hull, the Aurora is sturdier, more modular and always ready for action. A variety of factory and after-market upgrades allow Aurora pilots to continually push their hulls to the limits.

AURORA

A ROBERTS SPACE INDUSTRIES ORIGINAL

©2943 RSI, LLC • ROBERTSPACEINDUSTRIES.COM

Marketing Communications. All illustrations and specifications contained in this brochure are based on the latest product information available at the time of publication. RSI reserves the right to make changes at any time, without notice, to colors, materials, equipment, specifications and models. Any variations in colors shown are due to reproduction variations of the printing process. Illustrations may include test situations. Some craft may be shown with non-UEE equipment. Some craft are shown with optional equipment.

