

- LEGEND:**
- Statutory Iron Posts found shown thus ●
 - Subject Lots shown thus [Solid Line]
 - 50m Perimeter around subject lots shown thus [Dashed Line]
 - 50m Access Zone Excluding Private Property shown thus [Light Purple Shaded Area]
 - Building footprint shown thus [Hatched Area]
 - Power poles are shown thus ● PP
 - Light poles are shown thus ☼
 - Fire hydrants are shown thus 🔗
 - Telephone pedestals are shown thus □
 - Signs are shown thus [Sign Symbol]
 - Coniferous trees are shown thus ●
 - Deciduous trees are shown thus ●
 - Barbed-wire Fences are shown thus -x-x-x-
 - Edge of Asphalt are shown thus - - - - -
 - Overhead powerlines are shown thus -P-
 - Concrete walk are shown thus [Dashed Line]
 - Retaining walls are shown thus [Blue Line]
 - Face of Curbs are shown thus [Solid Line]

SURVEYED: MARCH 27th, 2018

CERTIFIED CORRECT:

[Signature]

DOUG NEUFELD, A.L.S.

Date: May 1, 2018



NOTES:

Distances shown are in Metres and decimals of a Metre.

Bearings are 3TM NAD '83 [Original]
with Central Meridian of 114° West Longitude derived from
G.N.S.S. observations

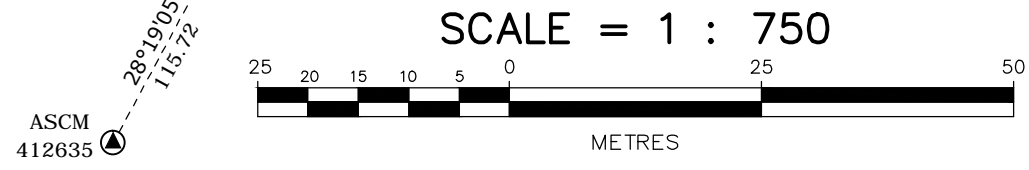
Coordinates are 3TM NAD '83 [Original]
with Central Meridian of 114° West Longitude derived from
Published value at A.S.C.M. 412635

Combined Scale Factor : 0.999810

ALBERTA HEALTH

SKETCH PLAN SHOWING
50m ACCESS ZONE FOR
HEALTH CLINIC
MA: 12409-109A AVENUE
LOTS 10 & 11, BLOCK 58, PLAN RN39B
N.W.1/4 SEC.6-53-24-W4M
CITY OF EDMONTON, ALBERTA

DATE: APRIL 23rd, 2018	SCALE: 1:750	REV.
HAMILTON & OLSEN SURVEYS LTD EDMONTON, ALBERTA - Ph. 465-7111 FILE No.: 18055S01 D.G. J.A.	DRAWING No. 18055S01.dwg	2
FNB: 2212-29/35 REF. DWG.: N/A	SHEET 1 of 1	



REV.2	AMENDED LEGEND	MAY 1/18	J.A.
REV.1	AMENDED LEGEND	APR.26/18	J.A.