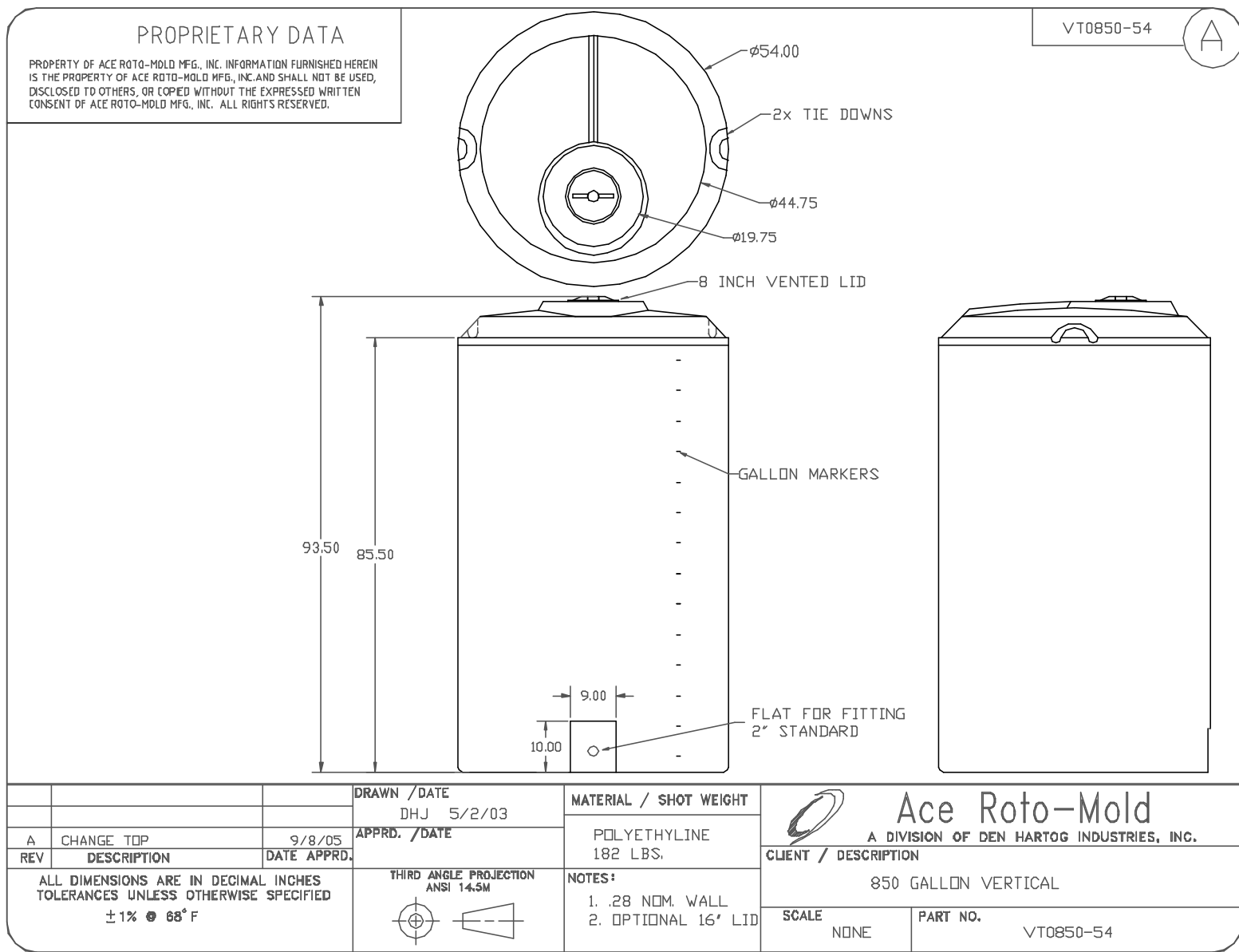




if it flows,
we go with it

1.800.665.4499
barrplastics.com



			DRAWN / DATE DHJ 5/2/03	MATERIAL / SHOT WEIGHT POLYETHYLENE 182 LBS.	<p style="margin: 0;">Ace Roto-Mold A DIVISION OF DEN HARTOG INDUSTRIES, INC.</p>
A	CHANGE TOP	9/8/05	APPRD. / DATE		
REV	DESCRIPTION	DATE	APPRD.		PART NO. VT0850-54
ALL DIMENSIONS ARE IN DECIMAL INCHES TOLERANCES UNLESS OTHERWISE SPECIFIED $\pm 1\%$ @ 68°F			THIRD ANGLE PROJECTION ANSI 14.5M 	NOTES: 1. .28 NOM. WALL 2. OPTIONAL 16' LID	SCALE NONE