



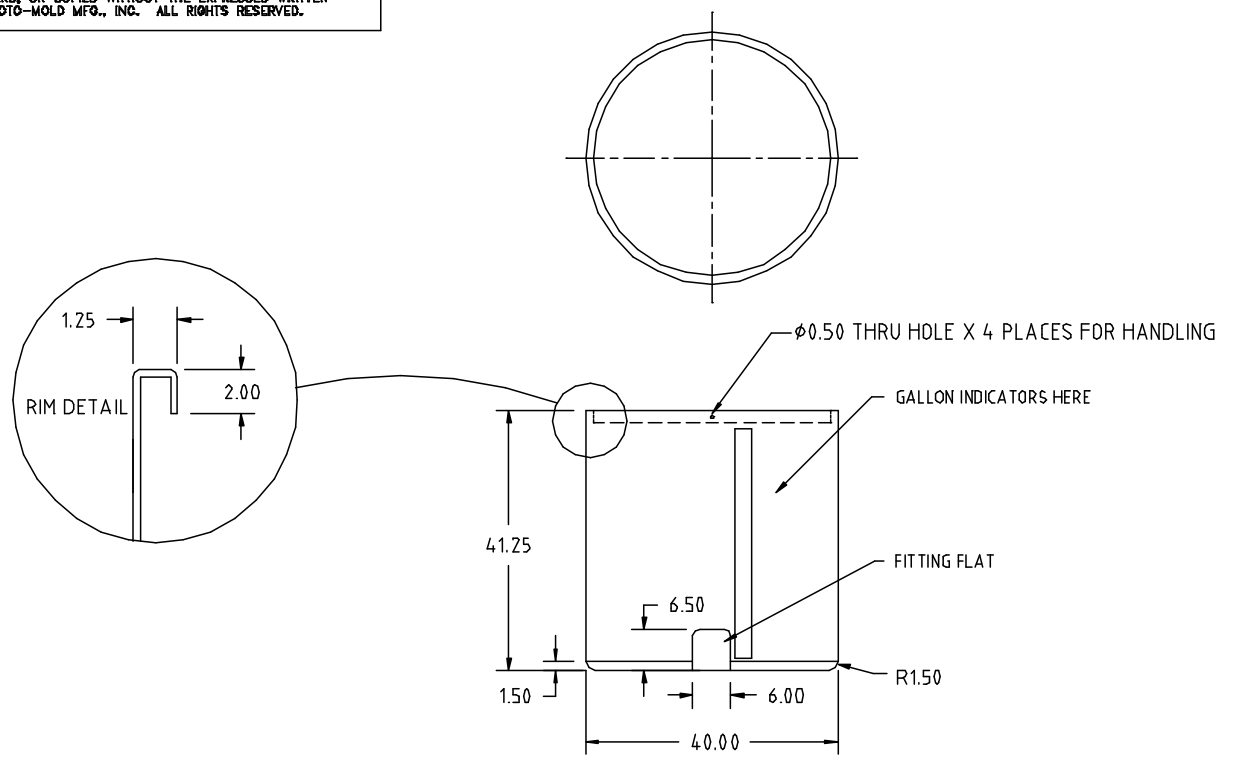
if it flows,
we go with it

1.800.665.4499
barrplastics.com

PROPRIETARY DATA

PROPERTY OF ACE ROTO-MOLD MFG., INC. INFORMATION FURNISHED HEREIN IS THE PROPERTY OF ACE ROTO-MOLD MFG., INC. AND SHALL NOT BE USED, DISCLOSED TO OTHERS, OR COPIED WITHOUT THE EXPRESSED WRITTEN CONSENT OF ACE ROTO-MOLD MFG., INC. ALL RIGHTS RESERVED.

OP0210-40



				DRAWN / DATE REH/05/6/02	MOBIL 134 = 48 LB.	ACE ROTO-MOLD A DIVISION OF DEN HARTOG INDUSTRIES, INC. 4018 HWY. 60 BLVD., BOX 421, HOSPERS, IOWA 51238
				APPRD. / DATE REH/05/6/02		
REV	DESCRIPTION	DATE	APPRD	ALL DIMENSIONS ARE IN DECIMAL INCHES TOLERANCES UNLESS OTHERWISE SPECIFIED ± 1% @ 68° F		SCALE N.S.
				THIRD ANGLE PROJECTION ANSI 14.3M 	PART NO. OP0210-40	