



if it flows,
we go with it

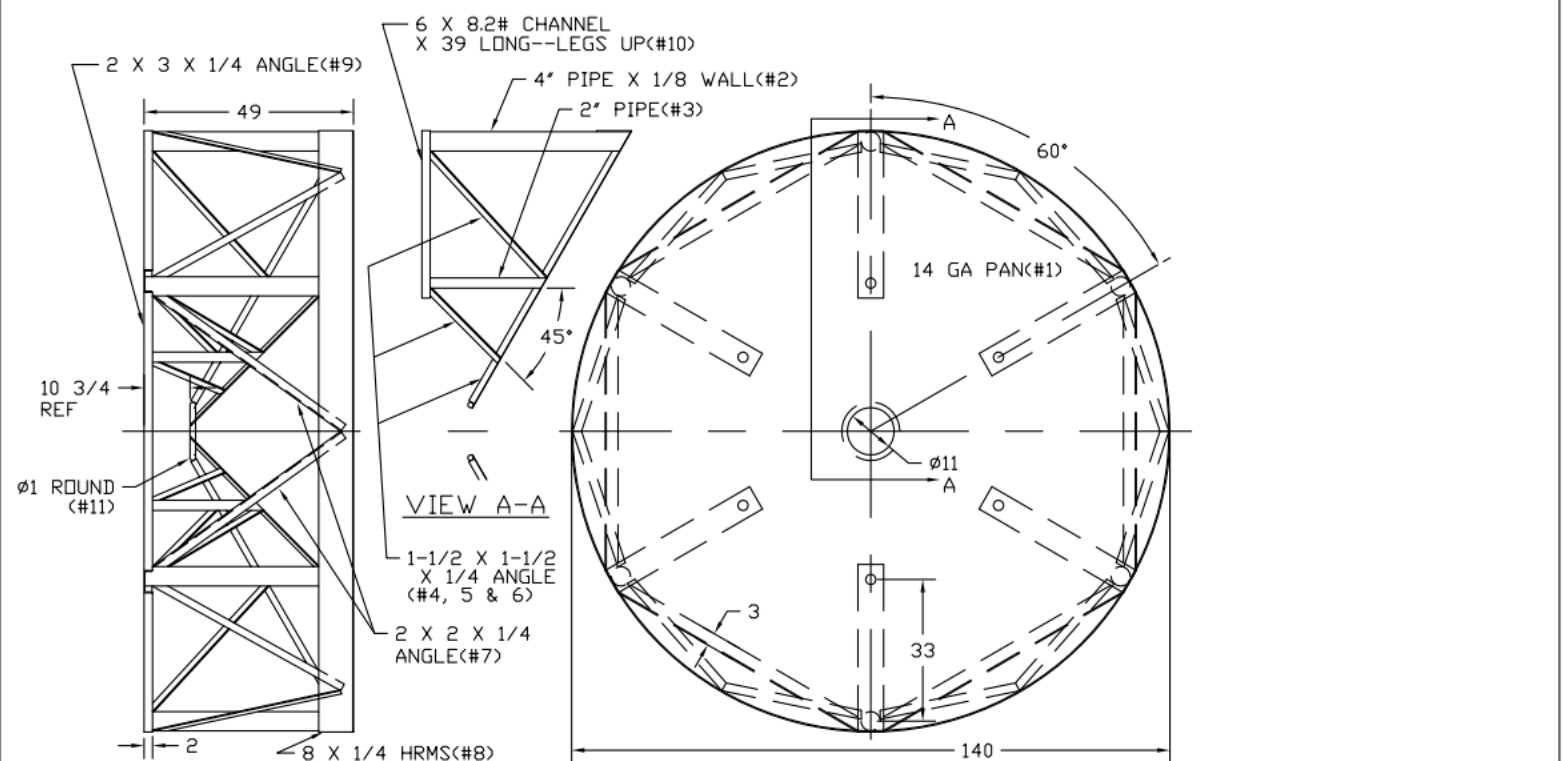
1.800.665.4499
barrplastics.com

ITEM #	QTY	DESCRIPTION	ITEM #	QTY	DESCRIPTION
1	1	14 GA PAN	7	12	2 X 2 X 1/4 ANGLE
2	6	4 PIPE W/ 1/8 WALL	8	1	8 X 1/4 HRMS
3	6	2 PIPE	9	6	2 X 3 X 1/4 ANGLE
4	6	1-1/2 X 1-1/2 X 1/4 ANGLE	10	6	6 X 8.2# CHANNEL X 30
5	6	1-1/2 X 1-1/2 X 1/4 ANGLE	11	1	1 DIA ROUND
6	6	1-1/2 X 1-1/2 X 1/4 ANGLE			

NORWESCO
ST. BONIFACIUS, MN

STEEL STAND, 7500 USG (28,388 LTRS)
CONE BTM TANK

SIZE	FSCM NO.	DWG NO.	REV
A		61860	



ALL INFORMATION CONTAINED IN THIS DRAWING IS STRICTLY CONFIDENTIAL AND PROPERTY OF BARR PLASTICS INC. NO PART SHALL BE COPIED OR REPRODUCED WITHOUT THE WRITTEN CONSENT OF BARR PLASTICS INC.

Customer Drawing Approval

Customer _____

Barr Plastic Inc. _____

BARR
Plastics Inc.

PROJECT: - TANK APPROVAL DWG

CLIENT: -

DRAWING REF: -

DATE: 18 AUG 05

SCALE: -

REV: -

MATERIAL SPECIFICATIONS

HDPE 1.5 SPG

ALL FITTINGS ARE POLYPROPYLENE WITH EPDM GASKETS

H:\BPT SALES DWG\TANKS Norwesco_Snyder_Ace\Norwesco\Cone Bottom Tanks\Bases\7500BASE.DWG