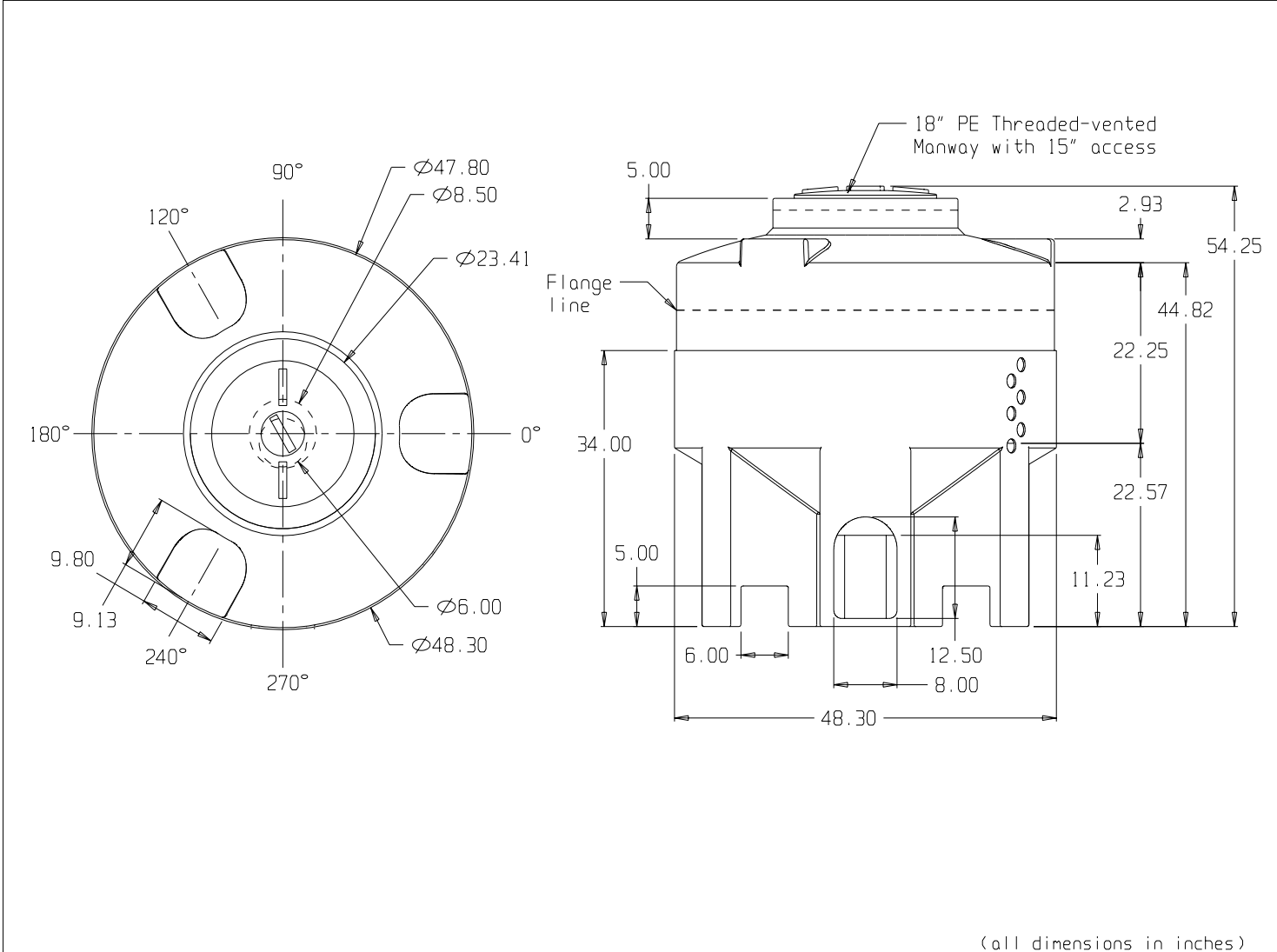




if it flows,
we go with it

1.800.665.4499
barrplastics.com



SNYDER INDUSTRIES INC.

BASE FITTINGS TO BE LEFT INSTALLED AT TIME OF SHIPMENT PER Sii PROCEDURE		(all dimensions in inches)	
225 GALLON 30° CONE BOTTOM TANK W/STAND		PART #	TANK: H156040000--
		REF#: 0000	06/21/02