



celebrating  
50 years

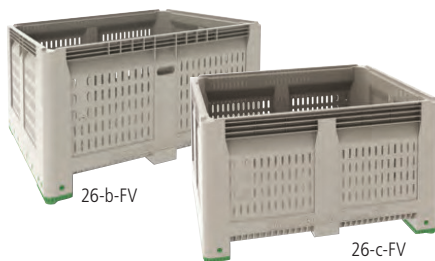
1.800.665.4499  
barrplastics.com

## MacroBin® 26 Series



**26-a-FV** The MacroBin 26-a-FV and the full 26 Series product line are produced with the latest high-pressure injection molding technology for greater durability.

The MacroBin 26 Series, Macro Plastics' most popular line of bulk harvest and storage bins, is designed with a square footprint to hold up to 1,300 pounds. With double-wall corner and center posts, and two full-length feet with a positive interlocking feature, these bins are durable, yet still lightweight and easy to handle.



The 26 Series has two additional model variations; the MacroBin 26-b-FV and the 26-c-FV.

Inquire with your Macro Plastics Sales Representative as to which bin best suits your needs.

### Feature Highlights

- **Impact-grade plastic** lasts longer, standing up to heavy day-to-day use, season after season. The molded plastic resists splintering, reducing damage to product and maintenance costs. Bin repair is inexpensive with hot air welding.
- **Lightweight construction** reduces shipping costs and makes MacroBins easier to move; their interlocking foot design makes them safer to stack — up to 10 high.\*
- **FDA-approved materials** are certified safe for use with food products, eliminating many HACCP problems associated with wood bins.
- **Ventilation slots** facilitate the use of thermofogging, reduce heat absorption and cooling costs, and provide for quicker drying and degreening. Narrow vents are also available in the 26-a-FV.
- **Nonporous surfaces** won't absorb water or dehydrate your product like wood bins, and they provide a constant tare weight throughout their use.
- **Rounded corners and smooth surfaces** mean fewer scuffs, abrasions, and cuts on your product. Risk of contamination is reduced because there are fewer places for unwanted particles to hide.
- **Easy-to-sanitize** MacroBins keep cleaning costs to a minimum. A high-pressure wash removes most debris; a nonabrasive brush can dislodge any remaining items.

\*See reverse for maximum stack weight specifications.

