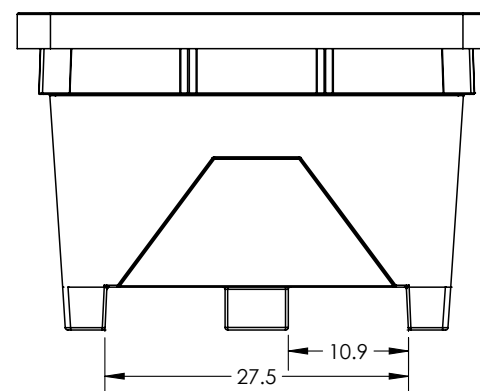
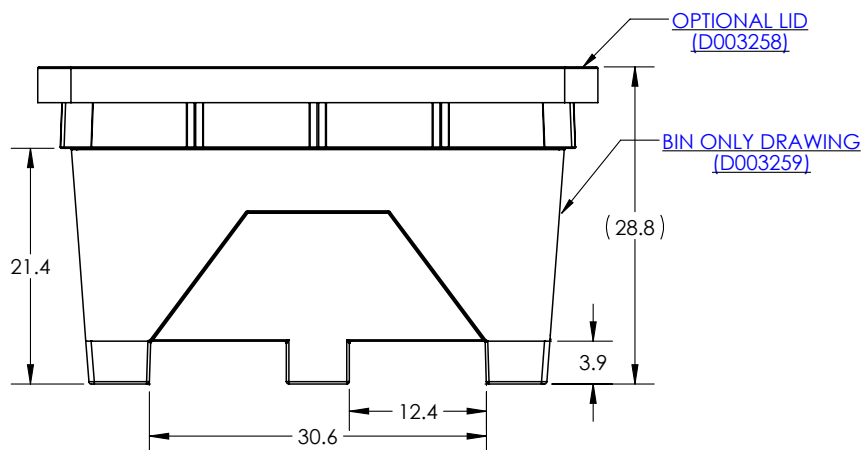
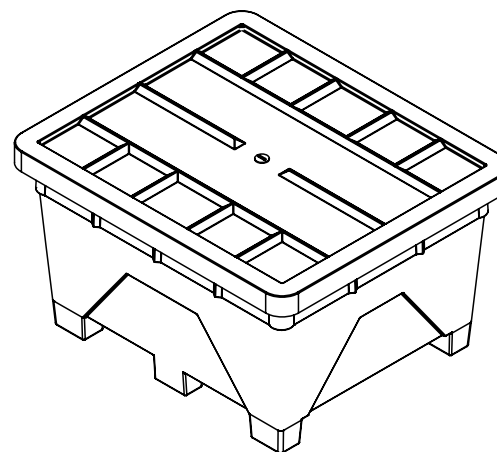
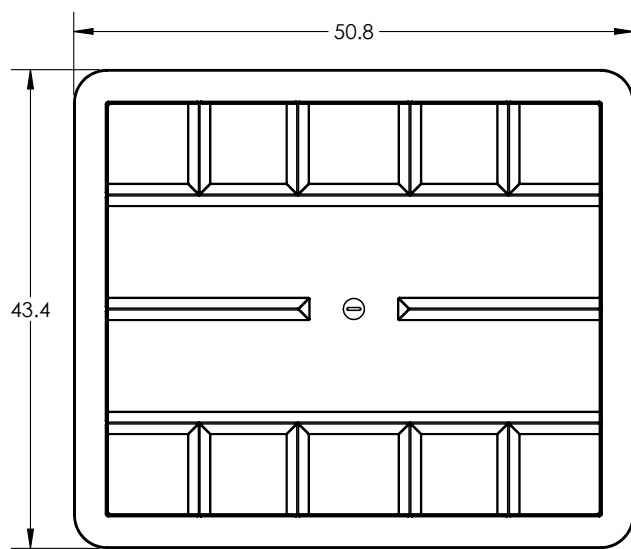




if it flows,
we go with it

1.800.665.4499
barrplastics.com



ALL DIMENSIONS ARE IN INCHES, NOMINAL, & SUBJECT TO CHANGE WITHOUT NOTICE.
ALL DIMENSIONS ON ROTATIONAL MOLDED PARTS ARE SUBJECT TO A \pm 3% TOLERANCE.

DO NOT SCALE		DRAWN BY IGG	 BONAR PLASTICS WWW.BONARPLASTICS.COM	TITLE: ASM BIN TT851 W/LID	REVISION A	
STATUS: Released	© SNYDER INDUSTRIES INC., 2015					
ALL DIMENSIONS, DESIGNS, AND INFORMATION ON THIS PRINT MUST BE CONSIDERED PROPRIETARY TO SNYDER INDUSTRIES, INC. AND MAY NOT BE USED, COPIED, OR DISTRIBUTED WITHOUT WRITTEN PERMISSION OF AN OFFICER (OR HIS AGENT) OF THE FIRM.		1005 Atlantic Drive West Chicago, IL 60185 (630)293-0303 www.bonarpastics.com		PART NO. 10234XXM	ENG. ID. D004089	
				SHEET 1 OF 1		