



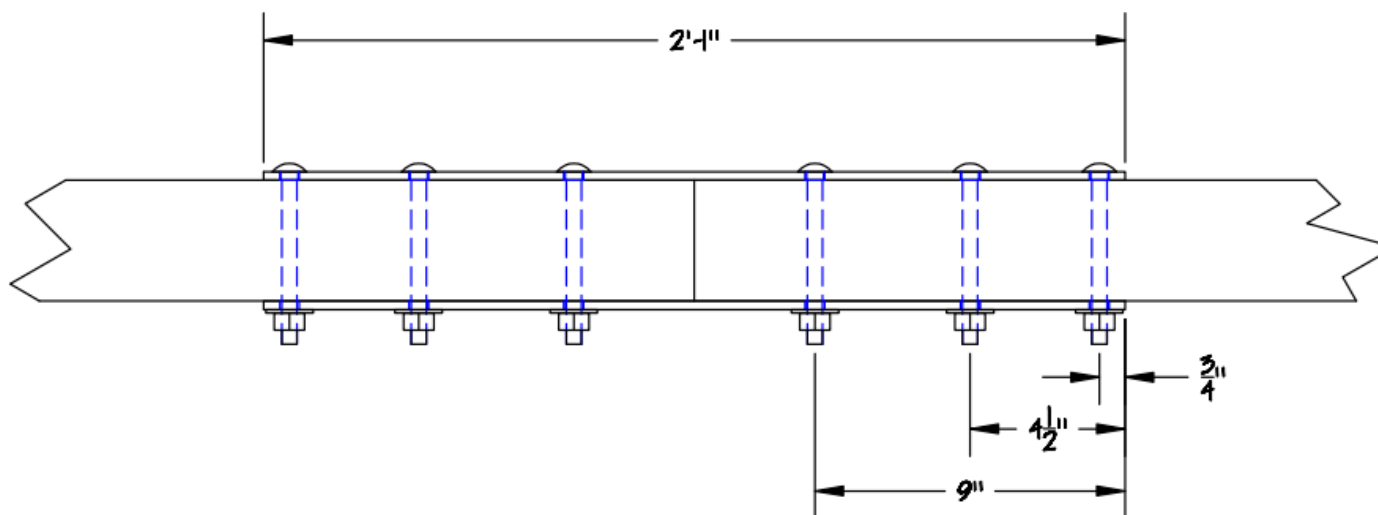
if it flows,  
we go with it

1.800.665.4499  
barrplastics.com

## Splice Plate (H-SP)

Splice plates are designed to join two timbers together. Here we have 4"x6" material and so you would use  $\frac{1}{2}$ "x5" carriage bolts to fasten them together.

All hardware is  $\frac{1}{4}$ " thick steel that is hot-dipped galvanized, unless otherwise noted.



		Splice Plate		
		Hardware Detail		