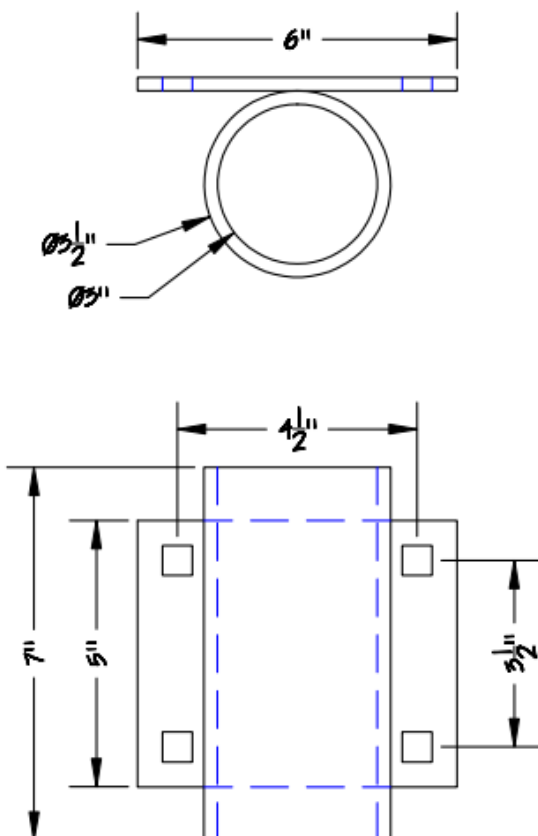




if it flows,
we go with it

1.800.665.4499
barrplastics.com



3" Pipe Holder (P-3)

These can be bolted on the side of a stringer and uses 2" standard pipe to anchor docks in place.

All hardware is $\frac{1}{4}$ " thick steel that is hot-dipped galvanized, unless otherwise noted.

		P-3		
		Hardware Detail		