



if it flows,
we go with it

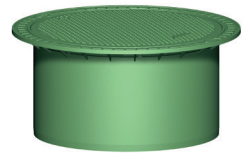
1.800.665.4499
barrplastics.com

Belowground Rainwater Harvesting

Choose your dome shaft:

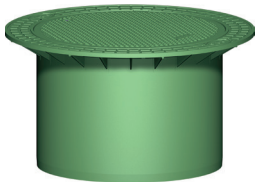
Part #371010: Mini Telescopic Dome Shaft

Infinitely adjustable from 29" - 37" earth cover above the tank, can be tilted by 5 degrees. Designed to allow pedestrian loading, this product includes a PP cover with childproof lock. Colour: Grass Green. Length: 14.2", Inner: 23.6", Outer: 30.6", weight: 13 lbs. This well thought out cover for the Carat S underground tank is ideal for garden use.



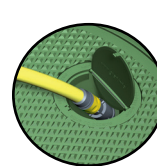
Part #371011: Maxi Telescopic Dome Shaft

Infinitely adjustable from 29" - 41" earth cover above the tank. Designed to allow pedestrian loading; includes PP cover with childproof lock. Colour: Grass Green. Length: 18.7", Inner: 23.6", Outer: 33.5", weight: 29 lbs. It serves as the sturdy cover for the Carat S underground tank. Ideal for household use.



Part #375117: Internal Water Connection Box

Drain water directly from the tank. Easy retrofitting for telescopic dome shaft Mini or Maxi, hose connection 1*



Part #371003: Cast Iron Telescopic Dome Shaft

For vehicle loading - with class B cast iron cover. Infinitely variable from 31" - 41" earth covering over the tank. Length: 18.7", Inner: 23.6", Outer: 33.5". For use in the home and garden. The tank is flush with the ground.

Part #371011: Extension

Length: 19.7", 27.6". An earth covering of max. 59" can be implemented when using the extension and the telescopic dome shaft. For use with the basic Carat S tank with an earth covering of 40".

