



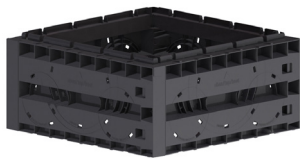
if it flows,  
we go with it

1.800.665.4499  
barrplastics.com

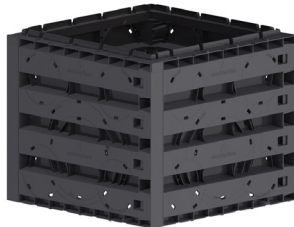
# Stormwater Management

## Vario 800 Flex Shaft System

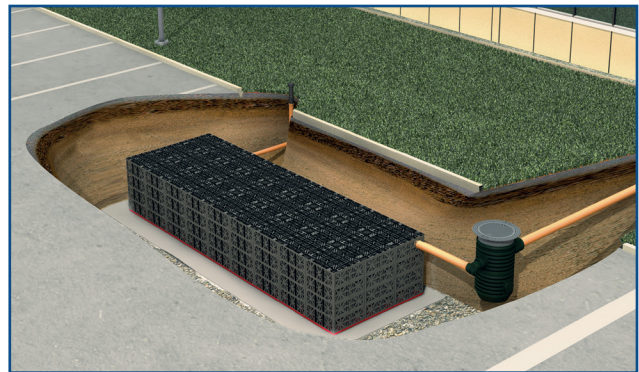
The Vario 800 Flex Shaft System provides even more flexibility to your EcoBloc system; the shaft can be fully integrated into an EcoBloc retention/detention system with no restrictions on the position it is placed. The corner position enables the connection of large pipe diameters of up to 16" on the two side panels. The central position enables the connection of large pipe diameters of up to 16" on the two side panels. The central position offers ideal access to the inspection camera from all directions. Using the optional GRAF Universal Shaft inlet module, a connection of up to 12" can be made with a freely defined angle. The recommended inlet module rotates 360° for precise positioning for optimal connections to be made. A 23.6" clearance allows for optimal accessibility.



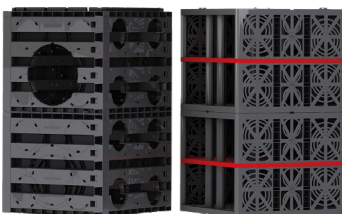
Vario 800 Flex Type 1



Vario 800 Flex Type 2



Part #	Size (in)	Description
450050	31.4 x 31.4 x 14	Vario 800 Flex Type 1 (for one layer of EcoBloc)
450051	31.4 x 31.4 x 26	Vario 800 Flex Type 2 (for two layers of EcoBloc)



Part #	Description
450052	Vario 800 Flex Base & Cover Set
330360	Infiltration Inlet Module w/ Telescopic Dome Seal
371003	Manway Extension (Length: 11.8")

