

Town Center Traffic Improvements

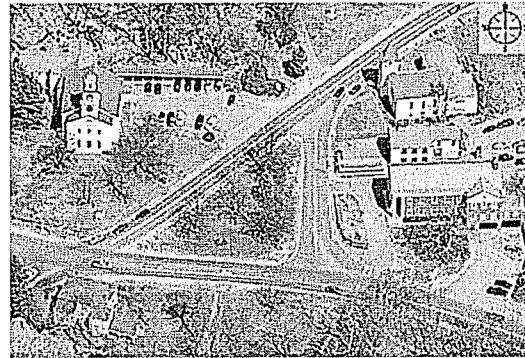
Estimated Total Cost: **\$1,500,000**

Estimated Future Savings: \$0

Estimated Incremental Costs: \$0

Staffing Changes: None

Recurring: Non-recurring: **X**



Justification Code: A/D R or NR: NR Priority: 2

Project Description:

Request \$1,500,000 in FY13 for final engineering design, contract document preparation and construction of traffic improvements to the Town Center.

Previous funding in FY07 from the Sudbury Foundation (\$50,000) and the CPA (\$15,000) provided the town with an array of concept designs for improvements to the Concord Road/Hudson Road/Old Sudbury Road area, including traffic safety and pedestrian improvements, and landscape and historic preservation enhancements. Funding in FY08 in the amount of \$100,000 (\$70,000 from the Capital budget and \$30,000 from CPA) produced engineering design plans for the intersection.

This CIP proposal requests funding for the final engineering design, bid documents and construction of the intersection improvements. The estimated total (highest) price for the project is approximately \$1,800,000. Some portion of this (approximately \$300,000) may be eligible for CPC funding under historic preservation and open space, and is excluded from this request for Capital Improvement Funds. Additionally, Chapter 90 funding for this project may be allocated in the Department of Public Works budget for the anticipated construction year, which could reduce the requested amount to \$1,000,000.

The Town has moved carefully and methodically through this project in order to balance competing needs and interests in the historic town center. The final plan reflects the community objectives determined during the public processes of the Sudbury Center Improvement Advisory Committee, as enumerated in their final report dated March 2008 and listed below:

- *Preserve and protect historic, cultural and natural resources in the center.*
- *Improve safety and accessibility for all those that use Sudbury Center.*
- *Improve traffic flow, but not traffic speed, through the center.*
- *Protect the existing scale and visual character of the center.*
- *Establish a clear sense of the town center as a civic location.*

Justification and Need:

The Town of Sudbury is seeking to address several key issues with the redesign and reconstruction of the intersection of Concord Road, Hudson Road, and Old Sudbury Road. These improvements include increasing the safety of the intersection for automobiles, pedestrians, and bicyclists; adding infrastructure improvements for pedestrians and bicyclists; preserving the historic and natural features of the roadway; and enhancing the historic and natural features and appearance of the area.

Benefit:

This project is consistent with the 2001 Master Plan goal of preserving community character in all aspects of planning and development. Re-design of this intersection in combination with historic preservation and enhancement of pedestrian circulation is a stated goal of the Town. The Board of Selectmen has prioritized this project as a goal since 2006.

In addition to the important matter of public safety, the improvements proposed by this project will preserve the character and historic assets of one of the key intersections in the community, and certainly the key intersection for its inclusion of noteworthy historic properties and features. The entire project area is encompassed by the Sudbury Center Historic District.

Alternatives Considered and Reasons for Rejection:

Alternatives were considered in the course of the design options. The final plan reflects the desired improvements as articulated by the residents, and reflects minimal changes to the area. The only other alternative is to only replace the signals in place, as these are beginning to malfunction. However, removing and replacing the signals without creating properly aligned left turn lanes will not solve the safety issues, will still be costly and will require significant disturbance in the intersection. The plan proposed creates minimal changes to the overall area but provides substantial safety improvements.

Consequences of Not Implementing

The intersection in the town center is used regionally as the surrounding towns develop both residentially and commercially. It can no longer operate efficiently or safely given the number of vehicles using it on a daily basis. Traffic will continue to increase, particularly with proposed large-scale developments in both Maynard and Wayland. While the goal of the project is not to accommodate an increase in traffic volume, some basic changes to the intersection are needed to make it safer for vehicles and pedestrians.

Attachment:

Final Design Plan

SCIAC Final Study <http://sudbury.ma.us/documents/dl/4149/FinalReportMarch08.pdf>

