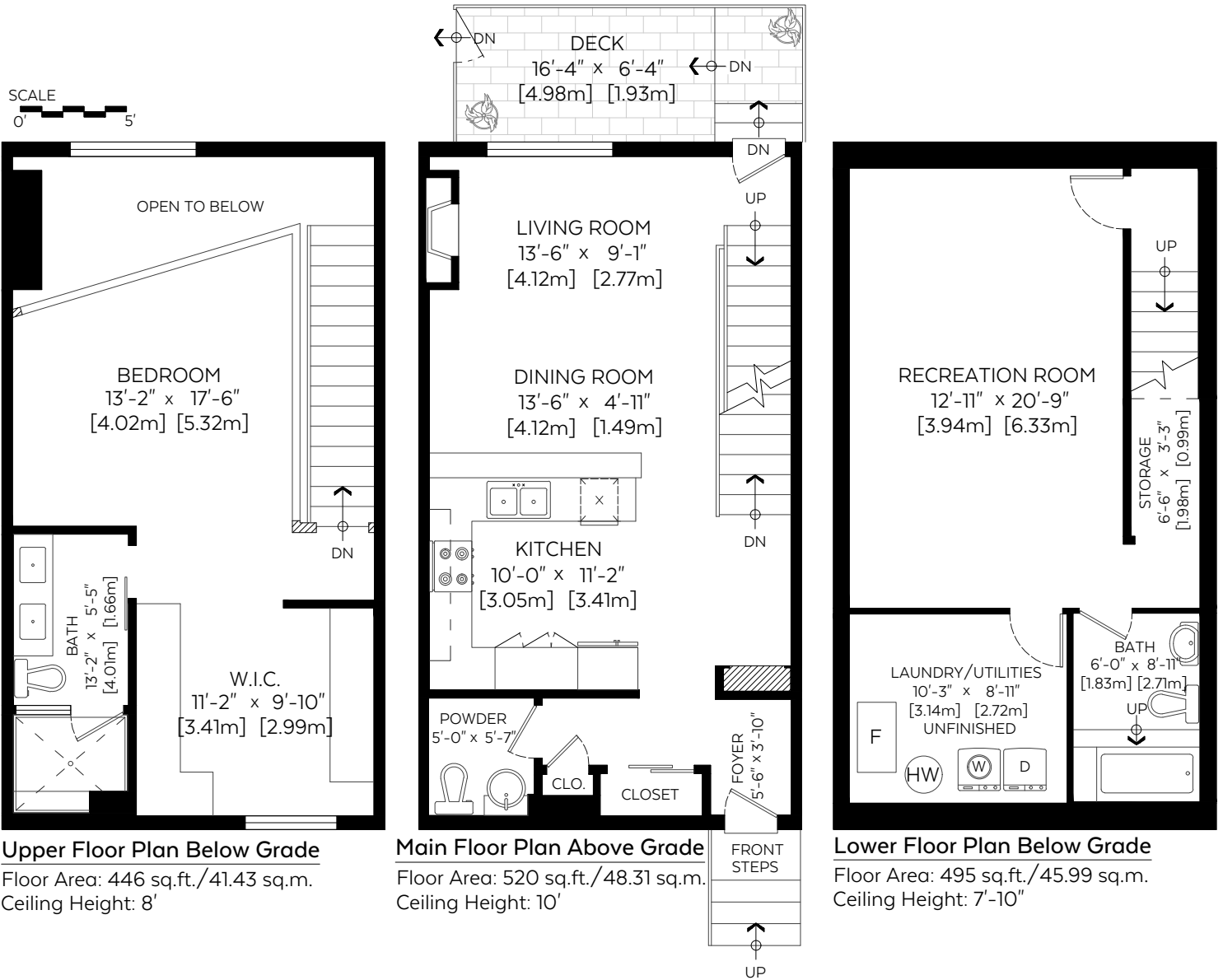


Main Floor:	520 sq.ft.	48.31 sq.m.
Upper Floor:	446 sq.ft.	41.43 sq.m.
RMS Total (Above Grd.):	966 sq.ft.	89.74 sq.m.
Lower Floor (Below Grd.):	495 sq.ft.	45.99 sq.m.
Open To Below:	74 sq.ft.	6.87 sq.m.

Auxiliary Area

Deck:	104 sq.ft.	9.66 sq.m.
Front Steps:	23 sq.ft.	2.14 sq.m.



Measured on: Sept. 5, 2018

Measurements and Floorplans are certified, guaranteed and insured.

The floor plan is not suitable for architectural/construction, square footage-method RMS standards used & is covered under E&O. © Excelsior Measuring Inc. 2018. All rights reserved for Excelsior Measuring Inc. Users shall not publish and distribute such material (in whole or in part) and/or incorporate it in other works in any form.

*RMS area calculated using interior perimeter walls (paint to paint) in accordance with RMS principle 4.



NORTH