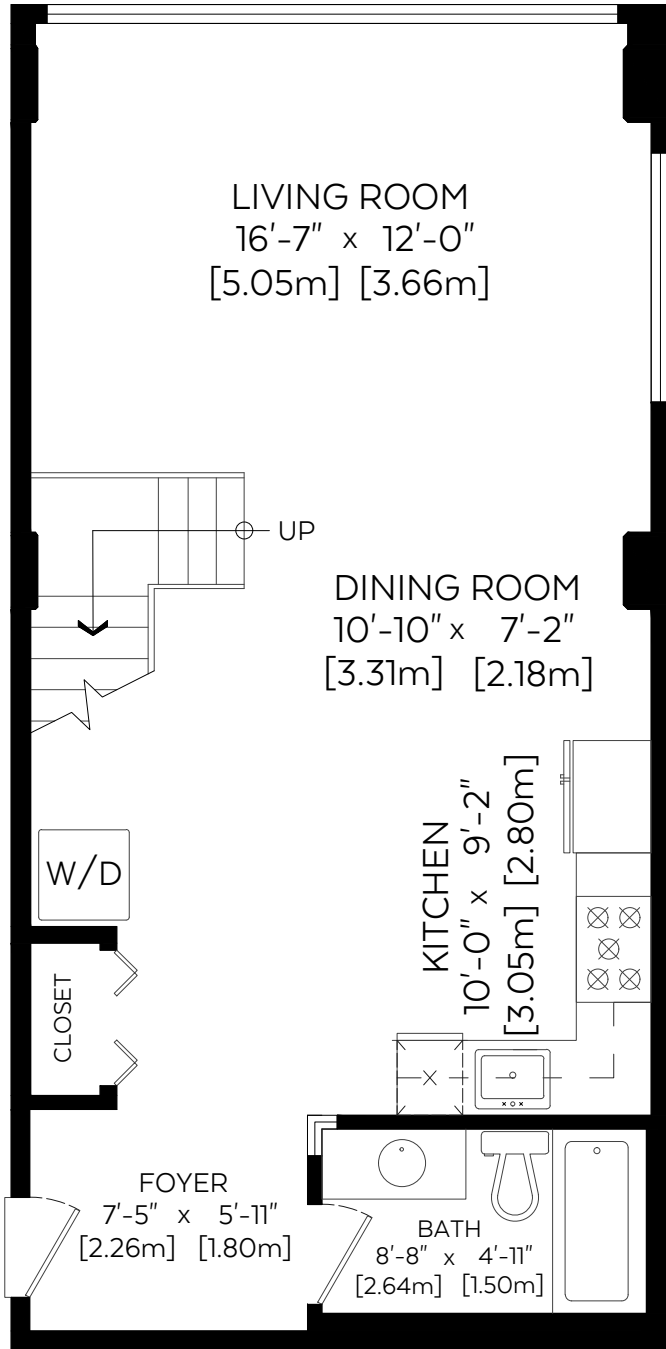


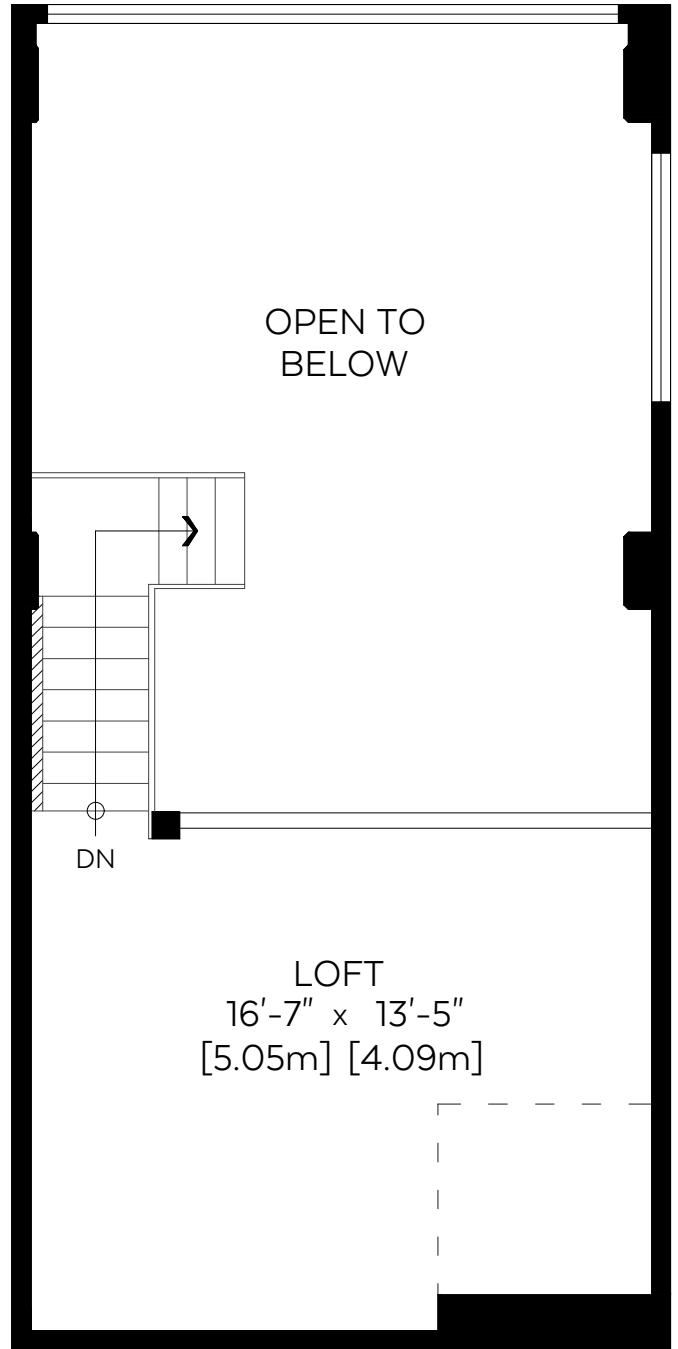
Main Floor:	569 sq.ft.	52.86 sq.m.
Upper Floor:	260 sq.ft.	24.15 sq.m.
<b>RMS Total (Above Grd.):</b>	<b>829 sq.ft.</b>	<b>77.02 sq.m.</b>
Open To Below:	308 sq.ft.	28.61 sq.m.

SCALE



Main Floor Plan(Above Grd.)

Floor Area: 569 sq.ft./52.86 sq.m.



Upper Floor Plan(Above Grd.)

Floor Area: 260 sq.ft./24.15 sq.m.



Measured on: April 2, 2018

The floor plan is not suitable for architectural/construction, square footage-method RMS standards used & is covered under E&O. © Excelsior Measuring Inc. 2017. All rights reserved for Excelsior Measuring Inc. Users shall not publish and distribute such material (in whole or in part) and/or incorporate it in other works in any form. \*RMS area calculated using interior perimeter walls(point to point) in accordance with RMS principle 4.



NORTH