

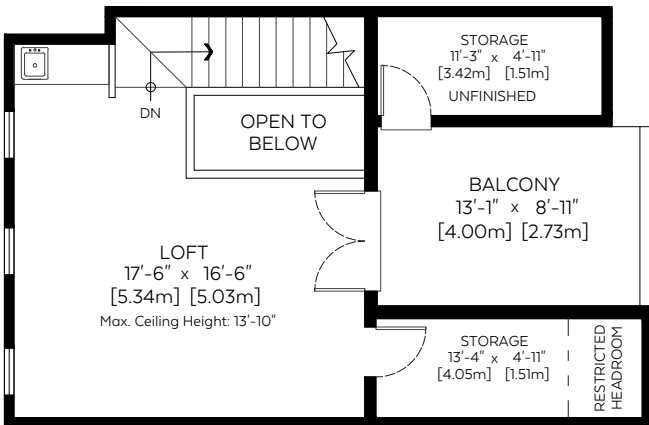
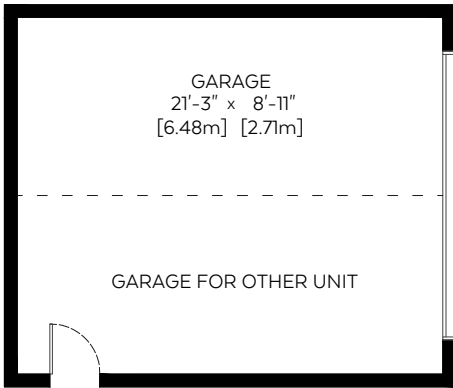
Main Floor:	569 sq.ft.	52.86 sq.m.
Upper Floor:	627 sq.ft.	58.25 sq.m.
Top Floor:	362 sq.ft.	33.63 sq.m.

RMS Total (Above Grd.): 1,558 sq.ft. 144.74 sq.m.

Lower Floor (Below Grd.):	540 sq.ft.	50.17 sq.m.
Restricted H.R.:	18 sq.ft.	1.67 sq.m.
Open To Below:	32 sq.ft.	2.97 sq.m.

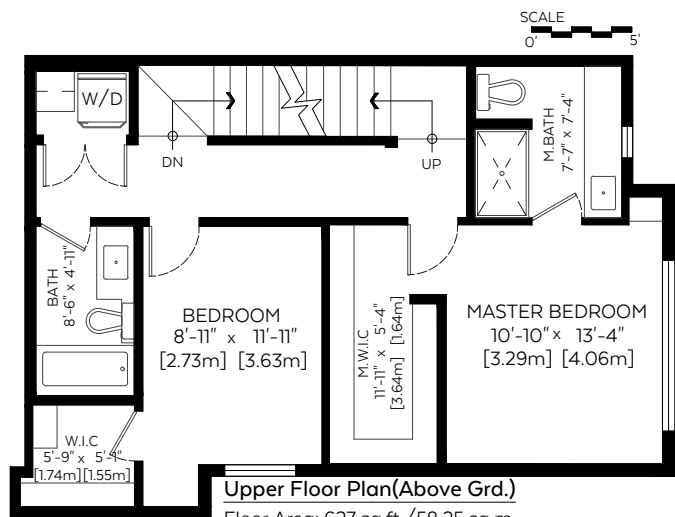
Auxiliary Area

Garage:	189 sq.ft.	17.56 sq.m.
Deck:	104 sq.ft.	9.66 sq.m.
Balcony:	118 sq.ft.	10.96 sq.m.
Storage:	55 sq.ft.	5.11 sq.m.



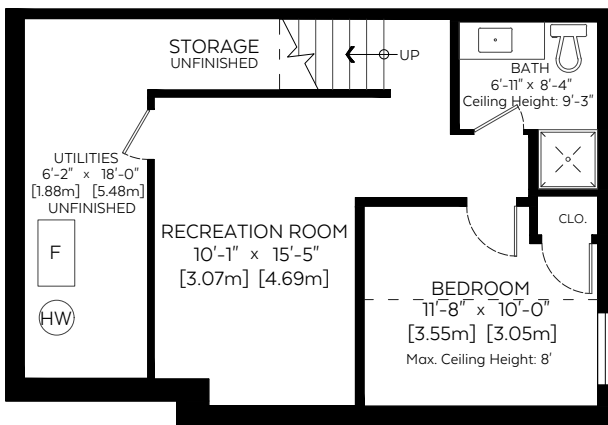
Top Floor Plan(Above Grd.)

Floor Area: 362 sq.ft./33.63 sq.m.
Ceiling Height : 8'-2"



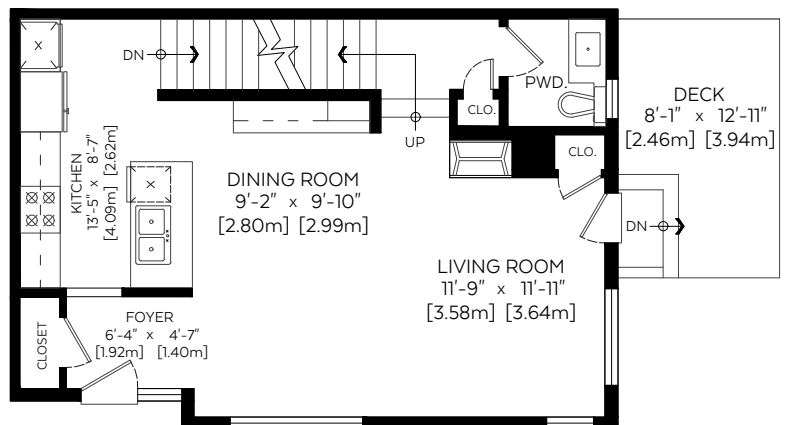
Upper Floor Plan(Above Grd.)

Floor Area: 627 sq.ft./58.25 sq.m.
Ceiling Height : 9'



Lower Floor Plan(Below Grd.)

Floor Area: 540 sq.ft./50.17 sq.m.
Ceiling Height : 7'



Main Floor Plan(Above Grd.)

Floor Area: 569 sq.ft./52.86 sq.m.
Ceiling Height : 9'



Measured on: May 15, 2018

The floor plan is not suitable for architectural/construction, square footage-method RMS standards used & is covered under E&O. © Excelsior Measuring Inc. 2018. All rights reserved for Excelsior Measuring Inc. Users shall not publish and distribute such material (in whole or in part) and/or incorporate it in other works in any form. *RMS area calculated using interior perimeter walls(point to point) in accordance with RMS principle 4.



NORTH