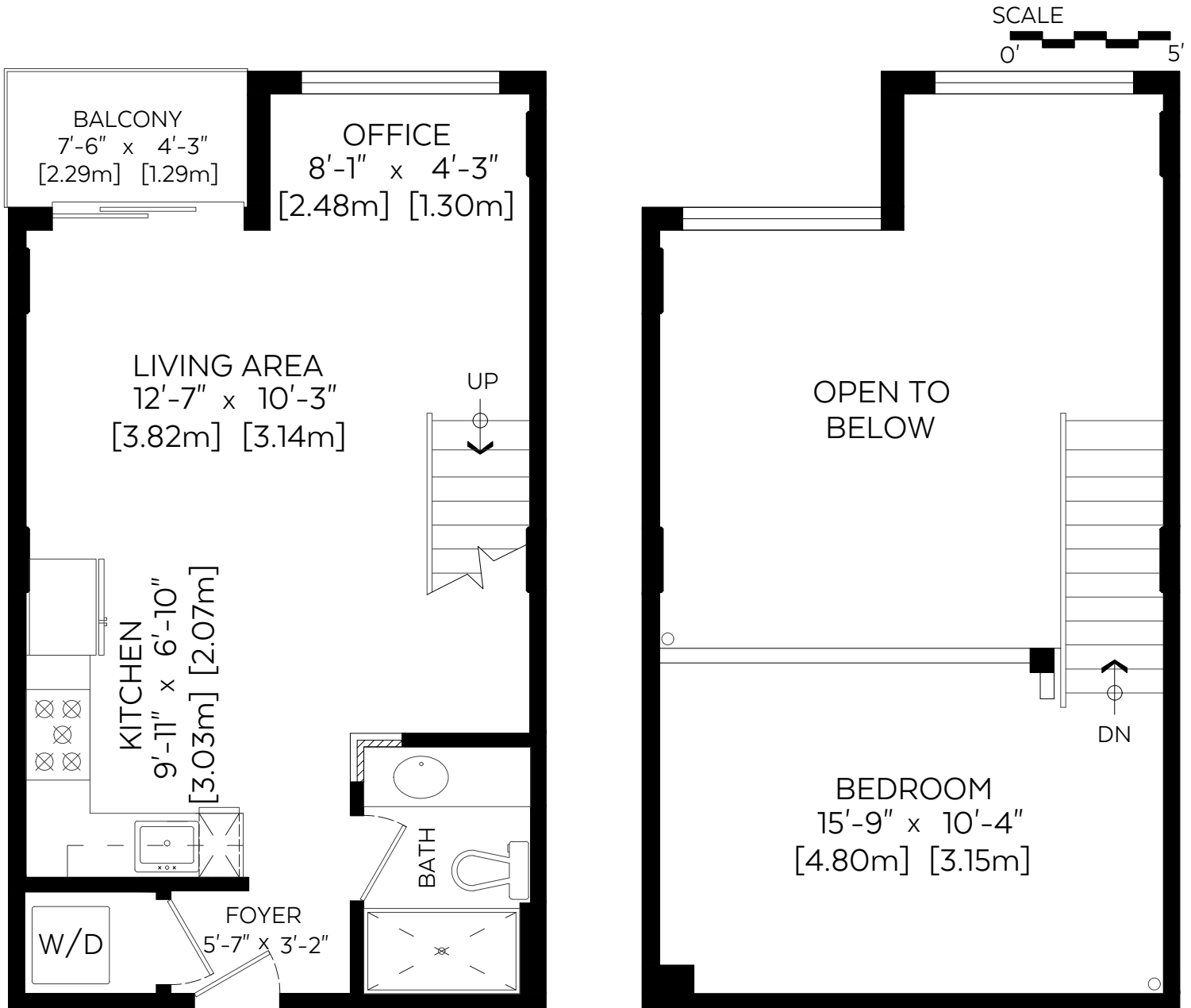


Main Floor:	409 sq.ft.	38.00 sq.m.
Upper Floor:	192 sq.ft.	17.84 sq.m.
<b>RMS Total :</b>	<b>601 sq.ft.</b>	<b>55.83 sq.m.</b>
Open To Below:	217 sq.ft.	20.16 sq.m.



Main Floor Plan(Above Grd.)  
Floor Area: 409 sq.ft./38.00 sq.m.

Upper Floor Plan(Above Grd.)  
Floor Area: 192 sq.ft./17.84 sq.m.

Measured on: Feb. 6, 2018

The floor plan is not suitable for architectural/construction, square footage-method RMS standards used & is covered under E&O. © Excelsior Measuring Inc. 2017. All rights reserved for Excelsior Measuring Inc. Users shall not publish and distribute such material (in whole or in part) and/or incorporate it in other works in any form. \*RMS area calculated using interior perimeter walls (paint to paint) in accordance with RMS principle 4.



NORTH