

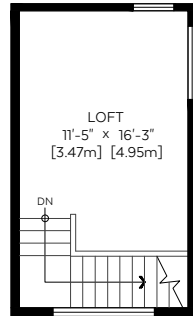
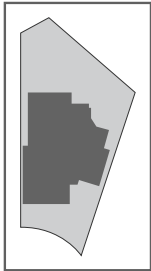
Main Floor:	1,335 sq.ft.	124.02 sq.m.
Upper Floor:	1,222 sq.ft.	113.53 sq.m.
Top Floor:	265 sq.ft.	24.62 sq.m.

RMS Total (Above Grd.): 2,822 sq.ft. 262.17 sq.m.

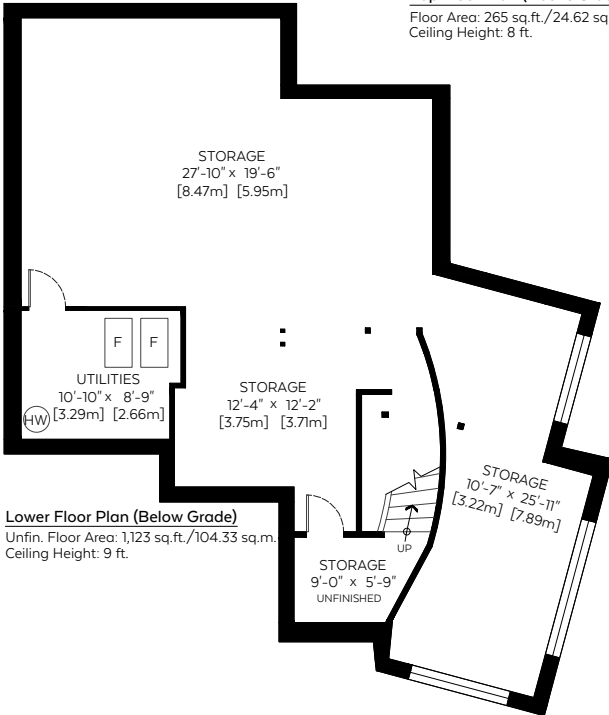
Unfin. Lower Floor (Below Grd.):	1,123 sq.ft.	104.33 sq.m.
Open To Below:	54 sq.ft.	5.02 sq.m.

Auxiliary Area

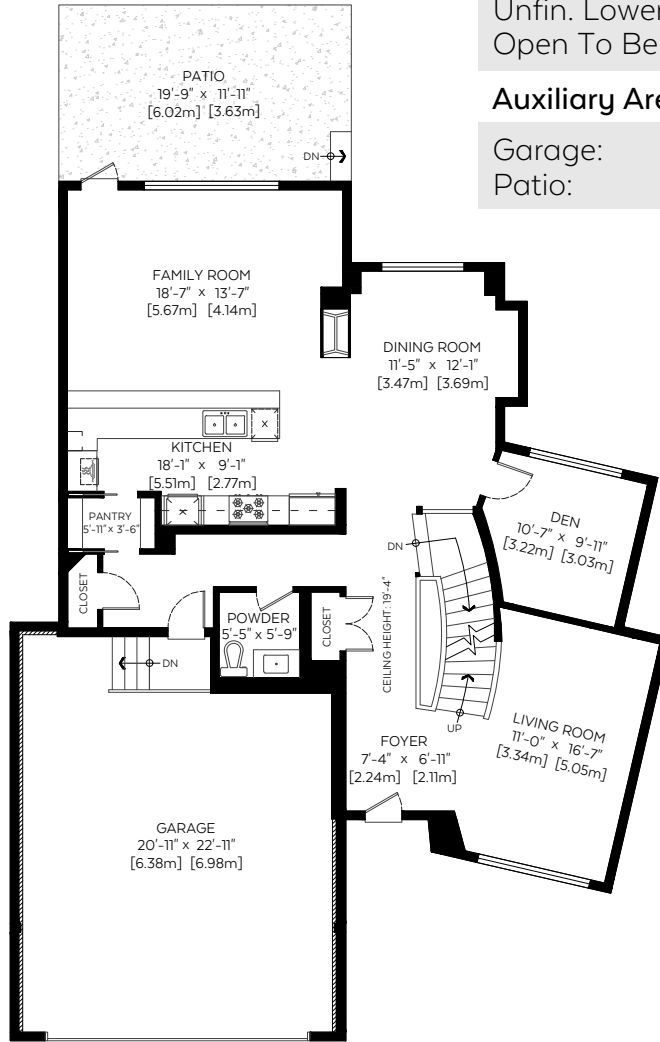
Garage:	528 sq.ft.	49.05 sq.m.
Patio:	235 sq.ft.	21.83 sq.m.



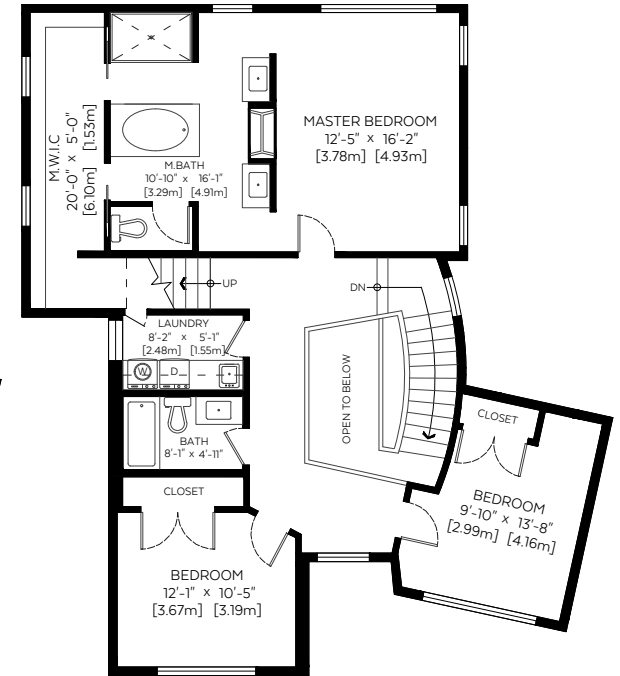
Top Floor Plan (Above Grade)
Floor Area: 265 sq.ft./24.62 sq.m.
Ceiling Height: 8 ft.



Lower Floor Plan (Below Grade)
Unfin. Floor Area: 1,123 sq.ft./104.33 sq.m.
Ceiling Height: 9 ft.



Main Floor Plan (Above Grade)
Floor Area: 1,335 sq.ft./124.02 sq.m.
Ceiling Height: 9 ft.



Upper Floor Plan (Above Grade)
Floor Area: 1,222 sq.ft./113.53 sq.m.
Ceiling Height: 9 ft.

Measured on: Nov. 9, 2018

Measurements and Floorplans are certified, guaranteed and insured.

The floor plan is not suitable for architectural/construction, square footage-method RMS standards used & is covered under E.O. © Excelsior Measuring Inc. 2018. All rights reserved for Excelsior Measuring Inc. Users shall not publish and distribute such material (in whole or in part) and/or incorporate it in other works in any form.

*Exterior wall thickness extrapolated from thickness of exterior door and/or window casings in accordance with RMS principle 3.
*Below Grade area calculated using interior perimeter walls (paint to paint).



NORTH

