

5602 5th Street SW, Calgary, A.B.

Main Floor: 819 sq.ft. 76.09 sq.m.
Upper Floor: 875 sq.ft. 81.29 sq.m.

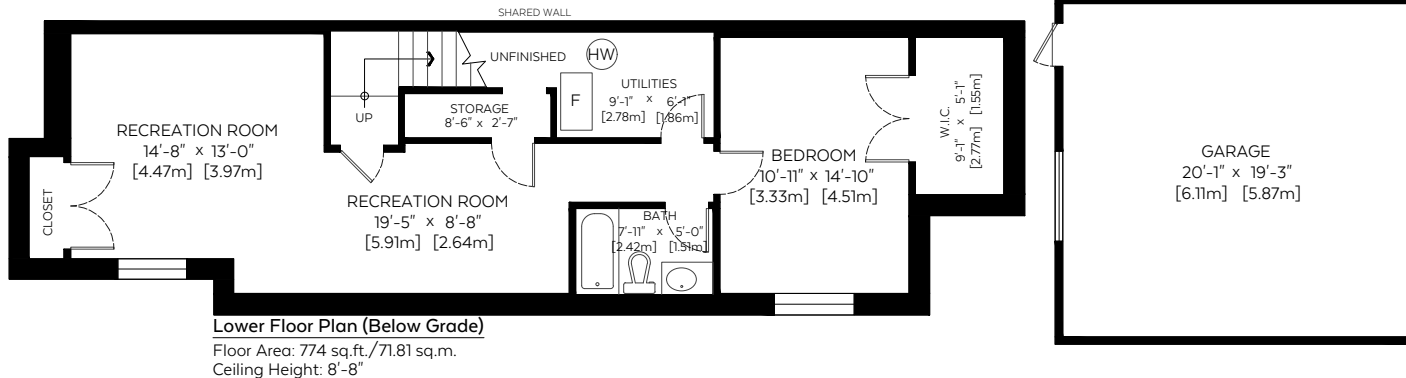
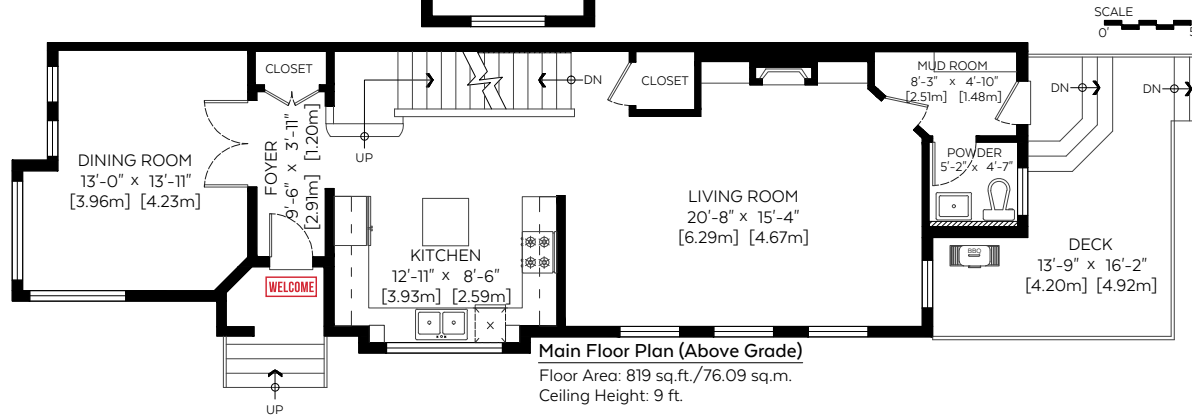
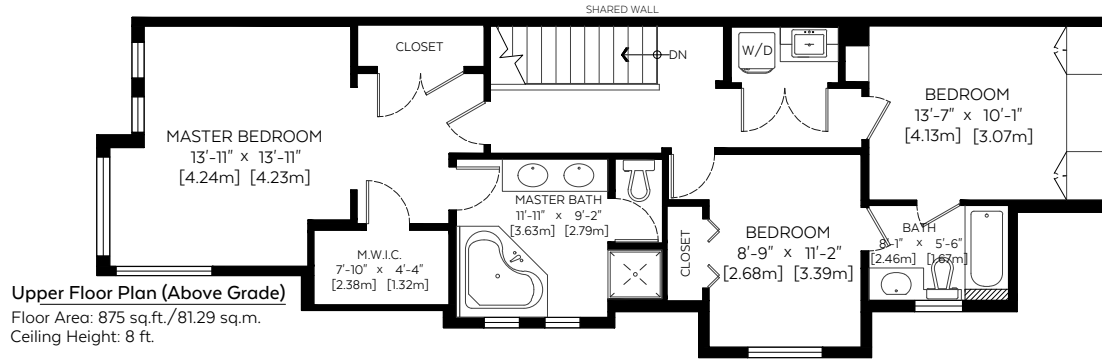
RMS Total (Above Grd.): 1,694 sq.ft. 157.38 sq.m.

Lower Floor (Below Grd.): 773 sq.ft. 71.81 sq.m.

Auxiliary Area

Garage: 386 sq.ft. 35.86 sq.m.

Deck: 136 sq.ft. 12.63 sq.m.



Measured on: April 29, 2019

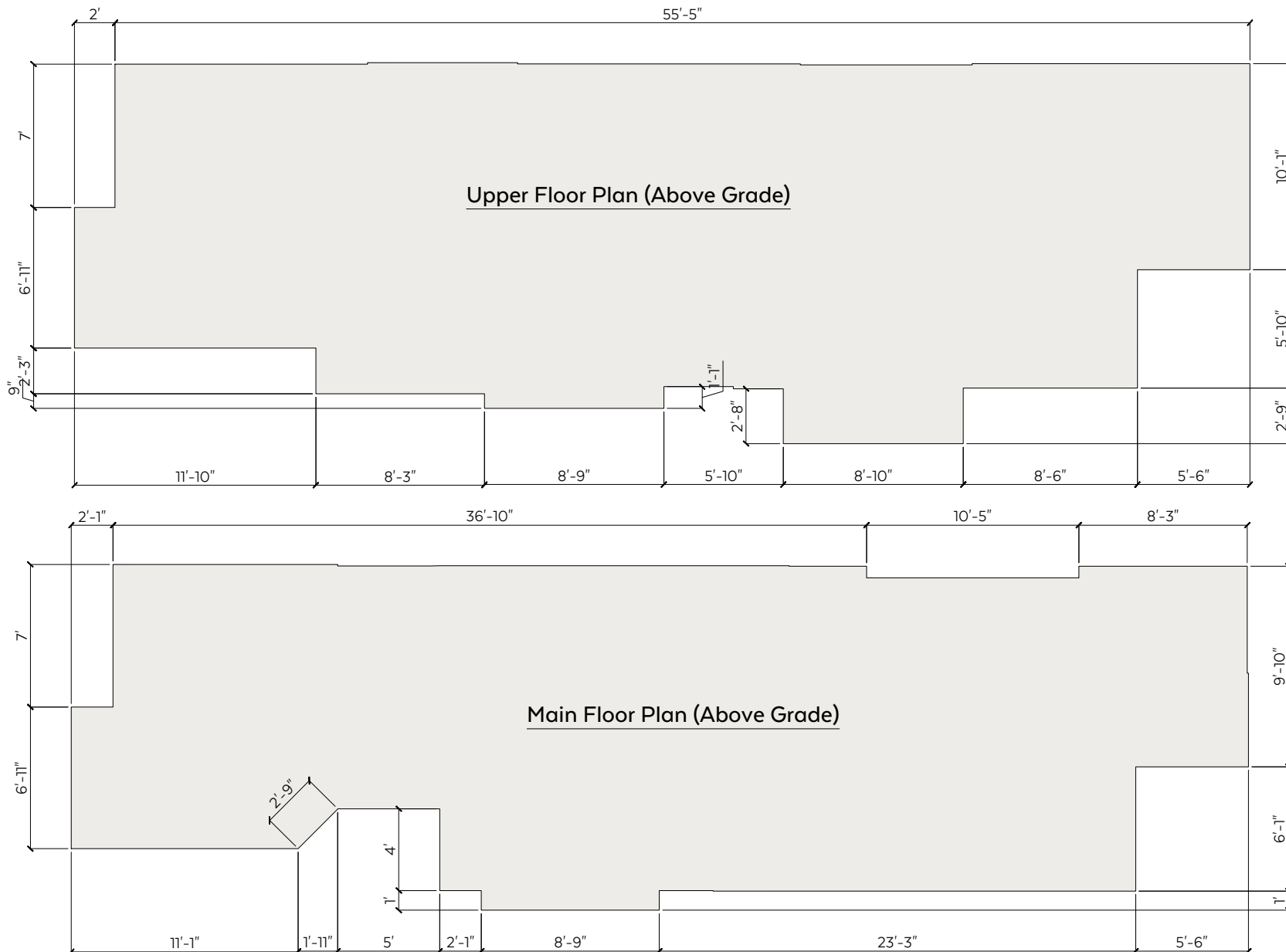
Measurements and Floorplans are certified, guaranteed and insured.

The floor plan is not suitable for architectural/construction, square footage-method RMS standards used & is covered under E&O. © Excelsior Measuring Inc. 2019. All rights reserved for Excelsior Measuring Inc. Users shall not publish and distribute such material (in whole or in part) and/or incorporate it in other works in any form.

*RMS area calculated using interior perimeter walls(point to point) in accordance with RMS principle 4.



NORTH



Measurements and Floorplans are certified, guaranteed and insured.

**There will be a small discrepancy in our sqft found in AutoCAD vs sqft found by adding the wall lengths together. This is due to rounding. The wall lengths on Perimeter Outlines are rounded up to the nearest whole number, whereas the sqft found in AutoCAD calculates from a higher decimal.

The floor plan is not suitable for architectural/construction, square footage-method RMS standards used & is covered under E&O. © Excelsior Measuring Inc. 2019. All rights reserved for Excelsior Measuring Inc. Users shall not publish and distribute such material (in whole or in part) and/or incorporate it in other works in any form.

*RMS area calculated using interior perimeter walls(point to point) in accordance with RMS principle 4.

