



403.264.8086
sayhello@calgarylofts.com
www.calgarylofts.com

#108-1117 1 Street SW, Calgary, A.B.

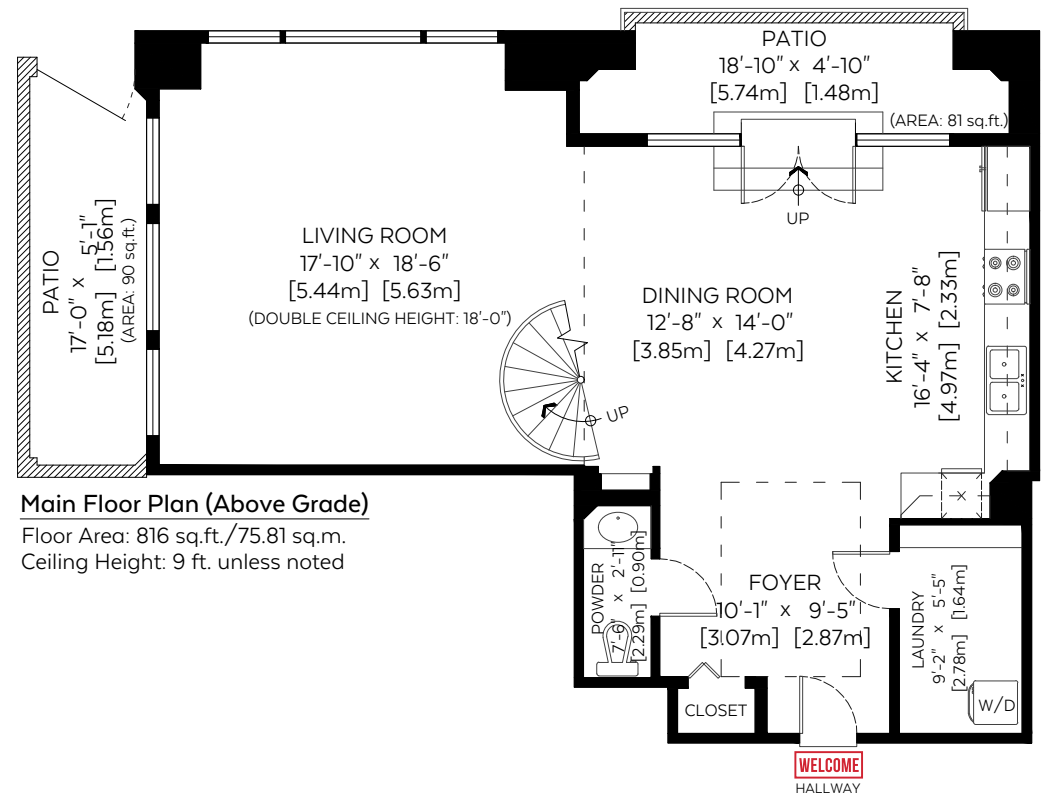
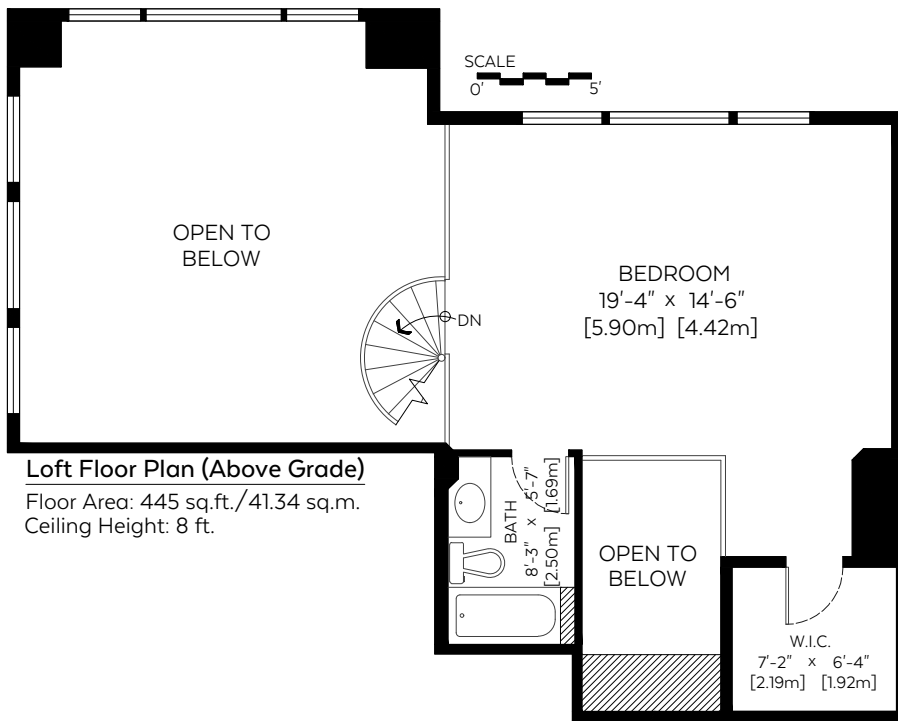
Main Floor: 816 sq.ft. 75.81 sq.m.
Loft Floor: 445 sq.ft. 41.34 sq.m.

RMS Total (Above Grd.): 1,261 sq.ft. 117.15 sq.m.

Open To Below: 362 sq.ft. 33.63 sq.m.

Auxiliary Area

Patios: 171 sq.ft. 15.89 sq.m.



Measured on: Feb. 12, 2019

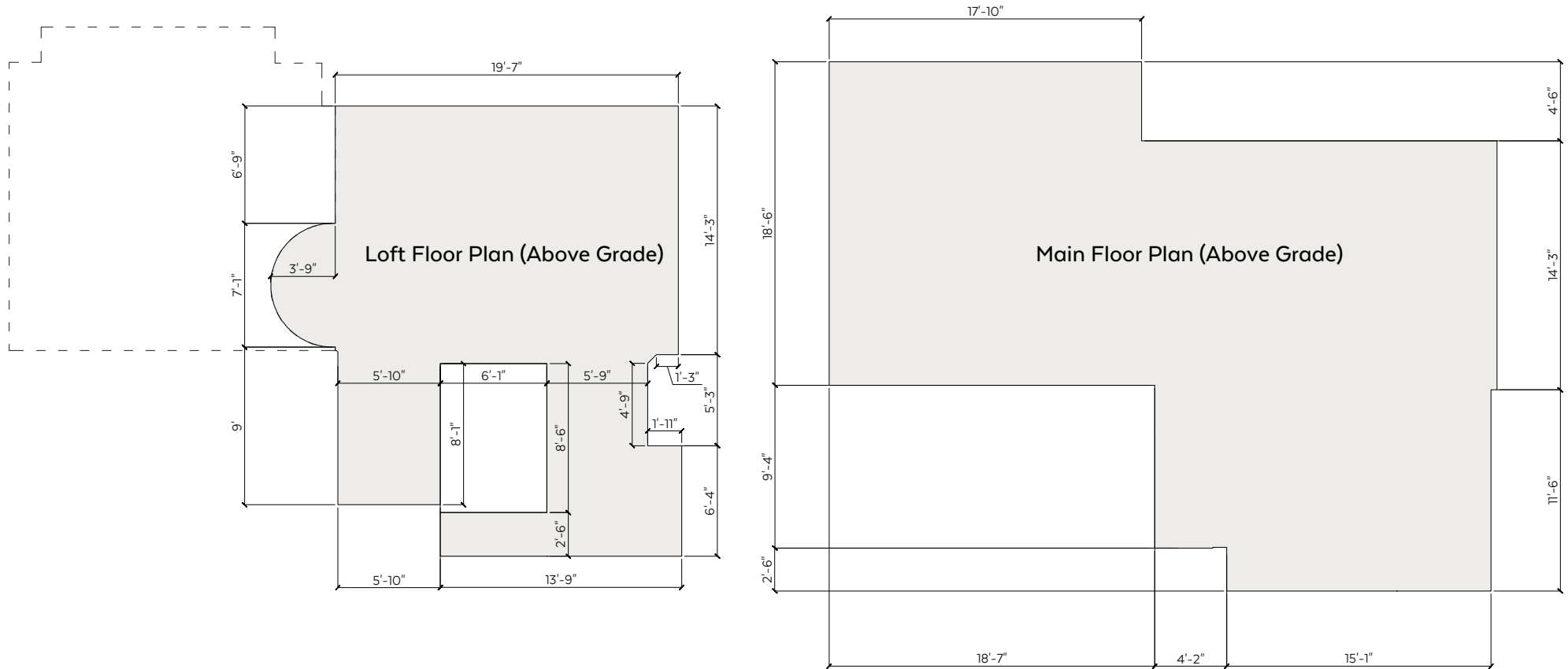
Measurements and Floorplans are certified, guaranteed and insured.

The floor plan is not suitable for architectural/construction, square footage-method RMS standards used & is covered under E&O. © Excelsior Measuring Inc. 2019. All rights reserved for Excelsior Measuring Inc. Users shall not publish and distribute such material (in whole or in part) and/or incorporate it in other works in any form.

*RMS area calculated using interior perimeter walls (paint to paint) in accordance with RMS principle 4.



NORTH



Measurements and Floorplans are certified, guaranteed and insured.

**There will be a small discrepancy in our sqft found in AutoCAD vs sqft found by adding the wall lengths together. This is due to rounding. The wall lengths on Perimeter Outlines are rounded up to the nearest whole number, whereas the sqft found in AutoCAD calculates from a higher decimal.

The floor plan is not suitable for architectural/construction, square footage-method RMS standards used & is covered under E&O. © Excelsior Measuring Inc. 2019. All rights reserved for Excelsior Measuring Inc. Users shall not publish and distribute such material (in whole or in part) and/or incorporate it in other works in any form.

*RMS area calculated using interior perimeter walls(point to point) in accordance with RMS principle 4.

