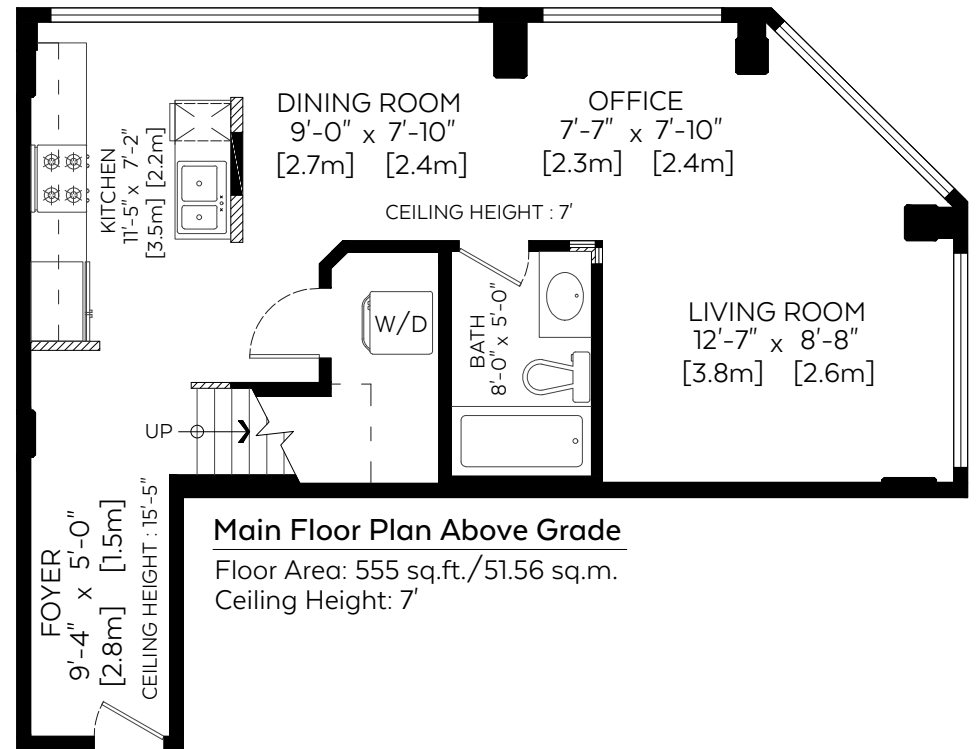
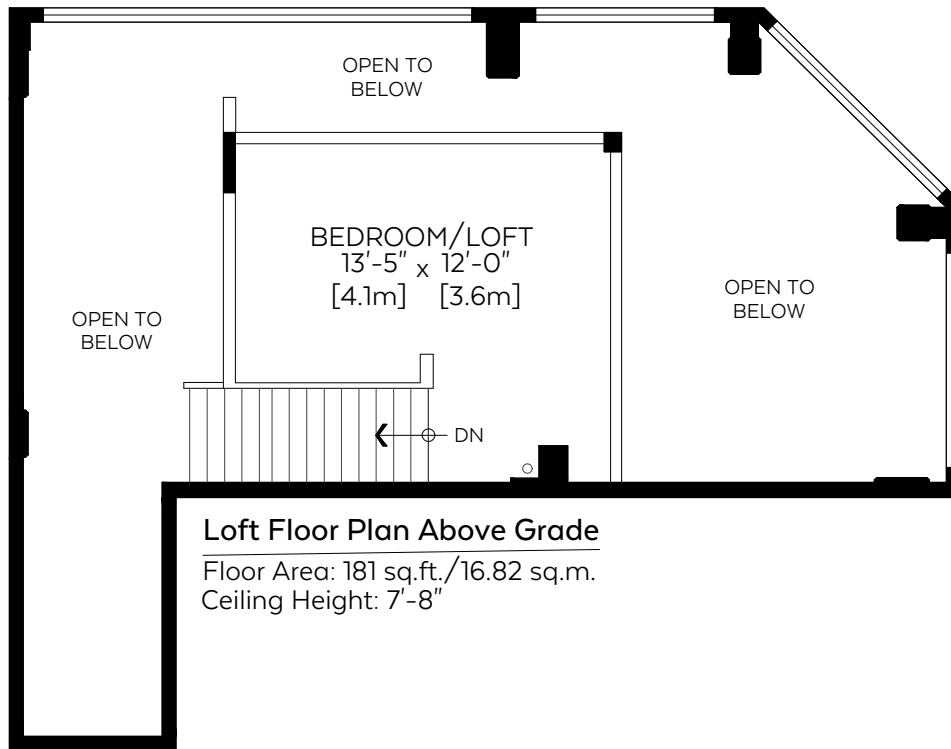


#407-535 8 Avenue SE, Calgary, A.B.

Main Floor:	555 sq.ft.	51.56 sq.m.
Loft Floor:	181 sq.ft.	16.82 sq.m.
RMS Total (Above Grd.):	736 sq.ft.	68.38 sq.m.
Open To Below:	376 sq.ft.	34.93 sq.m.

SCALE
0' 5'



Measured on: July 3, 2018

The floor plan is not suitable for architectural/construction, square footage-method RMS standards used & is covered under E&O. © Excelsior Measuring Inc. 2018. All rights reserved for Excelsior Measuring Inc. Users shall not publish and distribute such material (in whole or in part) and/or incorporate it in other works in any form. *RMS area calculated using interior perimeter walls (paint to paint) in accordance with RMS principle 4.



NORTH