

10 Swift Creek Place, Calgary, A.B.

Main Floor: 2,872 sq.ft. 266.82 sq.m.
Upper Floor: 613 sq.ft. 56.95 sq.m.

RMS Total (Above Grd.): 3,485 sq.ft. 323.76 sq.m.

Lower Floor (Below Grd.): 2,756 sq.ft. 256.04 sq.m.
Storage: 232 sq.ft. 21.55 sq.m.

Auxiliary Area

Main Garage: 878 sq.ft. 81.57 sq.m.
Lower Garage/Sto.: 562 sq.ft. 52.21 sq.m.
Patio: 289 sq.ft. 26.85 sq.m.
Deck: 1,054 sq.ft. 97.92 sq.m.
Balcony: 243 sq.ft. 22.58 sq.m.



Measured on: Mar. 13, 2019

Measurements and Floorplans are certified, guaranteed and insured.

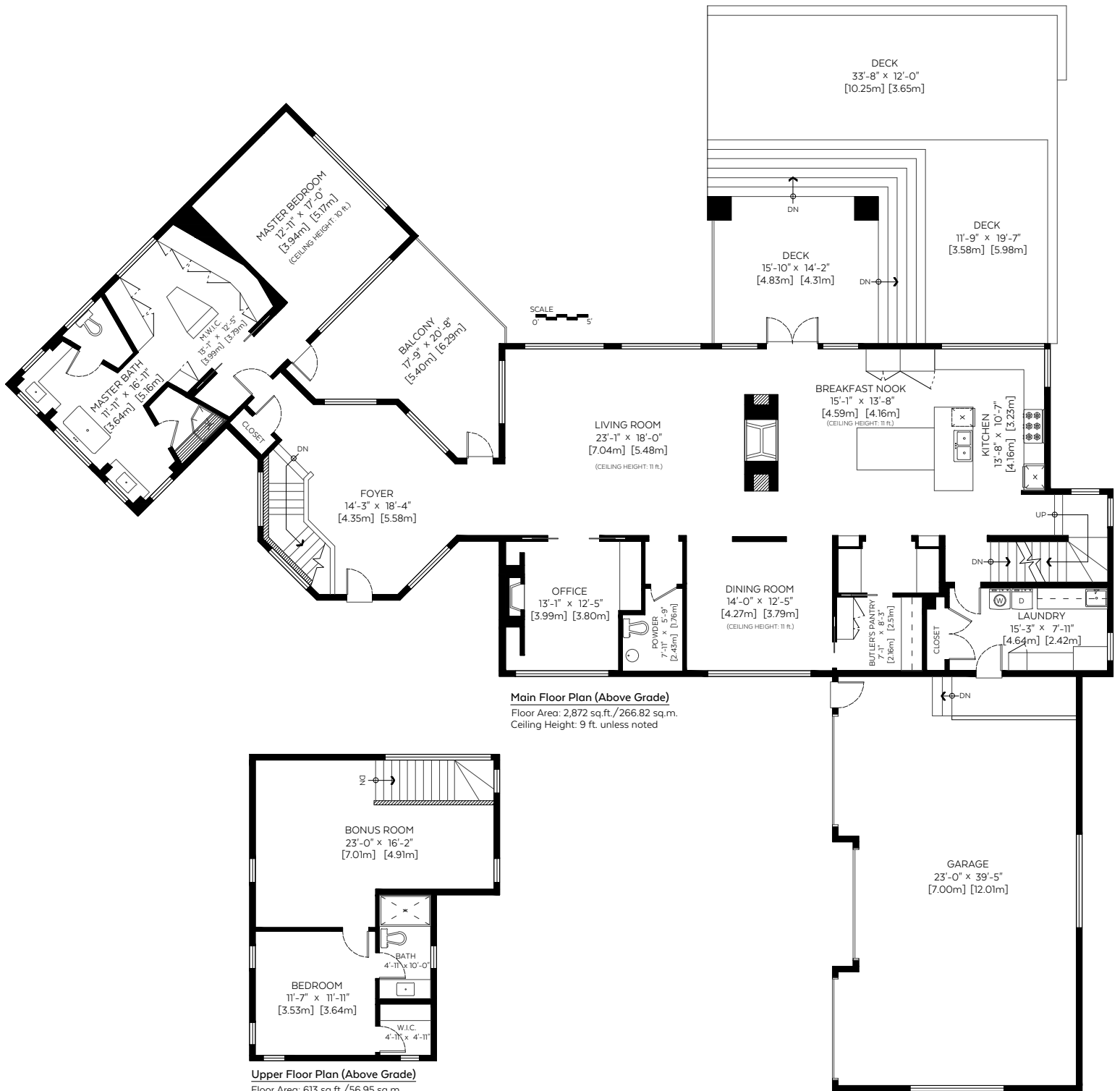
The floor plan is not suitable for architectural/construction, square footage-method RMS standards used & is covered under E&O. © Excelsior Measuring Inc. 2019. All rights reserved for Excelsior Measuring Inc. Users shall not publish and distribute such material (in whole or in part) and/or incorporate it in other works in any form.

*Exterior wall thickness extrapolated from thickness of exterior door and/or window casings in accordance with RMS principle 3.

†Below Grade area calculated using interior perimeter walls (paint to paint).



NORTH



Measured on: Mar. 13, 2019

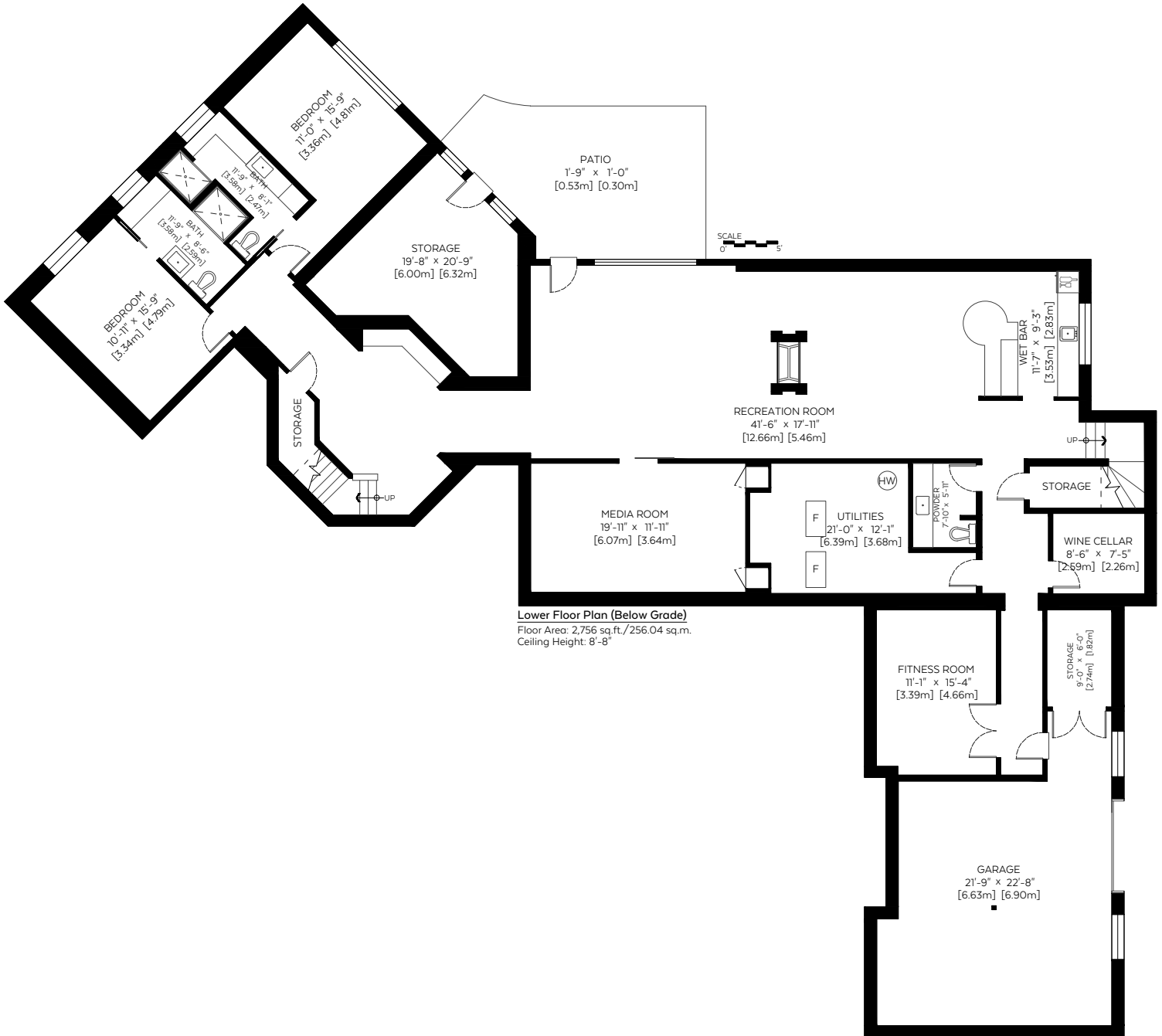
Measurements and Floorplans are certified, guaranteed and insured.

The floor plan is not suitable for architectural/construction, square footage-method RMS standards used & is covered under E&O. © Excelsior Measuring Inc. 2019. All rights reserved for Excelsior Measuring Inc. Users shall not publish and distribute such material (in whole or in part) and/or incorporate it in other works in any form.

*Exterior wall thickness extrapolated from thickness of exterior door and/or window casings in accordance with RMS principle 3.
 *Below Grade area calculated using interior perimeter walls (paint to paint).



NORTH



Measured on: Mar. 13, 2019

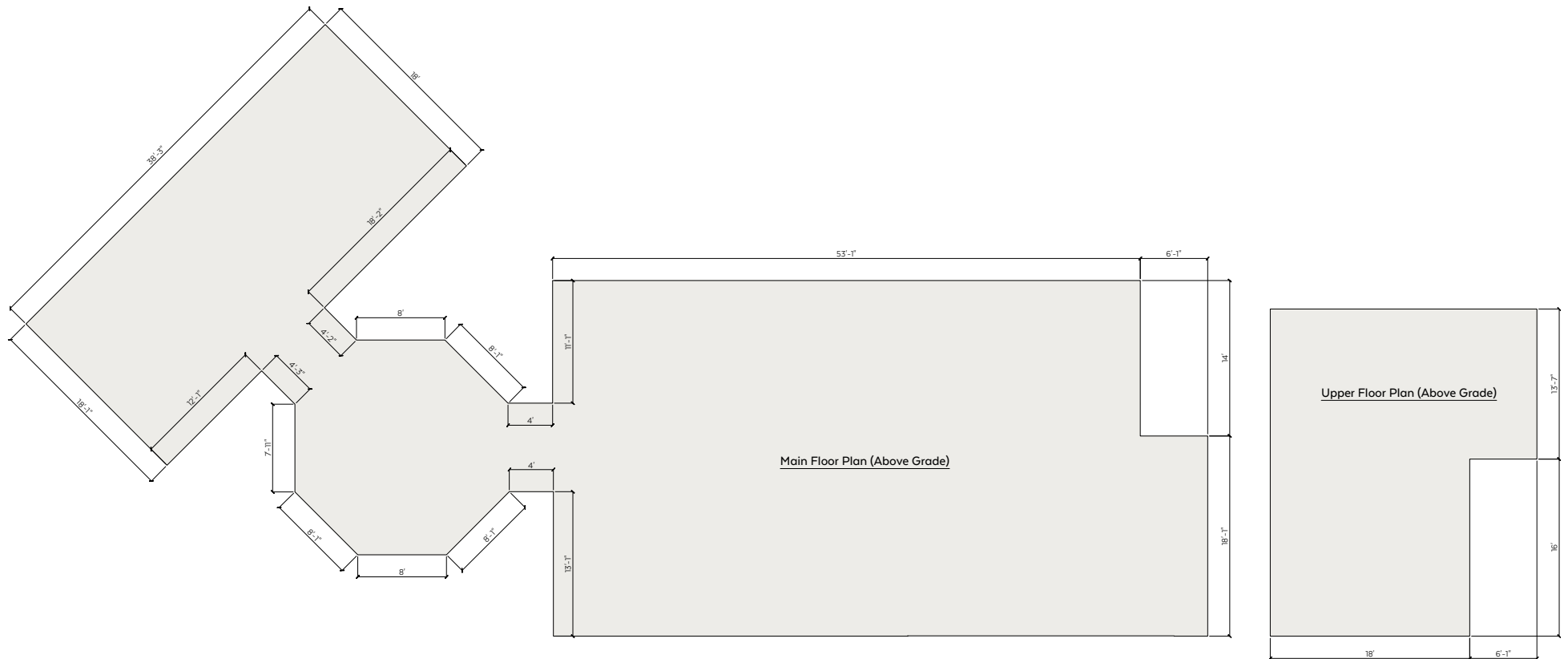
Measurements and Floorplans are certified, guaranteed and insured.

The floor plan is not suitable for architectural/construction, square footage-method RMS standards used & is covered under E&O. © Excelsior Measuring Inc. 2019. All rights reserved for Excelsior Measuring Inc. Users shall not publish and distribute such material (in whole or in part) and/or incorporate it in other works in any form.

*Exterior wall thickness extrapolated from thickness of exterior door and/or window casings in accordance with RMS principle 3.
*Below Grade area calculated using interior perimeter walls (paint to paint).



NORTH



Measurements and Floorplans are certified, guaranteed and insured.

***There will be a small discrepancy in our sqft found in AutoCAD vs sqft found by adding the wall lengths together. This is due to rounding. The wall lengths on Perimeter Outlines are rounded up to the nearest whole number, whereas the sqft found in AutoCAD calculates from a higher decimal.

The floor plan is not suitable for architectural/construction, square footage-method RMS standards used & is covered under E&O. © Excelsior Measuring Inc. 2019. All rights reserved for Excelsior Measuring Inc. Users shall not publish and distribute such material (in whole or in part) and/or incorporate it in other works in any form.

*Exterior wall thickness extrapolated from thickness of exterior door and/or window casings in accordance with RMS principle 3.
 **Below Grade area calculated using interior perimeter walls (paint to paint).

