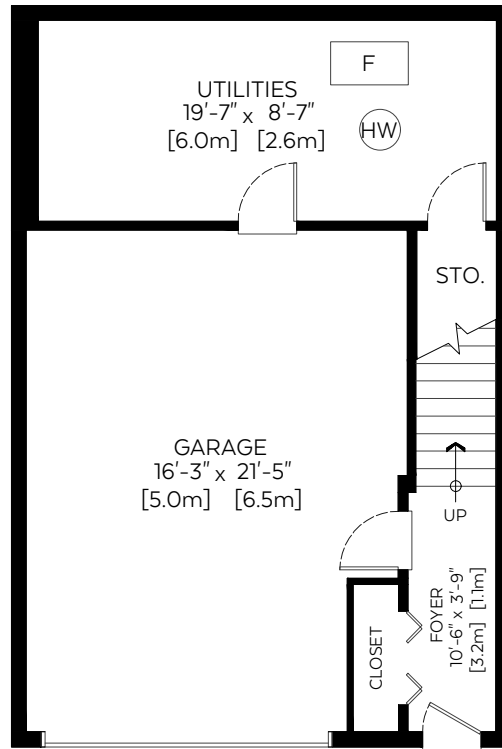


131 38 Avenue SW, Calgary, A.B.

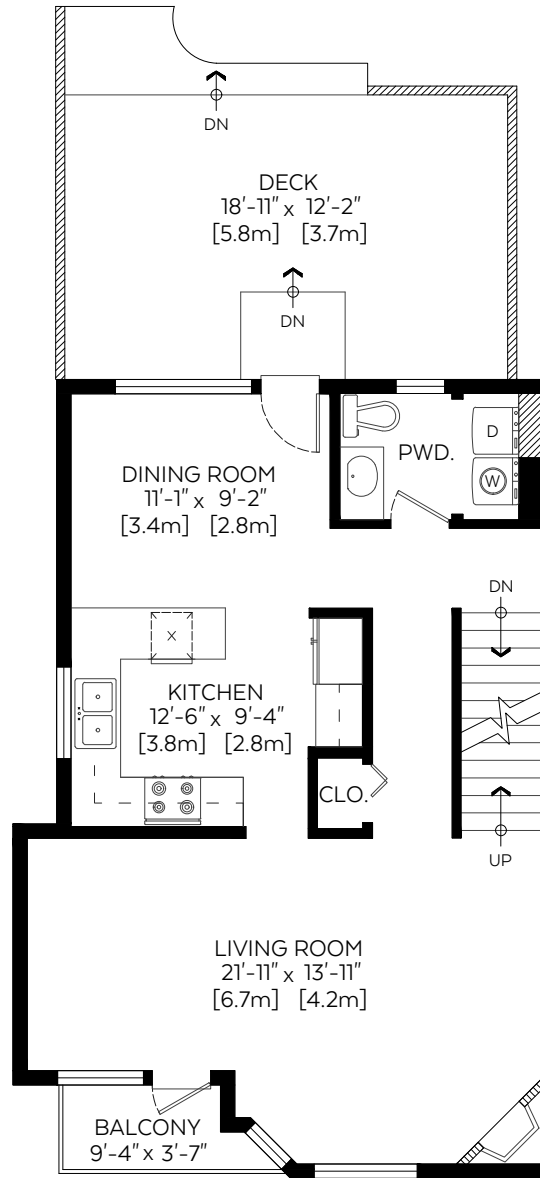
Main Floor:	646 sq.ft.	60.01 sq.m.
Upper Floor:	674 sq.ft.	62.62 sq.m.
Entry Floor:	93 sq.ft.	8.64 sq.m.
RMS Total (Above Grd.):	1,413 sq.ft.	131.27 sq.m.
Utilities:	168 sq.ft.	15.61 sq.m.

Auxiliary Area

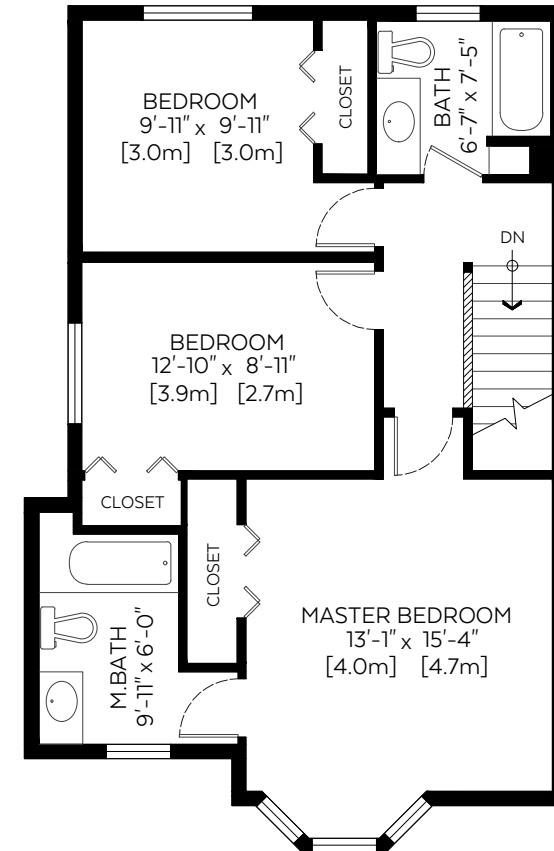
Garage:	331 sq.ft.	30.75 sq.m.
Deck:	247 sq.ft.	22.95 sq.m.
Balcony:	29 sq.ft.	2.69 sq.m.



Entry Floor Plan Above Grade
Floor Area: 93 sq.ft./8.64 sq.m.
Ceiling Height: 8 ft.



Main Floor Plan Above Grade
Floor Area: 646 sq.ft./60.01 sq.m.
Ceiling Height: 8 ft.



Upper Floor Plan Above Grade
Floor Area: 674 sq.ft./62.62 sq.m.
Ceiling Height: 8 ft.

Measured on: July 6, 2018

The floor plan is not suitable for architectural/construction, square footage-method RMS standards used & is covered under E.O. © Excelsior Measuring Inc. 2018. All rights reserved for Excelsior Measuring Inc. Users shall not publish and distribute such material (in whole or in part) and/or incorporate it in other works in any form.
*RMS area calculated using interior perimeter walls(point to point) in accordance with RMS principle 4.



NORTH