

Main Floor:	768 sq.ft.	71.35 sq.m.
Upper Floor:	309 sq.ft.	28.71 sq.m.

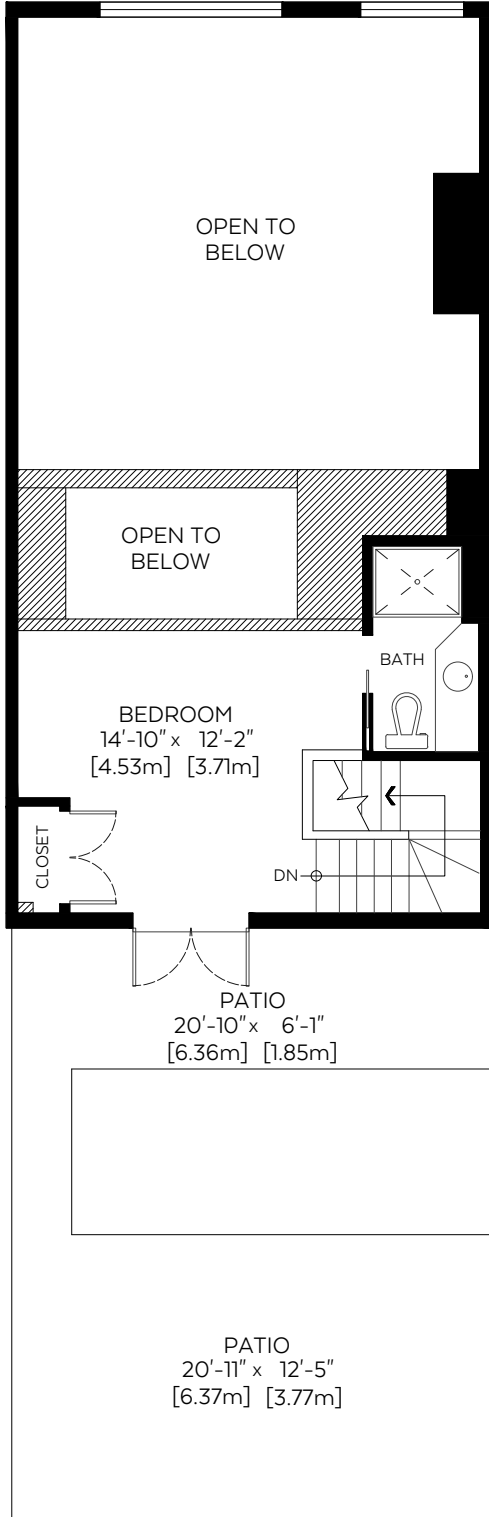
RMS Total(Above Grd.): 1,077 sq.ft. 100.06 sq.m.

**Auxiliary Area**

Patio:	404 sq.ft.	37.53 sq.m.
Open To Below:	452 sq.ft.	41.99 sq.m.

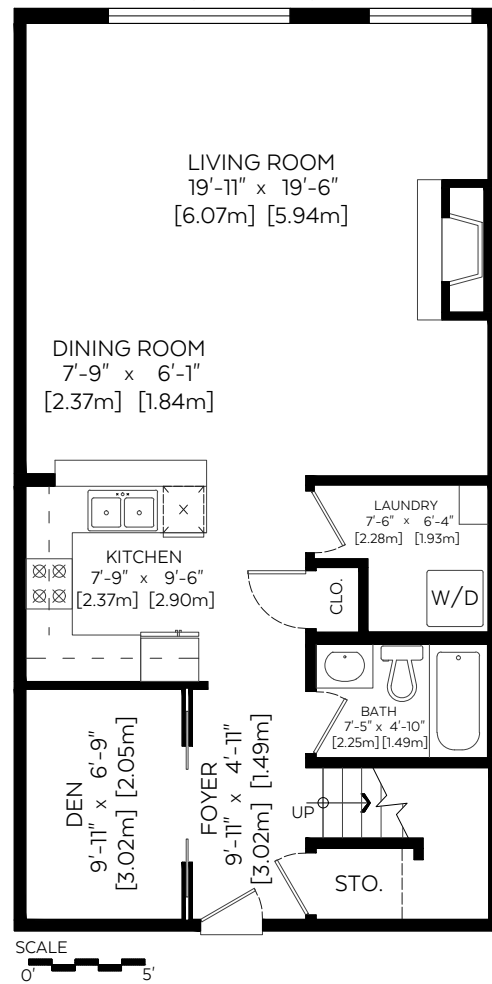
**Upper Floor Plan(Above Grd.)**

Floor Area: 309 sq.ft./28.71 sq.m.



**Main Floor Plan(Above Grd.)**

Floor Area: 768 sq.ft./71.35 sq.m.



Measured on: May. 15, 2017