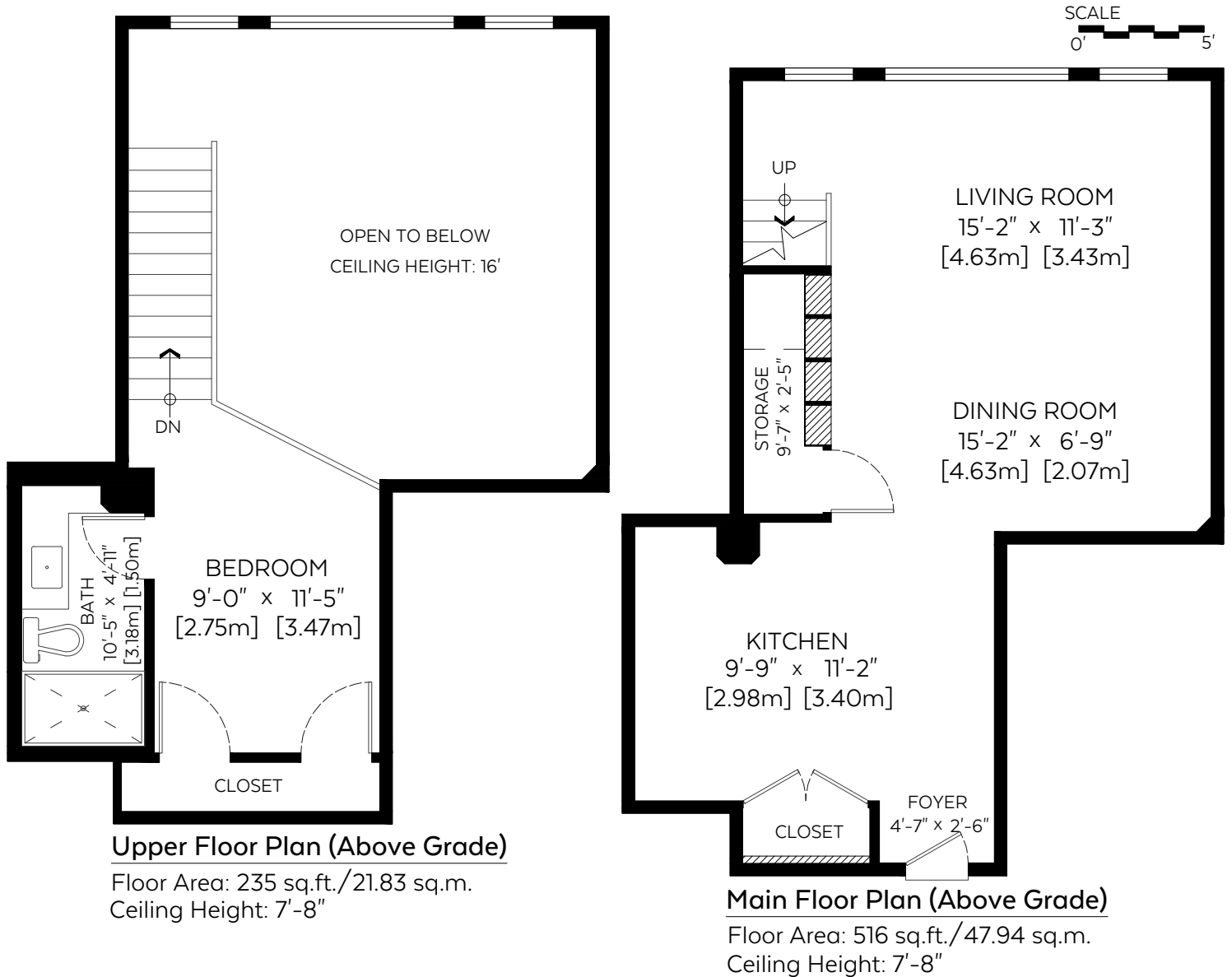


Main Floor:	516 sq.ft.	47.94 sq.m.
Upper Floor:	235 sq.ft.	21.83 sq.m.
RMS Total (Above Grd.):	751 sq.ft.	69.77 sq.m.
Open To Below:	281 sq.ft.	26.11 sq.m.



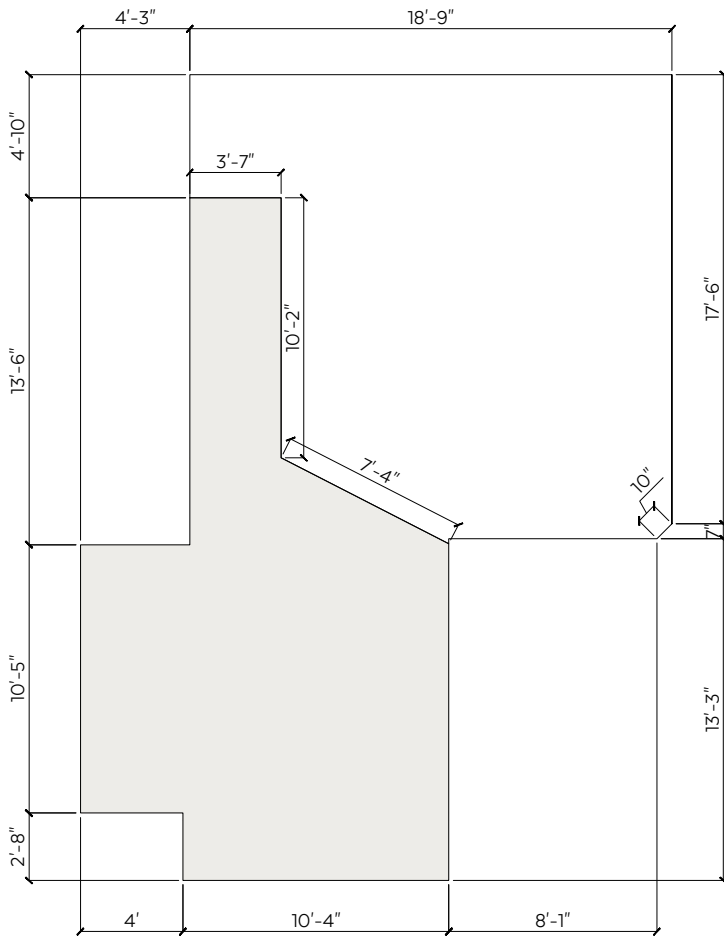
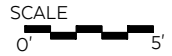
Measured on: Dec. 13, 2018

Measurements and Floorplans are certified, guaranteed and insured.

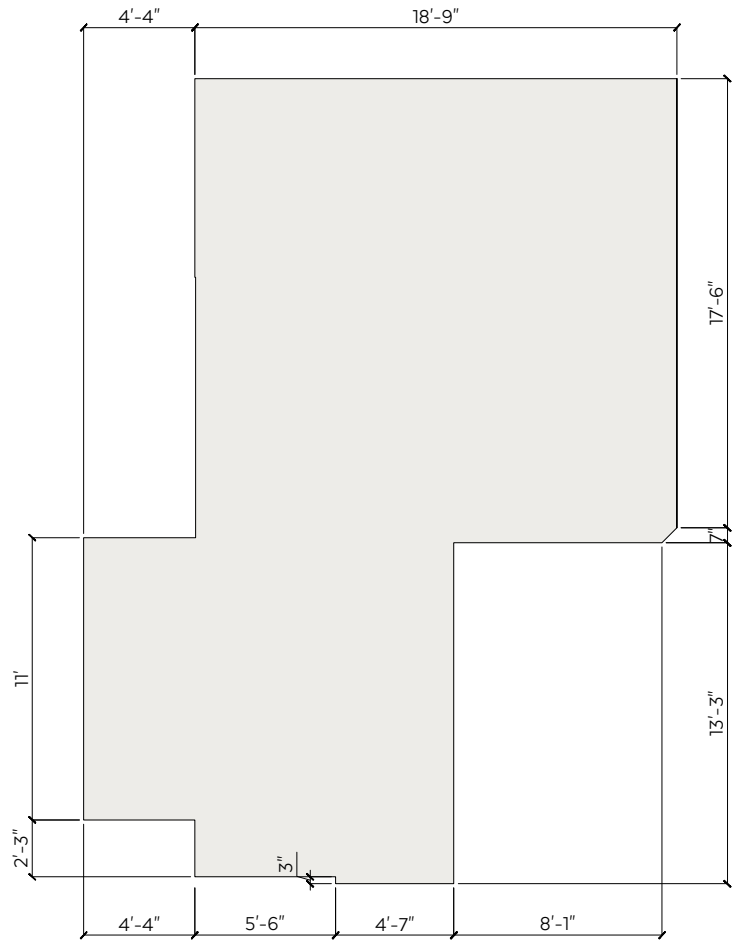
The floor plan is not suitable for architectural/construction, square footage-method RMS standards used & is covered under E&O. © Excelsior Measuring Inc. 2018. All rights reserved for Excelsior Measuring Inc. Users shall not publish and distribute such material (in whole or in part) and/or incorporate it in other works in any form.
*RMS area calculated using interior perimeter walls(point to point) in accordance with RMS principle 4.



NORTH



Upper Floor Plan (Above Grade)



Main Floor Plan (Above Grade)



Measurements and Floorplans are certified, guaranteed and insured.

**There will be a small discrepancy in our sq.ft. found in AutoCAD V.S. sq.ft. found by adding the wall lengths together. This is due to rounding. The wall lengths on Perimeter Outlines are rounded up to the nearest whole number, whereas the sq.ft. found in AutoCAD calculates from a higher decimal.
 The floor plan is not suitable for architectural/construction, square footage-method RMS standards used & is covered under E&O. © Excelsior Measuring Inc. 2018. All rights reserved for Excelsior Measuring Inc. Users shall not publish and distribute such material (in whole or in part) and/or incorporate it in other works in any form.
 *RMS area calculated using interior perimeter walls (paint to paint) in accordance with RMS principle 4.