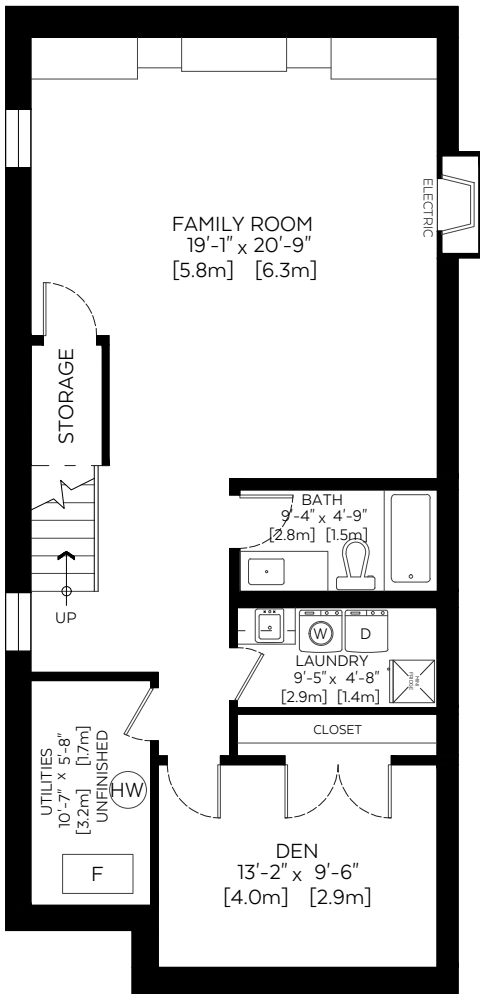
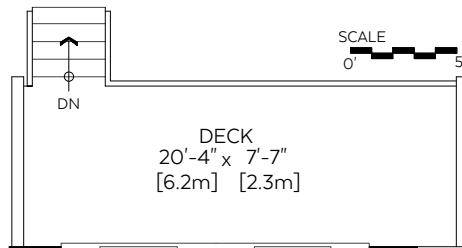
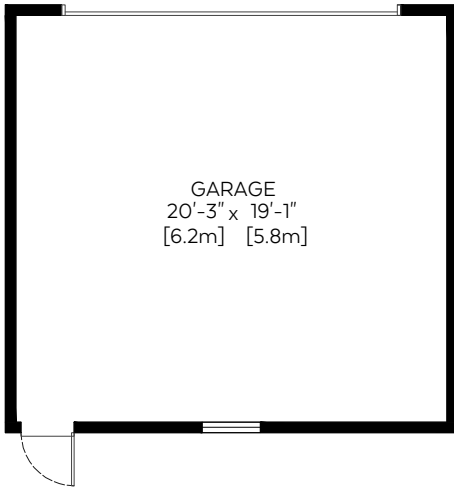


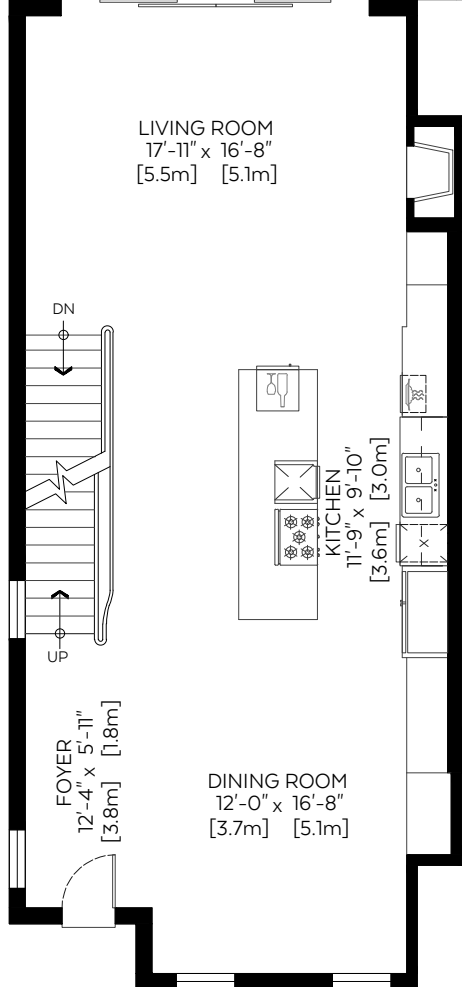
Main Floor:	847 sq.ft.	78.69 sq.m.
Upper Floor:	846 sq.ft.	78.60 sq.m.
<b>RMS Total (Above Grd.):</b>	<b>1,693 sq.ft.</b>	<b>157.28 sq.m.</b>
Lower Floor (Below Grd.):	819 sq.ft.	76.09 sq.m.
Open To Below:	43 sq.ft.	3.99 sq.m.

**Auxiliary Area**

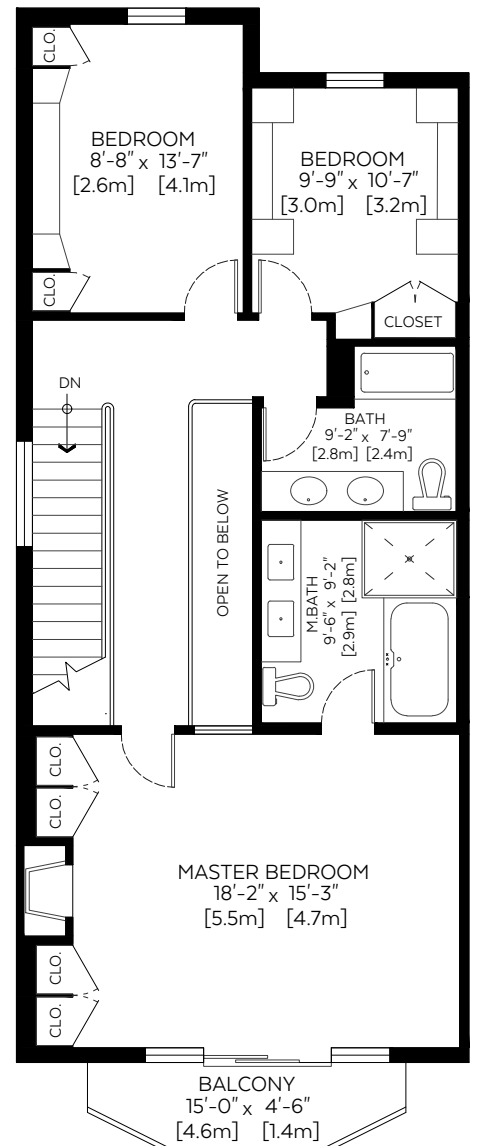
Garage:	388 sq.ft.	36.05 sq.m.
Deck:	154 sq.ft.	14.31 sq.m.
Balcony:	58 sq.ft.	5.39 sq.m.



**Lower Floor Plan Below Grade**  
Floor Area: 819 sq.ft./76.09 sq.m.  
Ceiling Height: 8 ft.



**Main Floor Plan Above Grade**  
Floor Area: 847 sq.ft./78.69 sq.m.  
Ceiling Height: 10 ft.



**Upper Floor Plan Above Grade**  
Floor Area: 846 sq.ft./78.60 sq.m.  
Ceiling Height: 8 ft.

Measured on: June 18, 2018

The floor plan is not suitable for architectural/construction, square footage-method RMS standards used & is covered under E&O. © Excelsior Measuring Inc. 2018. All rights reserved for Excelsior Measuring Inc. Users shall not publish and distribute such material (in whole or in part) and/or incorporate it in other works in any form.

\*Exterior wall thickness extrapolated from thickness of exterior door and/or window casings in accordance with RMS principle 3.  
\*Below Grade area calculated using interior perimeter walls (paint to paint).



**NORTH**