

4518 33 Avenue SW, Calgary, A.B.

Main Floor: 825 sq.ft. 76.64 sq.m.  
Upper Floor: 935 sq.ft. 86.86 sq.m.

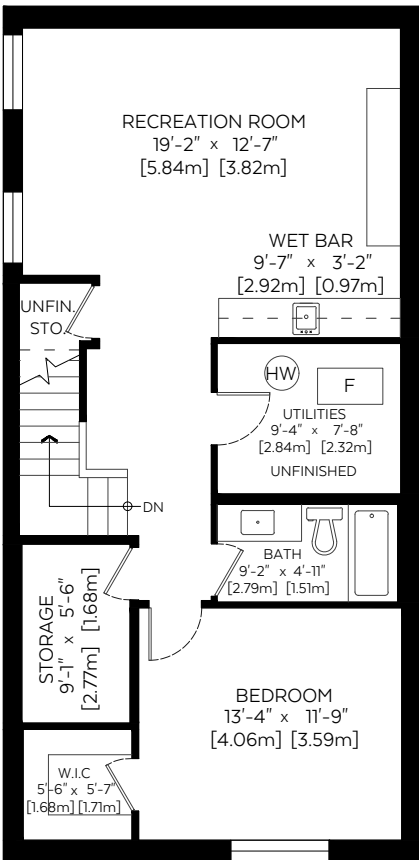
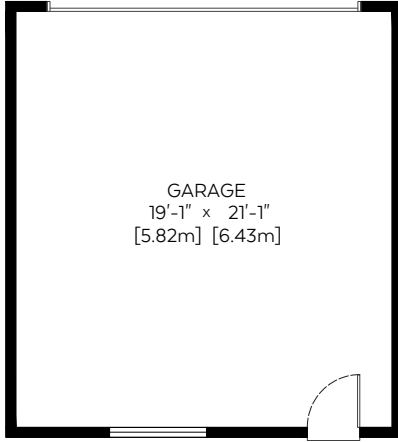
RMS Total (Above Grd.): 1,760 sq.ft. 163.51 sq.m.

Lower Floor (Below Grd.): 792 sq.ft. 73.58 sq.m.

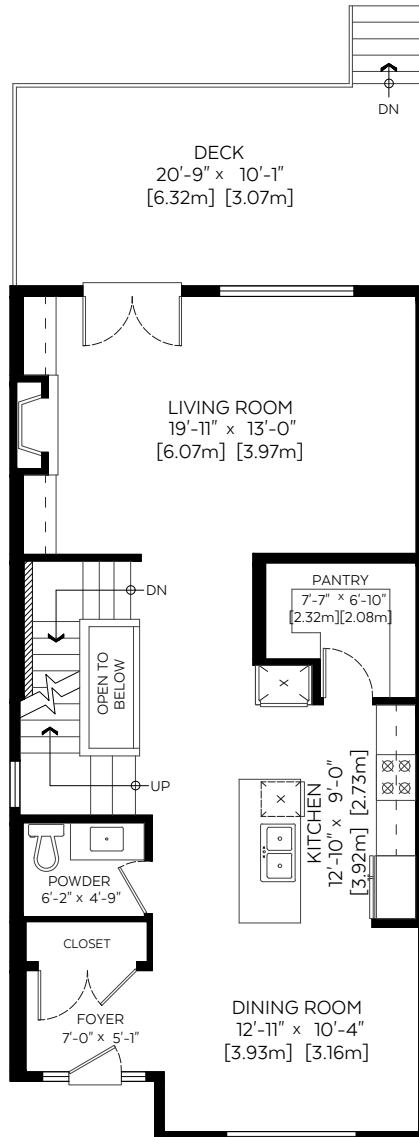
Auxiliary Area

Garage: 403 sq.ft. 37.44 sq.m.

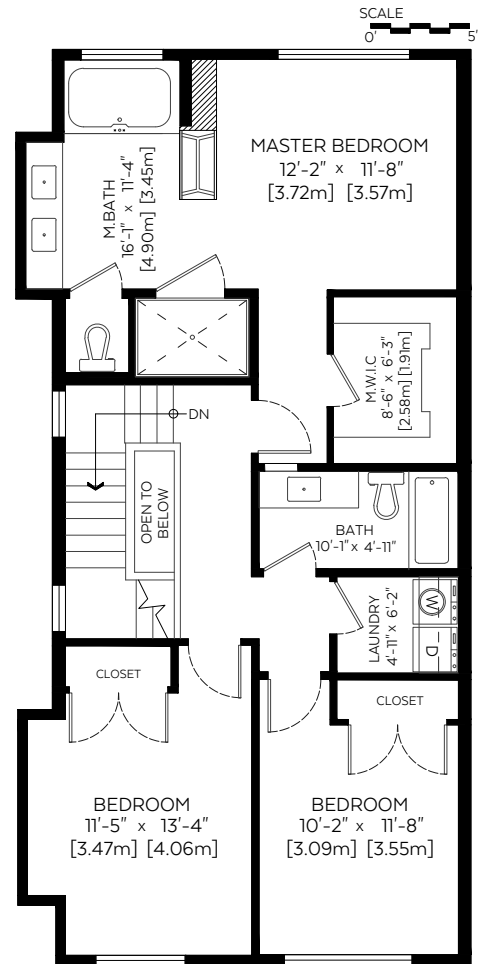
Deck: 210 sq.ft. 19.51 sq.m.



Lower Floor Plan(Below Grd.)  
Floor Area: 792 sq.ft./73.58 sq.m.  
Ceiling Height: 9'



Main Floor Plan(Above Grd.)  
Floor Area: 825 sq.ft./76.64 sq.m.  
Ceiling Height: 10'



Upper Floor Plan(Above Grd.)  
Floor Area: 935 sq.ft./86.86 sq.m.  
Ceiling Height: 8'



Measured on: April 24, 2018

The floor plan is not suitable for architectural/construction, square footage-method RMS standards used & is covered under E&O. © Excelsior Measuring Inc. 2018. All rights reserved for Excelsior Measuring Inc. Users shall not publish and distribute such material (in whole or in part) and/or incorporate it in other works in any form. \*RMS area calculated using interior perimeter walls (paint to paint) in accordance with RMS principle 4.



NORTH