

# 2628 1 Ave NW

Main - 767.27 sq.ft/ 71.28 M2

Upper - 783.26 sq.ft/ 72.76 M2

Basement - 723.30 sq.ft/ 67.19 M2

RMS Area - 1,550.53 sq.ft/ 144.04 M2

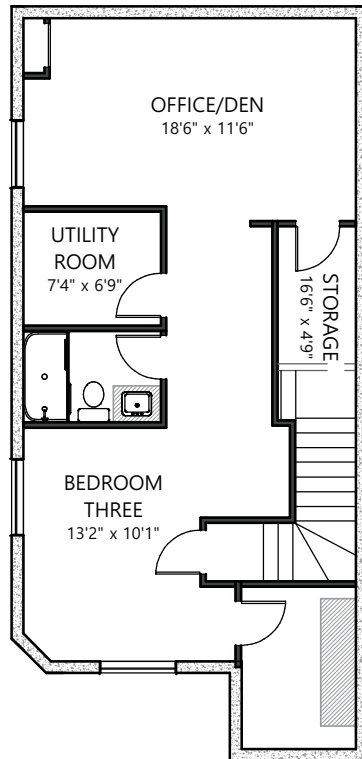
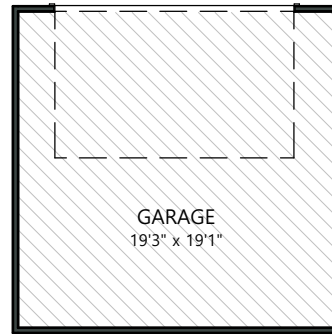
Total With Below Grade - 2,273.83 sq.ft/ 211.23 M2

## Ceiling Heights

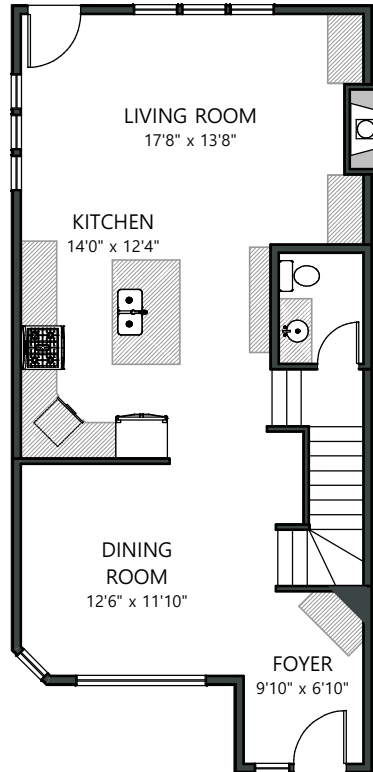
Main - 10ft

Upper - 12ft

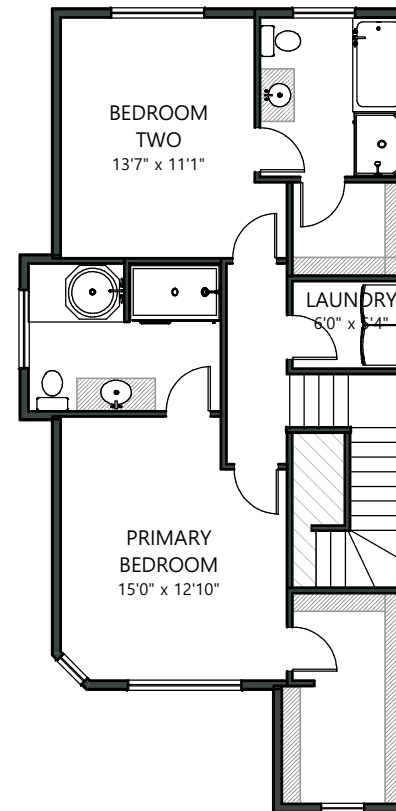
Basement - 9ft



BASEMENT



MAIN



UPPER