

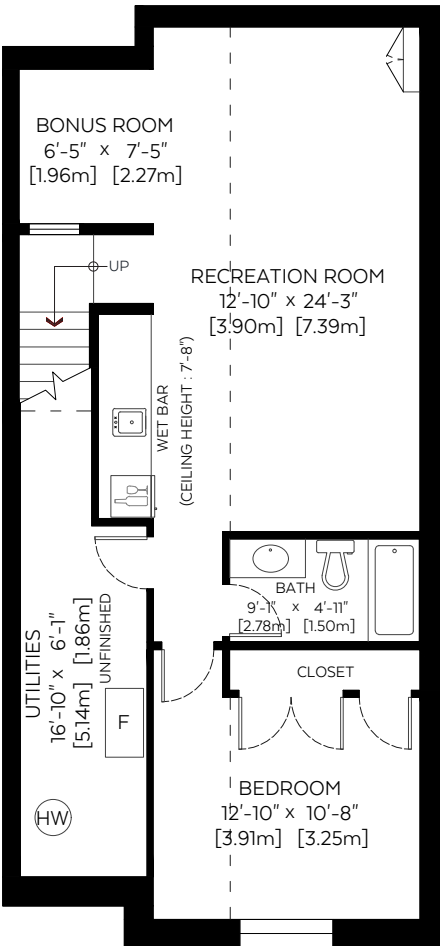
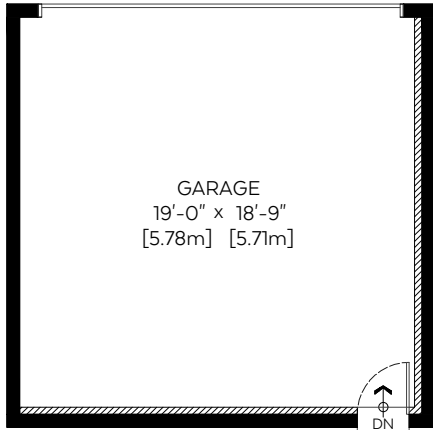
Main Floor: 855 sq.ft. 79.43 sq.m.
 Upper Floor: 933 sq.ft. 86.68 sq.m.

RMS Total (Above Grd.): 1,788 sq.ft. 166.11 sq.m.

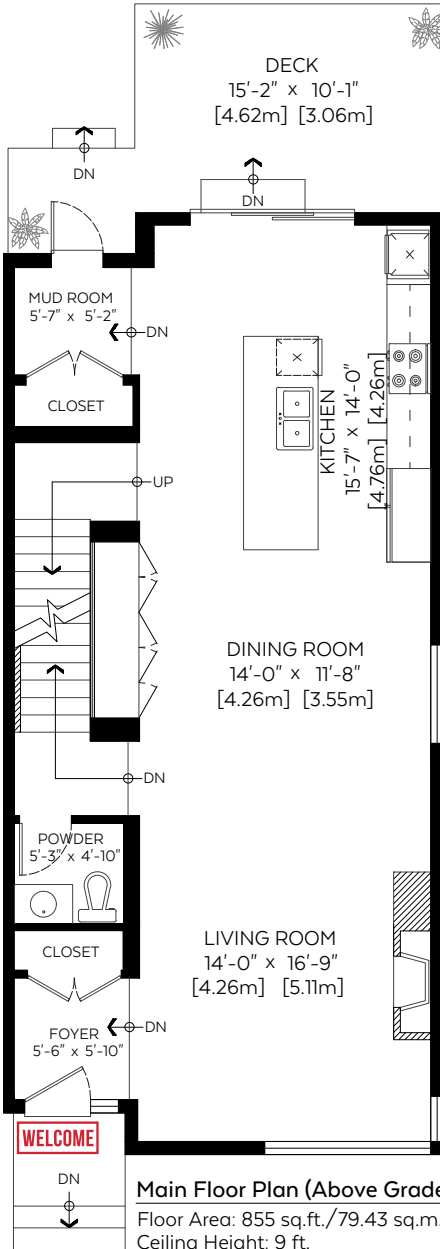
Lower Floor (Below Grd.): 798 sq.ft. 74.14 sq.m.

Auxiliary Area

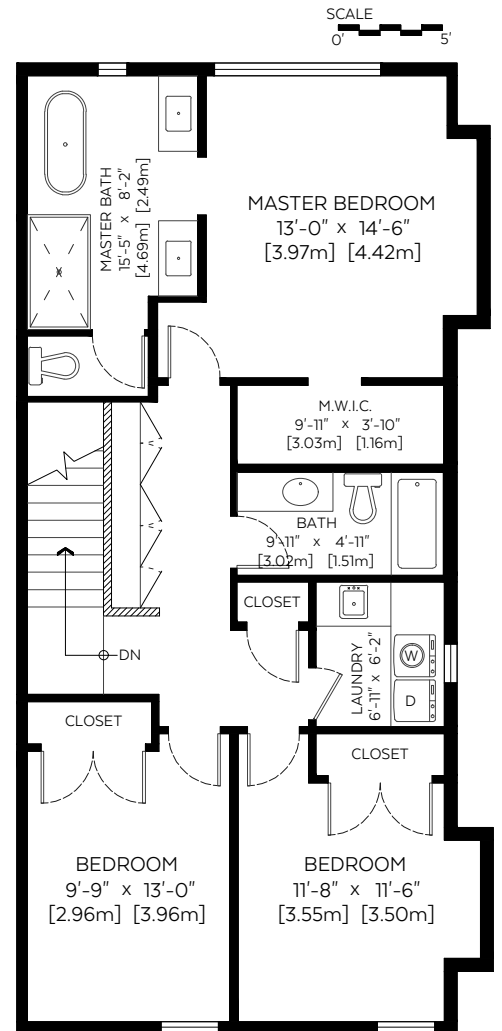
Garage: 355 sq.ft. 32.98 sq.m.
 Deck: 183 sq.ft. 17.00 sq.m.



Lower Floor Plan (Below Grade)
 Floor Area: 798 sq.ft./74.14 sq.m.
 Ceiling Height: 8'-11" unless noted



Main Floor Plan (Above Grade)
 Floor Area: 855 sq.ft./79.43 sq.m.
 Ceiling Height: 9 ft.



Upper Floor Plan (Above Grade)
 Floor Area: 933 sq.ft./86.68 sq.m.
 Ceiling Height: 9 ft.



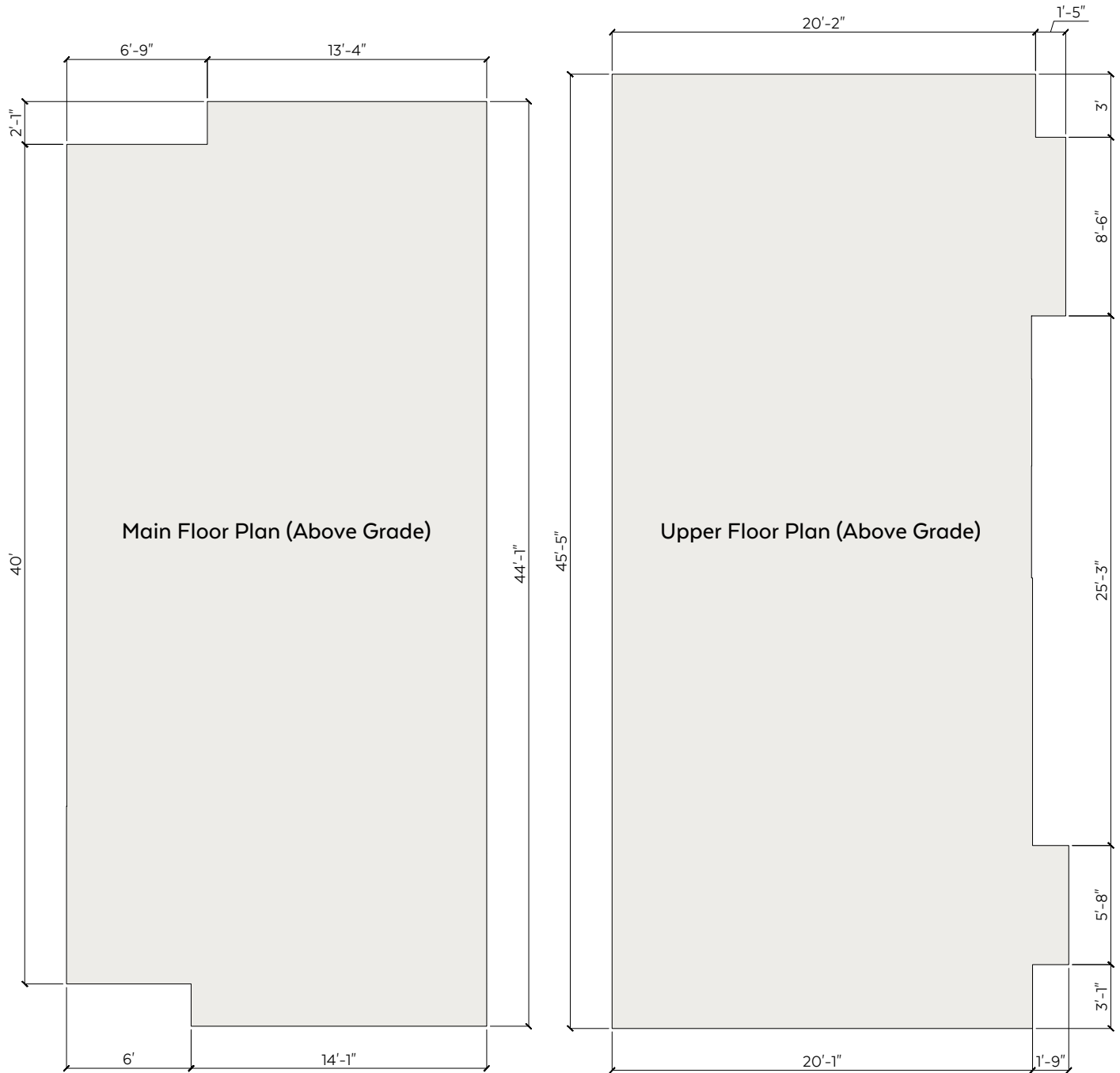
Measured on: Feb. 12, 2019

Measurements and Floorplans are certified, guaranteed and insured.

The floor plan is not suitable for architectural/construction, square footage-method RMS standards used & is covered under E&O. © Excelsior Measuring Inc. 2019. All rights reserved for Excelsior Measuring Inc. Users shall not publish and distribute such material (in whole or in part) and/or incorporate it in other works in any form. *RMS area calculated using interior perimeter walls (paint to paint) in accordance with RMS principle 4.



NORTH



Measurements and Floorplans are certified, guaranteed and insured.

**There will be a small discrepancy in our sqft found in AutoCAD vs sqft found by adding the wall lengths together. This is due to rounding. The wall lengths on Perimeter Outlines are rounded up to the nearest whole number, whereas the sqft found in AutoCAD calculates from a higher decimal.

The floor plan is not suitable for architectural/construction, square footage-method RMS standards used & is covered under E&O. © Excelsior Measuring Inc. 2019. All rights reserved for Excelsior Measuring Inc. Users shall not publish and distribute such material (in whole or in part) and/or incorporate it in other works in any form.

*RMS area calculated using interior perimeter walls (paint to paint) in accordance with RMS principle 4.

