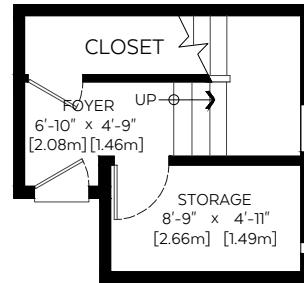


#206 718 5 Street NE Calgary, A.B.

| | | |
|--------------------------------|---------------------|---------------------|
| Entry Floor: | 133 sq.ft. | 12.36 sq.m. |
| Main Floor: | 710 sq.ft. | 65.96 sq.m. |
| Upper Floor: | 609 sq.ft. | 56.58 sq.m. |
| RMS Total (Above Grd.): | 1,452 sq.ft. | 134.89 sq.m. |
| Open to Below: | 109 sq.ft. | 10.13 sq.m. |

Entry Floor Plan (Above Grade)

Floor Area: 133 sq.ft./12.36 sq.m.
Ceiling Height: 0 ft.



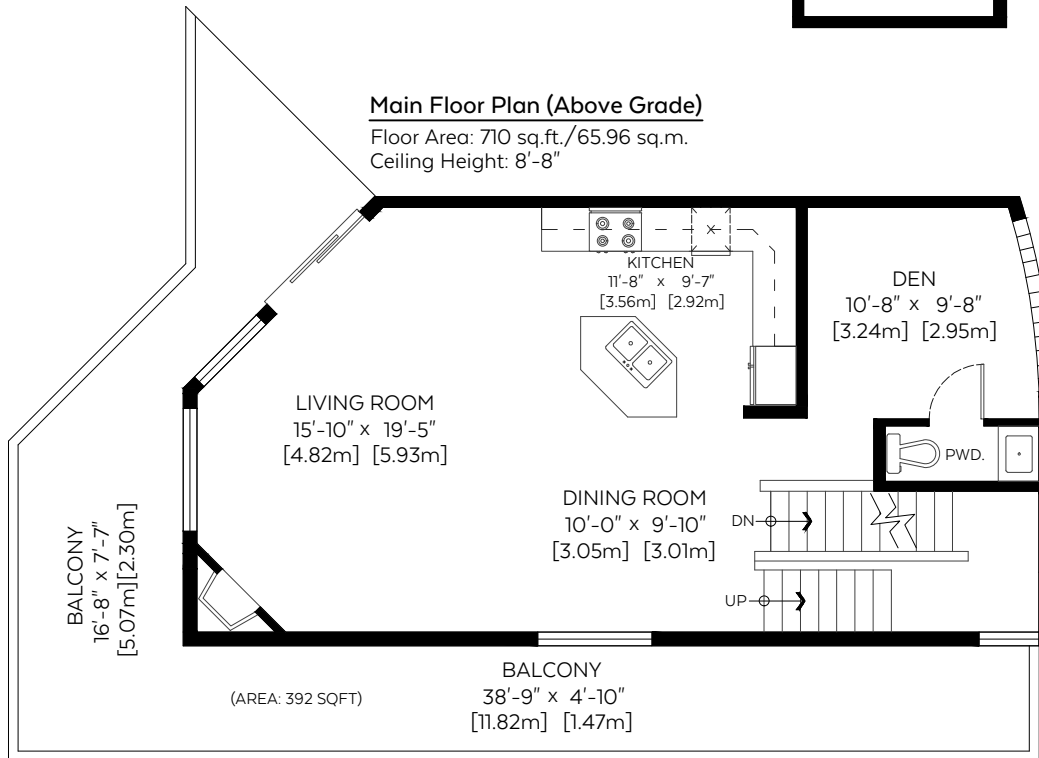
Auxiliary Area

Balconies: 409 sq.ft. 38.00 sq.m.

Measured on: December 21, 2018

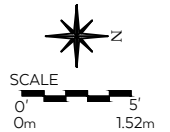
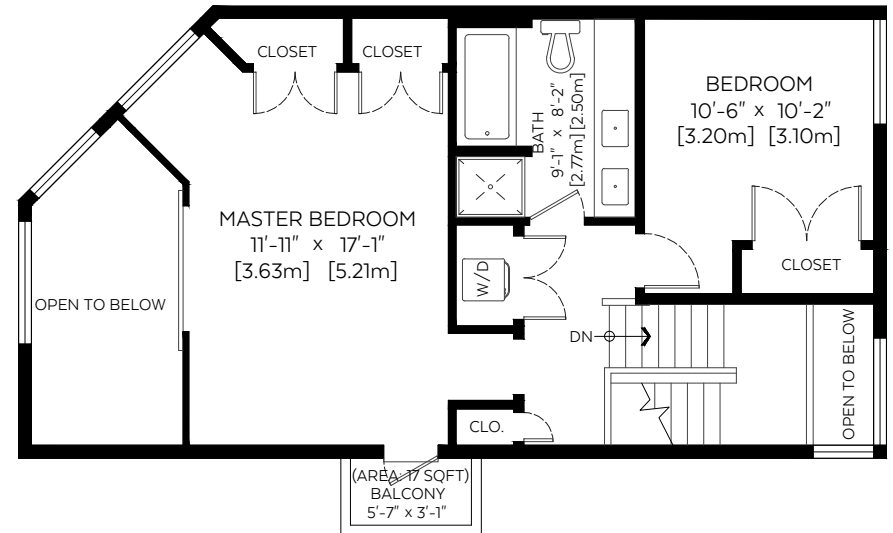
Main Floor Plan (Above Grade)

Floor Area: 710 sq.ft./65.96 sq.m.
Ceiling Height: 8'-8"



Upper Floor Plan (Above Grade)

Floor Area: 609 sq.ft./56.58 sq.m.
Ceiling Height: 8 ft.



Measurements and Floorplans are certified, guaranteed and insured.

**There will be a small discrepancy in our sq.ft. found in AutoCAD V.S. sq.ft. found by adding the wall lengths together. This is due to rounding. The wall lengths on Perimeter Outlines are rounded up to the nearest whole number, whereas the sq.ft. found in AutoCAD calculates from a higher decimal. The floor plan is not suitable for architectural/construction, square footage-method RMS standards used & is covered under E&O. © Excelsior Measuring Inc. 2018. All rights reserved for Excelsior Measuring Inc. Users shall not publish and distribute such material (in whole or in part) and/or incorporate it in other works in any form.

*RMS area calculated using interior perimeter walls(point to point) in accordance with RMS principle 4.